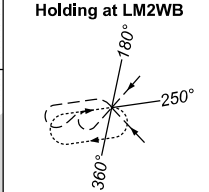
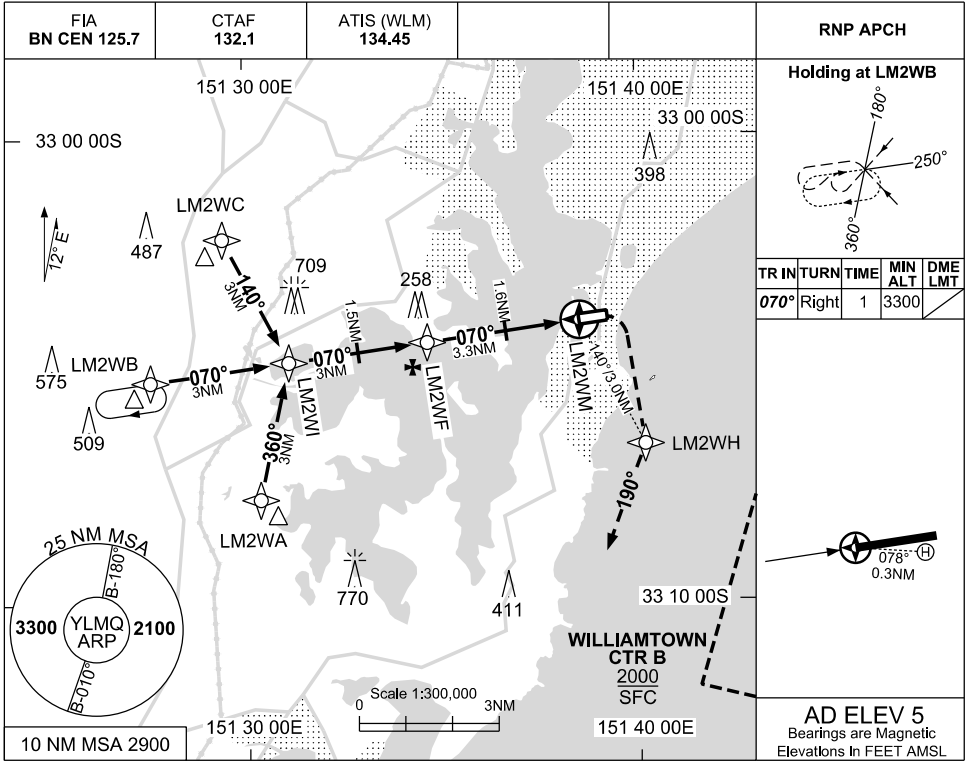


FOR CASA APPROVED OPERATORS ONLY

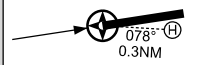
USE QNH  
LAKE MACQUARIE AIRPORT, NSW (YLMQ)

RNP 070

30 NOV 2023

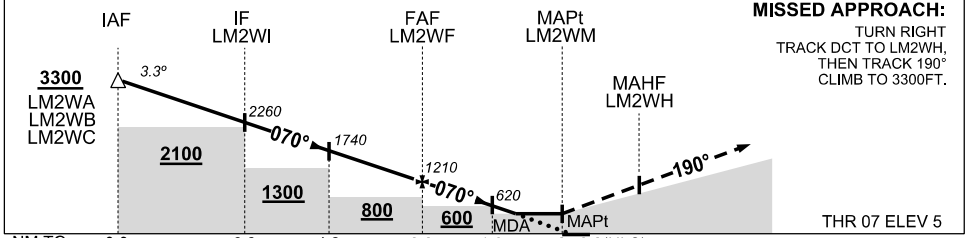


| TR IN | TURN  | TIME | MIN ALT | DME LMT |
|-------|-------|------|---------|---------|
| 070°  | Right | 1    | 3300    |         |



**AD ELEV 5**  
Bearings are Magnetic  
Elevations In FEET AMSL

| NM TO NEXT WPT       | IAF  | 2    | 1    | LM2WI | 2    | 1    | LM2WF | 2   | 1.4 | LM2WM |
|----------------------|------|------|------|-------|------|------|-------|-----|-----|-------|
| ALT (3.3° APCH PATH) | 3300 | 2960 | 2610 | 2260  | 1910 | 1560 | 1210  | 760 | 540 |       |



**MISSED APPROACH:**  
TURN RIGHT  
TRACK DCT TO LM2WH,  
THEN TRACK 190°  
CLIMB TO 3300FT.

THR 07 ELEV 5

**NOTES**

- HLS ELEV 4FT
- CIRCLING AREA PROVIDED WITHIN 2.66NM OF RWY 07/25 THR. MAX IAS: 135KT

| CATEGORY                 | H             |
|--------------------------|---------------|
| LNAV (VAA) USING WLM QNH | 540 (535-3.0) |
| LNAV (VAA)               | 570 (565-3.2) |
| CIRCLING*                | 810 (805-2.4) |
| ALTERNATE                | (1305-4.4)    |

Changes: WPT IDENT, R578B REMOVED, NOTE 2 REMOVED, EDITORIAL.

LMQGN01-177