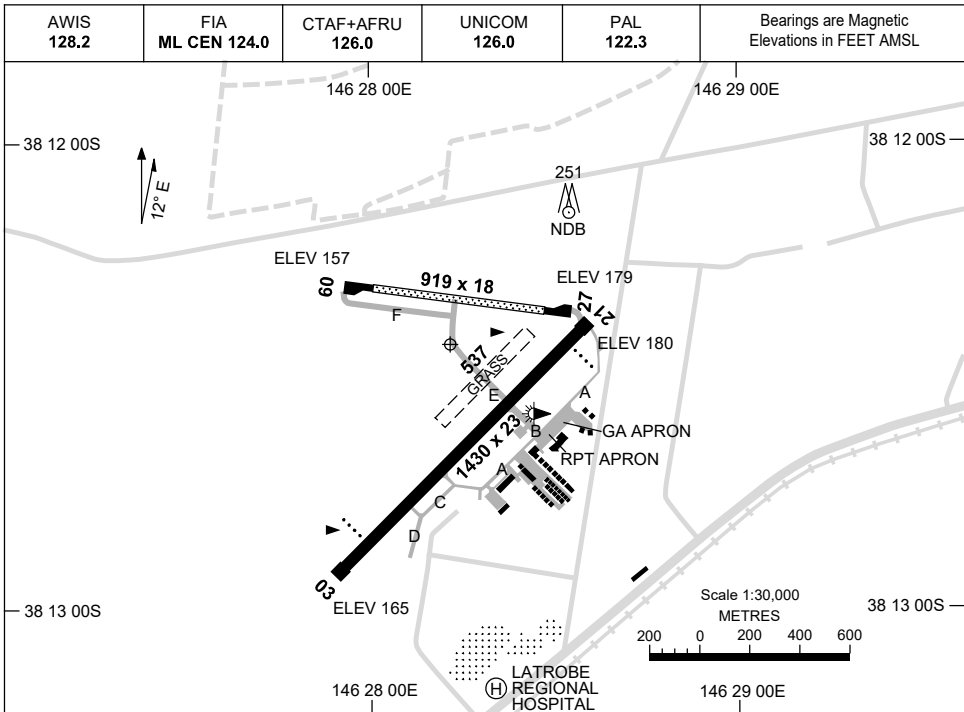


23 MAR 2023

AD ELEV 180
38 12 26S 146 28 13E

AERODROME CHART
LATROBE VALLEY, VIC (YLTV)



RWY		AERODROME LIGHTING	
		TAXIWAY : BLUE EDGE (CENTRE TWY ONLY)	
03	⁰³³	PAPI 3.0°	32FT LIRL
21	²¹³	PAPI 3.0°	32FT LIRL
09	⁰⁸⁵	NIL	
27	²⁶⁵	NIL	

NOTES

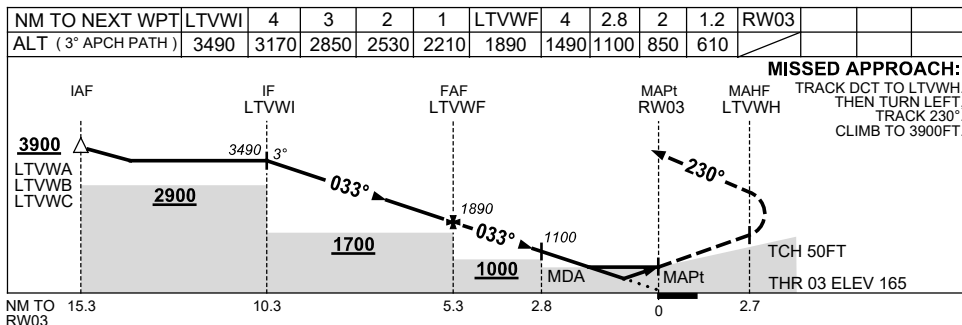
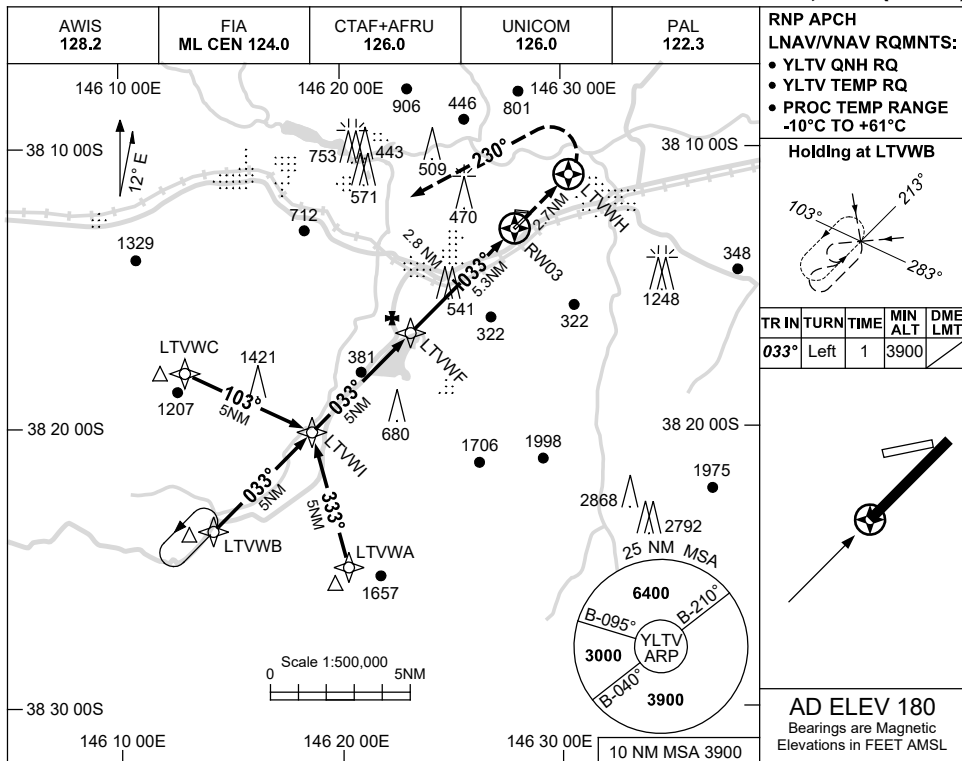
Changes: NOTES, TWY, APN AND BUILDINGS. LTVAD01-174

USE QNH

RNP RWY 03

23 MAR 2023

LATROBE VALLEY, VIC (YLTV)



NOTES

1. MAX IAS:
INITIAL : 210KT.

CATEGORY	A	B	C	D
LNAV/VNAV	610 (445-2.5)			NOT APPLICABLE
LNAV	850 (685-3.9)			
CIRCLING	980 (800-2.4)	1470 (1290-4.0)		
ALTERNATE	(1300-4.4)		(1790-6.0)	

Changes: CHART TITLE, PBN SPECIFICATION BOX.

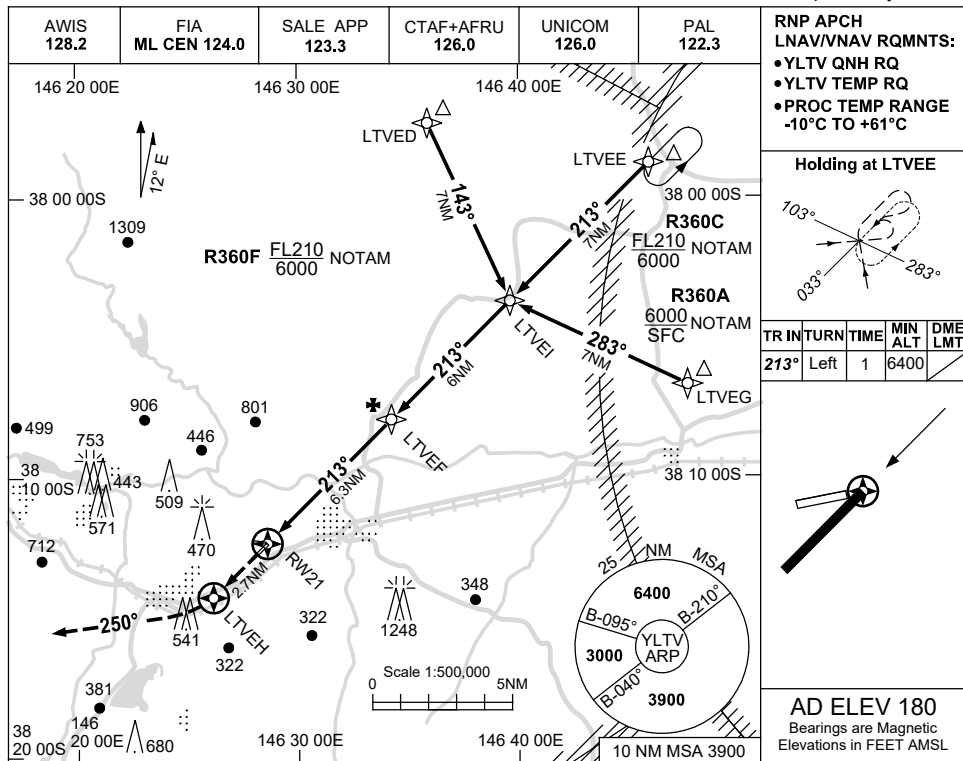
LTVG01-174

USE QNH

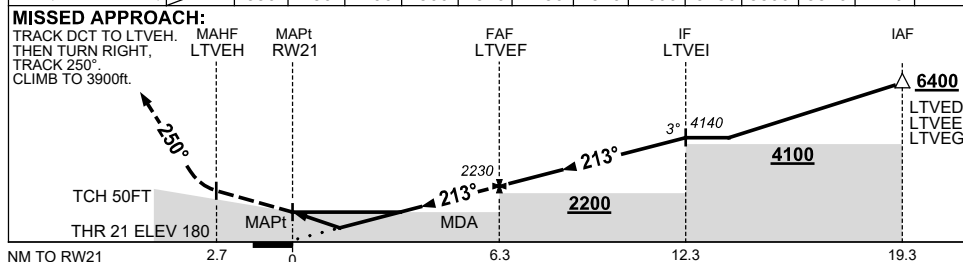
RNP RWY 21

30 NOV 2023

LATROBE VALLEY, VIC (YLTV)



NM TO NEXT WPT	RW21	1	1.6	3	4	5	LTVEF	1	2	3	4	5	LTVEI
ALT (3° APCH PATH)		550	750	1190	1500	1820	2230	2540	2860	3180	3500	3820	4140



NOTES

- MAX IAS:
INITIAL : 210KT.
- CAUTION:**
INITIAL & INTERMEDIATE SEGMENT OVERLAP HOLDING & INITIAL SEGMENTS FOR YWSL RNP RWY 09 PROC.
- INITIAL SEGMENTS INFRINGE R360A/C/F; AWY CLR RQ.

CATEGORY	A	B	C	D
LNAV/VNAV	550 (370-2.1)			NOT APPLICABLE
LNAV	750 (570-3.2)			
CIRCLING	980 (800-2.4)		1470 (1290-4.0)	
ALTERNATE	(1300-4.4)		(1790-6.0)	

Changes: R359A-G DELETED, R360A-F ADDED, NOTE 3, Editorial.

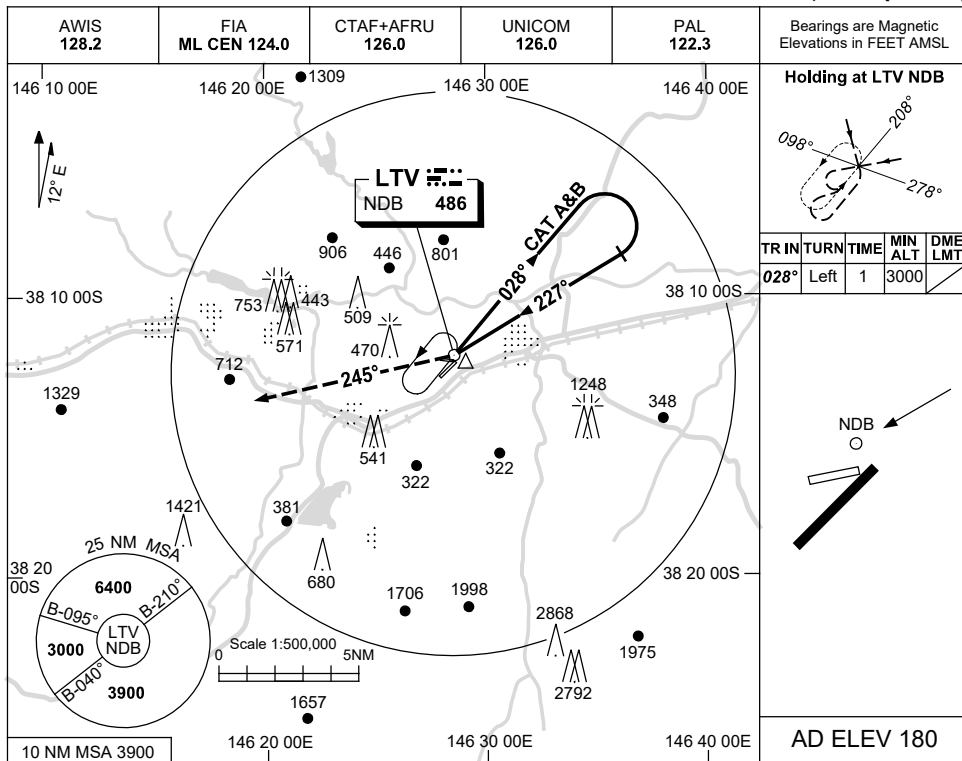
LTVGN02-177

USE QNH

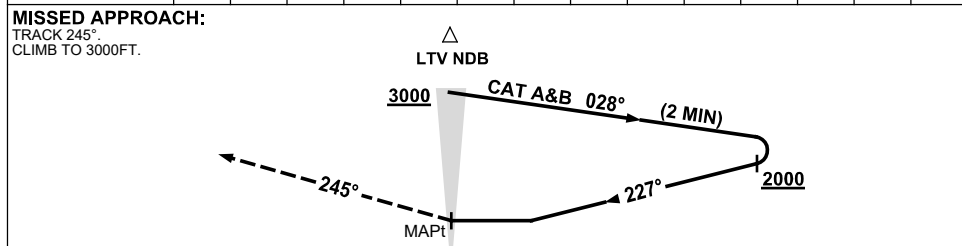
NDB-A

2 DEC 2021

LATROBE VALLEY, VIC (YLTV)



DME DIST	NOT APPLICABLE									
ALT										



NOTES

CATEGORY	A	B	C	D
CIRCLING	980 (800-2.4)		NOT APPLICABLE	
ALTERNATE	(1300-4.4)			

1. MAX IAS:
INITIAL :
CAT A&B 140KT.

Changes: FROM SUP H83/21.

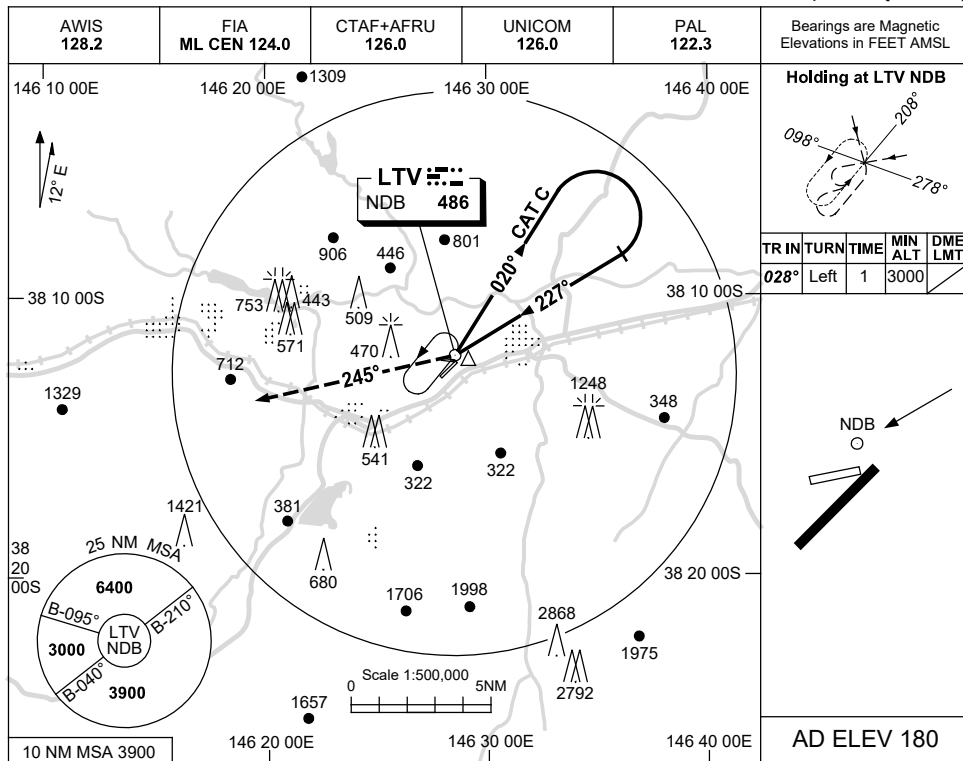
LTVNB01-169

USE QNH

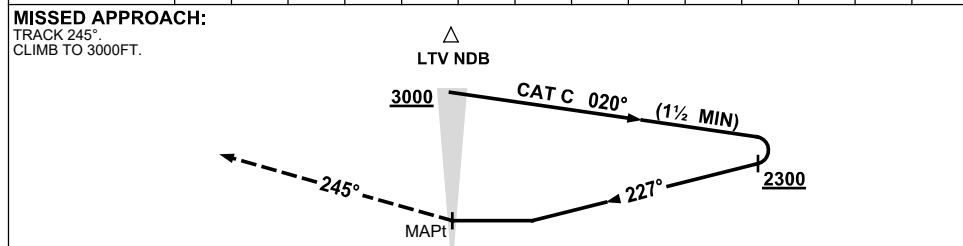
NDB-B

2 DEC 2021

LATROBE VALLEY, VIC (YLTV)



DME DIST	NOT APPLICABLE									
ALT										



NOTES

CATEGORY	A	B	C	D
	NOT APPLICABLE			NOT APPLICABLE
CIRCLING			1470 (1290-4.0)	
ALTERNATE			(1790-6.0)	

1. MAX IAS:
INITIAL : 180KT.
HOLDING: 180KT.

Changes: FROM SUP H83/21.

LTVNB02-169