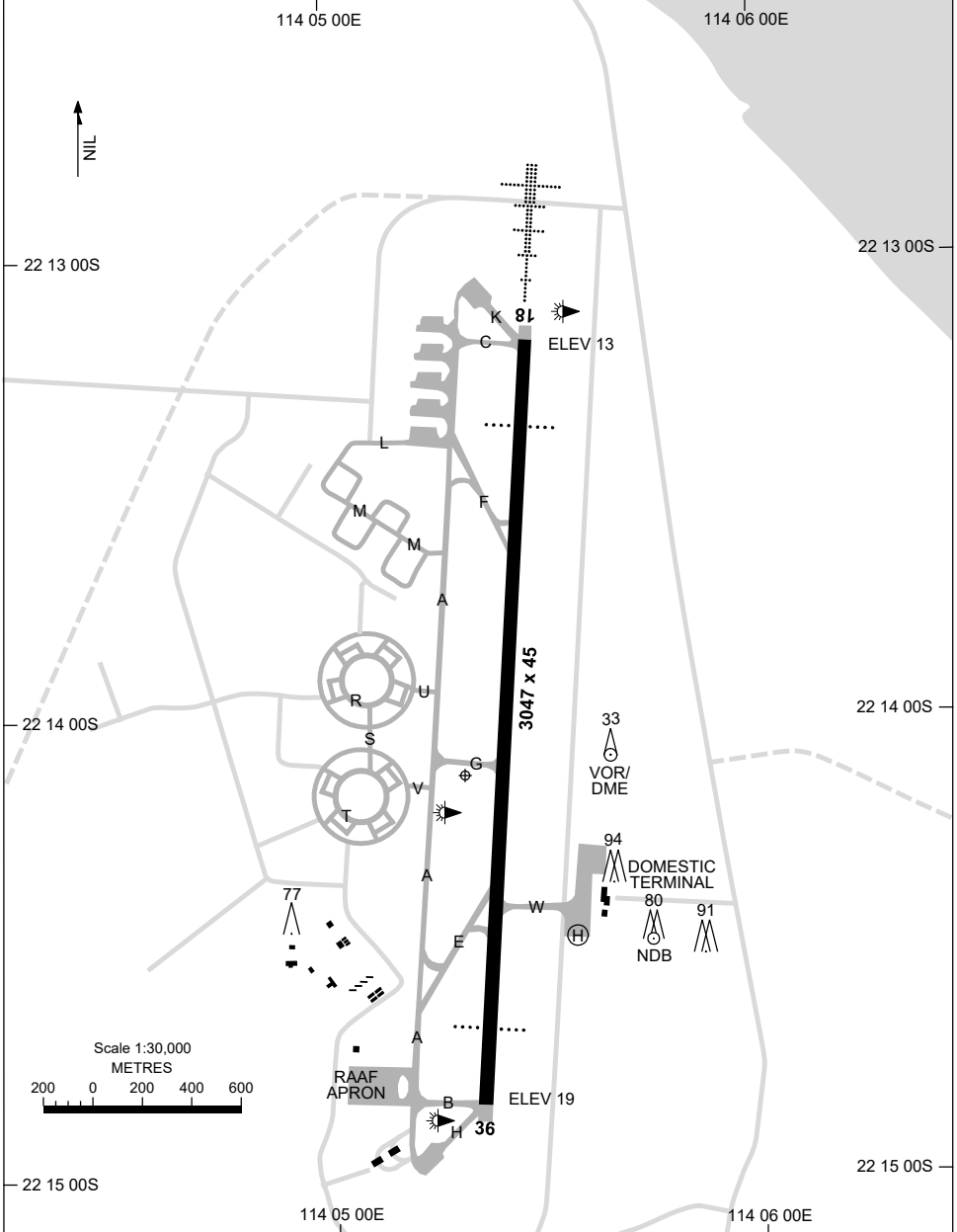


24 MAR 2022

AD ELEV 19
22 14 08S 114 05 19E

AERODROME CHART - Page 1
LEARMONTH, WA (YPLM)

FIA ML CEN 125.9	APP 120.5 261.4	TWR 118.3 257.8	SMC 259.3	CTAF+AFRU 118.3	AFRU+PAL 118.3	Bearings are Magnetic Elevations in FEET AMSL
---------------------	--------------------	--------------------	--------------	--------------------	-------------------	--



Changes: TWY LABELS.

PLMAD01-170

15 JUN 2023

AD ELEV 19
22 14 08S 114 05 19E

AERODROME CHART - Page 2
LEARMONTH, WA (YPLM)

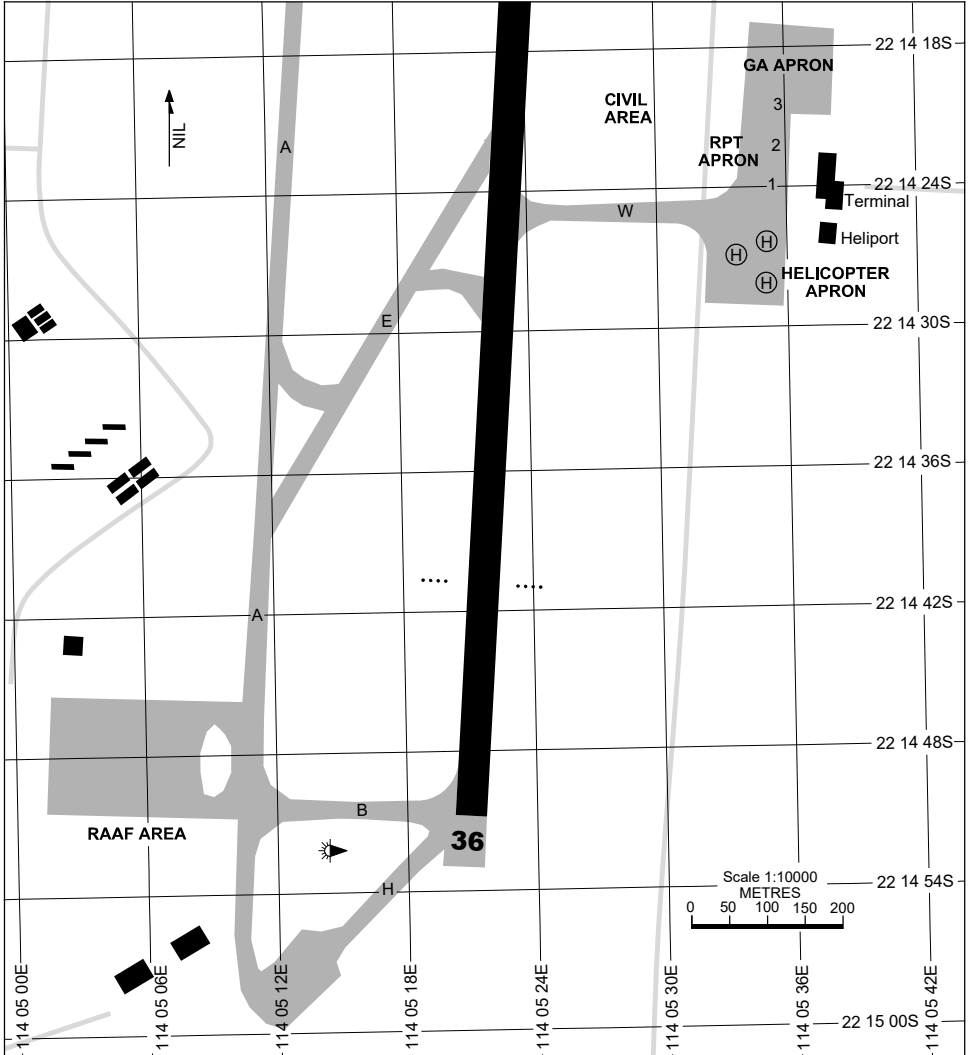
FIA ML CEN 125.9	APP 120.5 261.4	TWR 118.3 257.8	SMC 259.3	CTAF+AFRU 118.3	AFRU+PAL 118.3*	Bearings are Magnetic Elevations in FEET AMSL
RWY	AERODROME LIGHTING					
	TAXIWAY : GREEN CENTRELINE RL : AFRU+PAL 118.3*, SDBY (ARO : 08 9949 1326 , AH 0407 494 419)					
18 <small>184</small> <small>004</small> 36	PAPI 3.0° 50FT HIRL HIAL - CAT I PAPI 3.0° 50FT HIRL					
NOTES						
<ul style="list-style-type: none"> * 1. LIGHTING CIVIL OPS RQ 60 MIN PN WITH REPORTING AGENT. 2. AWIS (PHONE) 08 6216 2623 						

Changes: NOTES.

PLMAD02-175

30 NOV 2023

APRON CHART
LEARMONTH, WA (YPLM)



PARKING POSITION INFORMATION

STAND	CO-ORDINATES	ELEV (ft)	CAPACITY	HYDRANT FUEL
1	22 14 23.88S 114 05 36.17E	15	A320	JET A1
2	22 14 22.14S 114 05 36.49E	15	B712	JET A1
3	22 14 20.03S 114 05 36.64E	15	A320	JET A1

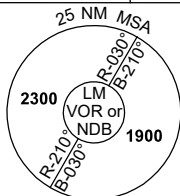
Changes: HELIPAD AND APN, Editorial.

PLMAP01-177

DME or GNSS ARRIVAL PROCEDURES LEARMONTH, WA (YPLM)

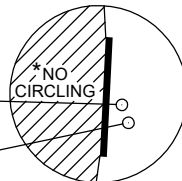
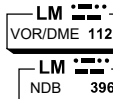
5 SEP 2024

FIA	APP	TWR	SMC	CTAF+AFRU	AFRU+PAL	Bearings are Magnetic Elevations in FEET AMSL
ML CEN 125.9	120.5 261.4	118.3 257.8	259.3	118.3	118.3	



DME USING LM DME REFERENCE WAYPOINT LM VOR

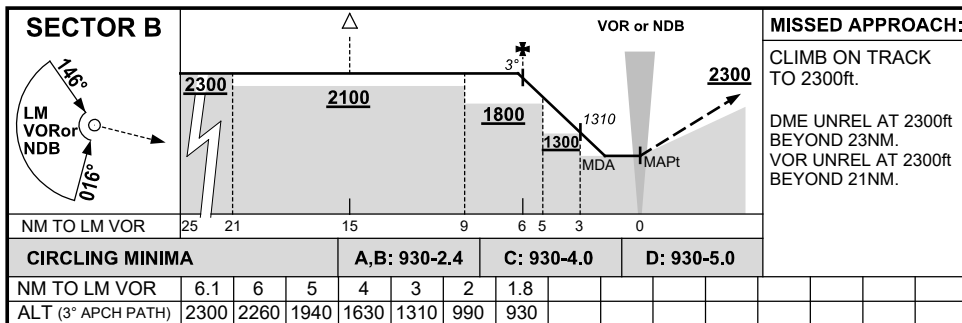
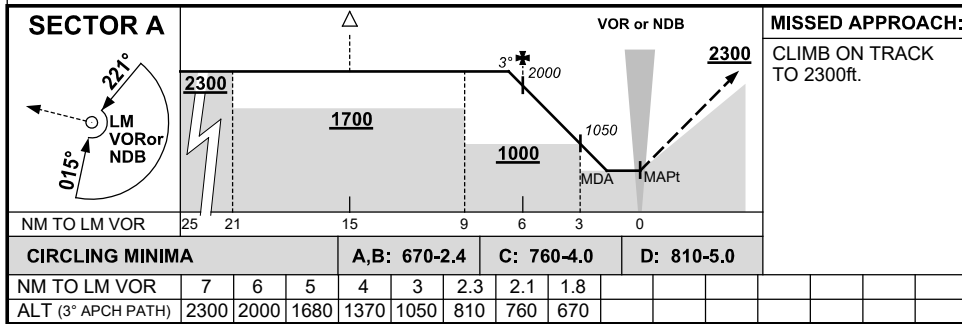
AWIS (PHONE) 08 6216 2623



* NO CIRCLING WEST OF RWY 18/36.

AD ELEV 19

10 NM MSA 2300

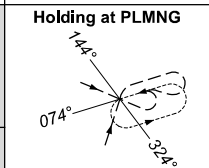
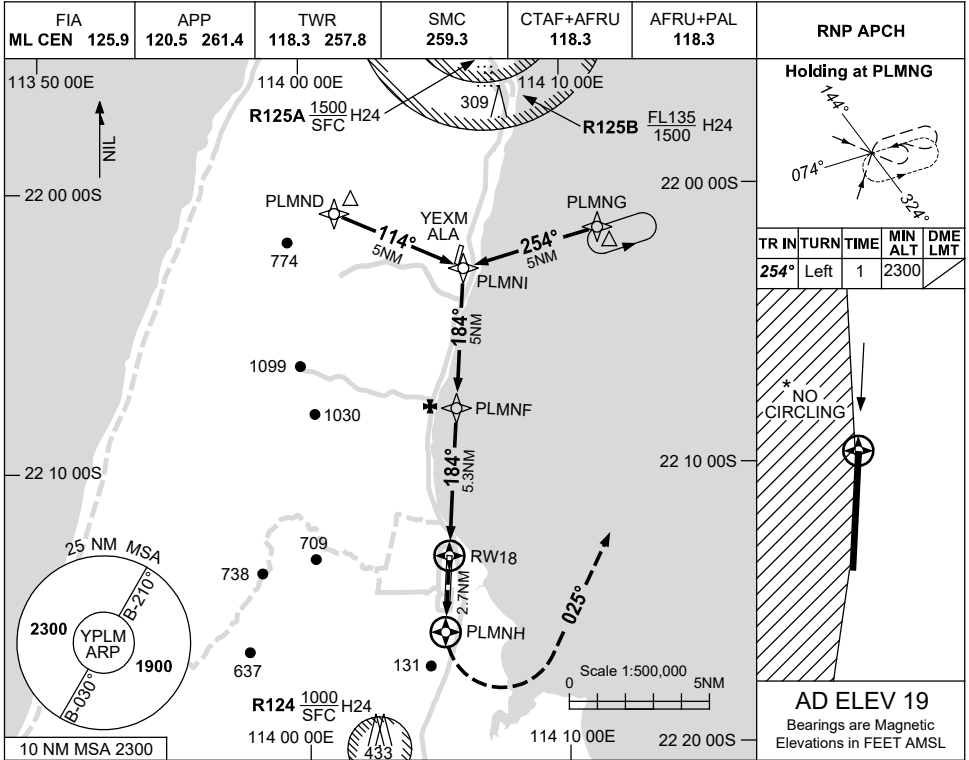


Changes: FROM SUP H62/24.

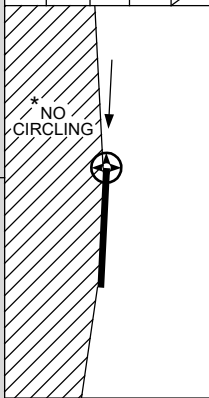
USE QNH

RNP RWY 18
LEARMONTH, WA (YPLM)

5 SEP 2024

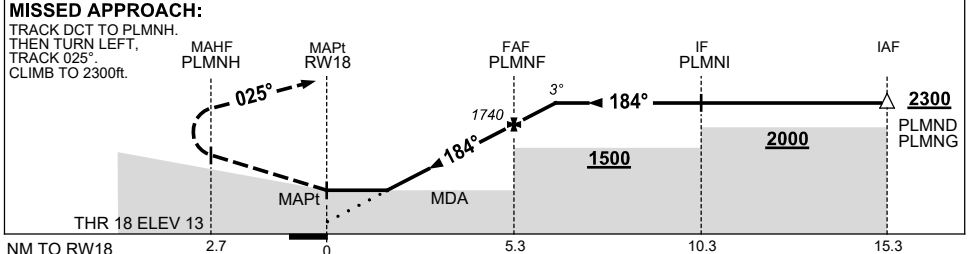


TR	IN	TURN	TIME	MIN ALT	DME LMT
254°	Left	1	2300		



AD ELEV 19
Bearings are Magnetic
Elevations in FEET AMSL

NM TO NEXT WPT	RW18	1.5	2	3	4	PLMNF	1	1.8				
ALT (3° APCH PATH)		550	700	1020	1340	1740	2060	2300				



- NOTES**
- MAX IAS:
INITIAL : 210KT.
HOLDING : 200KT.
 - NO CIRCLING WEST OF RWY 18/36.
 - AWIS (PHONE)
08 6216 2623
 - R125 A/B LOCATED 005°MAG/20.7NM REF YPLM ARP

CATEGORY	A	B	C	D
LNAV	550 (531-2.1)			
CIRCLING*	660 (641-2.4)	760 (741-4.0)	810 (791-5.0)	
ALTERNATE	(1141-4.4)	(1241-6.0)	(1291-7.0)	

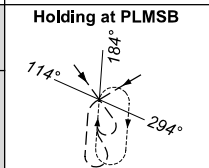
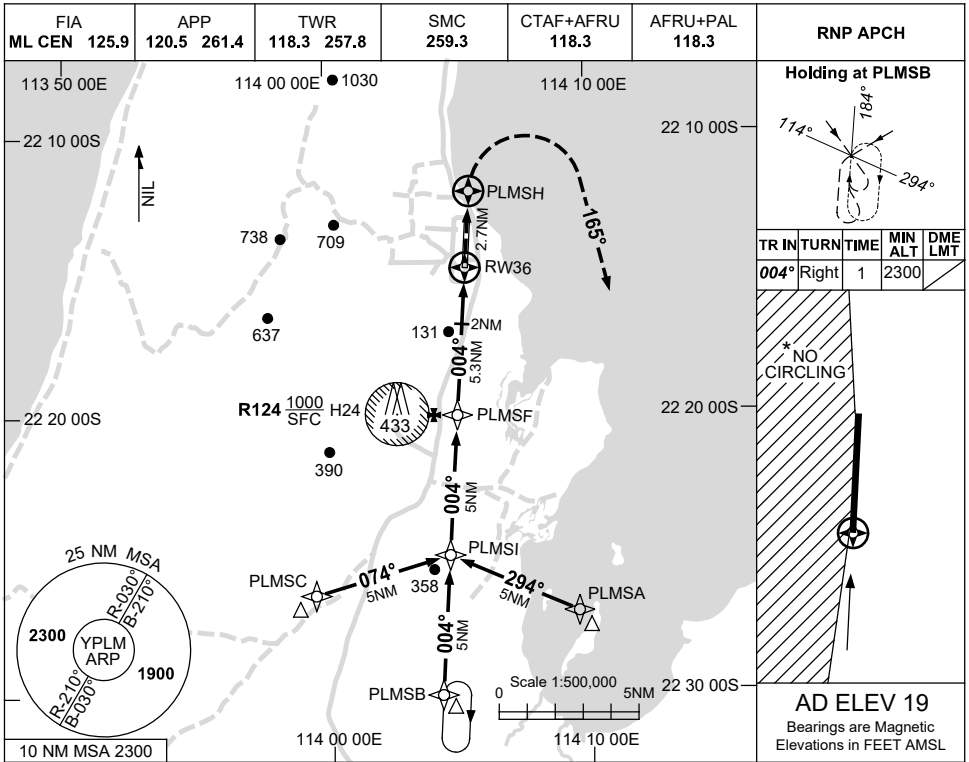
Changes: FROM SUP H62/24.

PLMGN01-180

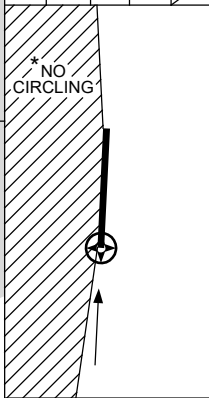
USE QNH

RNP RWY 36
LEARMONTH, WA (YPLM)

30 NOV 2023

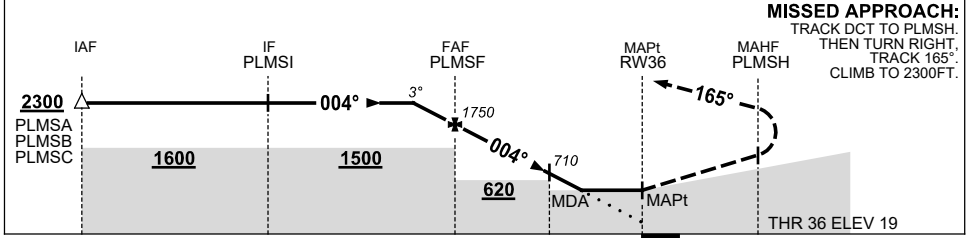


TR IN	TURN	TIME	MIN ALT	DME LMT
004°	Right	1	2300	



AD ELEV 19
Bearings are Magnetic
Elevations in FEET AMSL

NM TO NEXT WPT	1.7	1	PLMSF	4	3	2	1.5	RW36				
ALT (3° APCH PATH)	2300	2070	1750	1340	1020	710	550					



MISSED APPROACH:
TRACK DCT TO PLMSH.
THEN TURN RIGHT,
TRACK 165°.
CLIMB TO 2300FT.

NM TO RW36: 15.3, 10.3, 5.3, 2, 0, 2.7
THR 36 ELEV 19

NOTES

CATEGORY	A	B	C	D
LNAV	550 (531-3.0)			
CIRCLING*	660 (641-2.4)	760 (741-4.0)	810 (791-5.0)	
ALTERNATE	(1141-4.4)		(1291-7.0)	

- MAX IAS:
INITIAL : 210KT.
- NO CIRCLING WEST OF RWY 18/36.
- AWIS (PHONE)
08 6216 2623

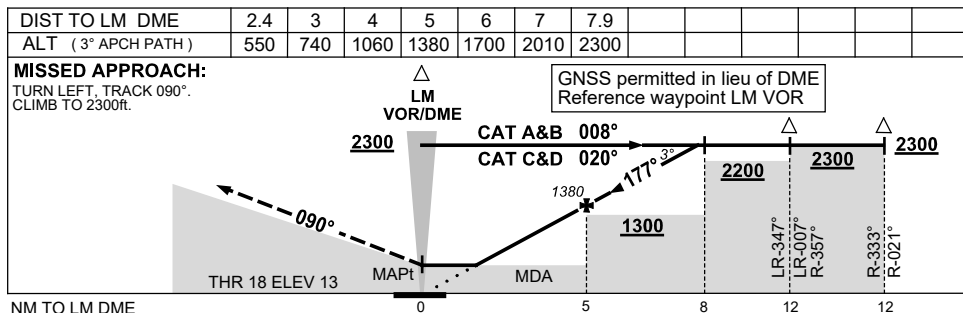
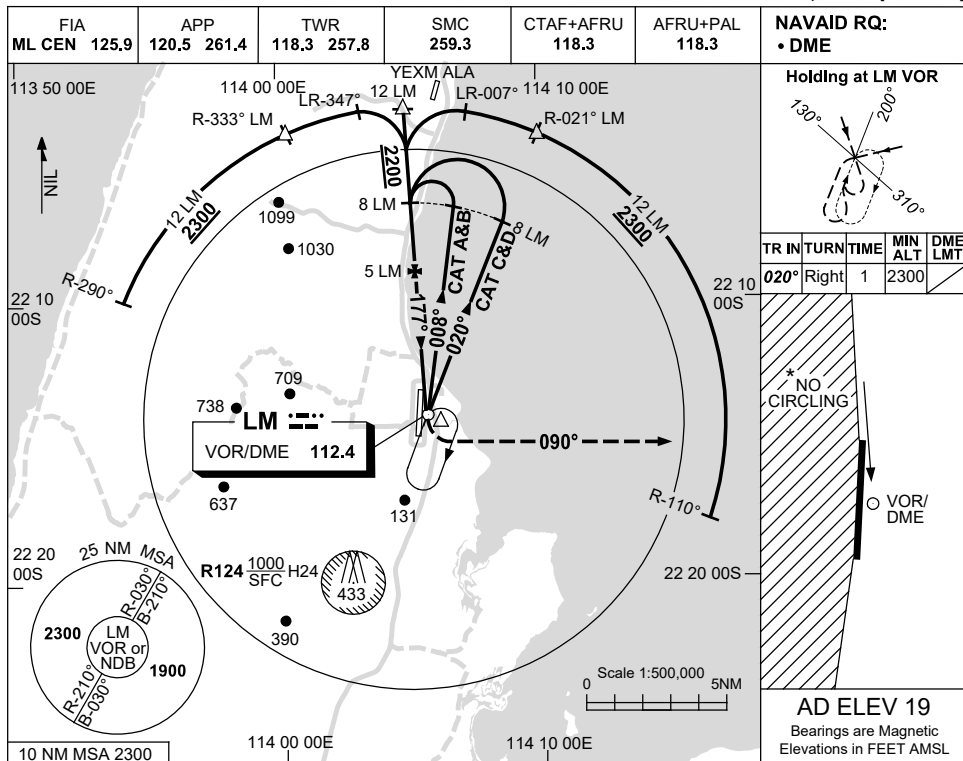
Changes: CHART TITLE, PBN SPECIFICATION BOX, Editorial.

PLMGN02-177

USE QNH

VOR RWY 18
LEARMONTH, WA (YPLM)

21 MAR 2024



NOTES

CATEGORY	A	B	C	D
S-I VOR/DME	550 (531-3.0)			
CIRCLING *	660 (641-2.4)	760 (741-4.0)	810 (791-5.0)	
ALTERNATE	(1141-4.4)	(1241-6.0)	(1291-7.0)	

- MAX IAS:
INITIAL : 210KT.
HOLDING : 210KT.
- NO CIRCLING WEST OF RWY 18/36.
- AWIS (PHONE)
08 6216 2623

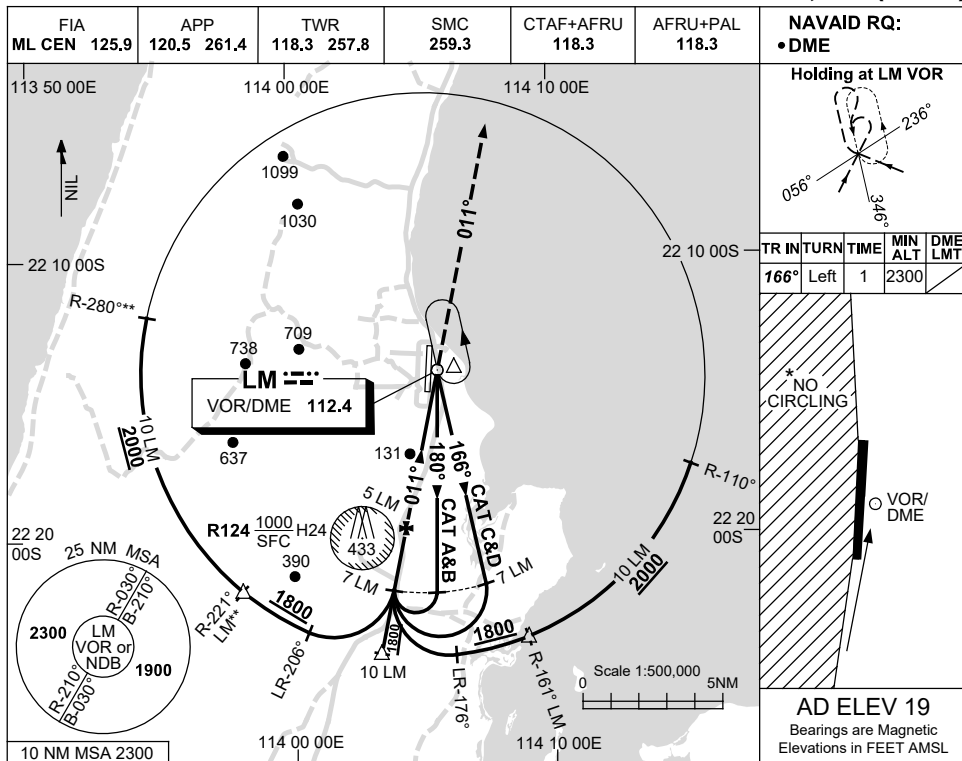
Changes: YEXM ALA, Editorial.

PLMVO01-178

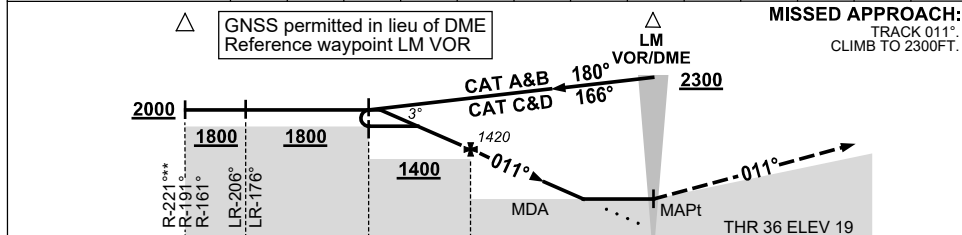
USE QNH

VOR RWY 36
LEARMONTH, WA (YPLM)

15 AUG 2019



DIST TO LM DME	6.8	6	5	4	3	2.5						
ALT (3° APCH PATH)	2000	1730	1420	1100	780	620						



NOTES

1. MAX IAS:
INITIAL : 210KT.
HOLDING: 210KT.
- *2. NO CIRCLING WEST OF RWY 18/36.
- **3. WESTERN ARC AVAILABILITY SUBJECT TO ATC CLEARANCE WHEN LM APP/TWR ACTIVATED.
4. AWIS (PHONE) 08 6216 2623

CATEGORY	A	B	C	D
S-I VOR/DME	610 (591-3.3)			
CIRCLING *	660 (641-2.4)	760 (741-4.0)	810 (791-5.0)	
ALTERNATE	(1141-4.4)	(1241-6.0)	(1291-7.0)	

Changes: COORD FORMAT, NOTE 4, Editorial.

PLMVO02-160