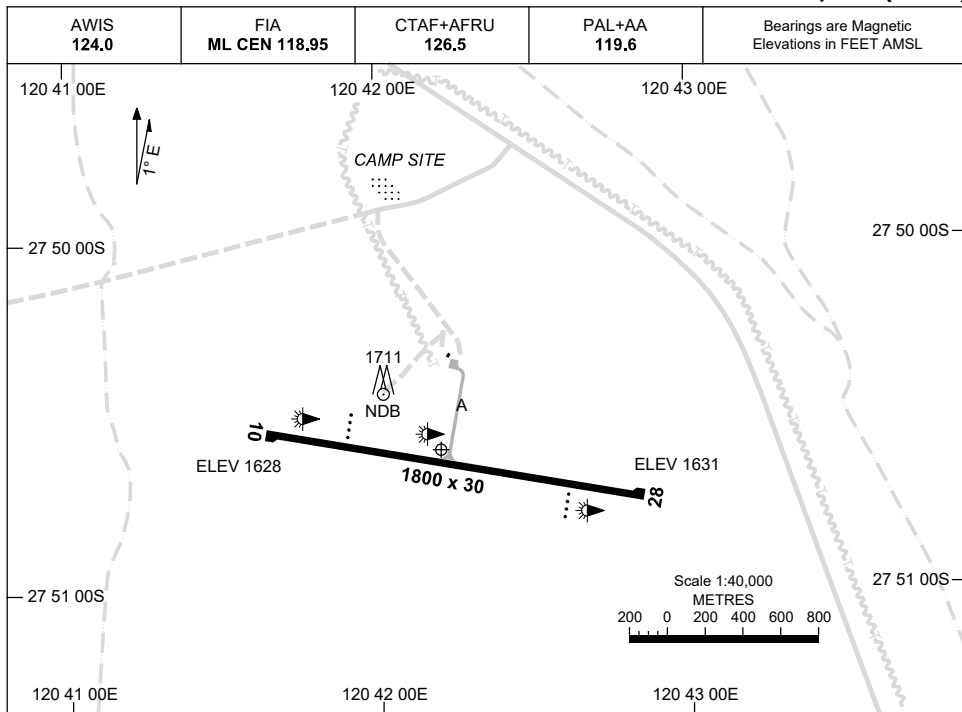


28 NOV 2024

AD ELEV 1631  
27 50 36S 120 42 12E

AERODROME CHART  
**LEINSTER, WA (YLST)**



	<b>AERODROME LIGHTING</b>
<b>RWY</b>	TAXIWAY : BLUE EDGE RL : PAL+AA 119.6, SDBY (8 SEC)
<b>10</b> <sup>099</sup>	PAPI 3.0° 44FT LIRL
279 <b>28</b>	PAPI 3.0° 43FT LIRL

**NOTES**

1. LIRL ACTIVATED HN.
2. FIA FREQ 118.95 AVBL CIRCUIT AREA.

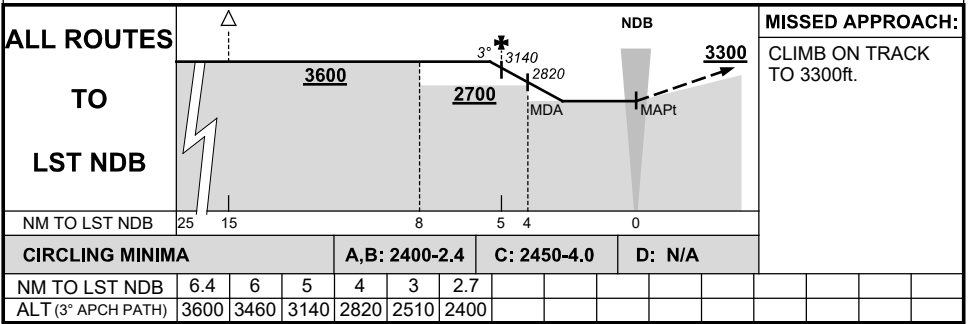
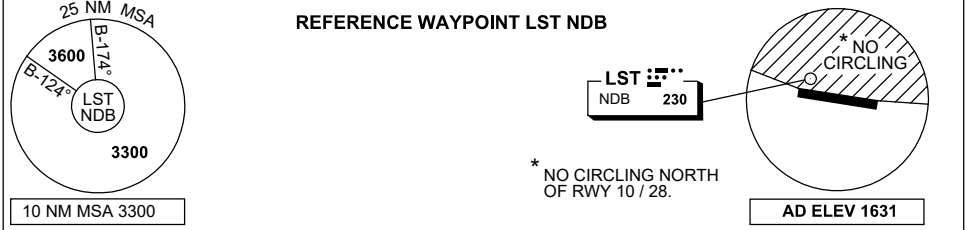
Changes: THR ELEV.

LSTAD01-181

# GNSS ARRIVAL PROCEDURES LEINSTER, WA (YLST)

28 NOV 2024

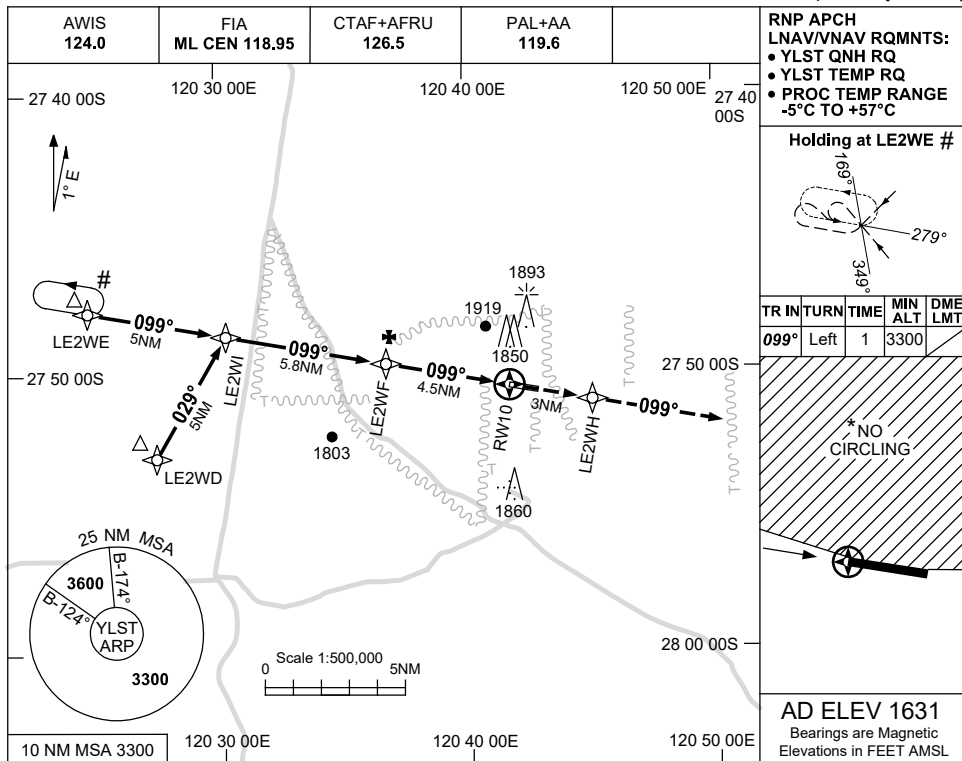
AWIS 124.0	FIA ML CEN 118.95	CTAF+AFRU 126.5	PAL+AA 119.6		Bearings are Magnetic Elevations in FEET AMSL
---------------	----------------------	--------------------	-----------------	--	--



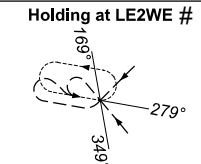
USE QNH

RNP RWY 10  
LEINSTER, WA (YLST)

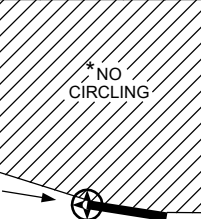
28 NOV 2024



RNP APCH  
LNAV/VNAV RQMNTS:  
• YLST QNH RQ  
• YLST TEMP RQ  
• PROC TEMP RANGE  
-5°C TO +57°C

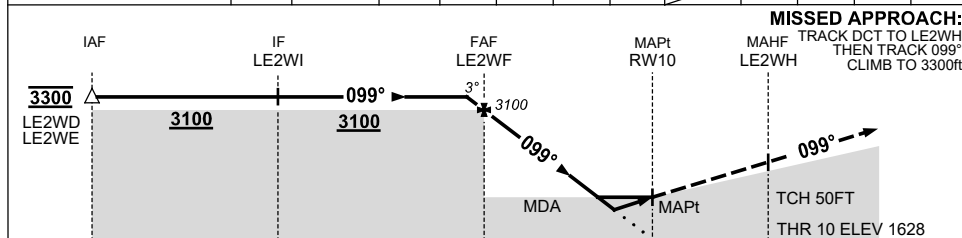


TR IN	TURN	TIME	MIN ALT	DME LMT
099°	Left	1	3300	



AD ELEV 1631  
Bearings are Magnetic  
Elevations in FEET AMSL

NM TO NEXT WPT	0.6	LE2WF	4	3	2	1.6	0.8	RW10
ALT (3° APCH PATH)	3300	3100	2950	2630	2310	2170	1940	



MISSED APPROACH:  
TRACK DCT TO LE2WH,  
THEN TRACK 099°  
CLIMB TO 3300ft.

NM TO RW10: 15.3, 10.3, 4.5, 0, 3

NOTES

- MAX IAS: INITIAL : 230KT.
- NO CIRCLING NORTH OF RWY 10 / 28.
- ACFT MUST CTC YBLU PRIOR TO HOLD ON CTAF.
- CAUTION: PROC IS OVERLAID BY YBLU RNP RWY 01.

CATEGORY	A	B	C	D
LNAV/VNAV		1940 (312-1.7)		NOT APPLICABLE
LNAV		2170 (539-3.1)		
CIRCLING*	2350 (719-2.4)	2450 (819-4.0)		
ALTERNATE	(1219-4.4)	(1319-6.0)		

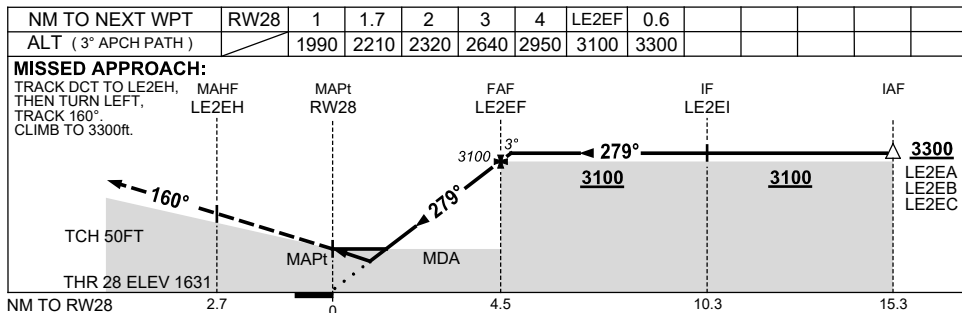
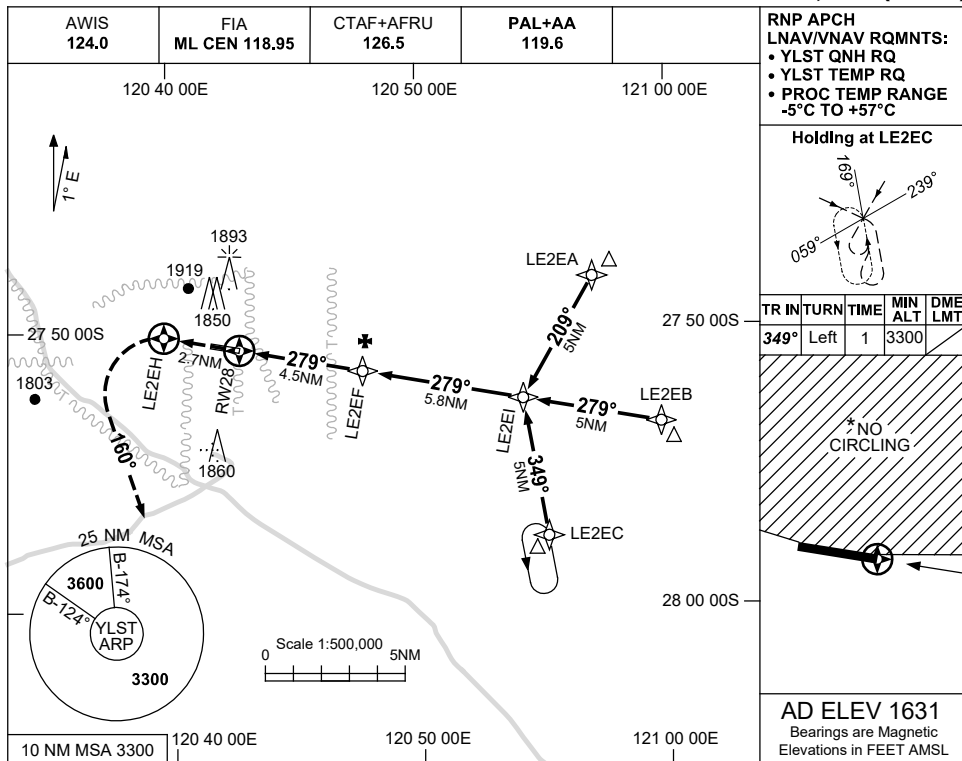
Changes: MSA, WPT NAMING CONVENTION, REMOVED LERWG SEGMENT, THR ELEV, Editorial.

LSTGN01-181

USE QNH

RNP RWY 28  
LEINSTER, WA (YLST)

28 NOV 2024



NOTES

CATEGORY	A	B	C	D
LNAV/VNAV	1990 (359-2.0)			NOT APPLICABLE
LNAV	2210 (579-3.3)			
CIRCLING *	2350 (719-2.4)		2450 (819-4.0)	
ALTERNATE	(1219-4.4)		(1319-6.0)	

- MAX IAS: INITIAL : 230KT.
- NO CIRCLING NORTH OF RWY 10 / 28.
- CAUTION: PROC IS OVERLAID BY YBLU RNP RWY 01.

Changes: MSA, WPT NAMING CONVENTION, THR ELEV, Editorial.

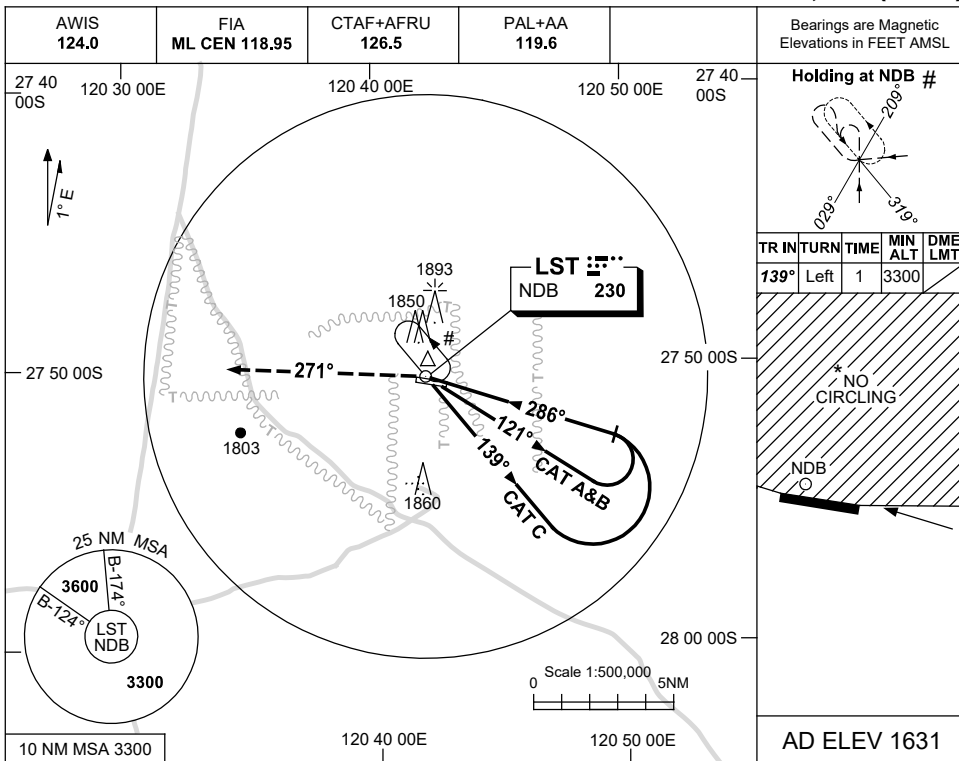
LSTGN02-181



USE QNH

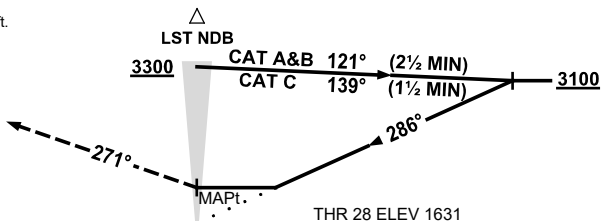
NDB RWY 28  
LEINSTER, WA (YLST)

28 NOV 2024



DME DIST	NOT APPLICABLE									
ALT										

**MISSED APPROACH:**  
TRACK 271°  
CLIMB AND MAINTAIN 3300ft.



**NOTES**

1. MAX IAS:  
INITIAL : 210KT.
- \*2. NO CIRCLING NORTH OF RWY 10 / 28.
- #3. ACFT MUST CTC YBLU PRIOR TO HOLD ON CTAF.
4. **CAUTION:** PROC IS OVERLAI BY YBLU RNP RWY 01.

CATEGORY	A	B	C	D
S-I NDB	<b>2250 (619-3.5)</b>			NOT APPLICABLE
CIRCLING *	<b>2350 (719-2.4)</b>	<b>2450 (819-4.0)</b>		
ALTERNATE	<b>(1219-4.4)</b>		<b>(1319-6.0)</b>	

Changes: MSA, THR ELEV, Editorial.

LSTNB02-181