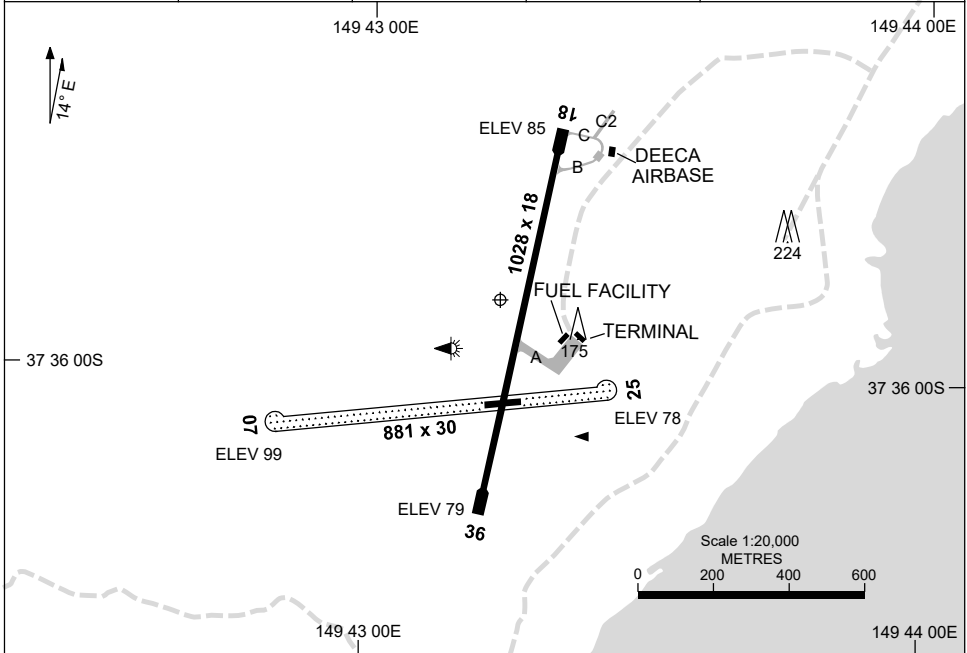


15 JUN 2023

AD ELEV 102  
37 35 56S 149 43 15E

AERODROME CHART  
**MALLACOOTA, VIC (YMCO)**

FIA ML CEN 120.75	CTAF 126.7	PAL 120.6		Bearings are Magnetic Elevations in FEET AMSL
----------------------	---------------	--------------	--	--



RWY	AERODROME LIGHTING	
		TAXIWAY : BLUE EDGE RL : PAL 120.6 , PTBL IN EMERG. PN RQ (ARO : 0419 532 060 or 0408 580 569)
<b>18</b> <sup>177</sup>	LIRL	
<sup>357</sup> <b>36</b>	LIRL	
<b>07</b> <sup>069</sup>	PTBL	
<sup>250</sup> <b>25</b>	PTBL	

**NOTES**

1. AWIS (PHONE) 03 8470 3212
2. FIA 120.75 AVBL 3000FT AND ABV.

Changes: TAXIWAYS, BUILDINGS.

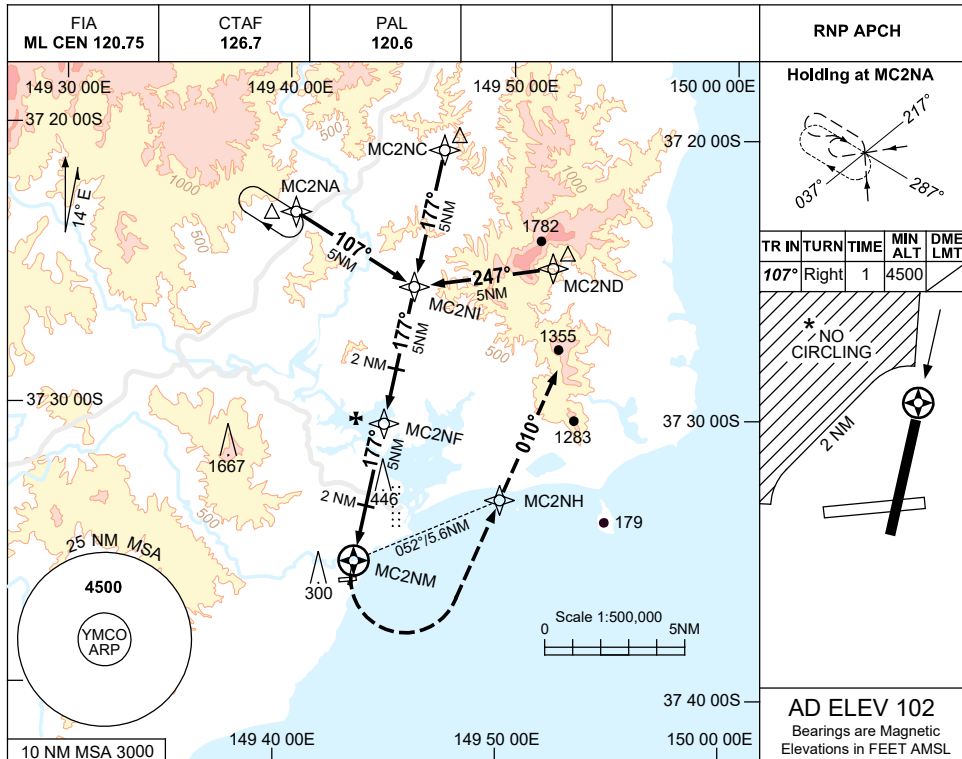
MCOAD01-175

USE QNH

RNP RWY 18

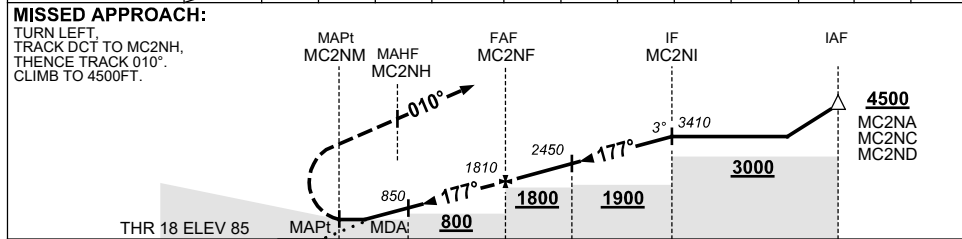
23 MAR 2023

MALLACOOTA, VIC (YMCO)



AD ELEV 102  
Bearings are Magnetic  
Elevations in FEET AMSL

NM TO NEXT WPT	MC2NM	2	3	4	MC2NF	1	2	3	4	MC2NI			
ALT (3° APCH PATH)		850	1180	1490	1810	2130	2450	2770	3090	3410			



**NOTES**

- MAX IAS: INITIAL : 210KT.
- NO CIRCLING IN SECTOR NW OF RWY 07 AND 18, BEYOND 2 NM.
- COLOUR: SEE SPEC NOTICES.
- AWIS (PHONE) 03 8470 3212

CATEGORY	A	B	C	D
LNAV	850 (765-4.4)			NOT APPLICABLE
CIRCLING *	910 (808-2.4)		1270 (1168-4.0)	
ALTERNATE	(1308-4.4)		(1668-6.0)	

Changes: FROM SUP H115/22, CHART TITLE, PBN SPECIFICATION BOX.

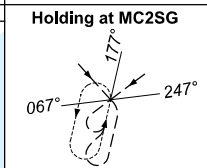
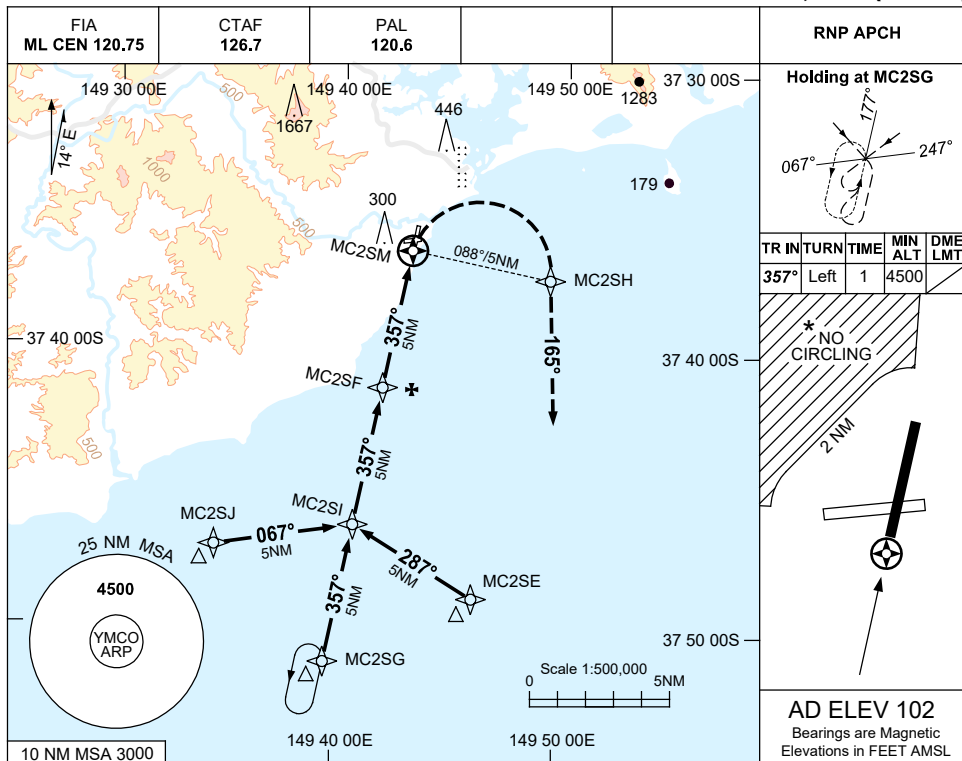
MCOGN01-174

USE QNH

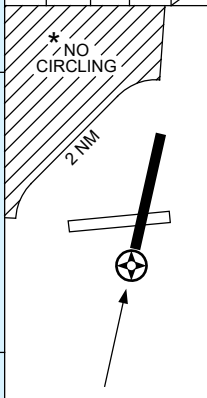
RNP RWY 36

23 MAR 2023

MALLACOOTA, VIC (YMCO)

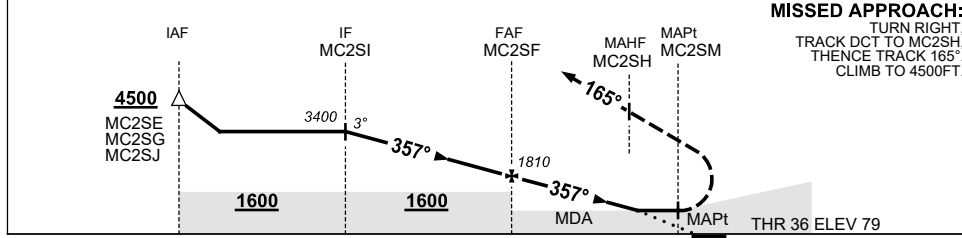


TR	INTURN	TIME	MIN ALT	DME LMT
357°	Left	1	4500	



**AD ELEV 102**  
Bearings are Magnetic  
Elevations in FEET AMSL

NM TO NEXT WPT	MC2SI	4	3	2	1	MC2SF	4	3	2	1.8	MC2SM
ALT (3° APCH PATH)	3400	3080	2760	2450	2130	1810	1490	1170	850	780	



**MISSED APPROACH:**  
TURN RIGHT,  
TRACK DCT TO MC2SH,  
THENCE TRACK 165°.  
CLIMB TO 4500FT.

NM TO MC2SM	15	10	5	0
Altitude	4500	3400	1810	780
MDA		1600	1600	
THR 36 ELEV				79

**NOTES**

CATEGORY	A	B	C	D
LNAV		780 (701-4.0)		NOT APPLICABLE
CIRCLING*	910 (808-2.4)	1270 (1168-4.0)		
ALTERNATE	(1308-4.4)	(1668-6.0)		

1. MAX IAS:  
INITIAL : 210KT.
- \* 2. NO CIRCLING IN SECTOR NW OF RWY 07 AND 18, BEYOND 2 NM.
3. COLOUR: SEE SPEC NOTICES.
4. AWIS (PHONE) 03 8470 3212

Changes: FROM SUP H115/22, CHART TITLE, PBN SPECIFICATION BOX. MCOG02-174