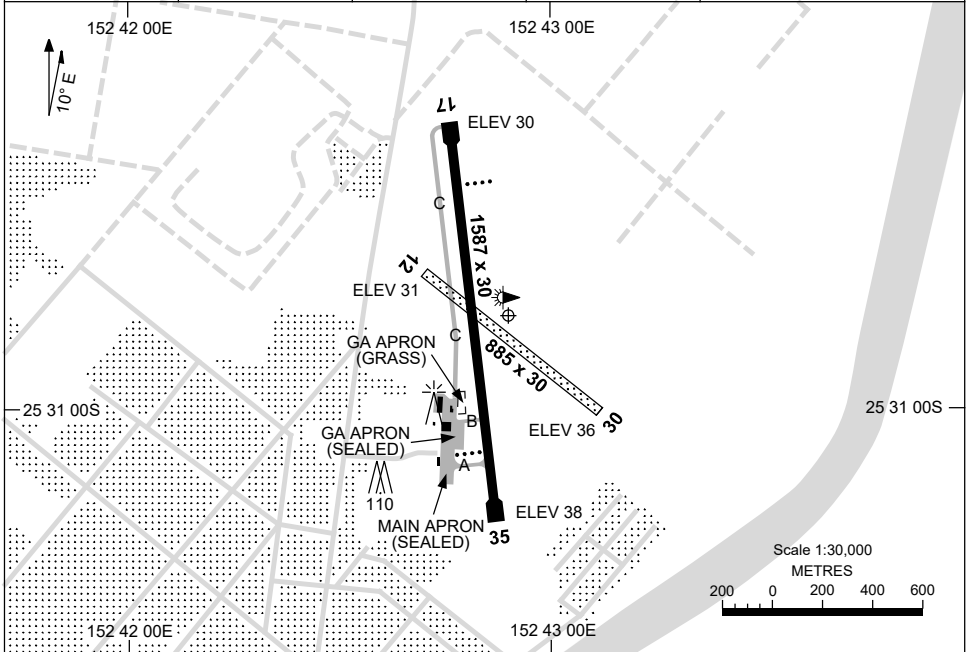


13 JUN 2024

AD ELEV 38
25 30 48S 152 42 54E

AERODROME CHART
MARYBOROUGH, QLD (YMYB)

| | | | | |
|----------------|---------------------|----------------|--------------|--|
| AWIS 133.55 | FIA BN CEN 124.6 | CTAF 126.55 | PAL 120.6 | Bearings are Magnetic Elevations in FEET AMSL |
|----------------|---------------------|----------------|--------------|--|



| RWY | | AERODROME LIGHTING |
|-----------|-----------|---|
| | | TAXIWAY : BLUE EDGE (RPT TWY TO APRON ONLY) RL : PAL 120.6 |
| 17 343 | 163 35 | PAPI 3.0° 42FT LIRL PAPI 3.0° 42FT LIRL |
| 12 298 | 118 30 | NIL NIL |

NOTES

1. AWIS ACTIVATED BY 1 SEC TRANSMISSION

Changes: RENAMED APRON, Editorial.

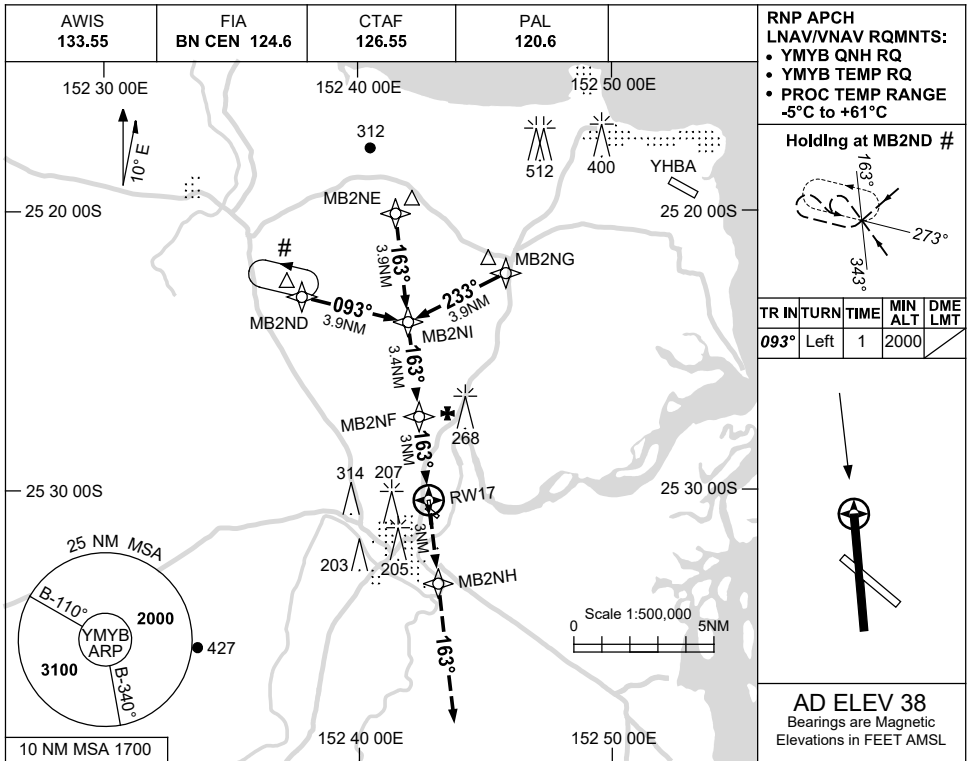
MYBAD01-179

USE QNH

RNP RWY 17

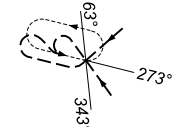
5 SEP 2024

MARYBOROUGH, QLD (YMYB)

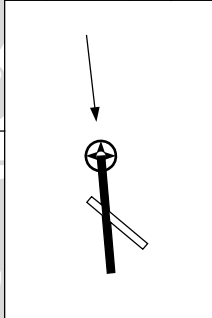


- RNP APCH
LNAV/VNAV RQMNTS:
- YMYB QNH RQ
 - YMYB TEMP RQ
 - PROC TEMP RANGE -5°C to +61°C

Holding at MB2ND #

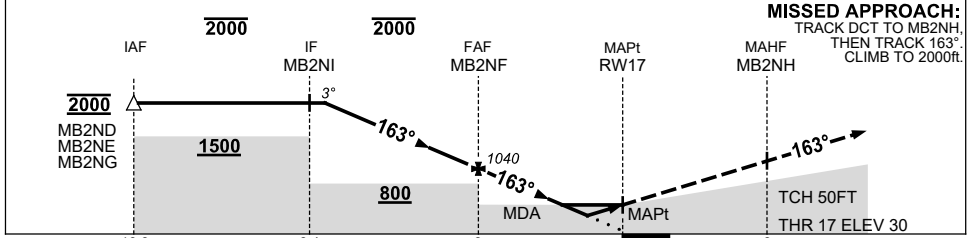


| TR | IN | TURN | TIME | MIN ALT | DME LMT |
|------|------|------|------|---------|---------|
| 093° | Left | 1 | 2000 | | |



AD ELEV 38
Bearings are Magnetic
Elevations in FEET AMSL

| NM TO NEXT WPT | 3.1 | 3 | 2 | 1 | MB2NF | 2 | 1.6 | 0.8 | RWY17 |
|--------------------|------|------|------|------|-------|-----|-----|-----|-------|
| ALT (3° APCH PATH) | 2000 | 1990 | 1670 | 1350 | 1040 | 720 | 600 | 350 | |



MISSED APPROACH:
TRACK DCT TO MB2NH,
THEN TRACK 163°,
CLIMB TO 2000ft.

NOTES

1. MAX IAS:
INITIAL : 210KT.
2. CAUTION: HLDG NOT
ABV 2000FT DUE TO
OVERLYING PROC AT
YHBA.
3. PROC OVERLAID BY
PROC AT YHBA.
PRESCRIBED MAX
ALTITUDES ENSURE
SEPARATION.

| CATEGORY | A | B | C | D |
|-----------|---------------|---------------|---------------|---|
| LNAV/VNAV | | 350 (320-1.8) | | |
| LNAV | | 600 (570-3.2) | | |
| CIRCLING | 710 (672-2.4) | 810 (772-4.0) | 830 (792-5.0) | |
| ALTERNATE | (1172-4.4) | (1272-6.0) | (1292-7.0) | |

Changes: WPT NAMING CONVENTION.

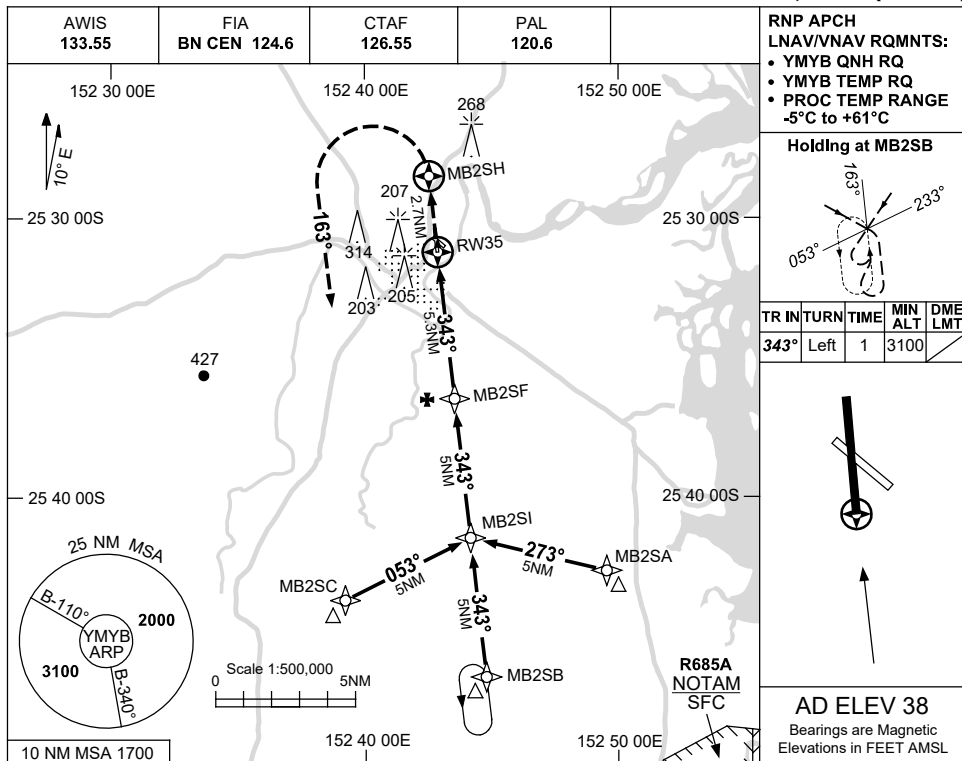
MYBGN01-180

USE QNH

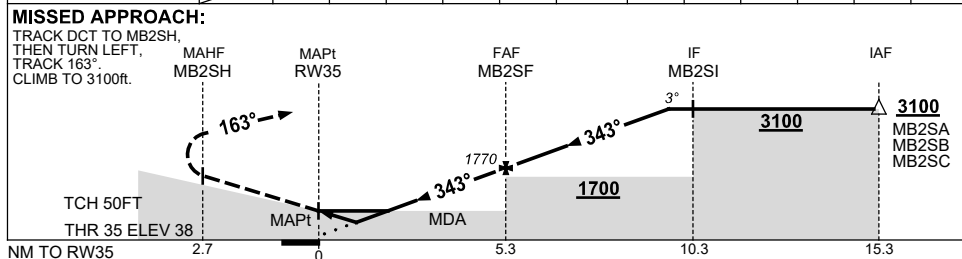
RNP RWY 35

5 SEP 2024

MARYBOROUGH, QLD (YMYB)



| NM TO NEXT WPT | RW35 | 1 | 1.6 | 2 | 3 | 4 | MB2SF | 1 | 2 | 3 | 4 | 4.2 |
|--------------------|------|-----|-----|-----|------|------|-------|------|------|------|------|------|
| ALT (3° APCH PATH) | | 410 | 600 | 720 | 1040 | 1360 | 1770 | 2090 | 2400 | 2720 | 3040 | 3100 |



NOTES

| CATEGORY | A | B | C | D |
|-----------|----------------------|----------------------|----------------------|----------------------|
| LNAV/VNAV | | 410 (372-2.1) | | |
| LNAV | | 600 (562-3.2) | | |
| CIRCLING | 710 (672-2.4) | | 810 (772-4.0) | 830 (792-5.0) |
| ALTERNATE | (1172-4.4) | | (1272-6.0) | (1292-7.0) |

1. MAX IAS:
INITIAL : 210KT.
2. **CAUTION:** HOLDING AT MB2SB. SEPARATION NOT ASSURED FROM R685A.

Changes: NOTE 2, WPT NAMING CONVENTION, R685A ADDED.

MYBGN02-180