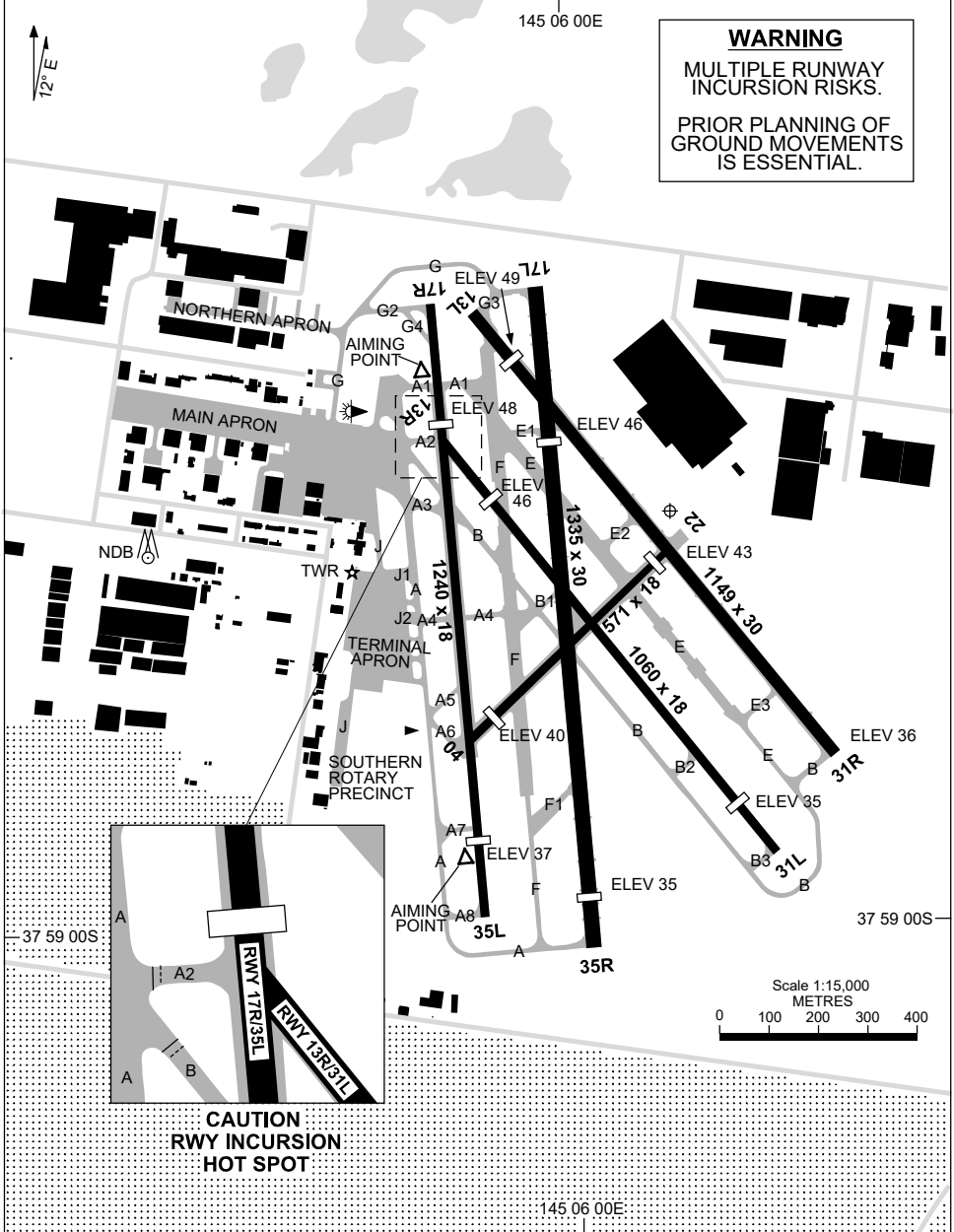


13 JUN 2024

37 58 33S 145 06 08E

MELBOURNE/MOORABBIN, VIC (YMMB)

ATIS 120.9 398	TWR 118.1 123.0	SMC 134.25	FIA (AH) ML CEN 135.7	CTAF (AH) 118.1	AWIS (AH) 120.9	Bearings are Magnetic Elevations in FEET AMSL
-------------------	--------------------	---------------	--------------------------	--------------------	--------------------	--



28 NOV 2024

AD ELEV 55
37 58 33S 145 06 08E

AERODROME CHART - Page 2
MELBOURNE/MOORABBIN, VIC (YMMB)

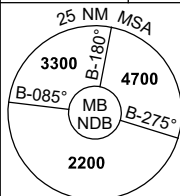
ATIS 120.9 398	TWR 118.1 123.0	SMC 134.25	FIA (AH) ML CEN 135.7	CTAF (AH) 118.1	AWIS (AH) 120.9	Bearings are Magnetic Elevations in FEET AMSL
RWY	AERODROME LIGHTING					
	ABN : FLG W 5 SEC TAXIWAY : BLUE EDGE TWY A, B, G, GREEN CENTRELINE TWY J1 RL : MAN , SDBY (15 SEC) , LGT HN RWY 13L/31R & 17L/35R ONLY					
13L ¹³⁰ ₃₁₀ 31R	MIRL MIRL					
13R ¹³⁰ ₃₁₀ 31L	NIL NIL					
17L ¹⁶⁴ ₃₄₄ 35R	MIRL MIRL					
17R ¹⁶⁴ ₃₄₄ 35L	NIL NIL					
04 ⁰³⁶ ₂₁₆ 22	NIL NIL					
NOTES						

Changes: TWY LIGHTING, Editorial.

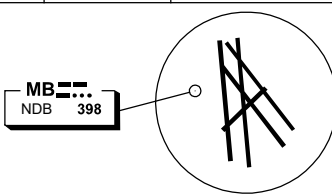
MMBAD02-181

24 MAR 2022

ATIS 120.9 398	TWR 118.1 123.0	SMC 134.25	FIA (AH) ML CEN 135.7	CTAF (AH) 118.1	AWIS (AH) 120.9	Bearings are Magnetic Elevations in FEET AMSL
-------------------	--------------------	---------------	--------------------------	--------------------	--------------------	--



REFERENCE WAYPOINT MB NDB



10 NM MSA 3700

AD ELEV 55

SECTOR A

MISSED APPROACH:
TURN RIGHT,
TRACK 158°.
CLIMB TO 2200FT.

NM FM NDB	25	15	12	8	5	0													
CIRCLING MINIMA	A,B: 1000-2.4			C: 1010-4.0			D: N/A												
NM TO MB NDB	6.4	6	5	4	3	2.7	2.6												
ALT (3° APCH PATH)	2200	2070	1750	1430	1110	1010	1000												

SECTOR B

MISSED APPROACH:
TURN AS
APPROPRIATE,
TRACK 158°.
CLIMB TO 2200FT.

NM TO MB NDB	20	15	11	8	5	0													
CIRCLING MINIMA	A,B: 1000-2.4			C: 1010-4.0			D: N/A												
NM TO MB NDB	8.7	8	7	6	5	4	3	2.7	2.6										
ALT (3° APCH PATH)	2900	2700	2390	2060	1750	1430	1110	1010	1000										

MONTY TO MB

MISSED APPROACH:
TURN LEFT,
TRACK 158°.
CLIMB TO 2200FT.

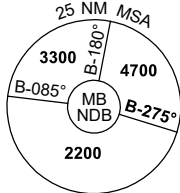
NM TO MB NDB	15	10	7	5	2	0													
CIRCLING MINIMA	A,B: 800-2.4			C: 1010-4.0			D: N/A												
NM TO MB NDB	5.5	5	4	3	2.1	1.4													
ALT (3° APCH PATH)	2100	1950	1630	1310	1010	800													

Changes: SMC FREQUENCY, Editorial.

MMBDG01-170

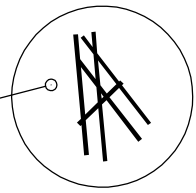
24 MAR 2022

ATIS 120.9 398	TWR 118.1 123.0	SMC 134.25	FIA (AH) ML CEN 135.7	CTAF (AH) 118.1	AWIS (AH) 120.9	Bearings are Magnetic Elevations in FEET AMSL
-------------------	--------------------	---------------	--------------------------	--------------------	--------------------	--



REFERENCE WAYPOINT MB NDB

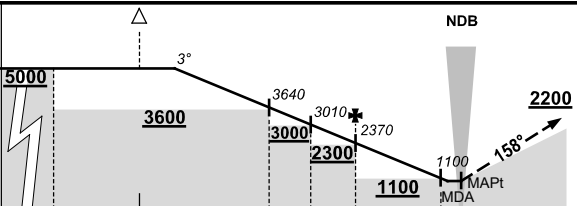
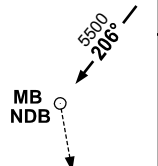
MB 398



10 NM MSA 3700

AD ELEV 55

TEMIS TO MB

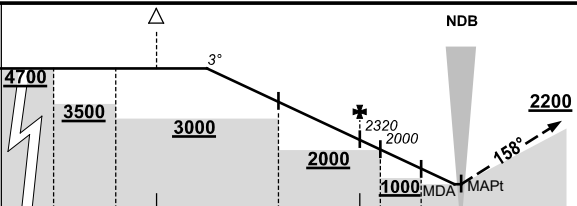
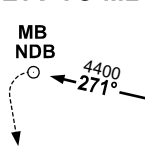


MISSED APPROACH:

TURN LEFT,
TRACK 158°.
CLIMB TO 2200FT.

NM TO MB NDB	25	19	15	9	7	5	1	0							
CIRCLING MINIMA				A,B: 1000-2.4		C: 1010-4.0		D: N/A							
NM TO MB NDB	13.3	12	11	10	9	8	7	6	5	4	3	2	1	0.7	0.6
ALT (3° APCH PATH)	5000	4600	4280	3960	3640	3330	3010	2690	2370	2050	1730	1420	1100	1010	1000

LTV TO MB



MISSED APPROACH:

TURN LEFT,
TRACK 158°.
CLIMB TO 2200FT.

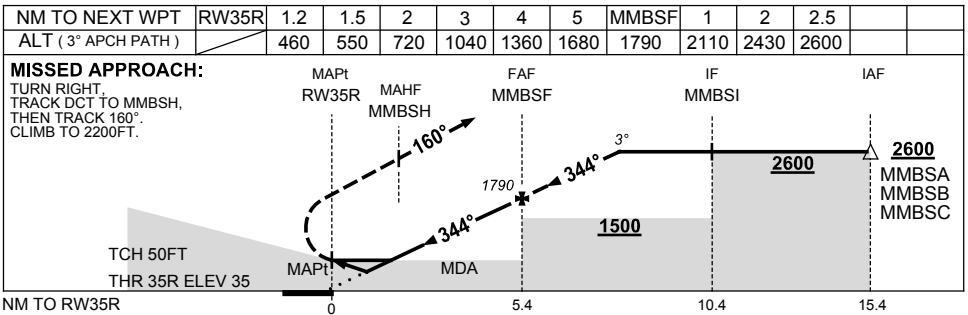
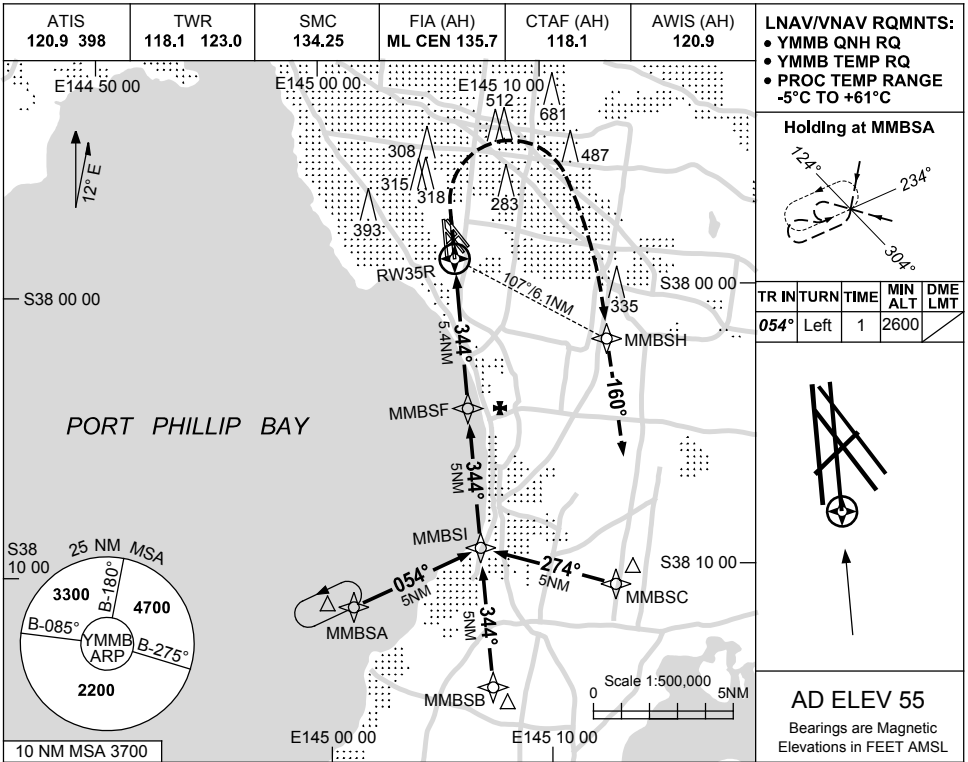
NM TO MB NDB	25	20	17	15	9	5	4	2	0						
CIRCLING MINIMA				A,B: 800-2.4		C: 1010-4.0		D: N/A							
NM TO MB NDB	12.5	12	11	10	9	8	7	6	5	4	3	2	1	0.7	0.3
ALT (3° APCH PATH)	4700	4550	4230	3910	3590	3270	2950	2640	2320	2000	1680	1360	1050	960	800

USE QNH

RNP RWY 35R

7 SEP 2023

MELBOURNE/MOORABBIN, VIC (YMMB)



NOTES

CATEGORY	A	B	C	D
LNAV/VNAV		460 (425-2.4)		NOT APPLICABLE
LNAV		550 (515-2.9)		
CIRCLING	720 (665-2.4)		1010 (955-4.0)	
ALTERNATE	(1165-4.4)		(1455-6.0)	

1. MAX IAS :
HOLDING : 210KT.
INITIAL : 210KT.

Changes: Editorial.

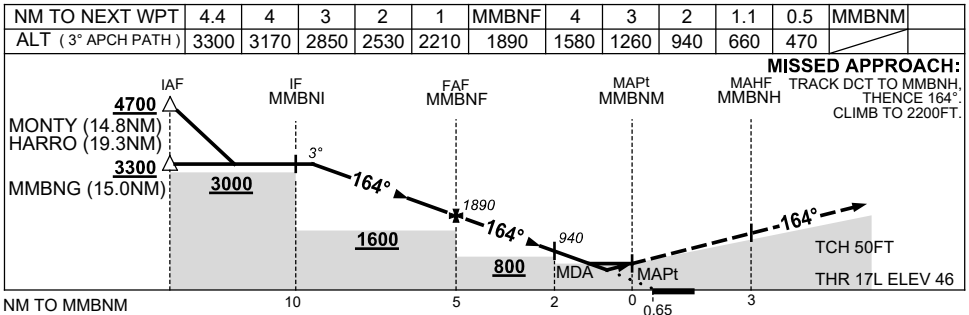
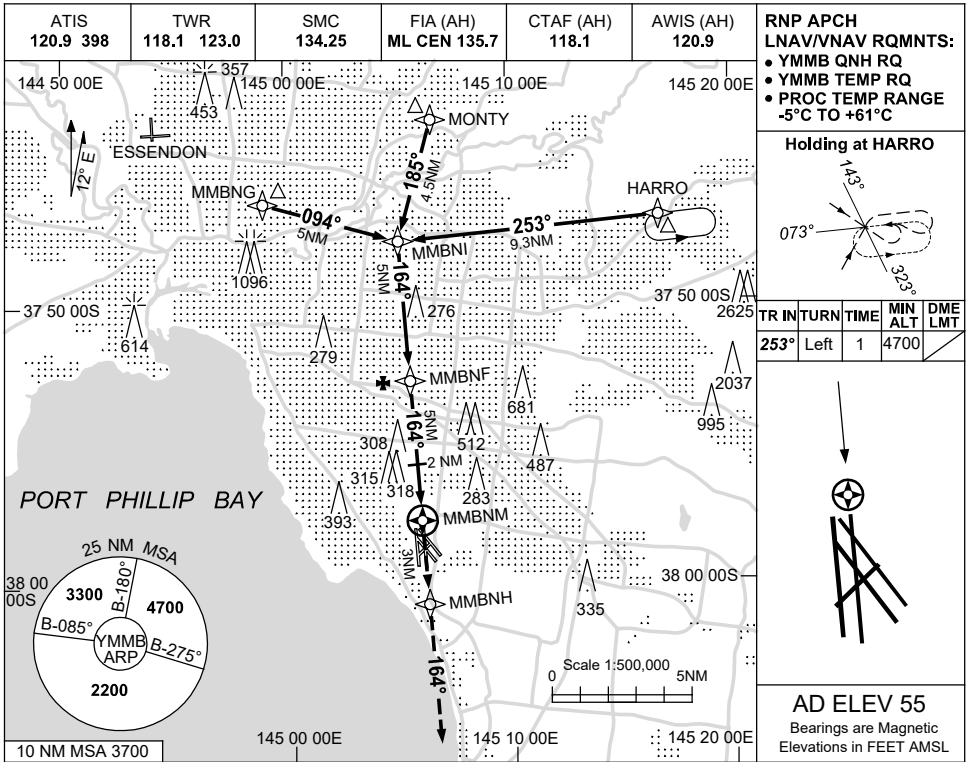
MMBGN01-176

USE QNH

RNP RYW 17L

24 MAR 2022

MELBOURNE/MOORABBIN, VIC (YMMB)



NOTES

CATEGORY	A	B	C	D	
LNAV/VNAV		470 (424-2.4)			NOT APPLICABLE
LNAV		660 (614-3.5)			
CIRCLING	720 (665-2.4)		1010 (955-4.0)		
ALTERNATE	(1165-4.4)		(1455-6.0)		

1. MAX IAS:
INITIAL : 210KT.
2. PROCEDURE LEAVES AND RE-ENTERS CONTROLLED AIRSPACE IN THE FINAL SEGMENT.
3. PROCEDURE NOT AVBL FOR TRAINING.

Changes: SMC FREQUENCY.

MMBGN02-170

