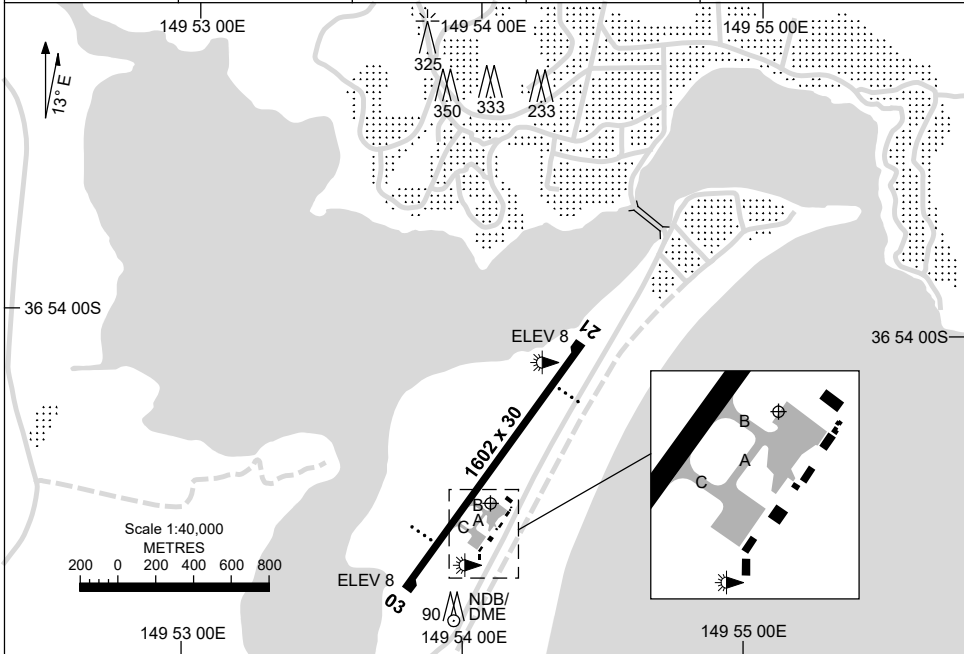


5 SEP 2024

AD ELEV 8
36 54 31S 149 54 05E

AERODROME CHART
MERIMBULA, NSW (YMER)

AWIS 133.65	FIA ML CEN 120.75	CTAF+AFRU 126.7	PAL 119.6	Bearings are Magnetic Elevations in FEET AMSL
----------------	----------------------	--------------------	--------------	--



RWY		AERODROME LIGHTING
		TAXIWAYS : BLUE EDGE RL : PAL 119.6
03 <small>021</small>		PAPI 3.3° 45.8FT LIRL
<small>201</small> 21		PAPI 3.0° 41.5FT LIRL

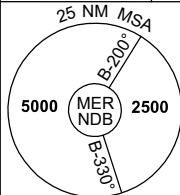
NOTES

1. AWIS ACTIVATED BY 1 SEC TRANSMISSION.

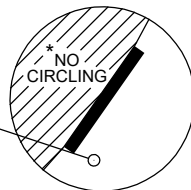
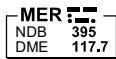
DME or GNSS ARRIVAL PROCEDURES MERIMBULA, NSW (YMER)

1 DEC 2022

AWIS 133.65	FIA ML CEN 120.75	CTAF+AFRU 126.7	PAL 119.6		Bearings are Magnetic Elevations in FEET AMSL
----------------	----------------------	--------------------	--------------	--	--



**DME USING MER DME
REFERENCE WAYPOINT MER NDB**



10 NM MSA 4200

* NO CIRCLING WEST
OF RWY 03/21

AD ELEV 8

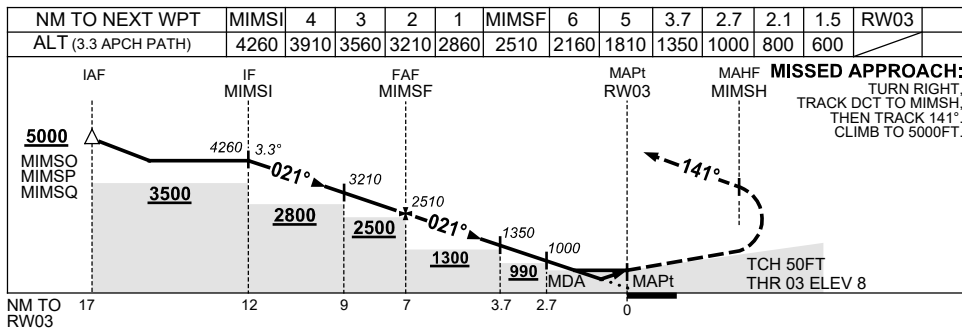
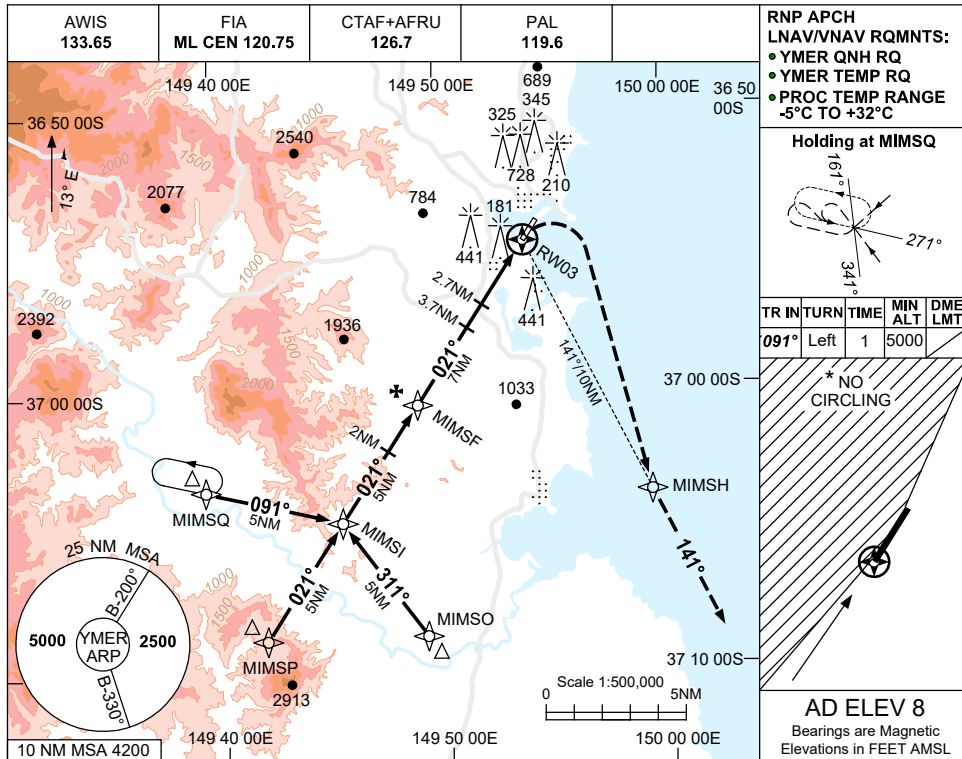
ALL ROUTES TO MER NDB												MISSED APPROACH: TURN AS APPROPRIATE, TRACK 090°. CLIMB TO 5000FT.		
	NOTE: 1. MAX IAS: MISSED APCH TURN 230KT.													
NM TO MER NDB	25	15	10	7	5	4	2	0						
CIRCLING MINIMA	A,B: 1240-2.4			C: 1270-4.0			D: N/A							
NM TO MER NDB	12.1	12	11	10	9	8	7	6	5	4	3	2	1	0.3
ALT (3° APCH PATH)	5000	4960	4640	4320	4010	3690	3370	3050	2730	2410	2100	1780	1460	1240

USE QNH

RNP RWY 03

23 MAR 2023

MERIMBULA, NSW (YMER)



NOTES

- MAX IAS: INITIAL : 210KT.
- * NO CIRCLING WEST OF RWY 03/21.
- COLOUR: SEE SPEC NOTICES.

CATEGORY	A	B	C	D
LNAV/VNAV		600 (592-3.1)		NOT APPLICABLE
LNAV		800 (792-4.1)		
CIRCLING *	1140 (1132-2.4)		1270(1262-4.0)	
ALTERNATE	(1632-4.4)		(1762-6.0)	

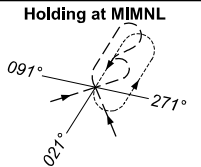
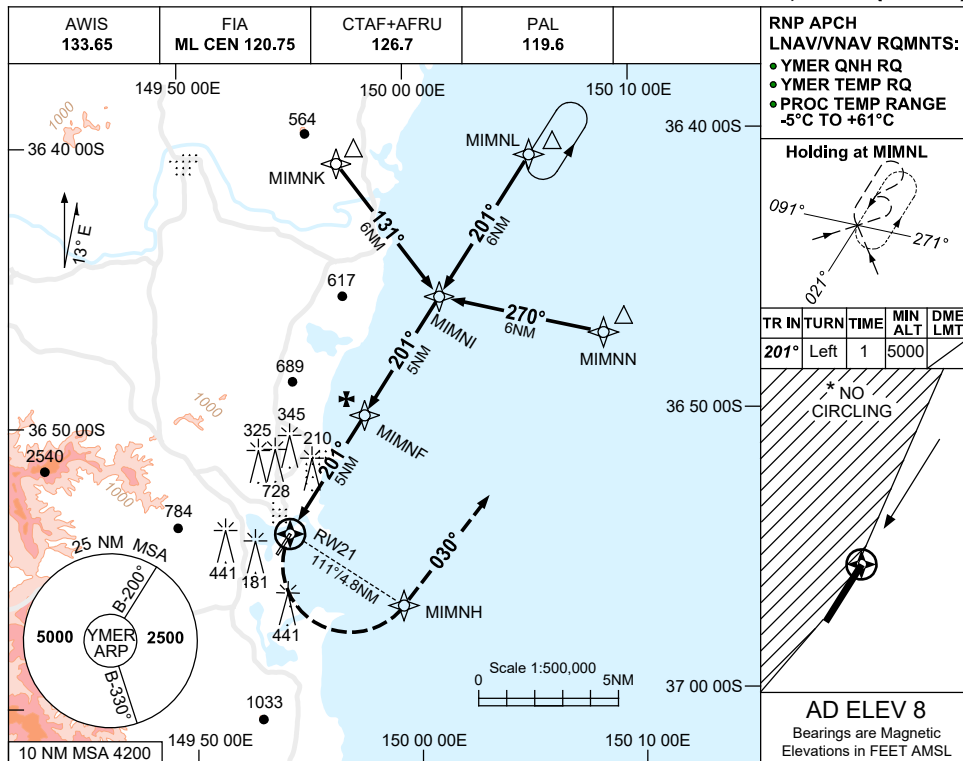
Changes: CHART TITLE, PBN SPECIFICATION BOX.

MERGN01-174

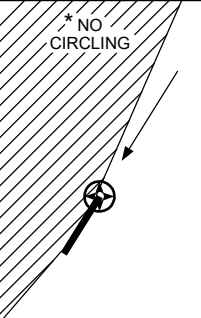
USE QNH

RNP RWY 21
MERIMBULA, NSW (YMER)

23 MAR 2023

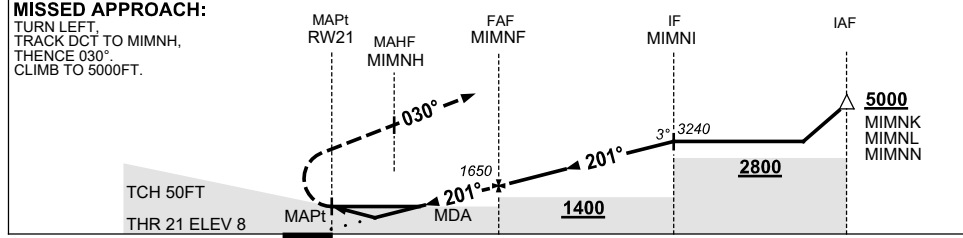


TR IN	TURN	TIME	MIN ALT	DME LMT
201°	Left	1	5000	



AD ELEV 8
Bearings are Magnetic
Elevations in FEET AMSL

NM TO NEXT WPT	RWY21	1.9	2.4	3	4	MIMNF	1	2	3	4	MIMNI		
ALT (3° APCH PATH)		670	830	1010	1330	1650	1970	2290	2610	2920	3240		



NM TO RWY21: 0, 5, 10, 16

CATEGORY	A	B	C	D
LNAV/VNAV		670 (662-3.8)		NOT APPLICABLE
LNAV		830 (822-4.7)		
CIRCLING*	1140 (1132-2.4)		1270 (1262-4.0)	
ALTERNATE	(1632-4.4)		(1762-6.0)	

- NOTES**
- MAX IAS:
INITIAL : 210KT.
 - * NO CIRCLING
WEST OF RWY 03/21.
 - COLOUR: SEE
SPEC NOTICES.

Changes: CHART TITLE, PBN SPECIFICATION BOX.

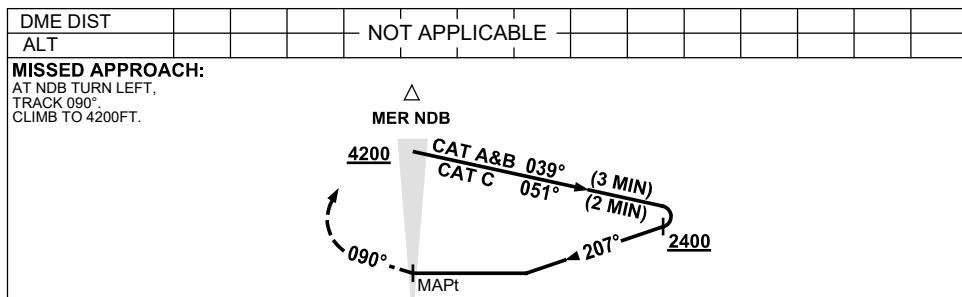
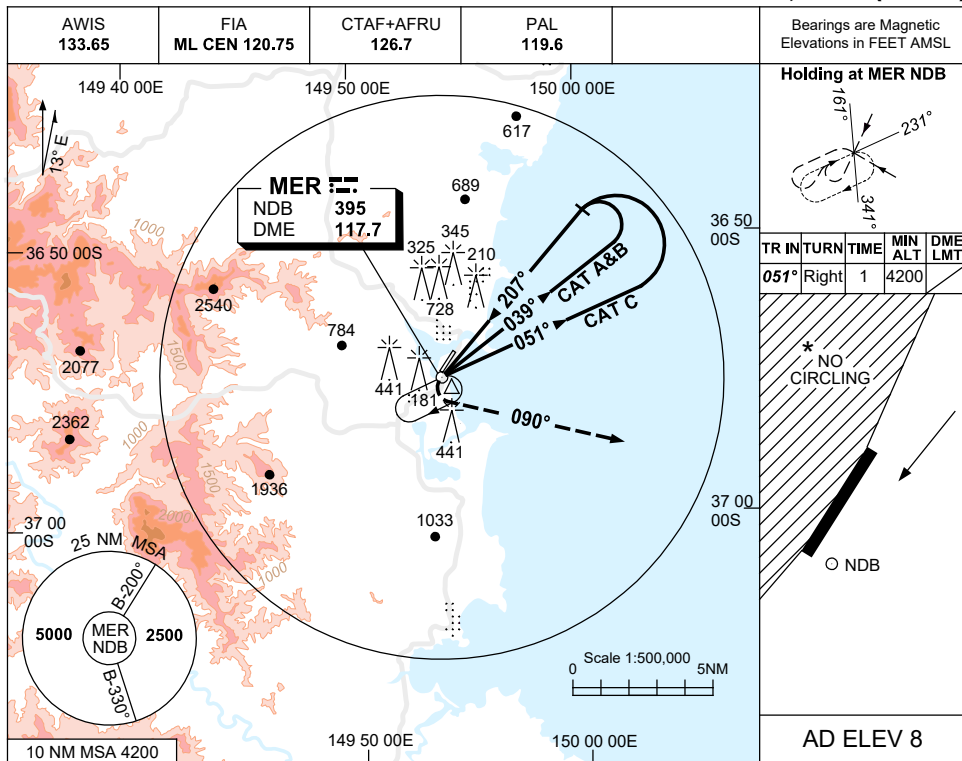
MERGN02-174

USE QNH

NDB-A

9 SEP 2021

MERIMBULA, NSW (YMER)



NOTES

CATEGORY	A	B	C	D
CIRCLING*	1140 (1132-2.4)	1270 (1262-4.0)	NOT APPLICABLE	
ALTERNATE	(1632-4.4)	(1762-6.0)		

1. MAX IAS: INITIAL : 210KT.
- * 2. NO CIRCLING WEST OF RWY 03/21.
3. COLOUR: SEE SPEC NOTICES.

Changes: AD ELEV, MINIMA.

MERNB01-168