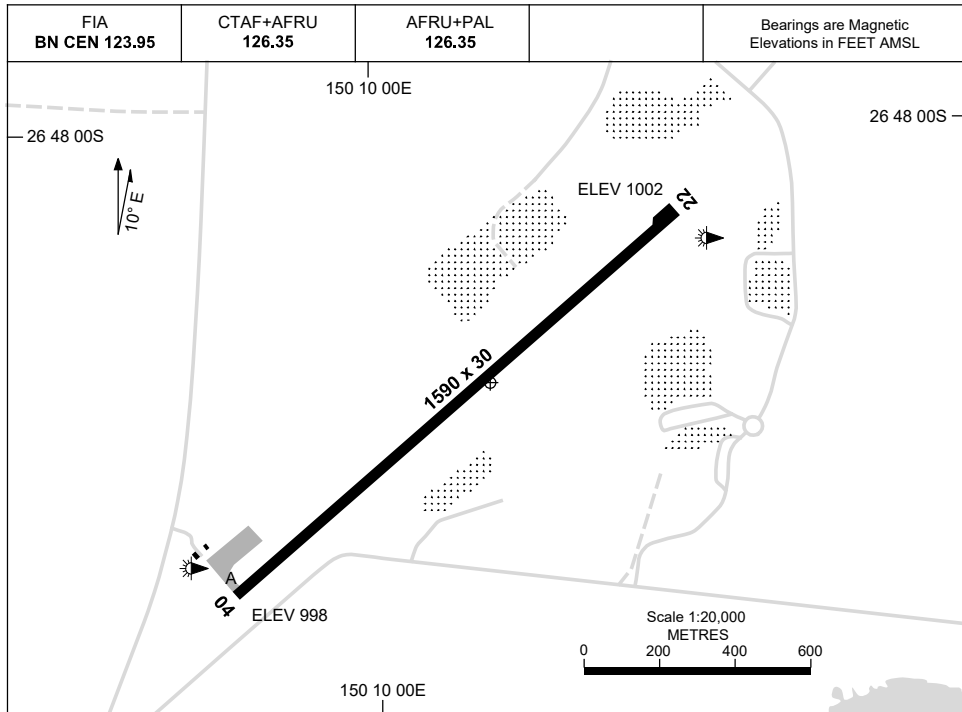


8 SEP 2022

AD ELEV 1002
26 48 22S 150 10 11E

AERODROME CHART
MILES, QLD (YMLS)



	AERODROME LIGHTING
RWY	TAXIWAY : BLUE EDGE RL : AFRU+PAL 126.35 , SDBY (11 SEC)
04 ⁰⁴⁰	LIRL
²²⁰ 22	LIRL

NOTES

1. FIA FREQ 123.95 AVBL IN CIRCUIT.

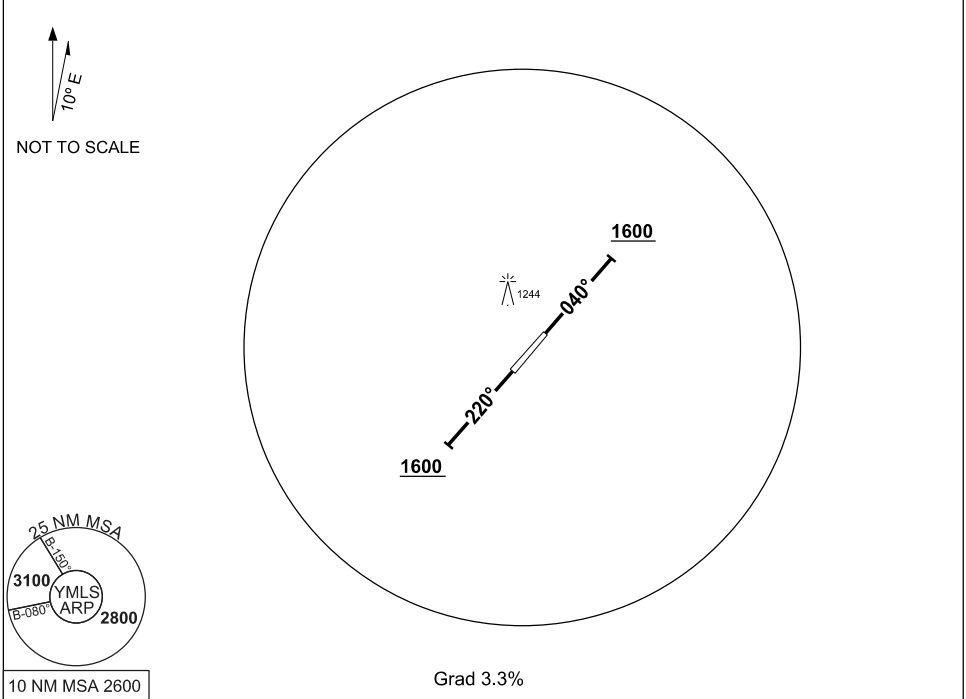
Changes: SDBY SWITCH TIME, TWY LIGHTING.

MLSAD01-172

**STANDARD INSTRUMENT DEPARTURE (SID)
MILES ONE DEPARTURE
MILES, QLD (YMLS)**

23 MAR 2023

FIA BN CEN 123.95	CTAF+AFRU 126.35	AFRU+PAL 126.35			Bearings are Magnetic Elevations in FEET AMSL
-----------------------------	----------------------------	---------------------------	--	--	--------------------------------------------------



MILES ONE DEPARTURE

RWY 04

- Track 040°
- At or above 1600FT turn as required
- Intercept flight plan route

RWY 22

- Track 220°
- At or above 1600FT turn as required
- Intercept flight plan route

NOTES

- NIL -

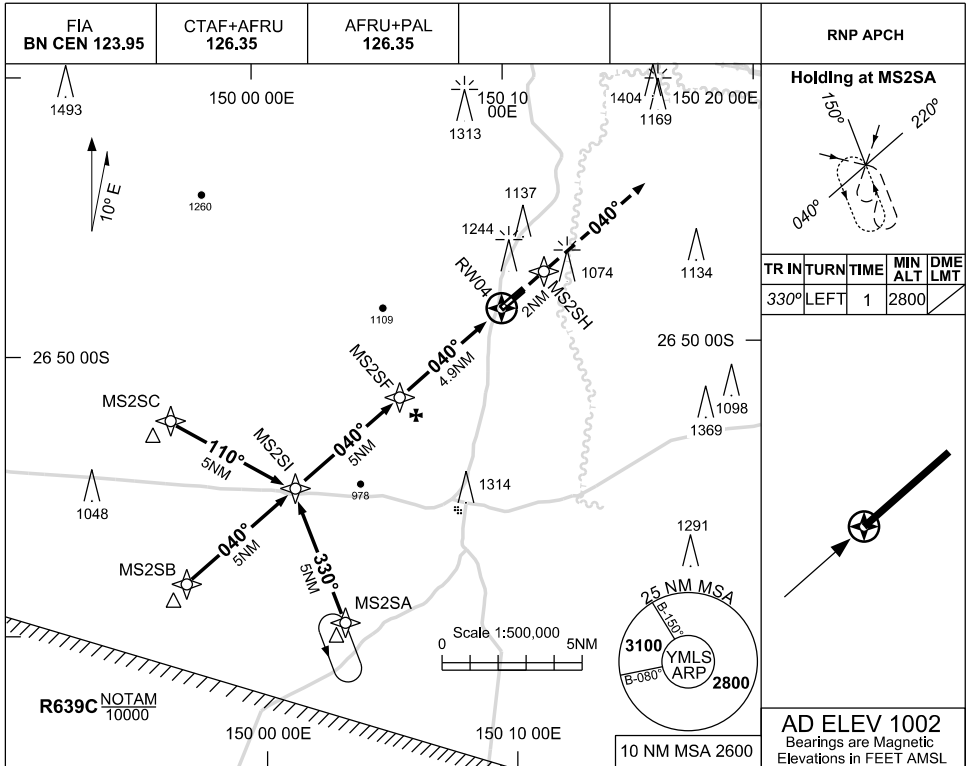
Changes: 25NM MSA.

MLSDP01-174

USE QNH

RNP RWY 04
MILES, QLD (YMLS)

23 MAR 2023

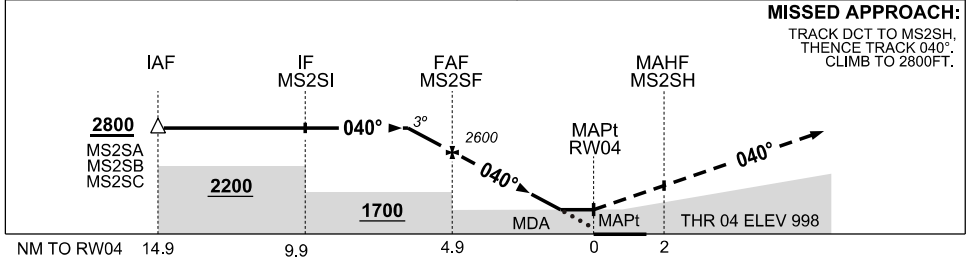


TR IN	TURN	TIME	MIN ALT	DME LMT
330°	LEFT	1	2800	

AD ELEV 1002
Bearings are Magnetic
Elevations in FEET AMSL

NM TO NEXT WPT	1.6	MS2SF	4	3	2	1.7	RW04												
ALT (3° APCH PATH)	2800	2600	2320	2010	1690	1590													

MISSED APPROACH:
TRACK DCT TO MS2SH,
THENCE TRACK 040°.
CLIMB TO 2800FT.



- NOTES**
- MAX IAS:
INITIAL : 210KT.
HOLDING : 210KT.

CATEGORY	A	B	C	D
LNAV	1590 (588 - 3.3)			NOT APPLICABLE
CIRCLING	1690 (688 - 2.4)		1800(798 - 4.0)	
ALTERNATE	(2190 - 4.4)		(2300 - 6.0)	

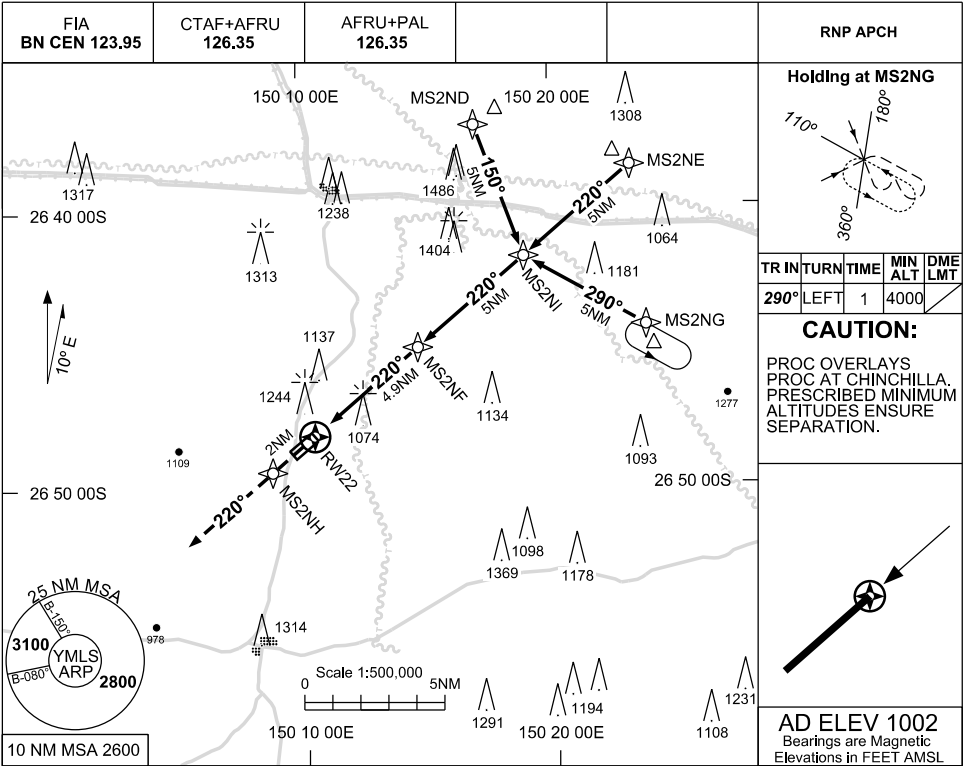
Changes: 25NM MSA, WPT IDENT.

MLSGN01-174

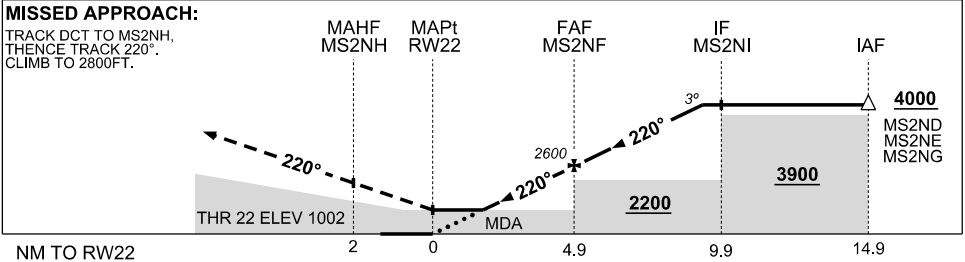
USE QNH

RNP RWY 22
MILES, QLD (YMLS)

23 MAR 2023



NM TO NEXT WPT	RW22	1.7	2	3	4	MS2NF	1	2	3	4	4.4						
ALT (3° APCH PATH)		1580	1690	2010	2330	2600	2910	3230	3550	3870	4000						



NOTES

- MAX IAS: INITIAL : 210KT. HOLDING : 210KT.

CATEGORY	A	B	C	D
LNAV	1580 (578 - 3.3)			NOT APPLICABLE
CIRCLING	1690 (688 - 2.4)		1800 (798 - 4.0)	
ALTERNATE	(2190 - 4.4)		(2300 - 6.0)	

Changes: 25NM MSA, WPT IDENT.

MLSGN02-174