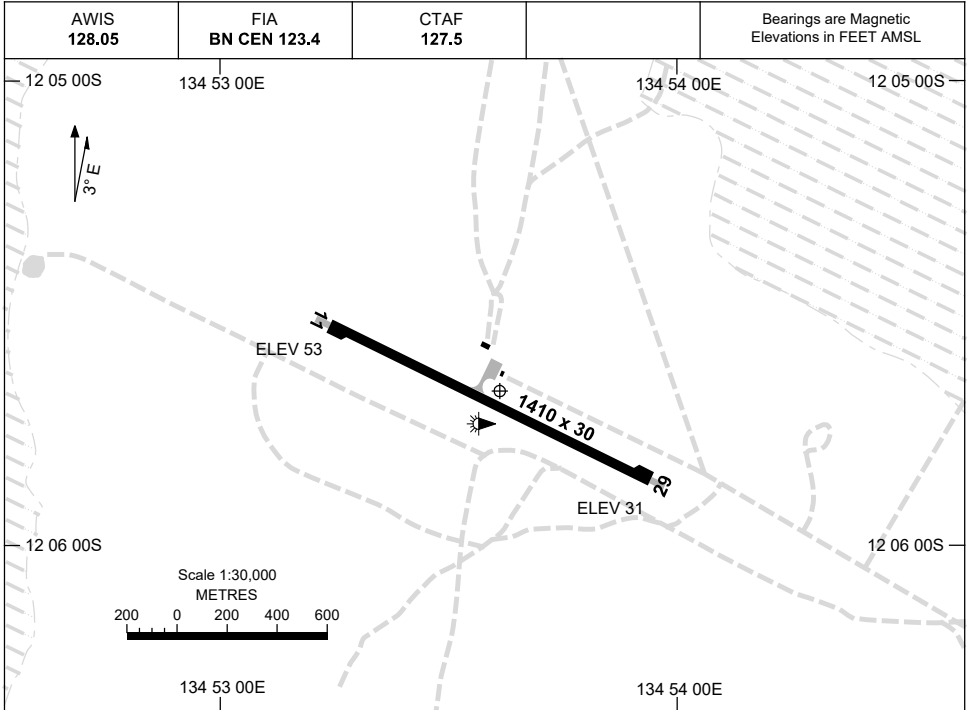


16 JUN 2022

AD ELEV 53
12 05 40S 134 53 37E

AERODROME CHART
MILINGIMBI, NT (YMGB)



	AERODROME LIGHTING
RWY	
11 ¹¹³ 293 29	LIRL LIRL

NOTES

1. AWIS RQ ONE-SECOND PULSE TO ACTIVATE.
2. FIA FREQ 123.4 AVBL IN CIRCUIT AREA.

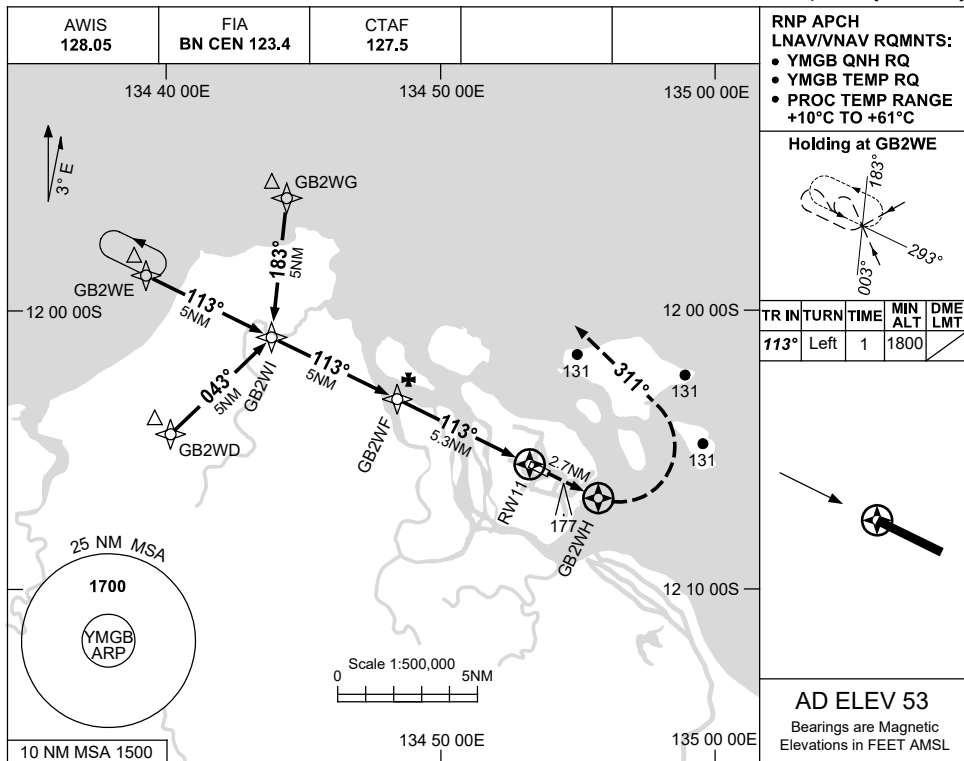
Changes: MAG VAR, THR ELEV.

MGBAD01-171

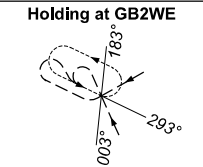
USE QNH

RNP RWY 11
MILINGIMBI, NT (YMGB)

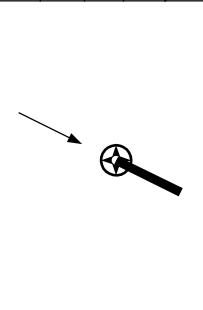
8 SEP 2022



RNP APCH
LNAV/VNAV RQMNTS:
• YMGB QNH RQ
• YMGB TEMP RQ
• PROC TEMP RANGE
+10°C TO +61°C

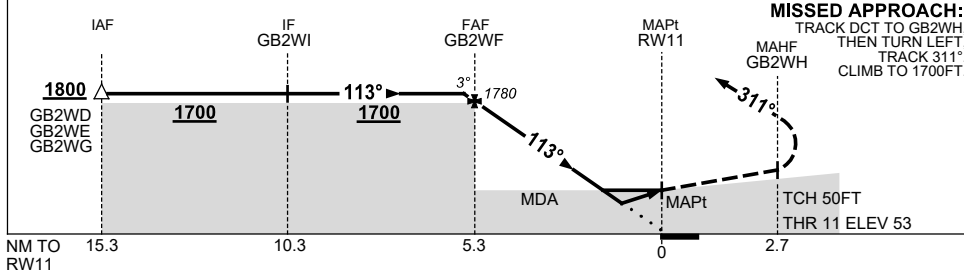


TR	IN	TURN	TIME	MIN ALT	DME LMT
113°	Left	1	1800		



AD ELEV 53
Bearings are Magnetic
Elevations in FEET AMSL

NM TO NEXT WPT	0.1	GB2WF	4	3	2	1.6	1	RW11
ALT (3° APCH PATH)	1800	1780	1380	1060	740	620	420	



MISSED APPROACH:
TRACK DCT TO GB2WH,
THEN TURN LEFT,
TRACK 311°,
CLIMB TO 1700FT.

NOTES

CATEGORY	A	B	C	D
LNAV/VNAV	420 (367-2.1)			NOT APPLICABLE
LNAV	620 (567-3.2)			
CIRCLING	660 (607-2.4)		760 (707-4.0)	
ALTERNATE	(1107-4.4)		(1207-6.0)	

1. MAX IAS:
INITIAL : 210KT.

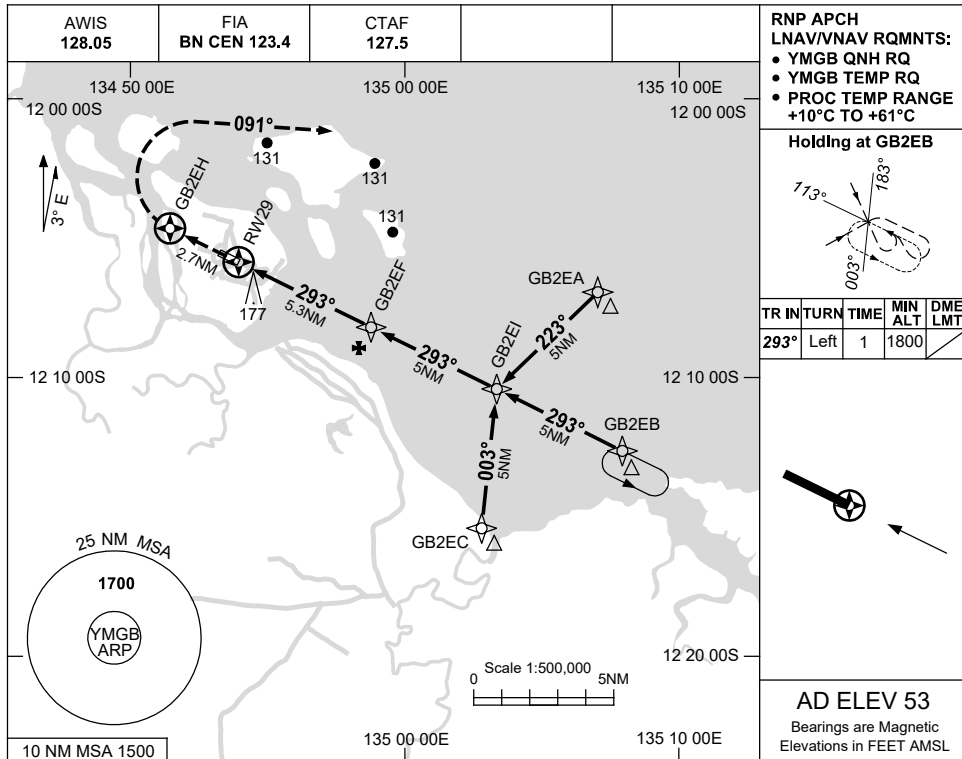
Changes: CHART TITLE, PBN SPECIFICATION BOX.

MGBGN01-172

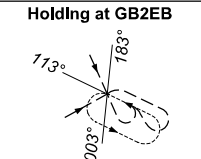
USE QNH

RNP RWY 29
MILINGIMBI, NT (YMGB)

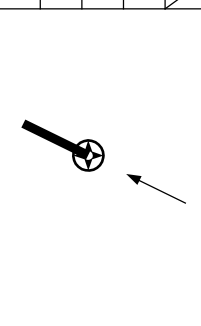
8 SEP 2022



RNP APCH
LNAV/VNAV RQMNTS:
• YMGB QNH RQ
• YMGB TEMP RQ
• PROC TEMP RANGE
+10°C TO +61°C

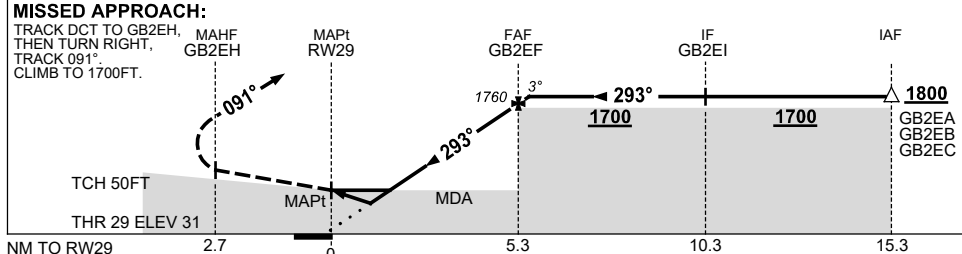


TR	IN	TURN	TIME	MIN ALT	DME LMT
293°	Left	1	1800		



AD ELEV 53
Bearings are Magnetic
Elevations in FEET AMSL

NM TO NEXT WPT	RW29	1.1	1.7	3	4	GB2EF	0.1				
ALT (3° APCH PATH)		420	620	1040	1350	1760	1800				



NOTES

CATEGORY	A	B	C	D
LNAV/VNAV		420 (389-2.2)		NOT APPLICABLE
LNAV		620 (589-3.3)		
CIRCLING	660 (607-2.4)		760 (707-4.0)	
ALTERNATE	(1107-4.4)		(1207-6.0)	

1. MAX IAS:
INITIAL : 210KT.

Changes: CHART TITLE, PBN SPECIFICATION BOX.

MGBGN02-172