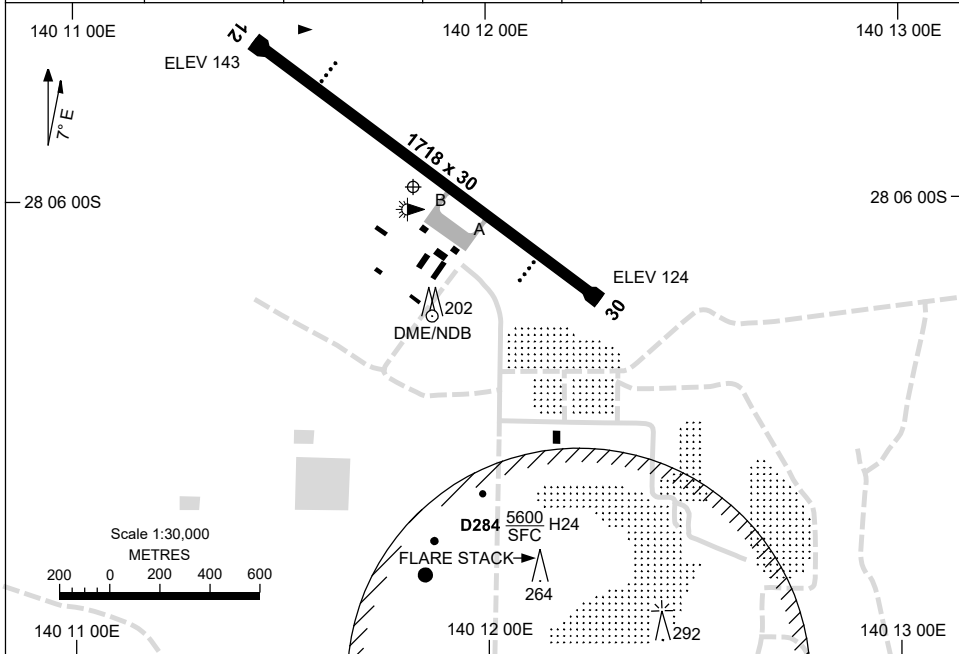


30 NOV 2023

AD ELEV 143  
28 05 58S 140 11 49E

AERODROME CHART  
**MOOMBA, SA (YOOM)**

AWIS 128.55	FIA ML CEN 119.5	CTAF+AFRU 126.7	PAL+AA 120.6	Bearings are Magnetic Elevations in FEET AMSL
----------------	---------------------	--------------------	-----------------	--



AERODROME LIGHTING	
<b>RWY</b>	TAXIWAY : BLUE EDGE (TWY A & B) RL : PAL+AA 120.6 , SDBY (9 SEC) , PTBL (EMERG ONLY, 60MIN PN)
<b>12</b> <sup>120</sup>	PAPI 3.0° 52FT LIRL
<sup>300</sup> <b>30</b>	PAPI 3.0° 52FT LIRL

**NOTES**

1. ALL OPS - ADVISE ADO 20MIN PN ON 126.4.

Changes: TURN PADS, NOTE 1, UNICOM REMOVED, Editorial.

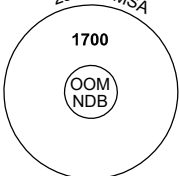
OOMAD01-177

# DME or GNSS ARRIVAL PROCEDURES MOOMBA, SA (YOOM)

30 NOV 2023

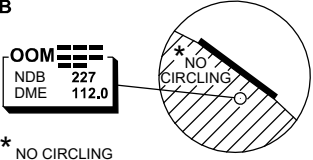
AWIS 128.55	FIA ML CEN 119.5	CTAF+AFRU 126.7	PAL+AA 120.6		Bearings are Magnetic Elevations in FEET AMSL
----------------	---------------------	--------------------	-----------------	--	--

25 NM MSA



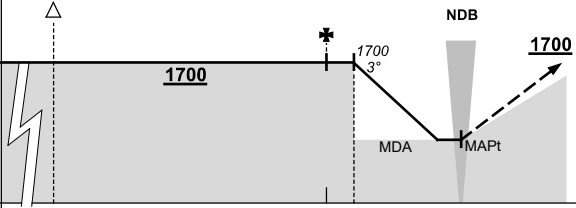
10 NM MSA 1500

**DME USING OOM DME  
REFERENCE WAYPOINT OOM NDB**



\* NO CIRCLING SOUTH OF RWY 12/30.

**AD ELEV 143**

<b>ALL ROUTES TO OOM NDB</b>						<p><b>MISSED APPROACH:</b> CLIMB ON TRACK TO 1700FT.</p> <p><b>CAUTION:</b> PROCEDURE DOES NOT REMAIN CLEAR OF D284.</p>
	NM TO OOM NDB	25	15	5	4	0
<b>CIRCLING MINIMA</b>			A,B: 740-2.4	C: 840-4.0	D: N/A	
NM TO OOM NDB	4	3	2	1.3	1	
ALT (3° APCH PATH)	1700	1380	1060	840	740	

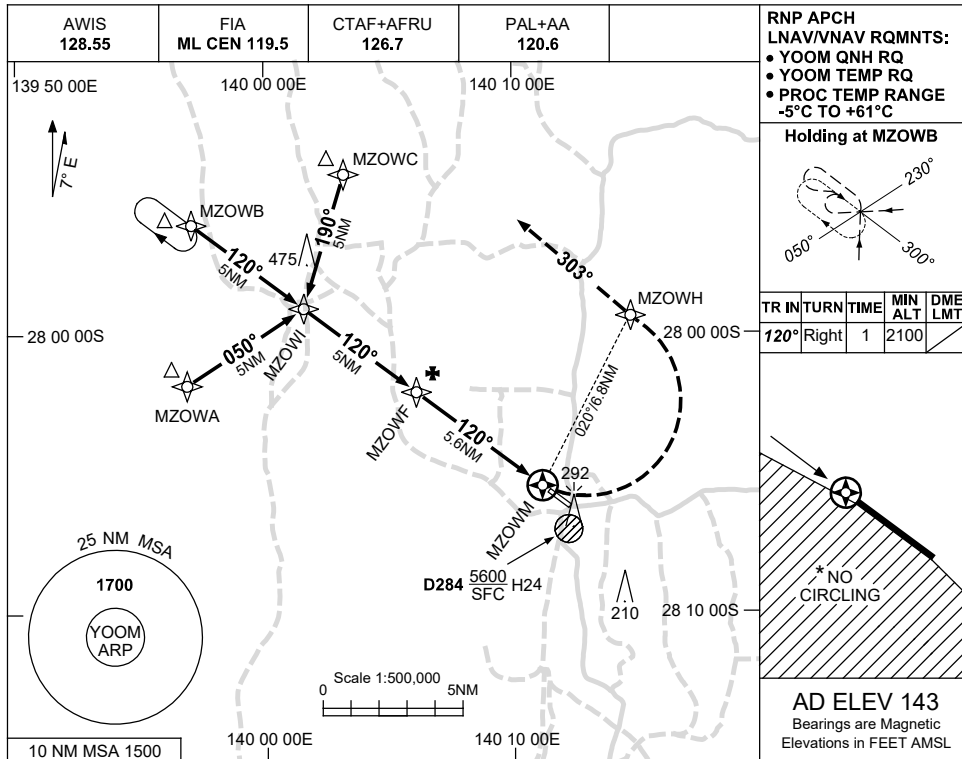
Changes: UNICOM REMOVED.

OOMDG01-177

USE QNH

RNP RWY 12  
MOOMBA, SA (YOOM)

30 NOV 2023

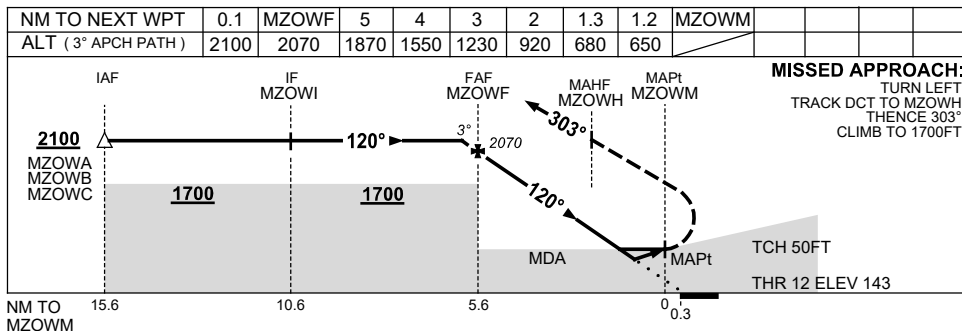


**RNP APCH**  
LNAV/VNAV RQMTS:  
• YOOM QNH RQ  
• YOOM TEMP RQ  
• PROC TEMP RANGE  
-5°C TO +61°C

**Holding at MZOWB**

TR IN	TURN	TIME	MIN ALT	DME LMT
120°	Right	1	2100	

**AD ELEV 143**  
Bearings are Magnetic  
Elevations in FEET AMSL



**NOTES**

CATEGORY	A	B	C	D
LNAV/VNAV		650 (507-2.9)		NOT APPLICABLE
LNAV		680 (537-3.0)		
CIRCLING *	740 (597-2.4)		840 (697-4.0)	
ALTERNATE	(1097-4.4)		(1197-6.0)	

- MAX IAS: ; 210KT.  
INITIAL MAP TURN: 190KT.
- \* NO CIRCLING S OF RWY 12/30.

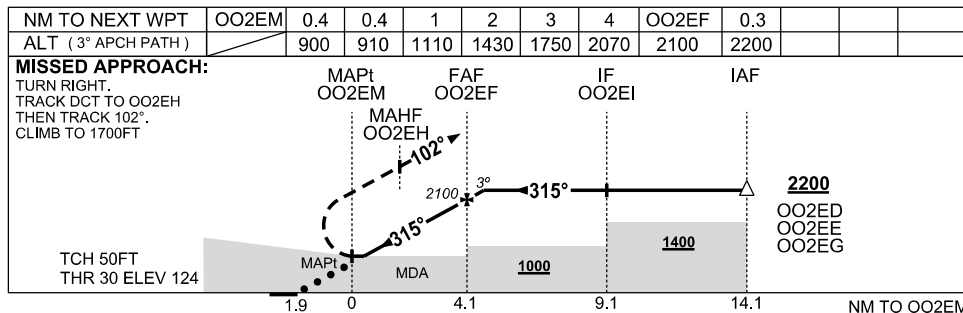
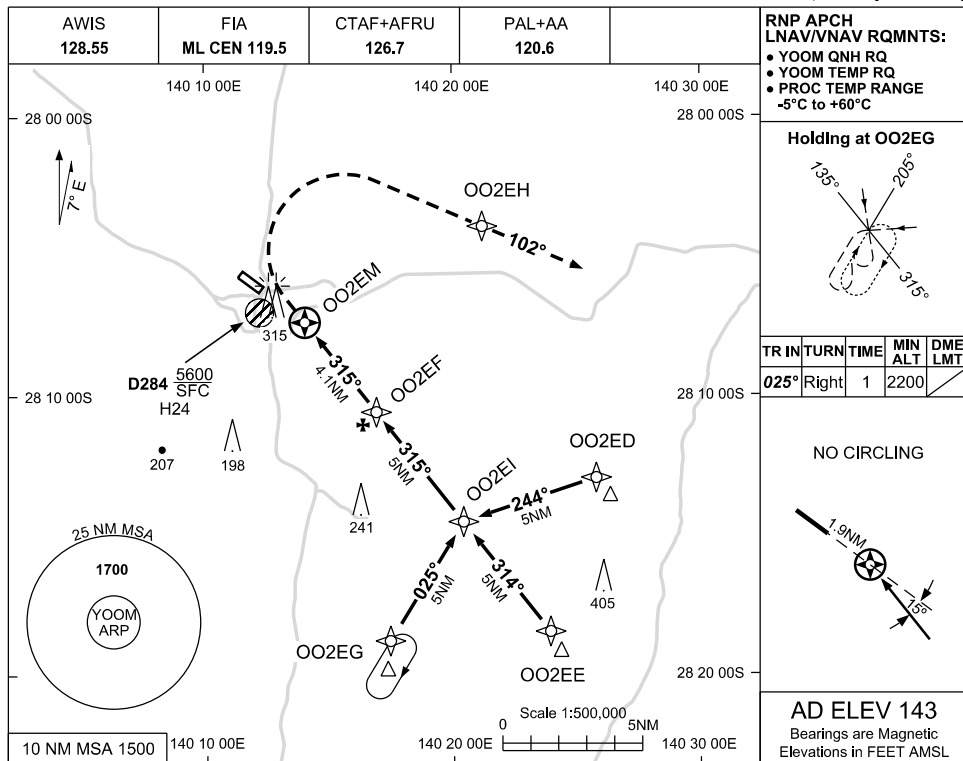
Changes: UNICOM REMOVAL, Editorial.

OOMGN01-177

USE QNH

RNP RWY 30  
MOOMBA, SA (YOOM)

30 NOV 2023



**NOTES**

CATEGORY	A	B	C	D
LNAV/VNAV		910 (786-4.5)		NOT AUTHORISED
LNAV		900 (776-4.4)		
CIRCLING	NOT AUTHORISED		NOT AUTHORISED	
ALTERNATE	(1097-4.4)		(1197-6.0)	

1. MAX IAS:  
INITIAL : 210KT  
MAP TURN: 210KT

Changes: UNICOM REMOVED, EDITORIAL.

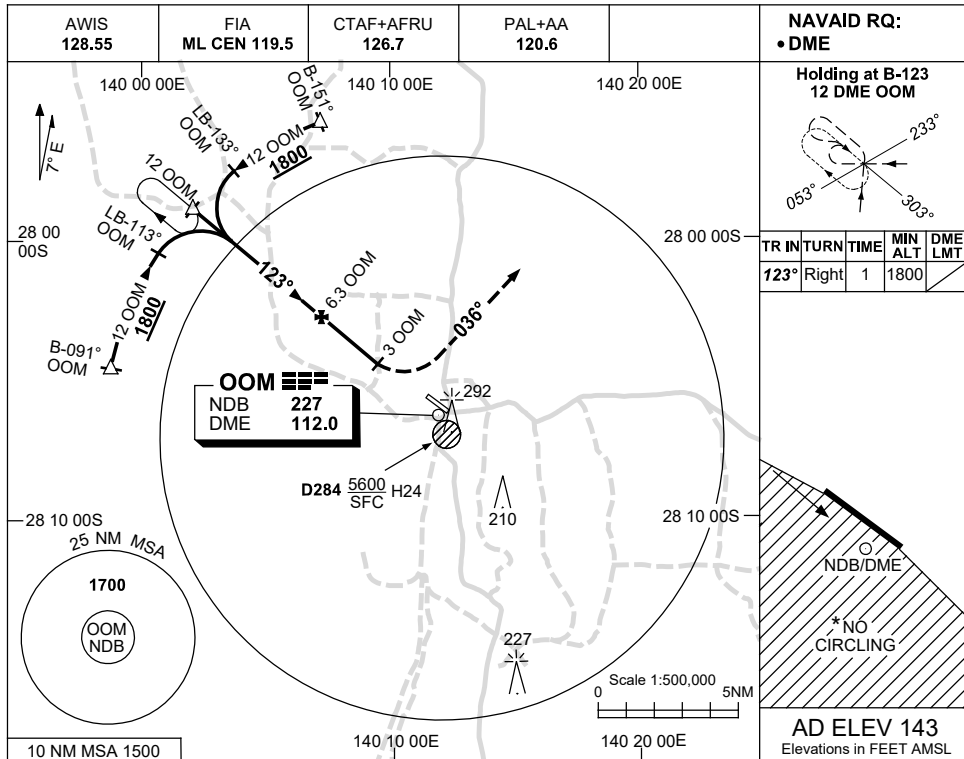
OOMGN02-177

USE QNH

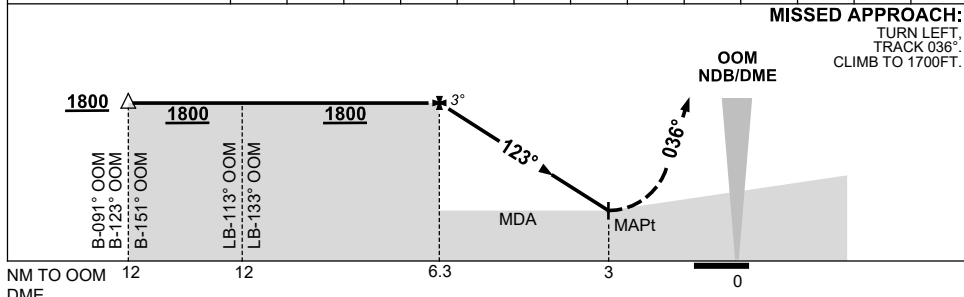
NDB-A

30 NOV 2023

MOOMBA, SA (YOOM)



NM TO OOM DME	6.3	6	5	4	3								
ALT (3° APCH PATH)	1800	1700	1380	1060	740								



**NOTES**

CATEGORY	A	B	C	D	
			NOT APPLICABLE		
CIRCLING *	740 (597-5.6)				
ALTERNATE	(1097-7.6)				

1. MAX IAS: MAP TURN: 140KT.
- \*2. NO CIRCLING STH OF RWY 12/30.

Changes: UNICOM REMOVED, Editorial.

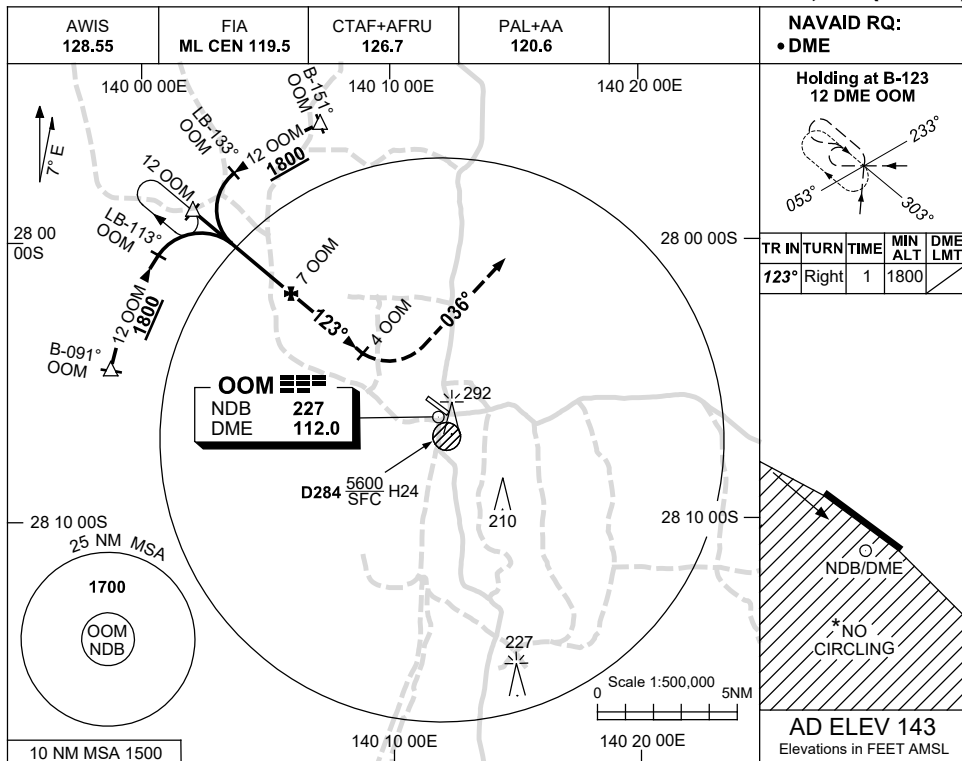
OOMNB01-177

USE QNH

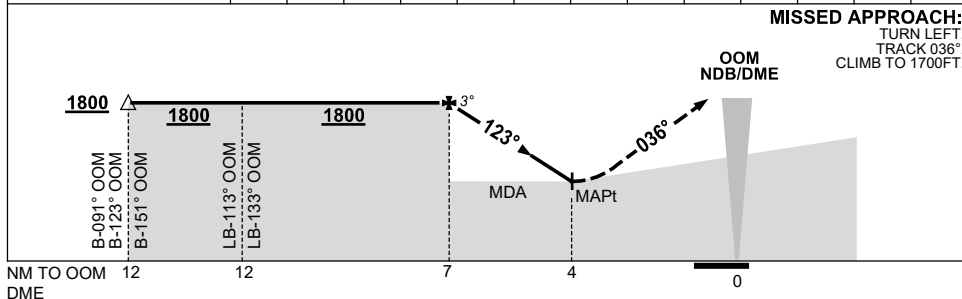
NDB-B

30 NOV 2023

MOOMBA, SA (YOOM)



NM TO OOM DME	7	6	5	4									
ALT (3° APCH PATH)	1800	1480	1160	840									



**NOTES**

CATEGORY	A	B	C	D
	NOT APPLICABLE			NOT APPLICABLE
CIRCLING *			<b>840</b> (697-7.5)	
ALTERNATE			(1197-8.0)	

1. MAX IAS:  
INITIAL : 210KT.  
MAP TURN: 180KT.
2. NO CIRCLING STH  
OF RWY 12/30.

Changes: UNICOM REMOVED, Editorial.

OOMNB02-177