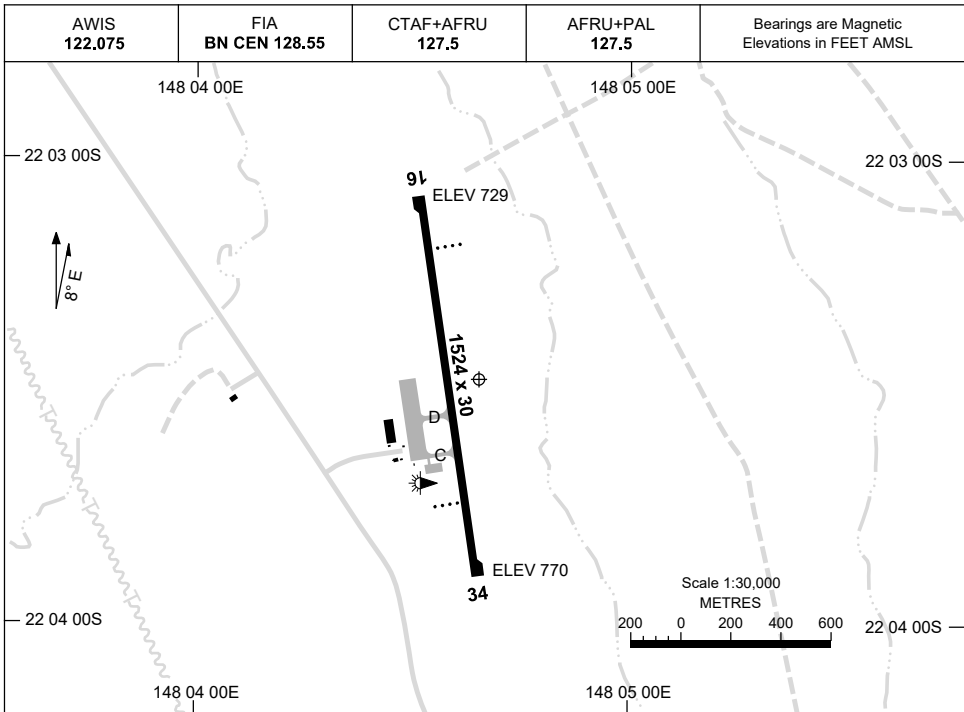


30 NOV 2023

AD ELEV 770  
22 03 28S 148 04 39E

AERODROME CHART  
**MORANBAH, QLD (YMRB)**



	<b>AERODROME LIGHTING</b>
<b>RWY</b>	RL : AFRU+PAL 127.5 , SDBY
<b>16</b> <small>163</small>	PAPI 3.0° 48FT LIRL RTIL
<small>343</small> <b>34</b>	PAPI 3.0° 48FT LIRL RTIL

**NOTES**

1. AWIS RQ 1 SEC PULSE TO ACTIVATE.
2. FIA FREQ 128.55 AVBL CIRCUIT AREA.  
FOR ON GROUND COM USE BN CEN 118.45.

Changes: SWITCHOVER TIME REMOVED, PAPI HEIGHT, Editorial.

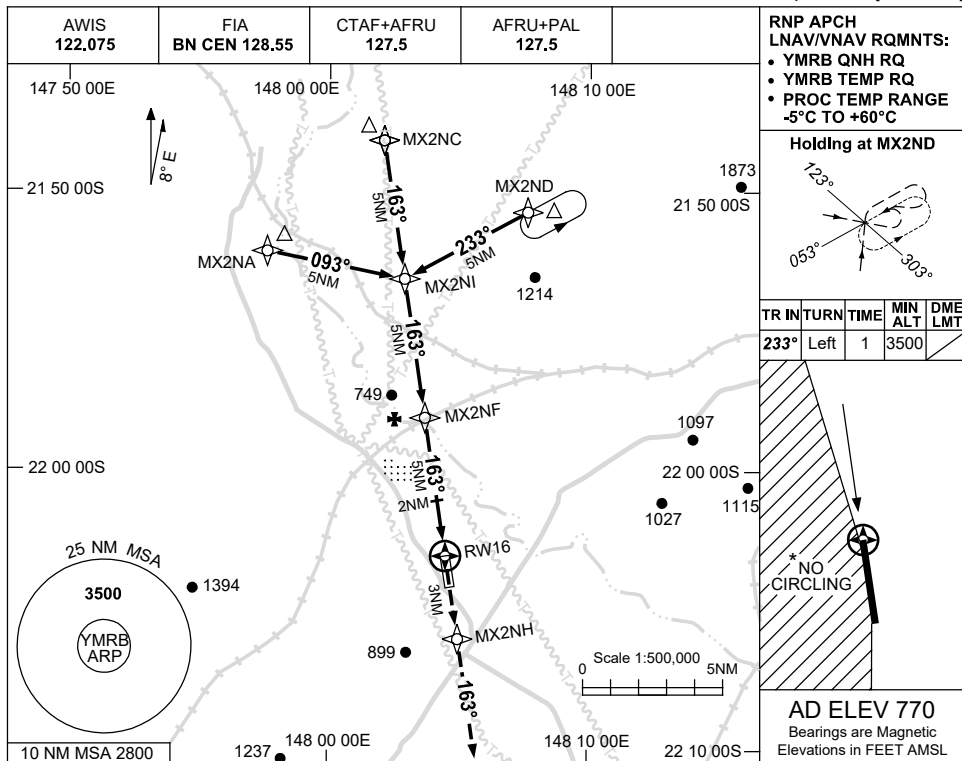
MRBAD01-177

USE QNH

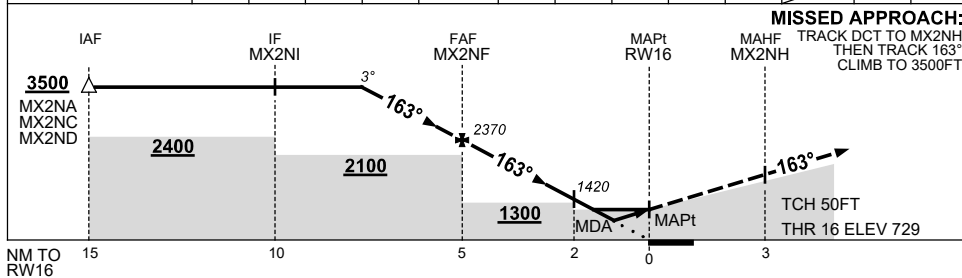
RNP RWY 16

13 JUN 2024

MORANBAH, QLD (YMRB)



NM TO NEXT WPT	3.6	3	2	1	MX2NF	4	3	2	1.5	0.9	RW16		
ALT (3° APCH PATH)	3500	3330	3010	2690	2370	2050	1730	1420	1250	1060			



**NOTES**

CATEGORY	A	B	C	D
LNAV/VNAV		1060 (331-1.8)		NOT APPLICABLE
LNAV		1250 (521-2.9)		
CIRCLING	1580 (810-2.4)		1680 (910-4.0)	
ALTERNATE		(1310-4.4)	(1410-6.0)	

- MAX IAS: INITIAL : 210KT.
- BLASTING OPS WITHIN 5NM OF AD.
- \*3. NO CIRLING WEST OF RWY 16/34.

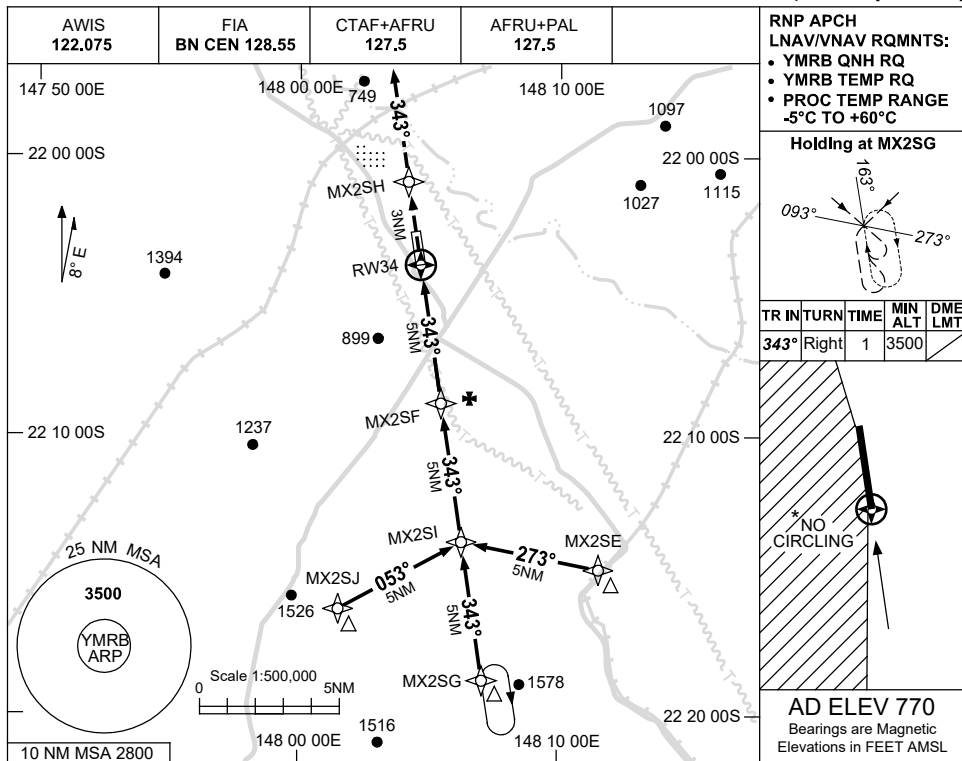
Changes: NO CIRCLING, WPT NAMING CONVENTION, NOTE.

MRBGN01-179

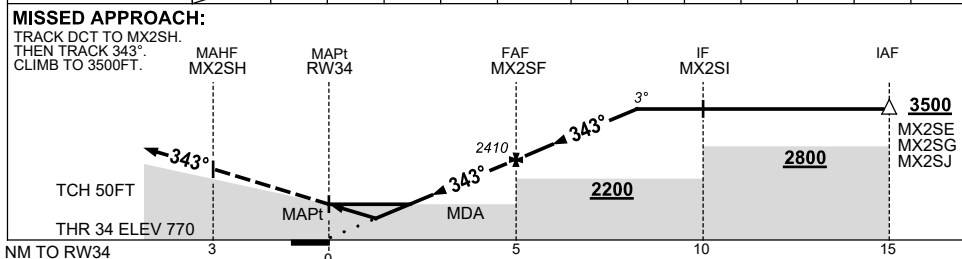
USE QNH

RNP RWY 34  
MORANBAH, QLD (YMRB)

13 JUN 2024



NM TO NEXT WPT	RW34	0.9	1.9	3	4	MX2SF	1	2	3	3.5		
ALT (3° APCH PATH)		1120	1440	1780	2090	2410	2730	3050	3370	3500		



**NOTES**

CATEGORY	A	B	C	D
LNAV/VNAV		1120 (350-2.0)		NOT APPLICABLE
LNAV		1440 (670-3.8)		
CIRCLING	1580 (810-2.4)		1680 (910-4.0)	
ALTERNATE		(1310-4.4)	(1410-6.0)	

- MAX IAS: INITIAL : 210KT.
- BLASTING OPS WITHIN 5NM OF AD.
- \*3. NO CIRLING WEST OF RWY 16/34.

Changes: NO CIRCLING, WPT NAMING CONVENTION, NOTE.

MRBG02-179