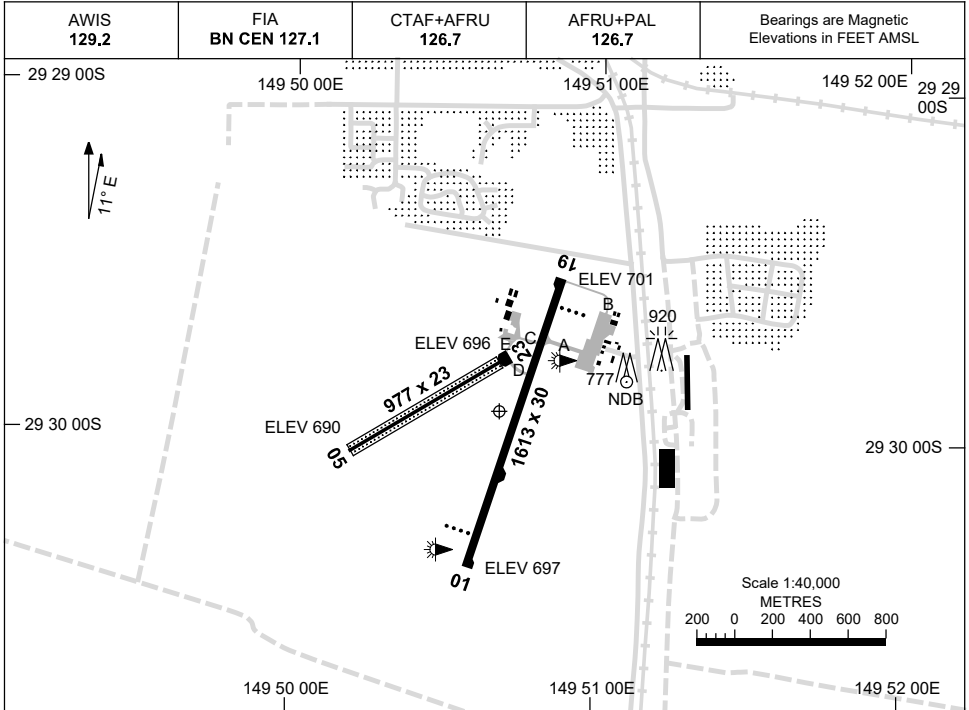


13 JUN 2024

AD ELEV 701
29 29 56S 149 50 41E

AERODROME CHART
MOREE, NSW (YMOR)



	AERODROME LIGHTING	
RWY	TAXIWAY : BLUE EDGE TWY A ONLY RL : AFRU+PAL 126.7 , SDBY (15 SEC)	
01 ⁰⁰⁷ <small>187</small> 19	PAPI 3.0° 51FT LIRL PAPI 3.0° 51FT LIRL	
05 ⁰⁴⁸ <small>228</small> 23	NIL NIL	

NOTES

1. RWY 05/23 CENTRAL 10M SEALED.

CAUTION: KANGAROO HAZARD EXISTS.

Changes: RWY BEARING.

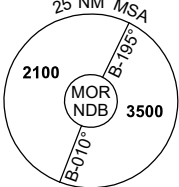
MORAD01-179

GNSS ARRIVAL PROCEDURES MOREE, NSW (YMOR)

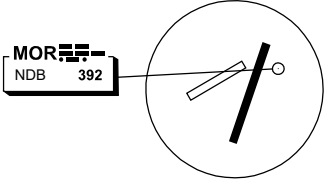
13 JUN 2024

AWIS 129.2	FIA BN CEN 127.1	CTAF+AFRU 126.7	AFRU+PAL 126.7		Bearings are Magnetic Elevations in FEET AMSL
---------------	---------------------	--------------------	-------------------	--	--

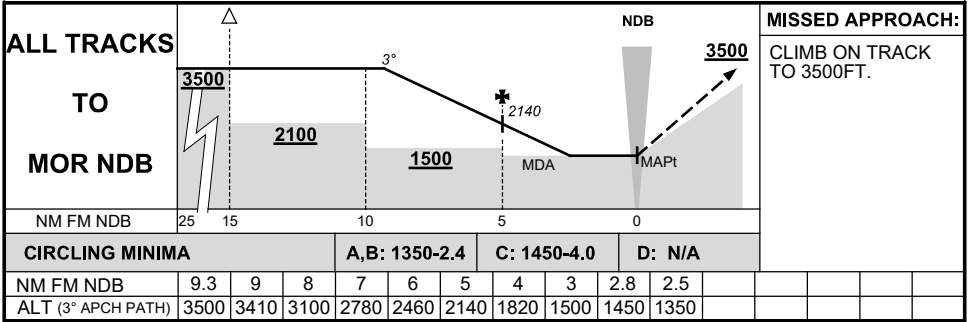
REFERENCE WAYPOINT MOR NDB



10 NM MSA 2100



AD ELEV 701



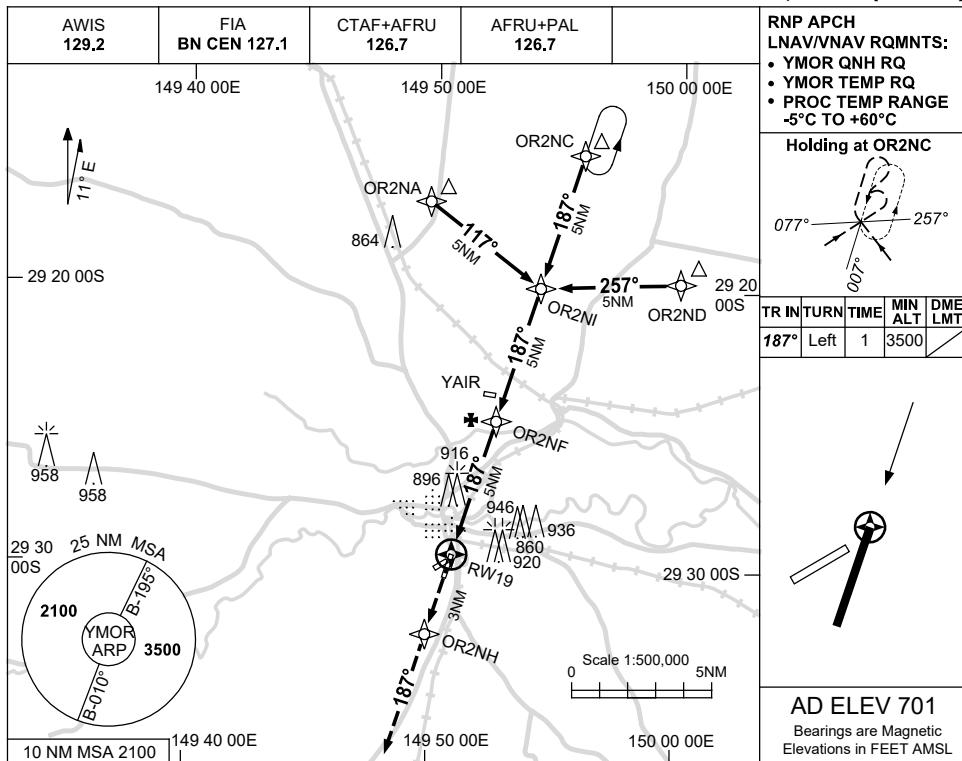
Changes: CAT C CIRCLING, DIST-ALT TABLE.

MORDG01-179

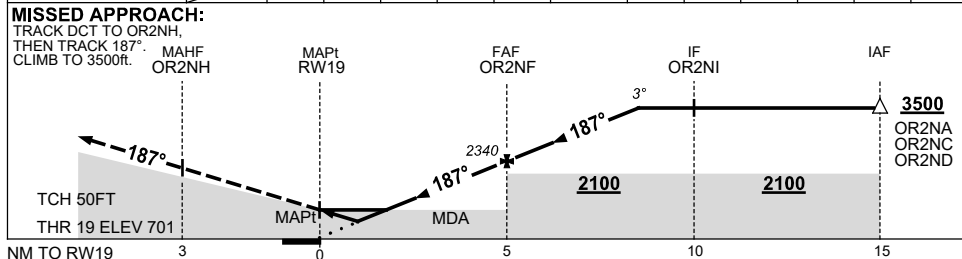
USE QNH

RNP RWY 19
MOREE, NSW (YMOR)

5 SEP 2024



NM TO NEXT WPT	RW19	0.9	1.6	2	3	4	OR2NF	1	2	3	3.6		
ALT (3° APCH PATH)		1050	1270	1390	1710	2020	2340	2660	2980	3300	3500		



NOTES

CATEGORY	A	B	C	D
LNAV/VNAV		1050 (349-1.9)		NOT APPLICABLE
LNAV		1270 (569-3.2)		
CIRCLING	1350 (649-2.4)		1450 (749-4.0)	
ALTERNATE	(1149-4.4)		(1249-6.0)	

1. MAX IAS:
 INITIAL : 210KT.

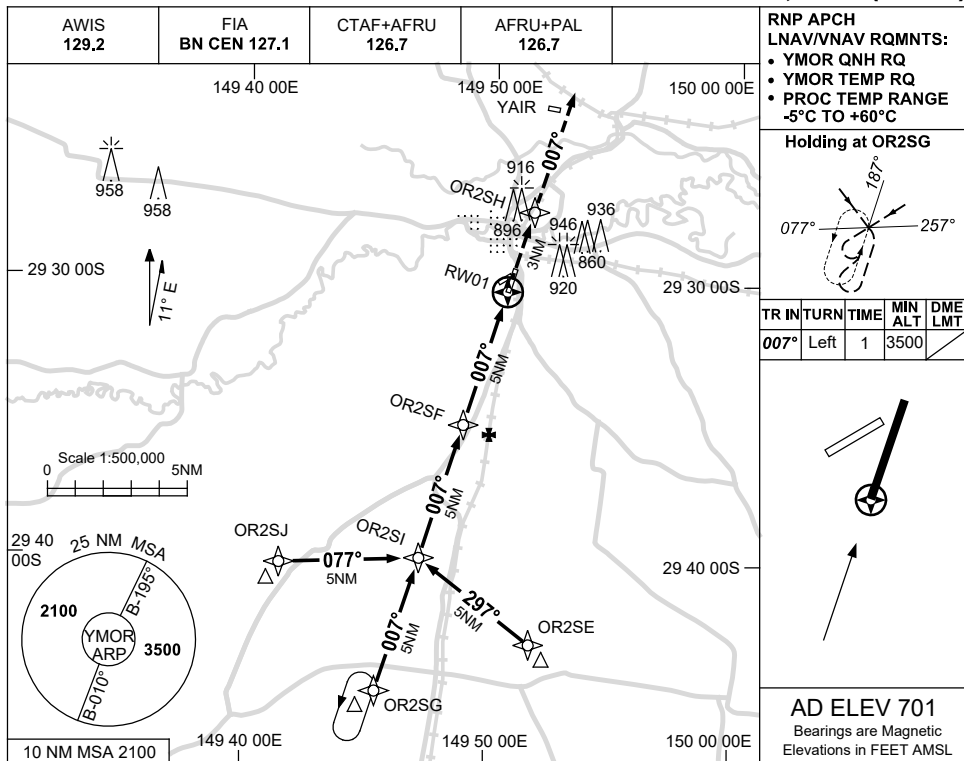
Changes: YAIR AD.

MORGN01-180

USE QNH

RNP RWY 01
MOREE, NSW (YMOR)

5 SEP 2024

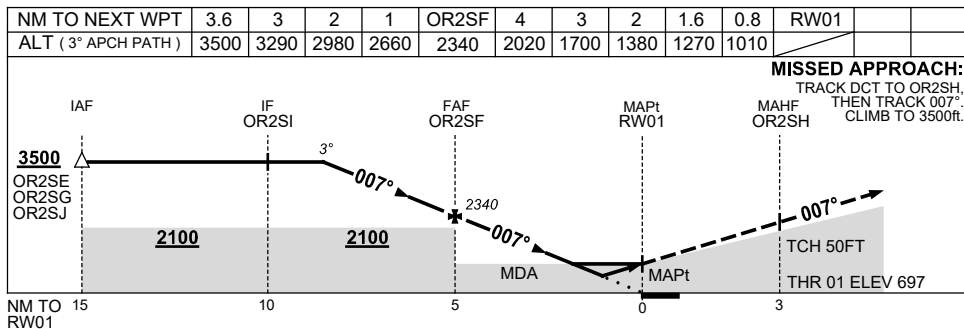


RNP APCH
 LNAV/VNAV RQMNTS:
 • YMOR QNH RQ
 • YMOR TEMP RQ
 • PROC TEMP RANGE
 -5°C TO +60°C

Holding at OR2SG

TR	IN	TURN	TIME	MIN ALT	DME LMT
007°	Left	1	3500		

AD ELEV 701
 Bearings are Magnetic
 Elevations in FEET AMSL



NOTES

CATEGORY	A	B	C	D
LNAV/VNAV		1010 (313-1.7)		NOT APPLICABLE
LNAV		1270 (569-3.2)		
CIRCLING	1350 (649-2.4)		1450 (749-4.0)	
ALTERNATE	(1149-4.4)		(1249-6.0)	

1. MAX IAS:
 INITIAL : 210KT.

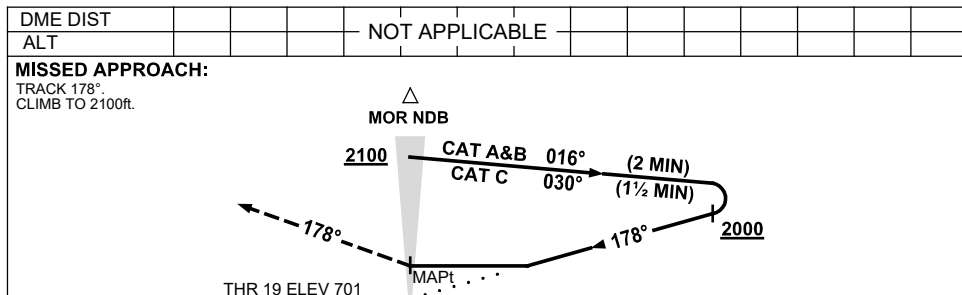
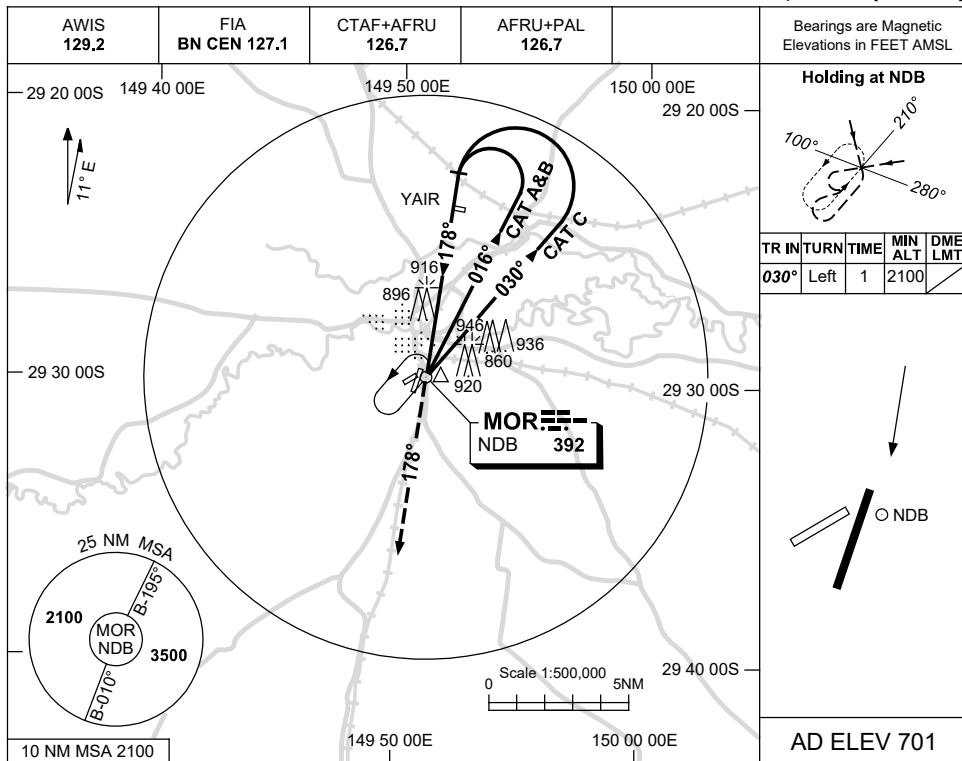
Changes: YAIR AD.

MORGN02-180

USE QNH

NDB RWY 19
MOREE, NSW (YMOR)

5 SEP 2024



NOTES

CATEGORY	A	B	C	D
S-I NDB	1340 (639-3.6)			NOT APPLICABLE
CIRCLING	1350 (649-2.4)	1450 (749-4.0)		
ALTERNATE	(1149-4.4)		(1249-6.0)	

1. MAX IAS:
 INITIAL : 210KT.

Changes: YAIR AD.

MORNB01-180