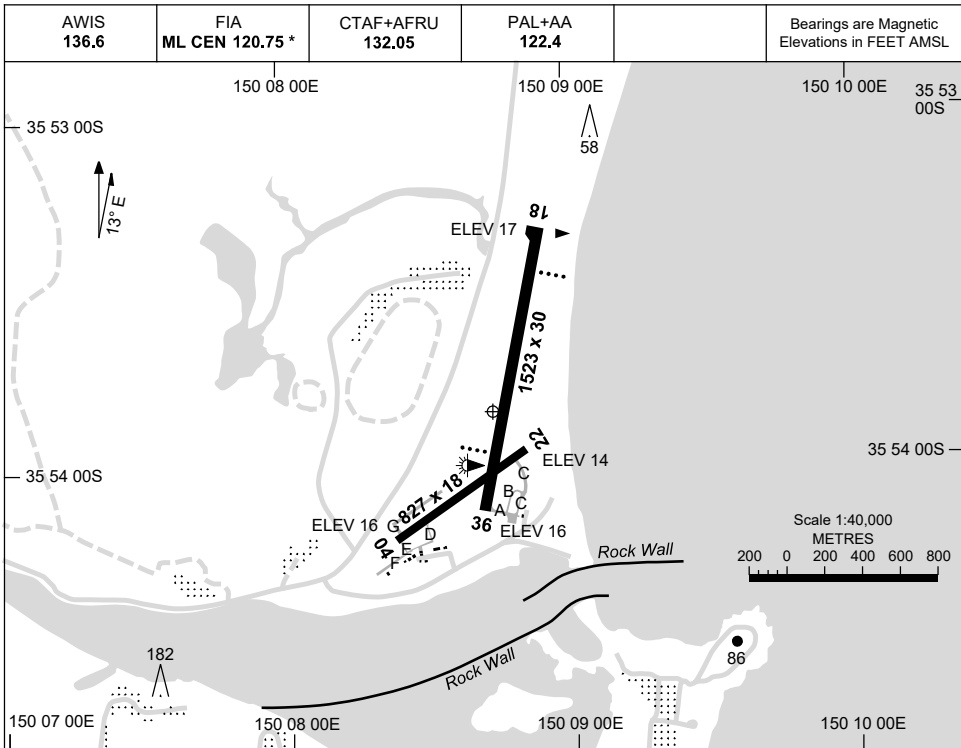


5 SEP 2024

AD ELEV 19  
35 53 51S 150 08 44E

**AERODROME CHART**  
**MORUYA, NSW (YMRY)**



RWY	AERODROME LIGHTING	
		TAXIWAYS : BLUE EDGE ON MAIN TWY BTN RWY 36 THR AND RPT APRON RL : PAL+AA 122.4 , SDBY (20 SEC)
18 <sup>179</sup>	PAPI	3.0° 39.5FT LIRL
359 36	PAPI	3.0° 39.5FT LIRL
04 <sup>043</sup>	NIL	
223 22	NIL	

**NOTES**

1. AWIS ACTIVATED BY 1 SEC TRANSMISSION.
2. \* FIA FREQ 120.75 AVBL ABV 1,500FT.
3. PAL ACTIVATION - MINIMAL DELAY BTN PULSES.

Changes: THR ELEV RWY 18.

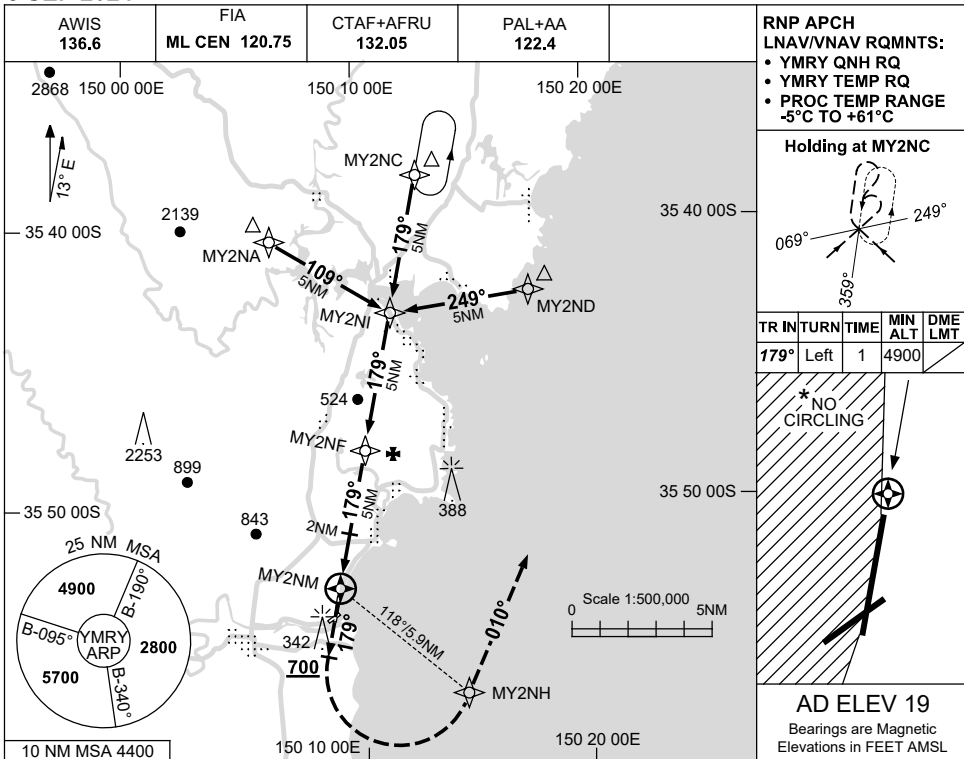
MRYAD01-180



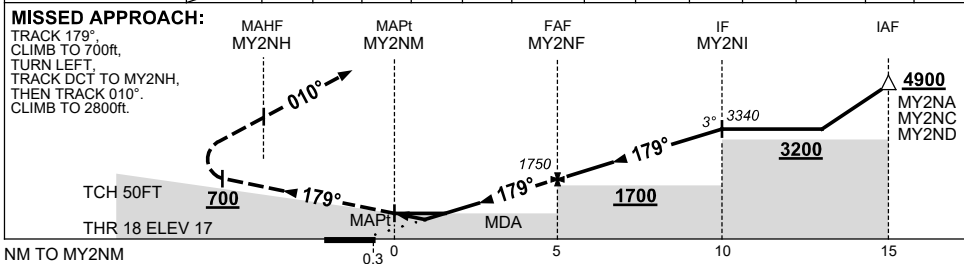
USE QNH

RNP RWY 18  
MORUYA, NSW (YMRV)

5 SEP 2024



NM TO NEXT WPT	MY2NM	1	1.6	2	3	4	MY2NF	1	2	3	4	MY2NI	4.9	
ALT (3° APCH PATH)		470	660	790	1110	1430	1750	2070	2380	2700	3020	3340	4900	



NOTES

CATEGORY	A	B	C	D
LNAV/VNAV		470 (453-2.5)		NOT APPLICABLE
LNAV		660 (641-3.6)		
CIRCLING *	780 (761-2.4)		880 (861-4.0)	
ALTERNATE		(1261-4.4)	(1361-6.0)	

- 1. MAX IAS: INITIAL : 210KT.
- \* 2. NO CIRCLING WEST OF RWY 18 / 36.

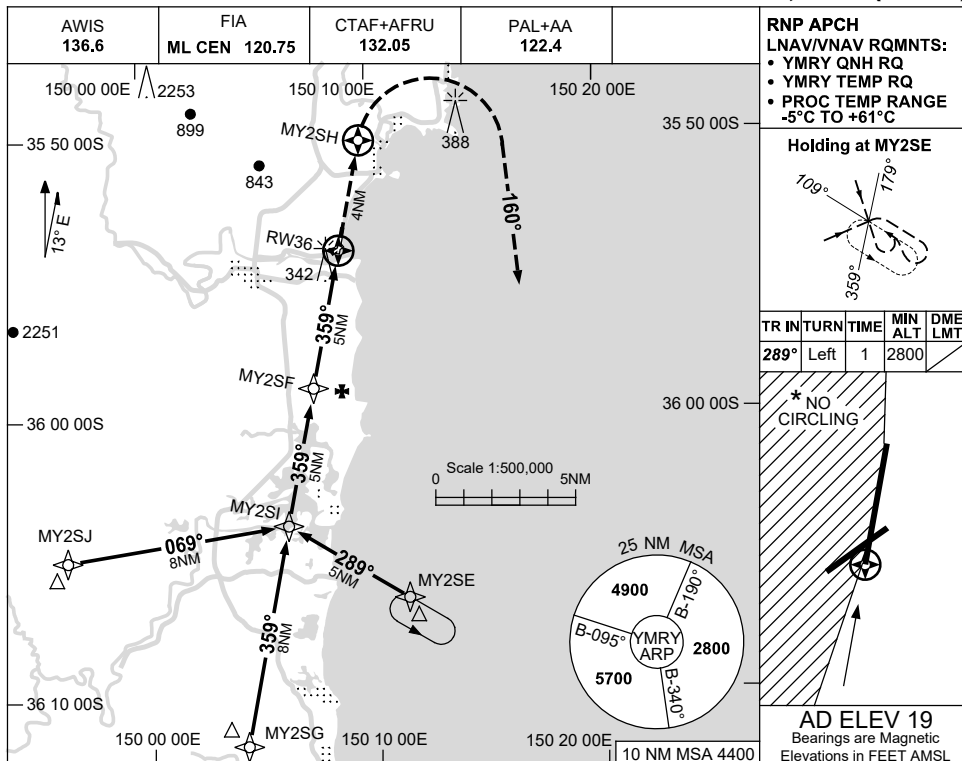
Changes: THR ELEV, HAT, WPT NAMING CONVENTION, Editorial.

MRYGN01-180

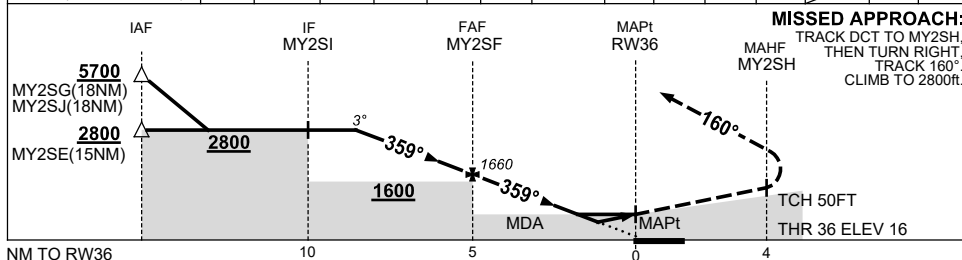
USE QNH

RNP RWY 36  
MORUYA, NSW (YMRY)

5 SEP 2024



NM TO NEXT WPT	7.7	MY2SI	3.6	3	2	1	MY2SF	4	3	2.1	1.5	RW36		
ALT (3° APCH PATH)	5700	3250	2800	2610	2300	1980	1660	1340	1020	730	530			



NOTES

CATEGORY	A	B	C	D
LNAV/VNAV	530 (514-2.9)			
LNAV	730 (711-4.1)			
CIRCLING *	780 (761-2.4)	880 (861-4.0)		NOT APPLICABLE
ALTERNATE	(1261-4.4)		(1361-6.0)	

- 1. MAX IAS: INITIAL : 210KT.
- \* 2. NO CIRCLING WEST OF RWY 18 / 36.

Changes: WPT NAMING CONVENTION, Editorial.

MRYGN02-180