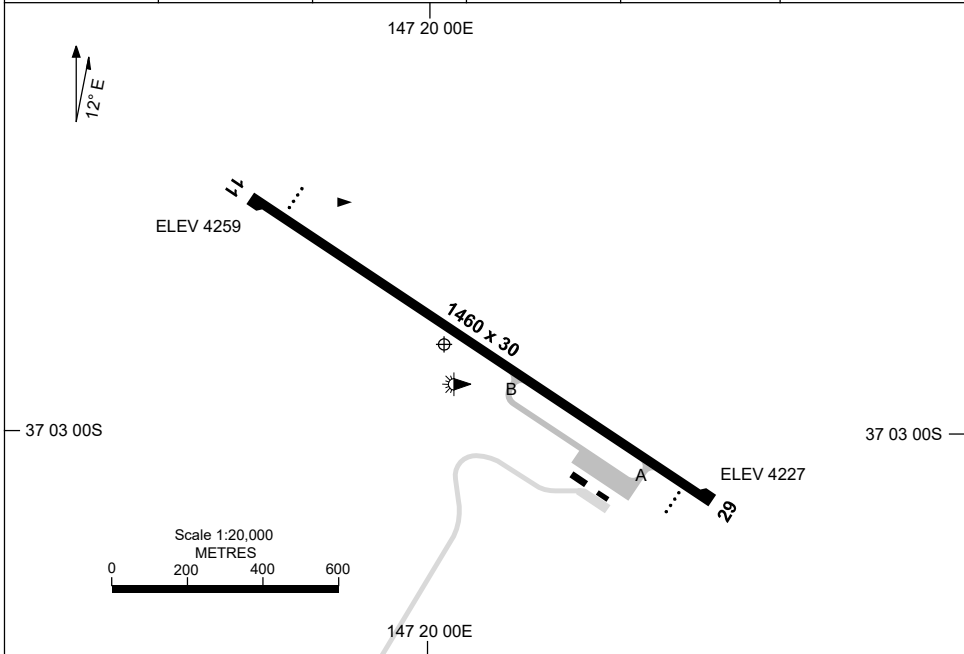


21 MAR 2024

AD ELEV 4260  
37 02 54S 147 20 03E

AERODROME CHART  
**MOUNT HOTHAM, VIC (YHOT)**

AWIS 128.05	FIA ML CEN 125.2	CTAF+AFRU 126.75	APP ESL 123.3		Bearings are Magnetic Elevations in FEET AMSL
----------------	---------------------	---------------------	------------------	--	--



	<b>AERODROME LIGHTING</b>
<b>RWY</b>	TAXIWAY : BLUE EDGE RL : MANUAL , SDBY (15 SEC)
<b>11</b> <sup>111</sup>	PAPI 3.9° 42FT LIRL RTIL (PN)
<sup>291</sup> <b>29</b>	PAPI 3.0° 41FT LIRL RTIL (PN)

**NOTES**

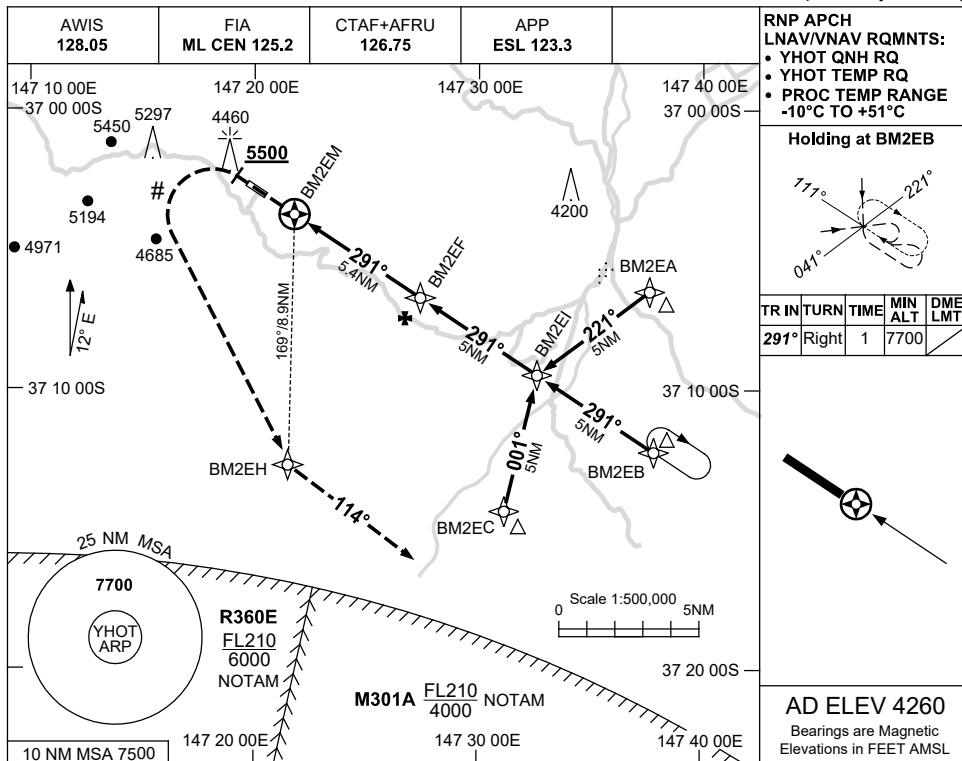
1. AWIS REQUIRES 1 SECOND TRANSMIT PULSE TO ACTIVATE.
2. FIA FREQ 125.2 AVBL 6,500ft.

USE QNH

RNP RWY 29

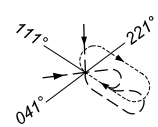
13 JUN 2024

MOUNT HOTHAM, VIC (YHOT)

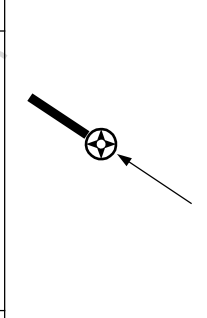


RNP APCH  
LNAV/VNAV RQMNTS:  
• YHOT QNH RQ  
• YHOT TEMP RQ  
• PROC TEMP RANGE  
-10°C TO +51°C

Holding at BM2EB



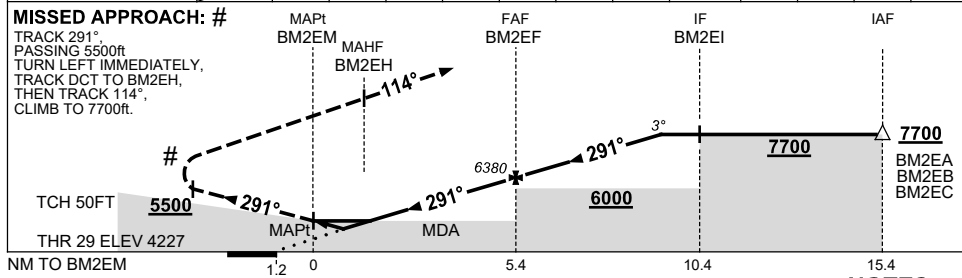
TR IN	TURN	TIME	MIN ALT	DME LMT
291°	Right	1	7700	



AD ELEV 4260

Bearings are Magnetic  
Elevations in FEET AMSL

NM TO NEXT WPT	BM2EM	0.1	0.4	0.7	1	2	3	4	BM2EF	1	2	3	4.1
ALT (3° APCH PATH)		4700	4800	4890	4990	5300	5620	5940	6380	6700	7020	7330	7700



CATEGORY	A	B	C	D
LNAV/VNAV (2.5% MAP)		4890 (663-3.8)		NOT APPLICABLE
LNAV/VNAV # (3.3% MAP)		4700 (473-2.7)		
LNAV (2.5% MAP)		4990 (763-4.4)		
LNAV # (3.3% MAP)		4800 (573-3.3)		
CIRCLING	5450 (1190-2.4)	5880 (1620-4.0)		
ALTERNATE		(1690-4.4)	(2120-6.0)	

- NOTES**
- MAX IAS:  
INITIAL : 210KT.  
MAP TURN : 210KT.
  - MIN MAP GRAD 3.3% TO 5500FT, THEN 2.5%.
  - HOLDING NOT AVBL WHEN M301A ACTIVE.

Changes: MISSED APCH INSTRUCTIONS, WPT NAMING CONVENTION, Editorial.

HOTGN01-179