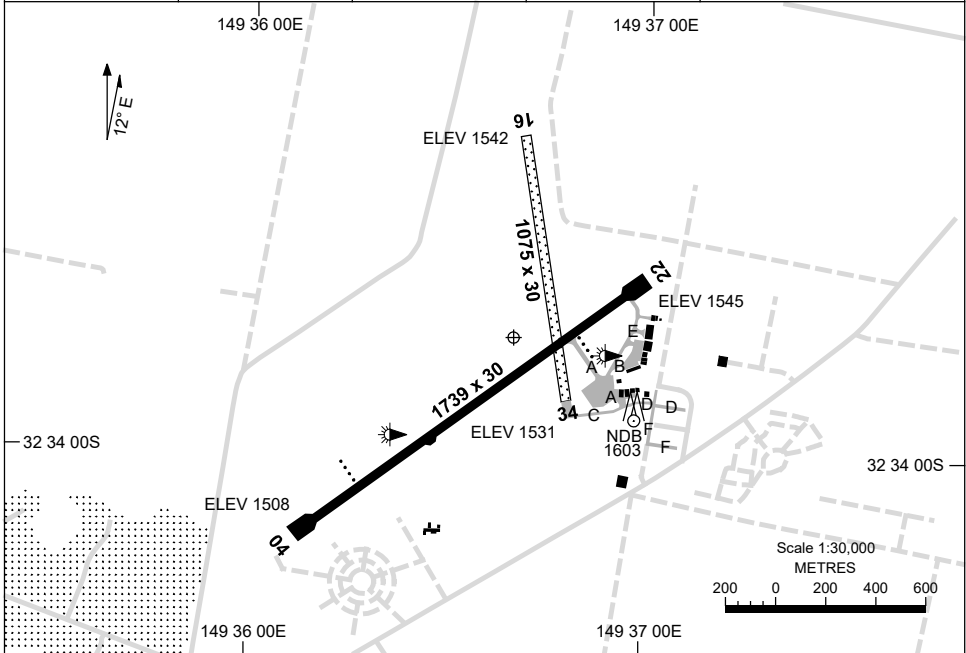


7 SEP 2023

AD ELEV 1545  
32 33 45S 149 36 40E

AERODROME CHART  
**MUDGEES, NSW (YMDG)**

FIA BN CEN 133.05	CTAF 126.7	PAL 122.3		Bearings are Magnetic Elevations in FEET AMSL
----------------------	---------------	--------------	--	--



RWY		AERODROME LIGHTING
		TAXIWAY : BLUE EDGE RL : PAL 122.3 , SDBY (1 MIN)
<b>04</b> <sup>041</sup>		PAPI 3.0° 45FT LIRL
<sup>221</sup> <b>22</b>		PAPI 3.0° 43FT LIRL
<b>16</b> <sup>159</sup>		NIL
<sup>339</sup> <b>34</b>		NIL

**NOTES**

1. AWIS (PHONE) 02 9353 6439.
2. FIA 133.05 AVBL IN CIRCUIT AREA.
3. PAPI RWY 04 MUST NOT BE USED BEYOND CIRCLING AREA.

Changes: NOTES.

MDGAD01-176

13 JUN 2024

FIA BN CEN 133.05	CTAF 126.7	PAL 122.3		Bearings are Magnetic Elevations in FEET AMSL
----------------------	---------------	--------------	--	--

**REFERENCE WAYPOINT MDG NDB**  
AWIS (PHONE) 02 9353 6439

\* NO CIRCLING IN SECTOR S OF RWY 04/22 AND E OF RWY 16/34.

**AD ELEV 1545**

**SECTOR A**

**MISSED APPROACH:**  
TURN AS APPROPRIATE,  
TRACK 150°. CLIMB TO 4800FT.

NM TO MDG NDB	25	15	7	5	3	0												
<b>CIRCLING MINIMA</b>	A,B: 3200-2.4		C: 3520-4.0		D: N/A													
NM TO MDG NDB	6.8	6	5	4	3	2.7	2	1.7										
ALT (3° APCH PATH)	4800	4550	4230	3920	3600	3520	3280	3200										

**SECTOR B**

**MISSED APPROACH:**  
TURN RIGHT,  
TRACK 300°. CLIMB TO 4100FT.

NM TO MDG NDB	25	15	8	5	3	0												
<b>CIRCLING MINIMA</b>	A,B: 3160-2.4		C: 3520-4.0		D: N/A													
NM TO MDG NDB	5.5	5	4	3	2	1.5	1	0.4										
ALT (3° APCH PATH)	4800	4630	4320	4000	3680	3520	3360	3160										

**SECTOR C**

**MISSED APPROACH:**  
TURN AS APPROPRIATE,  
TRACK 300°. CLIMB TO 4100FT.

NM TO MDG NDB	25	15	7	5	3	2	0											
<b>CIRCLING MINIMA</b>	A,B: 3110-2.4		C: 3520-4.0		D: N/A													
NM TO MDG NDB	5.5	5	4	3	2	1.5	1	0.2										
ALT (3° APCH PATH)	4800	4630	4320	4000	3680	3520	3360	3110										

Changes: DIST-ALT TABLE.

MDGDG01-179

# GNSS ARRIVAL PROCEDURES MUDGEES, NSW (YMDG) Page 2

15 AUG 2019

FIA <b>BN CEN 133.05</b>	CTAF <b>126.7</b>	PAL <b>122.3</b>		Bearings are Magnetic Elevations in FEET AMSL
-----------------------------	----------------------	---------------------	--	--

25 NM MSA

4100

MDG NDB

B-170° B-245°

4800

**REFERENCE WAYPOINT MDG NDB**

AWIS (PHONE) 02 9353 6439

\* NO CIRCLING

10 NM MSA 4500

**MDG** **NDB 398**

**AD ELEV 1545**

\* NO CIRCLING IN SECTOR S OF RWY 04/22 AND E OF RWY 16/34.

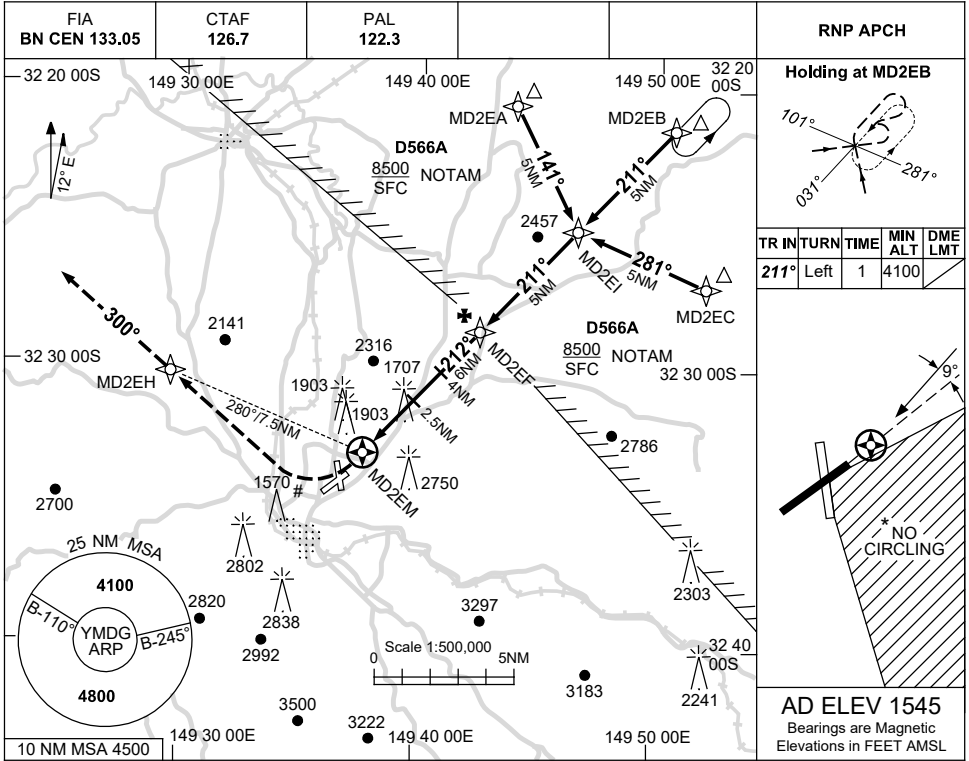
<b>SECTOR D</b>							<b>NDB</b>	<b>4100</b>	<b>MISSED APPROACH:</b> TURN LEFT, TRACK 300°. CLIMB TO 4100FT.
NM TO MDG NDB	25	15	6	5	3	0			
<b>CIRCLING MINIMA</b>				<b>A,B: 3420-2.4</b>	<b>C: 3520-4.0</b>	<b>D: N/A</b>			
NM TO MDG NDB	6	5	4	3	2	1.7			
ALT (3° APCH PATH)	4800	4480	4160	3840	3520	3420			

USE QNH

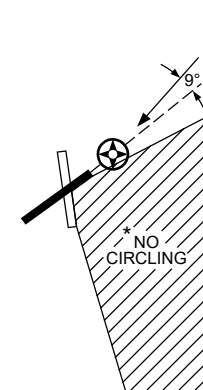
RNP RWY 22

13 JUN 2024

MUDGEE, NSW (YMDG)

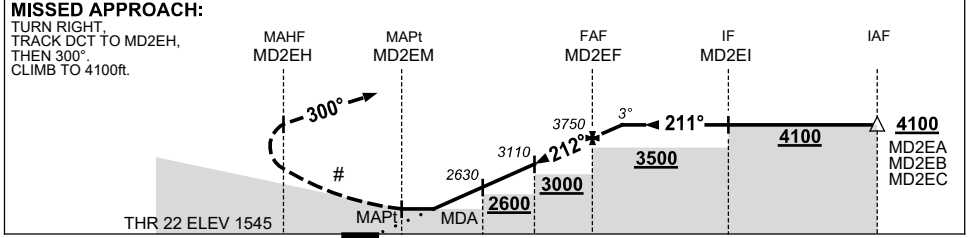


TR	IN	TURN	TIME	MIN ALT	DME LMT
211°	Left	1	4100		



**AD ELEV 1545**  
Bearings are Magnetic  
Elevations in FEET AMSL

NM TO NEXT WPT	MD2EM	1.9	2	3	4	5	MD2EF	1.1				
ALT (3° APCH PATH)		2430	2470	2790	3110	3430	3750	4100				



- NOTES**
- MAX IAS:  
HOLDING : 210KT.  
INITIAL : 210KT.  
# MISSED APCH  
TURN : 190KT.
  - NO CIRCLING IN SECTOR S OF RWY 04/22 AND E OF RWY 16/34.
  - AWIS (PHONE)  
02 9353 6439

CATEGORY	A	B	C	D
LNAV	2430 (885-5.0)			NOT APPLICABLE
CIRCLING *	3110 (1565-2.4)		3520 (1975-4.0)	
ALTERNATE	(2065-4.4)		(2475-6.0)	

Changes: SEGMENT MINIMA, Editorial.

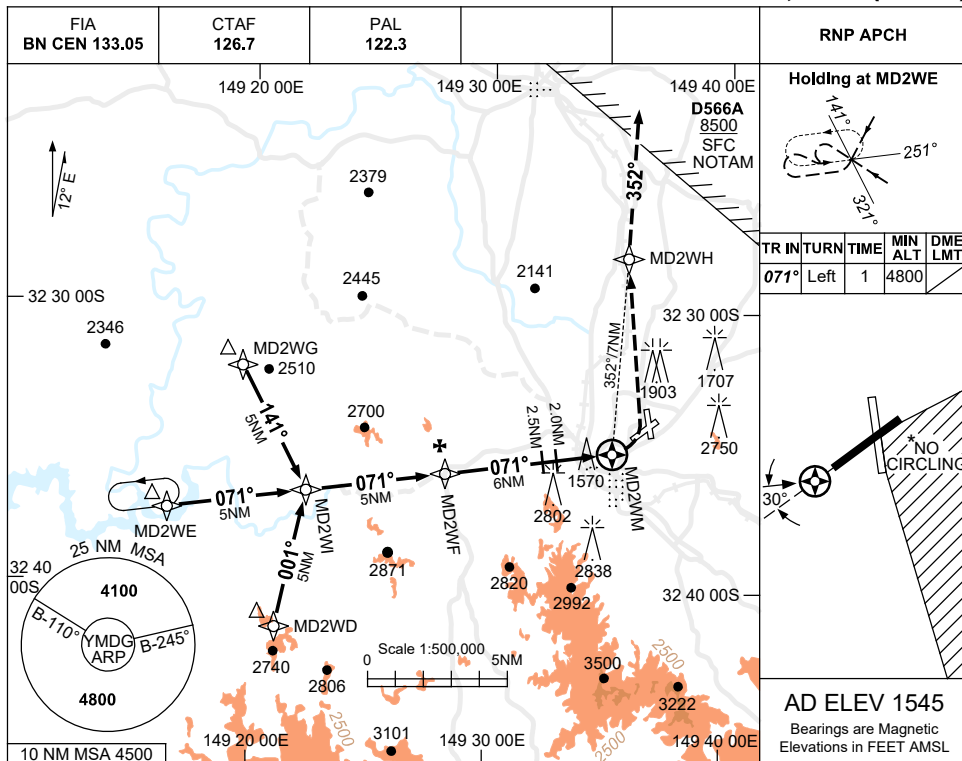
MDGGN01-179

USE QNH

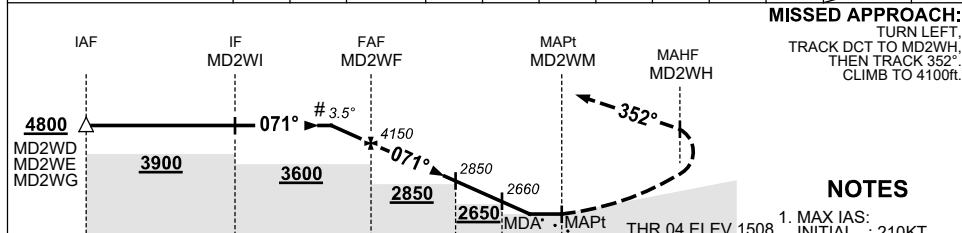
RNP RWY 04

21 MAR 2024

**MUDGEES, NSW (YMDG)**



NM TO NEXT WPT	1.8	1	MD2WF	5	4	3	2.5	2	1.3	0.9	MD2WM
ALT (# 3.5° APCH PATH)	4800	4520	4150	3780	3400	3030	2850	2660	2390	2260	



**NOTES**

- MAX IAS: INITIAL : 210KT. CAT C MAPCH TURN: 160KT.
- NO CIRCLING IN SECTOR S OF RWY 04/22 AND E OF RWY 16/34.
- AWIS (PHONE) 02 9353 6439
- APCH PATH ANGLE DOES NOT COINCIDE WITH PAPI ON SLOPE INDICATION.
- COLOUR: SEE SPEC NOTICES.

CATEGORY	A	B	C	D
LNAV	2390 (882-4.4)		NOT AUTHORISED	NOT APPLICABLE
LNAV (3.3% MAPCH)	2260 (752-3.7)			
CIRCLING*	3110 (1565-2.4)		3520 (1975-4.0)	
ALTERNATE	(2065-4.4)		(2475-6.0)	

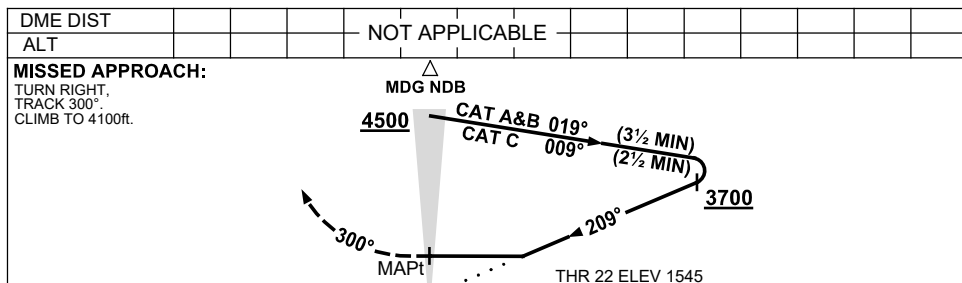
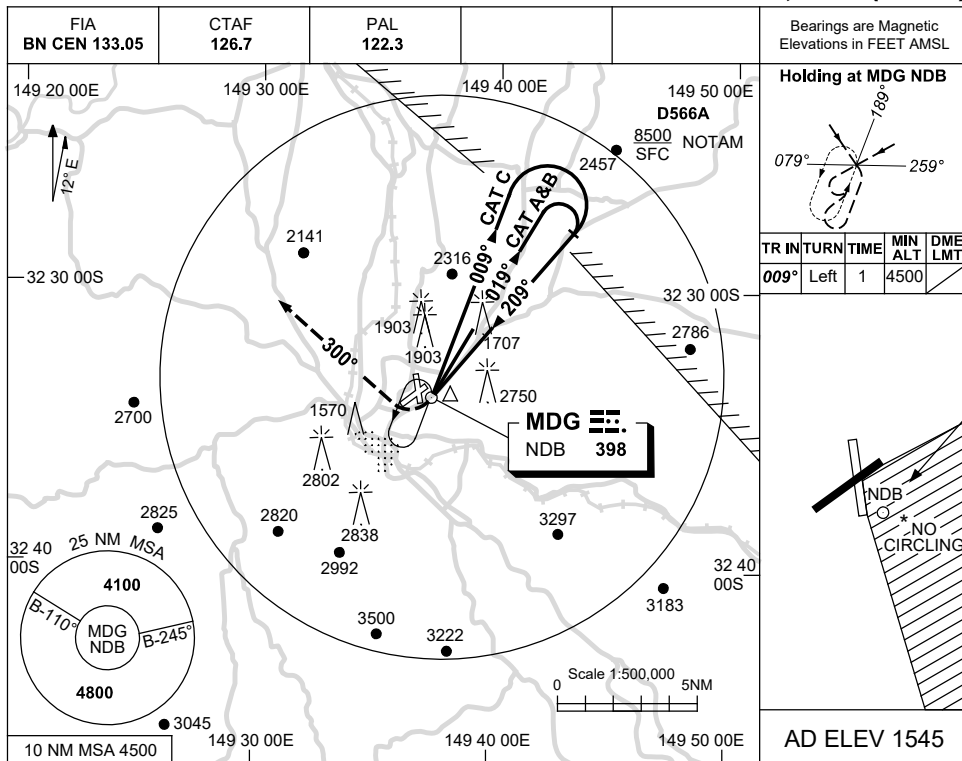
Changes: D566A ADDED, Editorial.

MDGGN02-178

USE QNH

NDB RWY 22  
**MUDGEES, NSW (YMDG)**

13 JUN 2024



**NOTES**

1. MAX IAS:  
 INITIAL :  
 CAT A&B 140KT.  
 CAT C 210KT.
- \* 2. NO CIRCLING IN SECTOR S OF RWY 04/22 AND E OF RWY 16/34.
3. AWIS (PHONE)  
 02 9353 6439

CATEGORY	A	B	C	D
S-I NDB	<b>3110 (1565-5.0)</b>			NOT APPLICABLE
CIRCLING *	<b>3110 (1565-2.4)</b>	<b>3520 (1975-4.0)</b>		
ALTERNATE	<b>(2065-4.4)</b>	<b>(2475-6.0)</b>		

Changes: CIRCLING MINIMA, ALTERNATE MINIMA.

MDGNB01-179