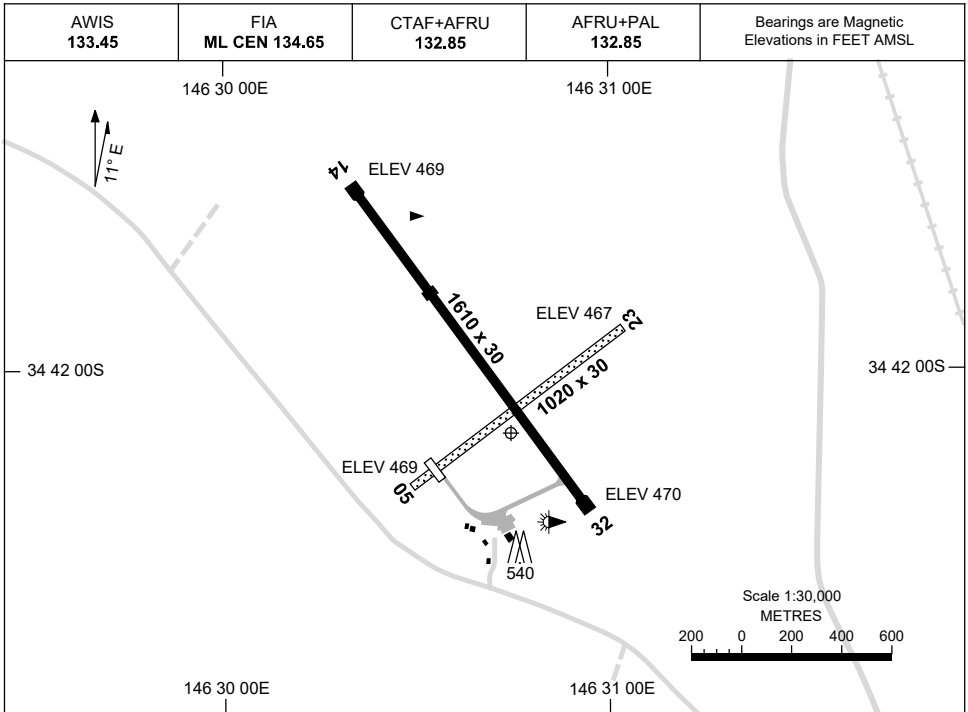


7 SEP 2023

AD ELEV 474
34 42 08S 146 30 44E

AERODROME CHART
NARRANDERA, NSW (YNAR)



	AERODROME LIGHTING
RWY	TAXIWAY : BLUE EDGE BTN RWY 32 THR AND RPT APN ONLY RL : AFRU+PAL 132.85 , SDBY (15 SEC)
14 ¹³³	LIRL
³¹³ 32	LIRL
05 ⁰⁴²	NIL
²²² 23	NIL

NOTES

1. AWIS RQ ONE-SECOND TRANSMIT PULSE TO ACTIVATE.
2. FIA FREQ 134.65 AVBL IN CIRCUIT AREA.
3. SBDY PWR AVBL SUPPLIED BY AD GENERATOR IN THE EVENT OF MAINS PWR FAILURE.

Changes: AD LIGHTING, NOTES, Editorial.

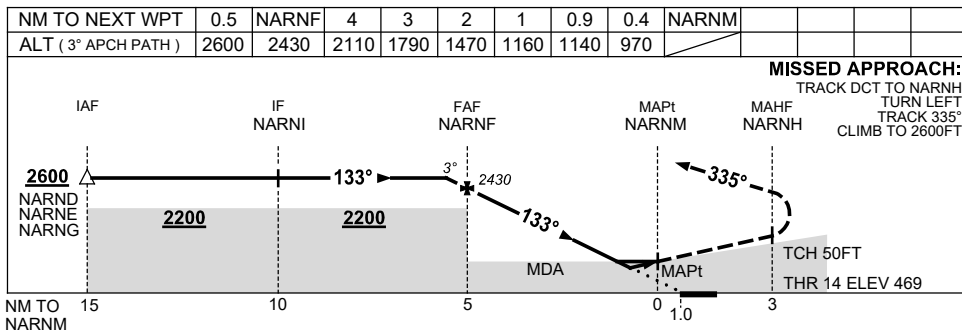
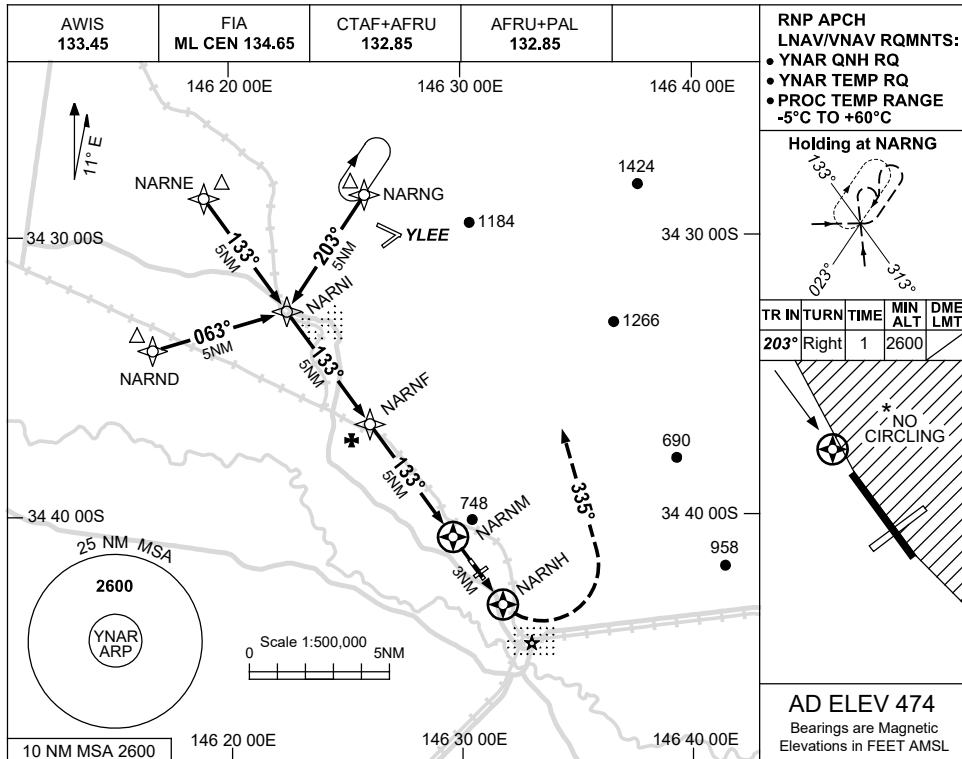
NARAD01-176

USE QNH

RNP RWY 14

7 SEP 2023

NARRANDERA, NSW (YNAR)



NOTES

1. MAX IAS:
INITIAL : 230KT.
- * 2. NO CIRCLING EAST
OF RWY 14/32.

CATEGORY	A	B	C	D
LNAV/VNAV		970 (501-2.8)		NOT APPLICABLE
LNAV		1140 (666-3.8)		
CIRCLING *	1200 (726-2.4)		1340 (866-4.0)	
ALTERNATE	(1226-4.4)		(1366-6.0)	

Changes: MODEL ACFT REMOVED.

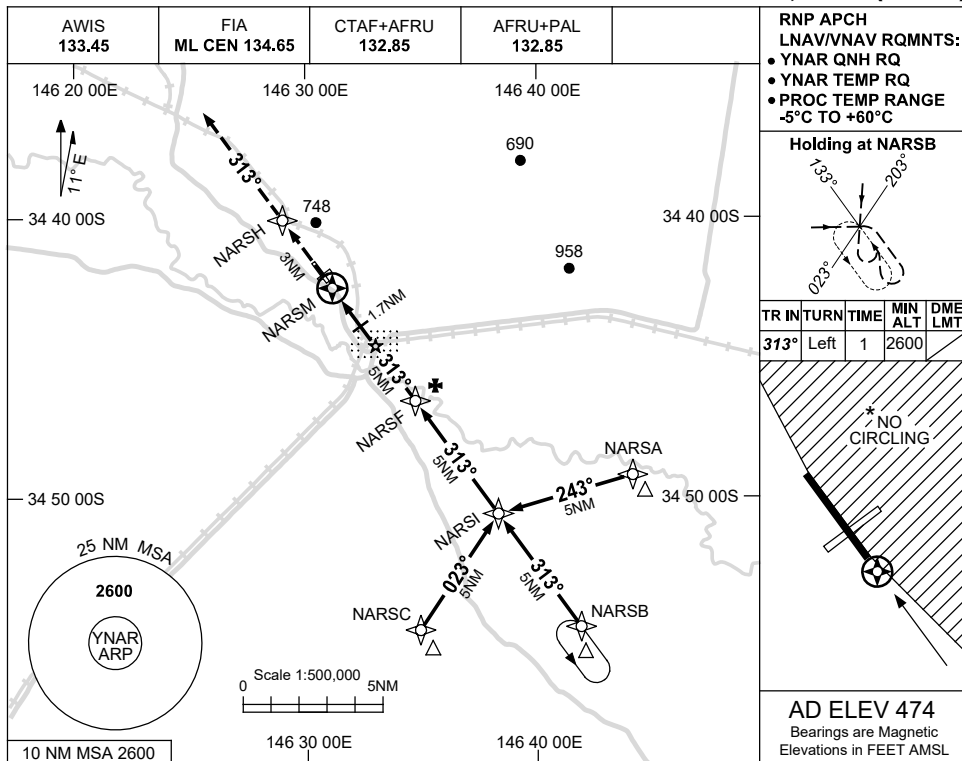
NARGN01-176

USE QNH

RNP RWY 32

15 JUN 2023

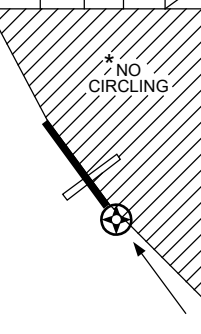
NARRANDERA, NSW (YNAR)



RNP APCH
LNAV/VNAV RQMNTS:
• YNAR QNH RQ
• YNAR TEMP RQ
• PROC TEMP RANGE
-5°C TO +60°C

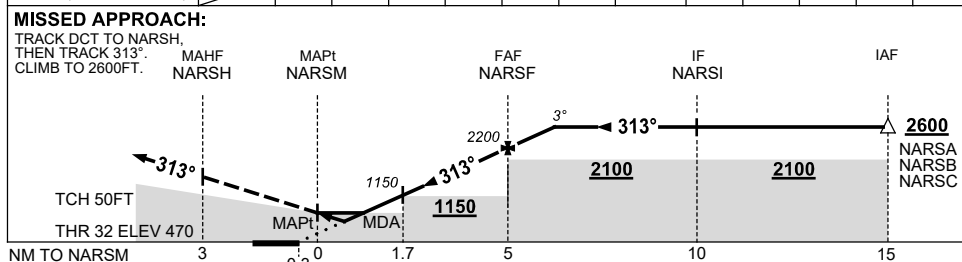
Holding at NARSB

TR	IN	TURN	TIME	MIN ALT	DME LMT
313°	Left	1	2600		



AD ELEV 474
Bearings are Magnetic
Elevations in FEET AMSL

NM TO NEXT WPT	NARSM	0.8	1.4	1.7	2	3	4	NARSF	1	1.3		
ALT (3° APCH PATH)		850	1060	1150	1240	1560	1880	2200	2520	2600		



NOTES

- MAX IAS: INITIAL : 230KT.
- NO CIRCLING EAST OF RWY 14/32.

CATEGORY	A	B	C	D
LNAV/VNAV		850 (380-2.1)		NOT APPLICABLE
LNAV		1060 (586-3.3)		
CIRCLING *	1200 (726-2.4)	1340 (866-4.0)		
ALTERNATE	(1226-4.4)	(1366-6.0)		

Changes: CHART TITLE, PBN SPECIFICATION BOX, Editorial.

NARGN02-175