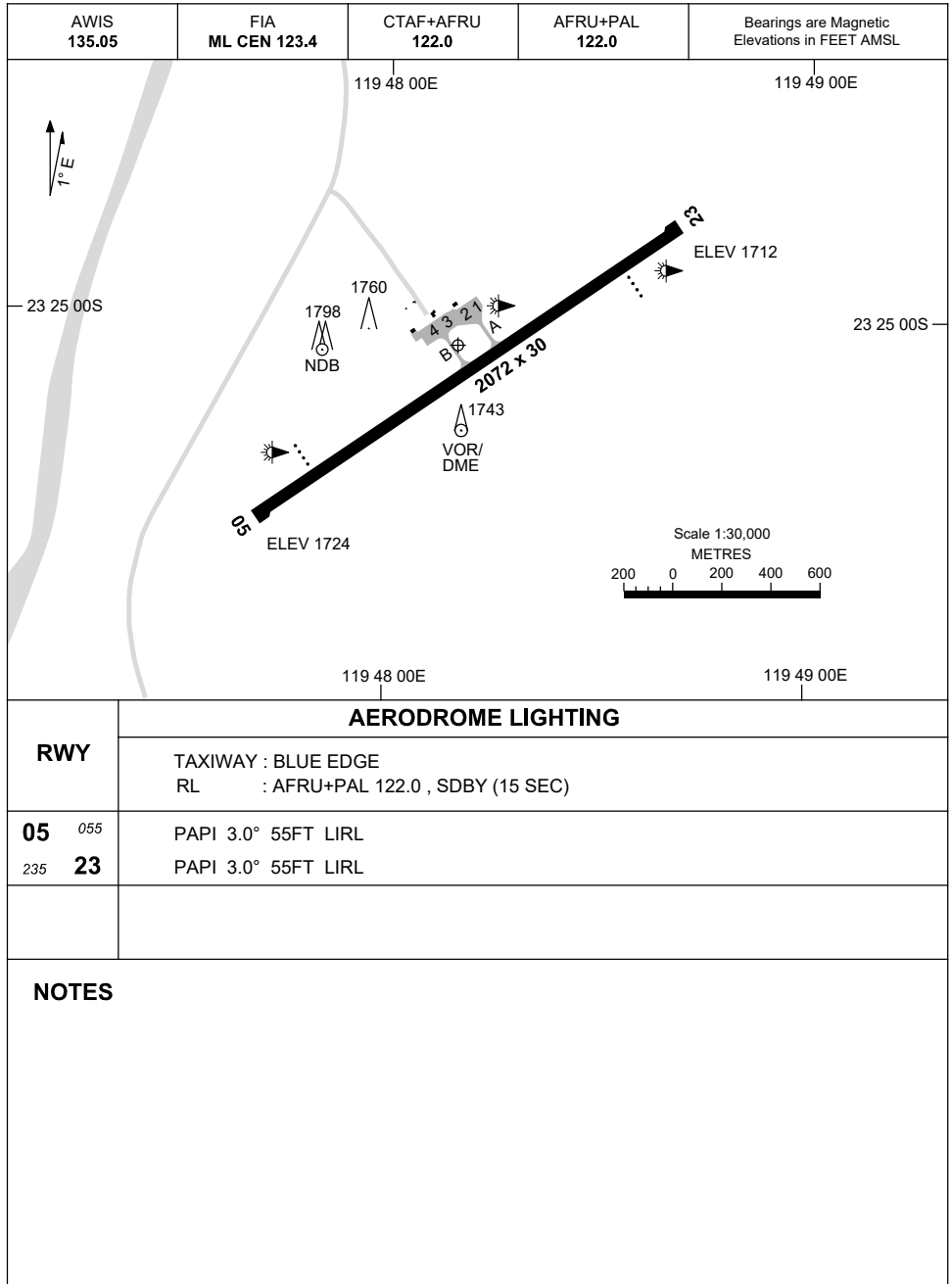


28 NOV 2024

AD ELEV 1724
23 25 04S 119 48 10E

AERODROME CHART
NEWMAN, WA (YNWN)



	AERODROME LIGHTING
RWY	TAXIWAY : BLUE EDGE RL : AFRU+PAL 122.0 , SDBY (15 SEC)
05 <small>055</small>	PAPI 3.0° 55FT LIRL
<small>235</small> 23	PAPI 3.0° 55FT LIRL

NOTES

Changes: SDBY SWITCHOVER TIME.

NWNAD01-181

DME or GNSS ARRIVAL PROCEDURES NEWMAN, WA (YNWN) Page 1

5 NOV 2020

AWIS 135.05	FIA ML CEN 123.4	CTAF+AFRU 122.0	AFRU+PAL 122.0	Bearings are Magnetic Elevations in FEET AMSL
----------------	---------------------	--------------------	-------------------	--

25 NM MSA
4600
R-240°
B-060°
3800
NWN VOR or NDB
R-030°
B-210°

**DME USING NWN DME
REFERENCE WAYPOINT NWN VOR**

NWN NDB 233

NWN VOR/DME 117.2

AD ELEV 1724

10 NM MSA 3900

PBO TO NWN	△	<p style="text-align: right;">VOR or NDB</p>	MISSED APPROACH:
			TRACK 096°. CLIMB TO 3800FT.
NM TO NWN VOR	25 15 9 5 2 0		
CIRCLING MINIMA		A,B: 2500-2.4 C: 2730-4.0 D: 2860-5.0	
NM TO NWN VOR	7.7 7 6 5 4 3 2.2 2 1.8 1.1		
ALT (3° APCH PATH)	4600 4390 4070 3750 3430 3110 2860 2800 2730 2500		

BORAH TO NWN	△	<p style="text-align: right;">VOR or NDB</p>	MISSED APPROACH:
			TRACK 158°. CLIMB TO 3800FT.
NM TO NWN VOR	25 15 10 5 2 0		
CIRCLING MINIMA		A,B: 2500-2.4 C: 2730-4.0 D: 2860-5.0	
NM TO NWN VOR	7.7 7 6 5 4 3 2.2 2 1.8 1.1		
ALT (3° APCH PATH)	4600 4390 4070 3750 3430 3110 2860 2800 2730 2500		

DAMPU TO NWN	△	<p style="text-align: right;">VOR or NDB</p>	MISSED APPROACH:
			TRACK 212°. CLIMB TO 4600FT.
NM TO NWN VOR	25 15 10 6 5 4 0		
CIRCLING MINIMA		A,B: 2500-2.4 C: 2730-4.0 D: 2860-5.0	
NM TO NWN VOR	8.2 8 7 6 5 4.3 4 3.9 3.1		
ALT (3° APCH PATH)	4100 4050 3730 3410 3090 2860 2760 2730 2500		

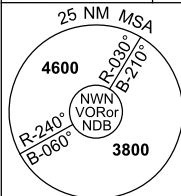
Changes: Editorial.

NWWDG01-165

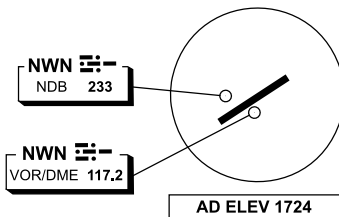
DME or GNSS ARRIVAL PROCEDURES NEWMAN, WA (YNWN) Page 2

13 NOV 2014

AWIS 135.05	FIA ML CEN 123.4	CTAF+AFRU 122.0	AFRU+PAL 122.0		Bearings are Magnetic Elevations in FEET AMSL
----------------	---------------------	--------------------	-------------------	--	--



DME USING NWN DME REFERENCE WAYPOINT NWN VOR



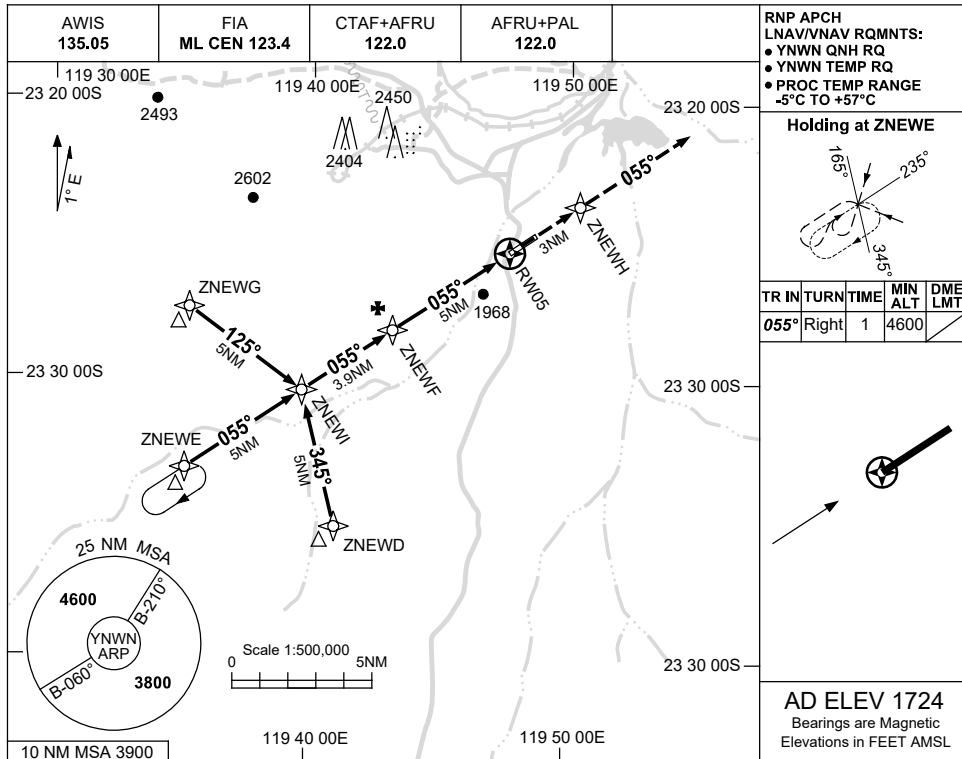
10 NM MSA 3900

ALL OTHER ROUTES TO NWN VOR or NDB	△									MISSED APPROACH: CLIMB ON TRACK TO 4600FT.				
	NM FM VOR	25	15	9	5	2	0							
CIRCLING MINIMA			A,B: 2810-2.4		C: 2810-4.0		D: 2860-5.0							
NM FM VOR	6.4	6	5	4	3	2	1	0.9	0.7					
ALT (3° APCH PATH)	4600	4470	4150	3830	3510	3200	2880	2860	2810					

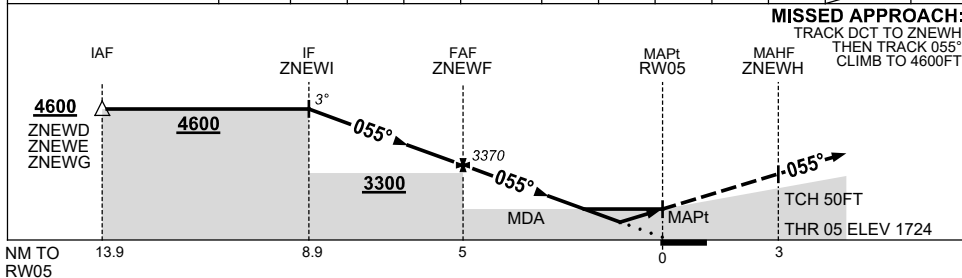
USE QNH

RNP RWY 05
NEWMAN, WA (YNWN)

30 NOV 2023



NM TO NEXT WPT	ZNEWI	3	2	1	ZNEWF	4	3	2	1.7	1.3	RWY05
ALT (3° APCH PATH)	4600	4320	4000	3680	3370	3050	2730	2410	2330	2180	



NOTES

CATEGORY	A	B	C	D
LNAV/VNAV		2180 (456-2.6)		
LNAV		2330 (606-3.4)		
CIRCLING	2500 (776-2.4)		2730 (1006-4.0)	2860 (1136-5.0)
ALTERNATE	(1276-4.4)		(1506-6.0)	(1636-7.0)

1. MAX IAS:
 INITIAL : 230KT.

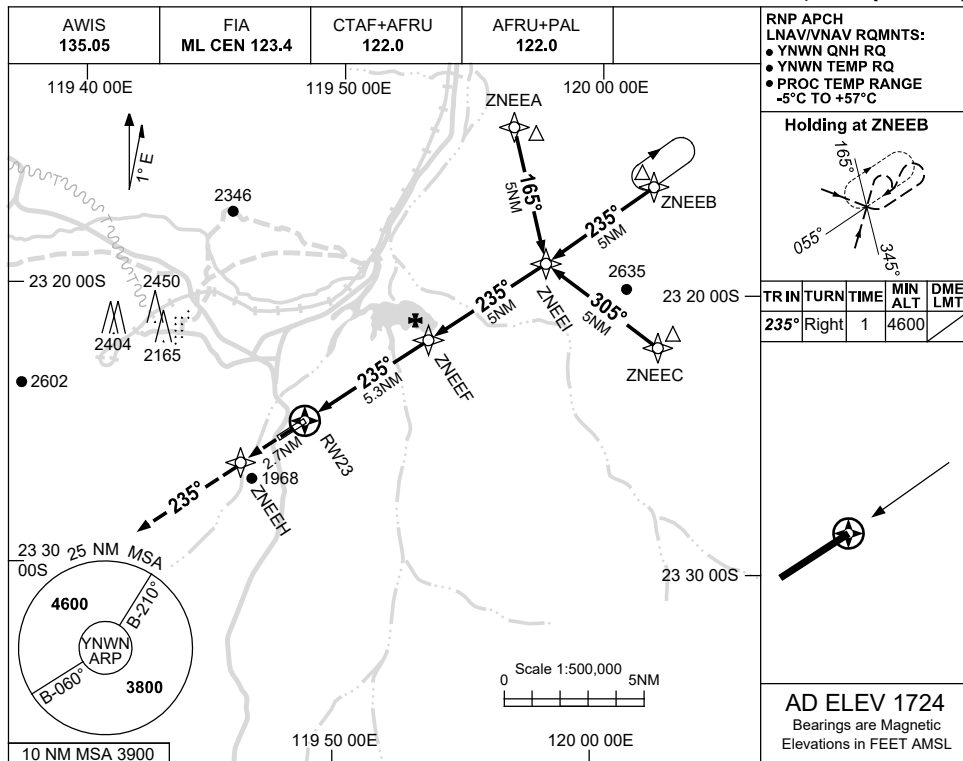
Changes: CHART TITLE, PBN SPECIFICATION BOX, Editorial.

NWNGN01-177

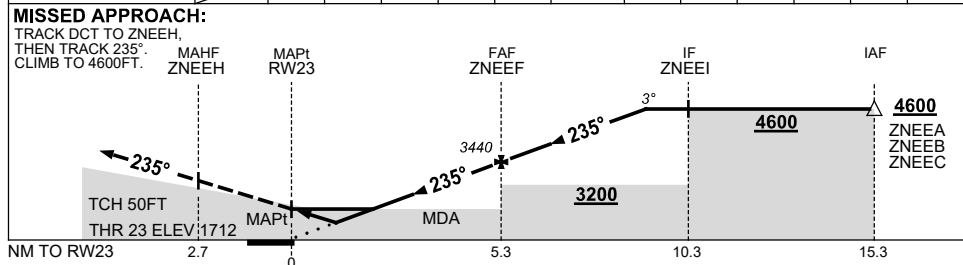
USE QNH

RNP RWY 23
NEWMAN, WA (YNWN)

30 NOV 2023



NM TO NEXT WPT	RW23	1	1.6	2	3	4	ZNEEF	1	2	3	3.6		
ALT (3° APCH PATH)		2070	2260	2400	2720	3040	3440	3760	4080	4390	4600		



NOTES

CATEGORY	A	B	C	D
LNAV/VNAV		2070 (358-2.0)		
LNAV		2260 (548-3.1)		
CIRCLING	2500 (776-2.4)		2730 (1006-4.0)	2860 (1136-5.0)
ALTERNATE	(1276-4.4)		(1506-6.0)	(1636-7.0)

1. MAX IAS:
 INITIAL : 230KT.

Changes: CHART TITLE, PBN SPECIFICATION BOX, Editorial.

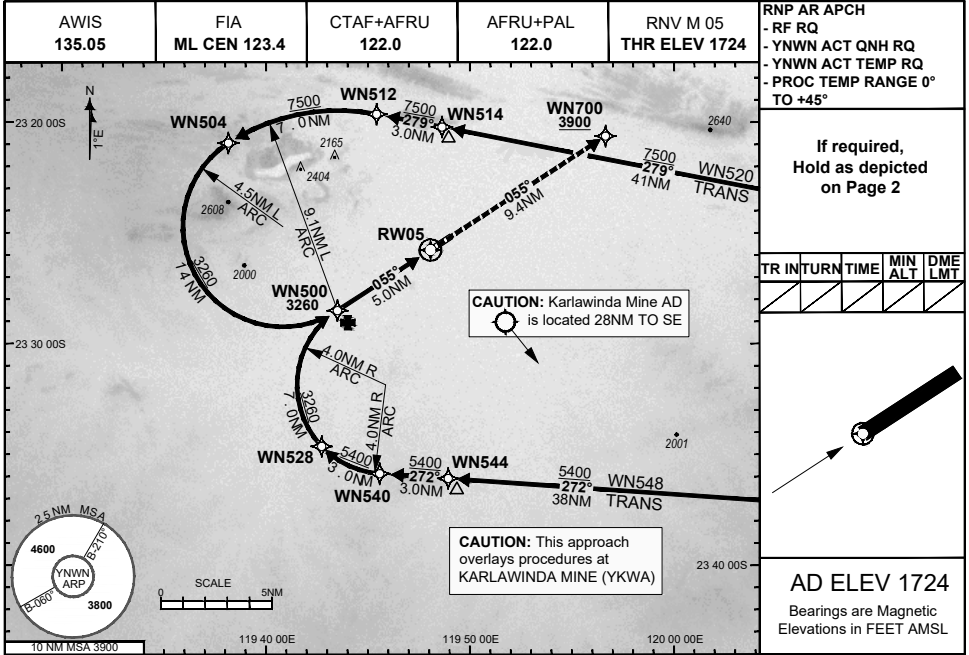
NWNGN02-177

FOR CASA APPROVED OPERATORS ONLY

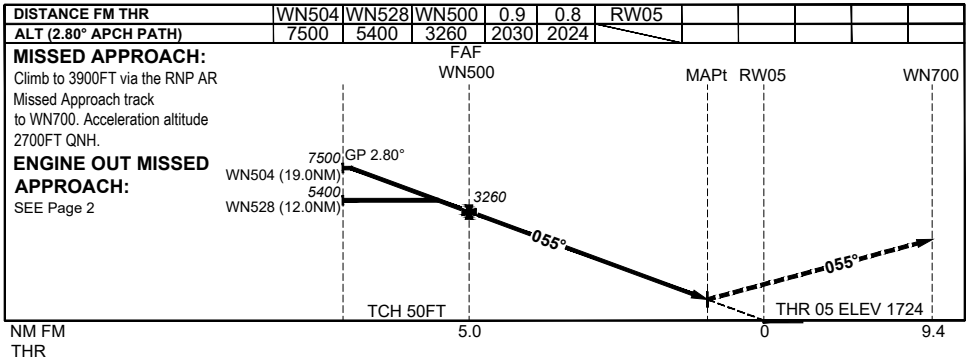
28 NOV 2024

USE QNH

NEWMAN, WA (YNNW)



RNP AR APCH				
- RF RQ				
- YNNW ACT QNH RQ				
- YNNW ACT TEMP RQ				
- PROC TEMP RANGE 0° TO +45°				
If required, Hold as depicted on Page 2				
TR	INTURN	TIME	MIN ALT	DME LMT
AD ELEV 1724				
Bearings are Magnetic Elevations in FEET AMSL				



NOTES

- 1) Lateral transition to MAP must not be initiated prior to DA(H) PSN.
- 2) PAPI and glidepath not coincident.
- 3) Minimum MAP gradient (All Engines) 3.3% to 3900FT.
- 4) CAUTION: This approach overlays procedures at KARLAWINDA MINE (YKWA).

CATEGORY	A	B	C	D
RNP (0.10)	NOT APPLICABLE		DA(H) 2024' (300)-1.6	
RNP (0.30)	NOT APPLICABLE		DA(H) 2030' (306)-1.6	
CIRCLING	NOT AUTHORISED			

202407301640 General Electric Company Proprietary & Confidential Information

Changes: Revised frequency box, Editorial.

NWNGN03-181

DO NOT USE FOR NAVIGATION

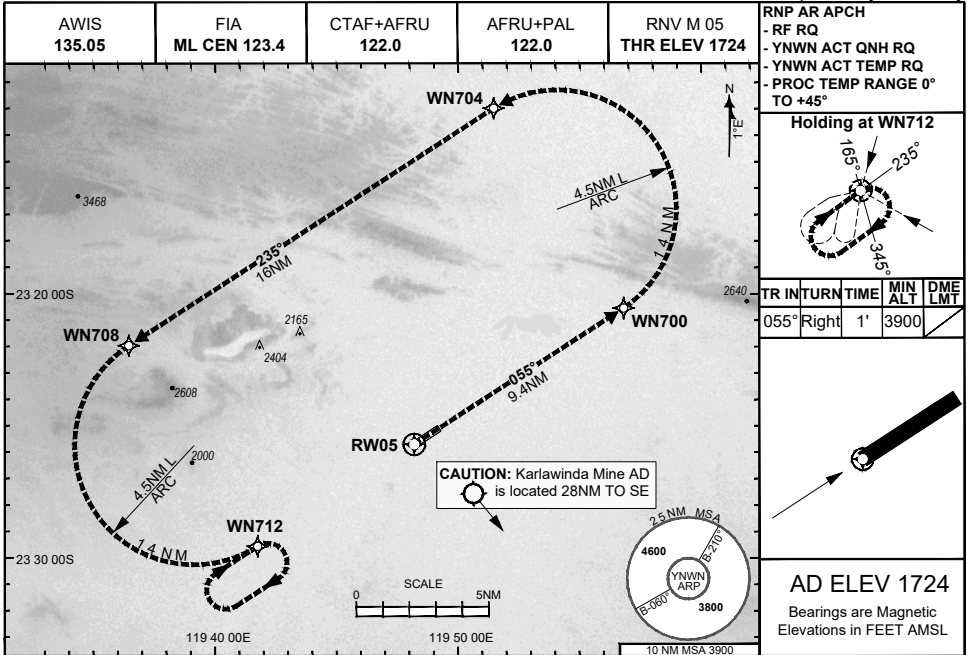
Prepared by GE Aerospace



28 NOV 2024

USE QNH

NEWMAN, WA (YNWN)



ENGINE OUT MISSED APPROACH:

Track via the RNP AR Engine Out Missed Approach track to WN712 and hold as published.

Acceleration altitude 2700FT QNH (1000FT AGL).
Climb to 3900FT.

DO NOT USE FOR NAVIGATION

Prepared by GE Aerospace

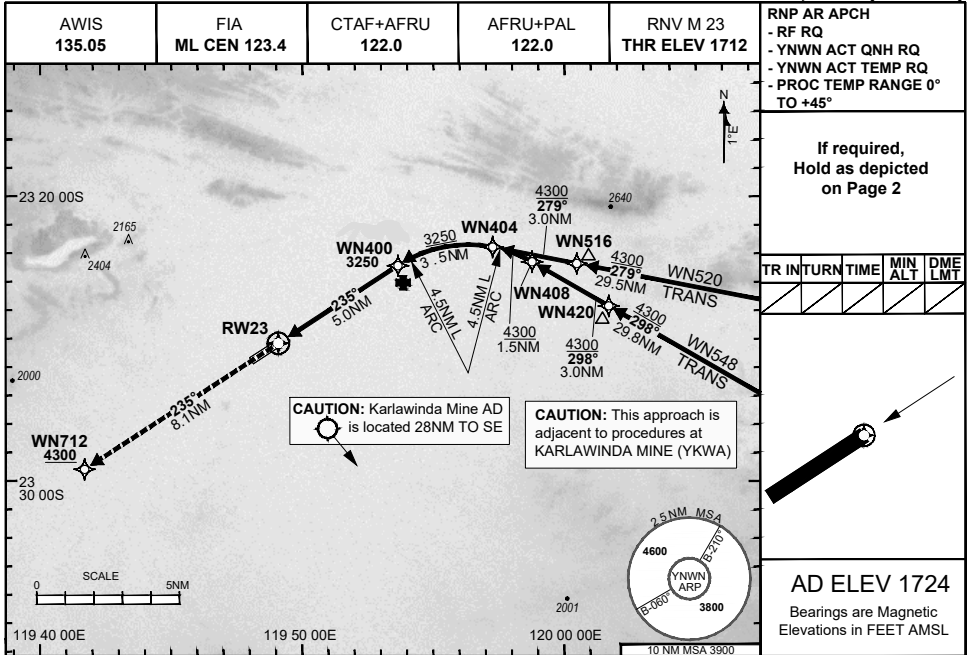


**FOR CASA APPROVED
OPERATORS ONLY**

28 NOV 2024

USE QNH

NEWMAN, WA (YNWN)



DISTANCE FM THR	RW23	0.8	WN400	WN404	WN408	WN516			
ALT (2.80° APCH PATH)	2006	3250	4300	4730	4880				

MISSED APPROACH:
Climb to 4300FT via the RNP AR Missed Approach track to WN712. Acceleration altitude 2700FT QNH.

ENGINE OUT MISSED APPROACH:
SEE Page 2

NM FM THR 8.1 0 5.0 8.5

NOTES

- 1) Lateral transition to MAPt must not be initiated prior to DA(H) PSN.
- 2) PAPI and glidepath not coincident.
- 3) Minimum MAP gradient (All Engines) 4.6% to 4300FT.
- 4) CAUTION: This approach is adjacent to procedures at KARLAWINDA MINE (YKWA).

CATEGORY	A	B	C	D
RNP (0.30)	NOT APPLICABLE		DA(H) 2006' (294)-1.6	
CIRCLING	NOT AUTHORISED			

202407301648 General Electric Company Proprietary & Confidential Information

Changes: Revised frequency box, Editorial.

NWNGN05-181

DO NOT USE FOR NAVIGATION

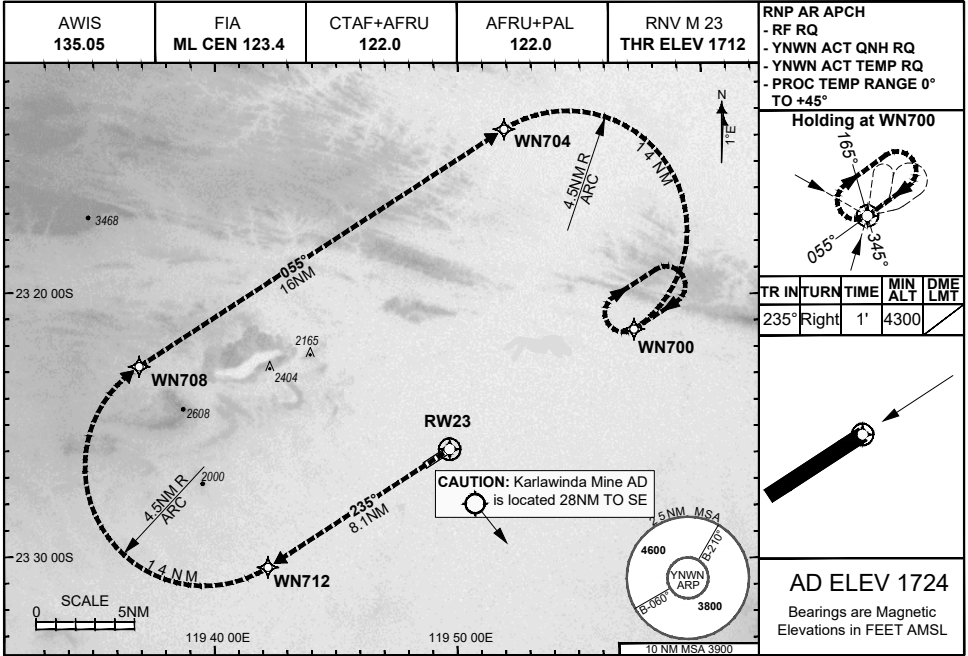
Prepared by GE Aerospace



28 NOV 2024

USE QNH

NEWMAN, WA (YNWN)



ENGINE OUT MISSED APPROACH:

Track via the RNP AR Engine Out Missed Approach track to WN700 and hold as published.

Acceleration altitude 2700FT QNH (1000FT AGL).
Climb to 4300FT.

DO NOT USE FOR NAVIGATION

Prepared by GE Aerospace

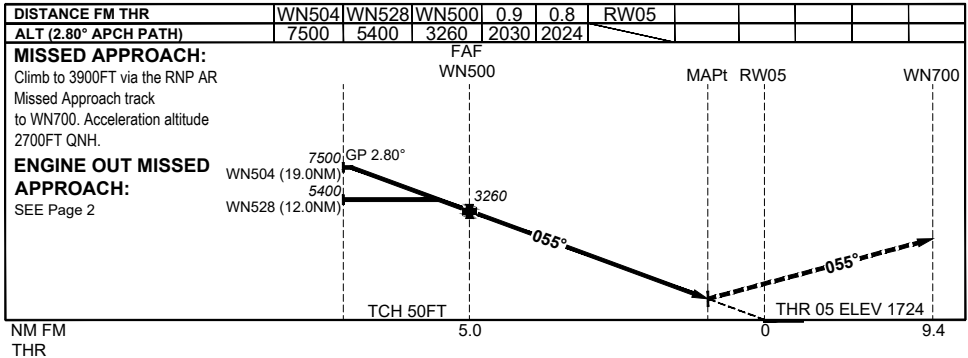
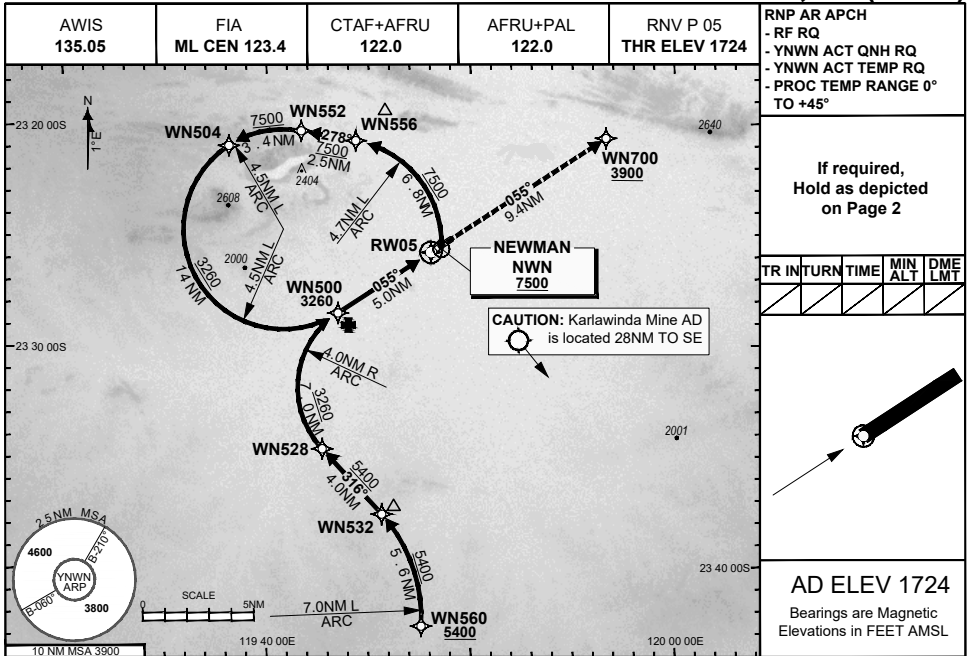


**FOR CASA APPROVED
OPERATORS ONLY**

28 NOV 2024

USE QNH

NEWMAN, WA (YNWN)



NOTES

CATEGORY	A	B	C	D
RNP (0.10)	NOT APPLICABLE		DA(H) 2024' (300)-1.6	
RNP (0.30)	NOT APPLICABLE		DA(H) 2030' (306)-1.6	
CIRCLING	NOT AUTHORISED			

- 1) Lateral transition to MAP must not be initiated prior to DA(H) PSN.
- 2) PAPI and glidepath not coincident.
- 3) Minimum MAP gradient (All Engines) 3.3% to 3900FT.

202407301650 General Electric Company Proprietary & Confidential Information

Changes: Revised frequency box, Editorial.

NWNGN07-181

DO NOT USE FOR NAVIGATION

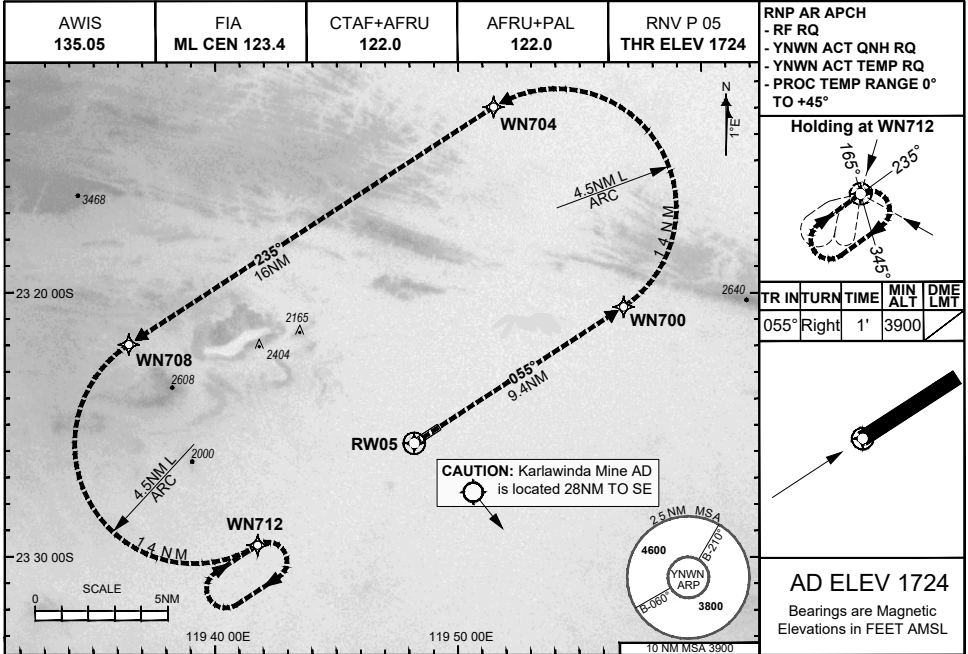
Prepared by GE Aerospace



**FOR CASA APPROVED
OPERATORS ONLY
USE QNH**

NEWMAN, WA (YNWN)

28 NOV 2024



ENGINE OUT MISSED APPROACH:

Track via the RNP AR Engine Out Missed Approach track to WN712 and hold as published.

Acceleration altitude 2700FT QNH (1000FT AGL).
Climb to 3900FT.

DO NOT USE FOR NAVIGATION

Prepared by GE Aerospace

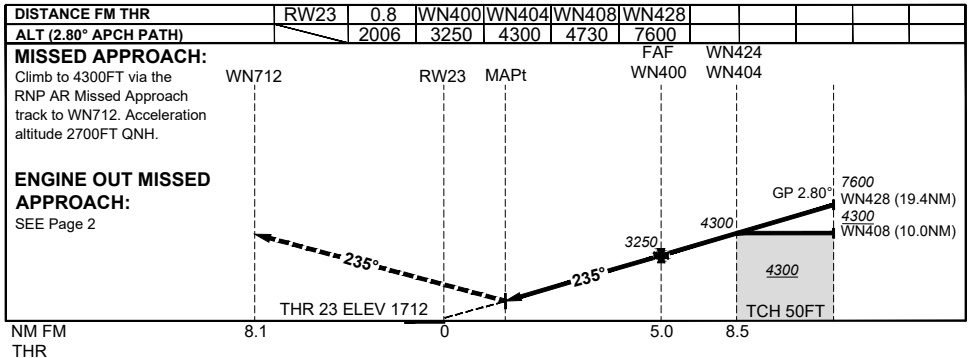
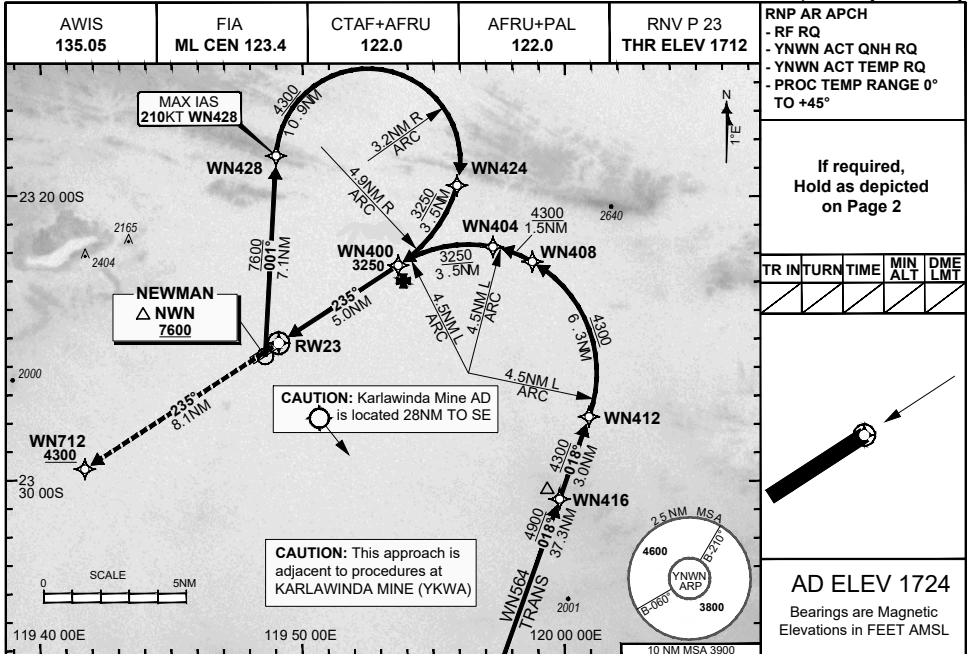


**FOR CASA APPROVED
OPERATORS ONLY**

28 NOV 2024

USE QNH

NEWMAN, WA (YNWN)



NOTES

- 1) Lateral transition to MAP must not be initiated prior to DA(H) PSN.
- 2) PAPI and glidepath not coincident.
- 3) Minimum MAP gradient (All Engines) 4.6% to 4300FT.
- 4) CAUTION: This approach is adjacent to procedures at KARLAWINDA MINE (YKWA).

CATEGORY	A	B	C	D
RNP (0.30)	NOT APPLICABLE		DA(H) 2006' (294)-1.6	
CIRCLING	NOT AUTHORISED			

202407301651 General Electric Company Proprietary & Confidential Information

Changes: Revised frequency box, Editorial.

NWNGN09-181

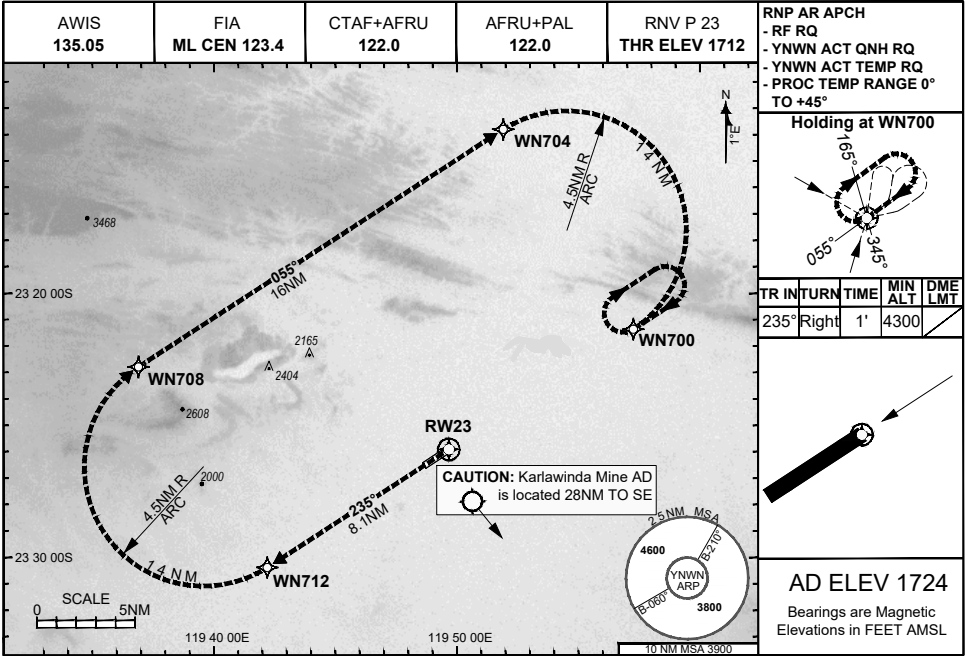
DO NOT USE FOR NAVIGATION

Prepared by GE Aerospace



**FOR CASA APPROVED
OPERATORS ONLY
USE QNH**

28 NOV 2024



ENGINE OUT MISSED APPROACH:

Track via the RNP AR Engine Out Missed Approach track to WN700 and hold as published.

Acceleration altitude 2700FT QNH (1000FT AGL).
Climb to 4300FT.

DO NOT USE FOR NAVIGATION

Prepared by GE Aerospace

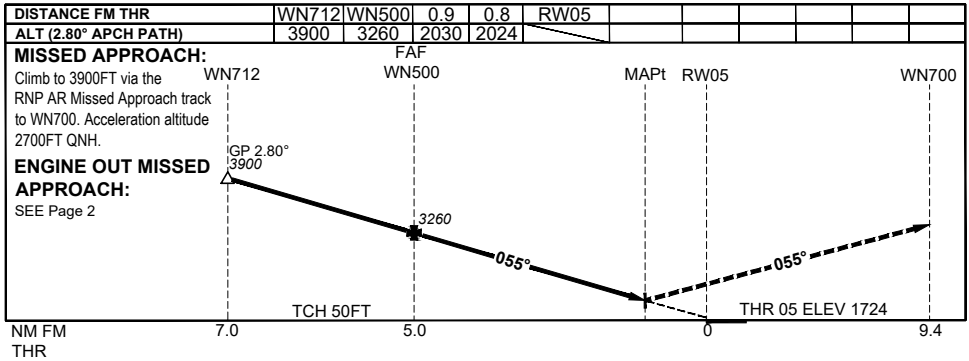
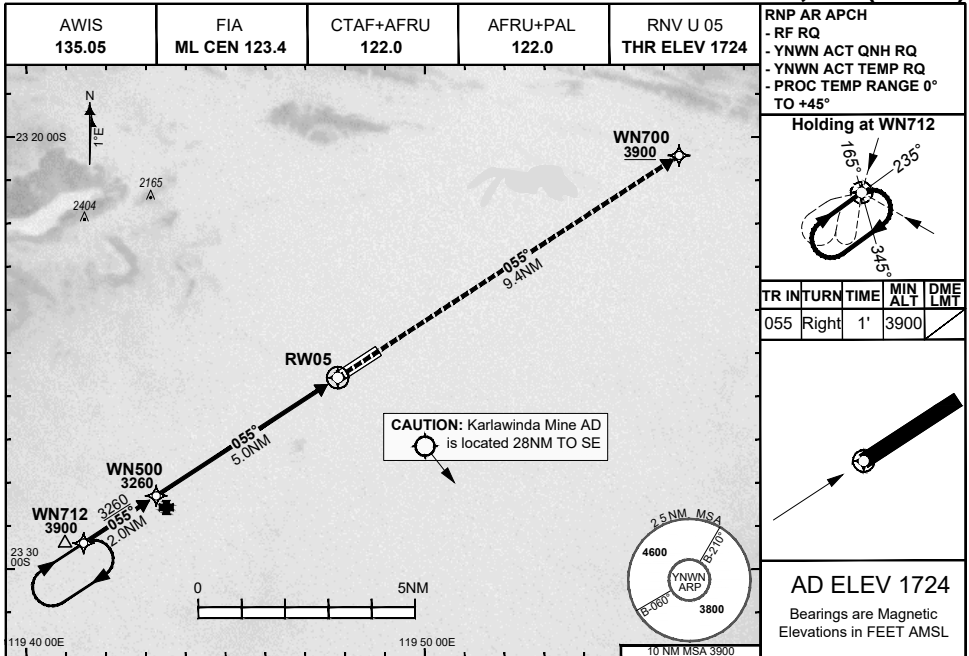


**FOR CASA APPROVED
OPERATORS ONLY**

28 NOV 2024

USE QNH

NEWMAN, WA (YNWN)



NOTES

CATEGORY	A	B	C	D
RNP (0.10)	NOT APPLICABLE		DA(H) 2024' (300)-1.6	
RNP (0.30)	NOT APPLICABLE		DA(H) 2030' (306)-1.6	
CIRCLING	NOT AUTHORISED			

- 1) Lateral transition to MAP must not be initiated prior to DA(H) PSN.
- 2) PAPI and glidepath not coincident.
- 3) Minimum MAP gradient (All Engines) 3.3% to 3900FT.

DO NOT USE FOR NAVIGATION

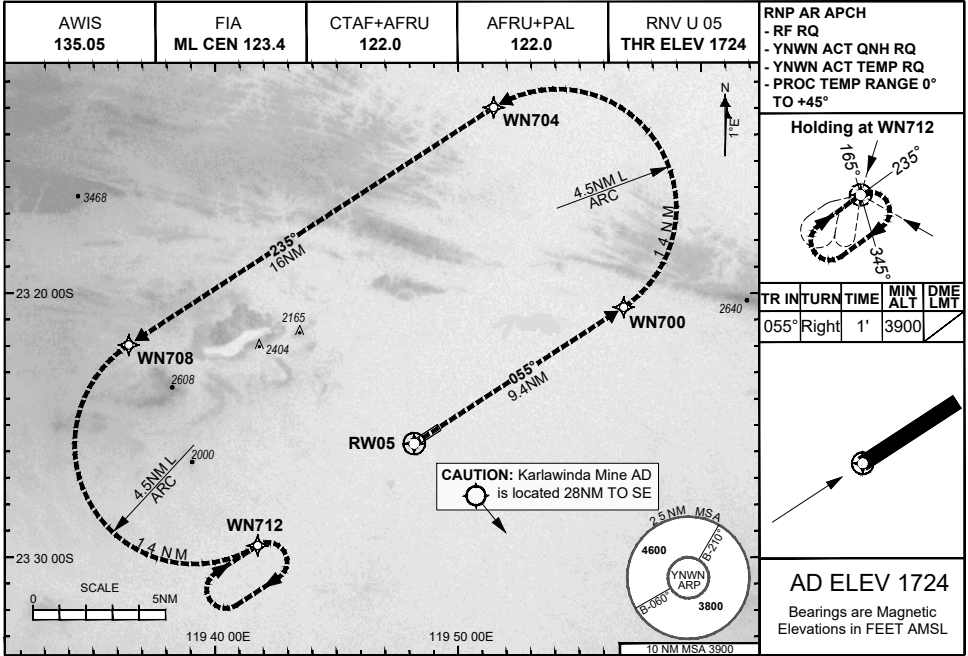
Prepared by GE Aerospace



28 NOV 2024

USE QNH

NEWMAN, WA (YNWN)



ENGINE OUT MISSED APPROACH:

Track via the RNP AR Engine Out Missed Approach track to WN712 and hold as published.

Acceleration altitude 2700FT QNH (1000FT AGL).
Climb to 3900FT.

DO NOT USE FOR NAVIGATION

Prepared by GE Aerospace

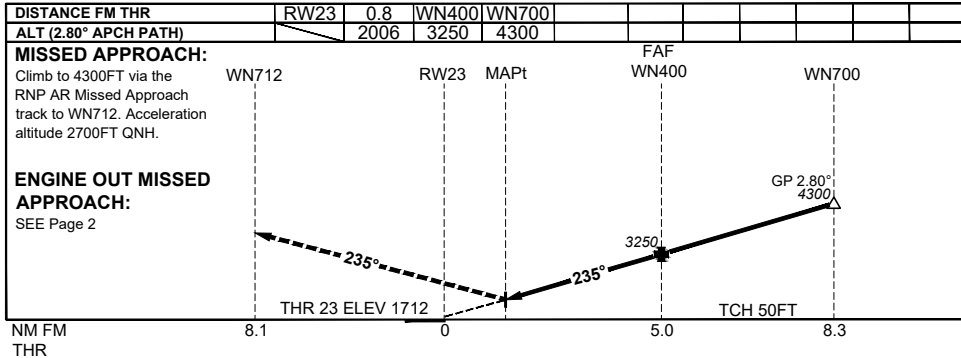
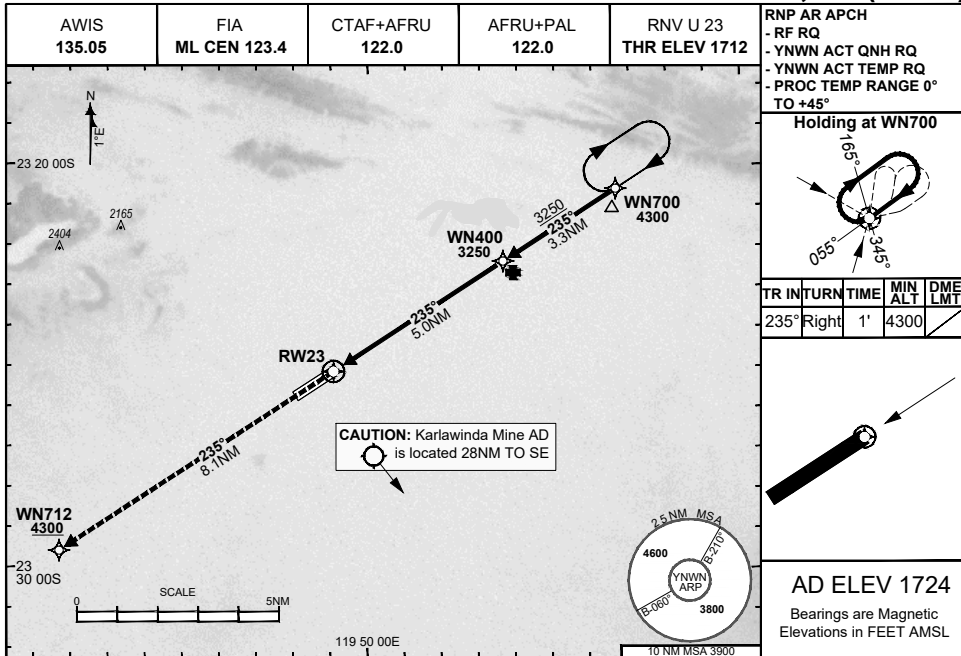


FOR CASA APPROVED OPERATORS ONLY

28 NOV 2024

USE QNH

NEWMAN, WA (YNWN)



NOTES

- 1) Lateral transition to MAP must not be initiated prior to DA(H) PSN.
- 2) PAPI and glidepath not coincident.
- 3) Minimum MAP gradient (All Engines) 4.6% to 4300FT.

CATEGORY	A	B	C	D
RNP (0.30)	NOT APPLICABLE		DA(H) 2006' (294)-1.6	
CIRCLING	NOT AUTHORISED			

202407301655 General Electric Company Proprietary & Confidential Information

Changes: Revised frequency box, Editorial.

NWNGN13-181

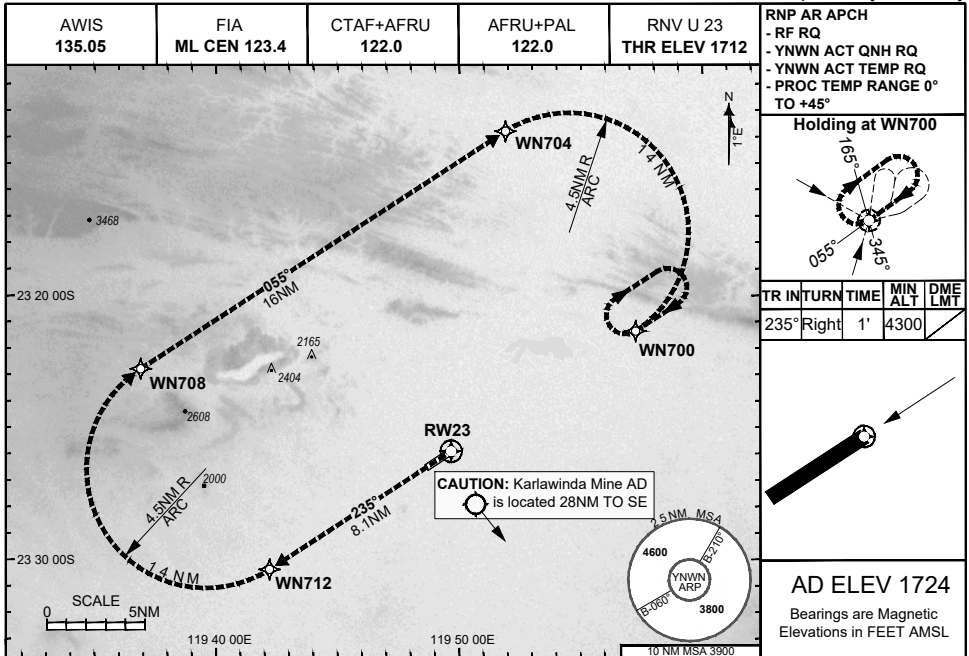
DO NOT USE FOR NAVIGATION
Prepared by GE Aerospace



28 NOV 2024

USE QNH

NEWMAN, WA (YNWN)



ENGINE OUT MISSED APPROACH:

Track via the RNP AR Engine Out Missed Approach track to WN700 and hold as published.

Acceleration altitude 2700FT QNH (1000FT AGL).
Climb to 4300FT.

DO NOT USE FOR NAVIGATION

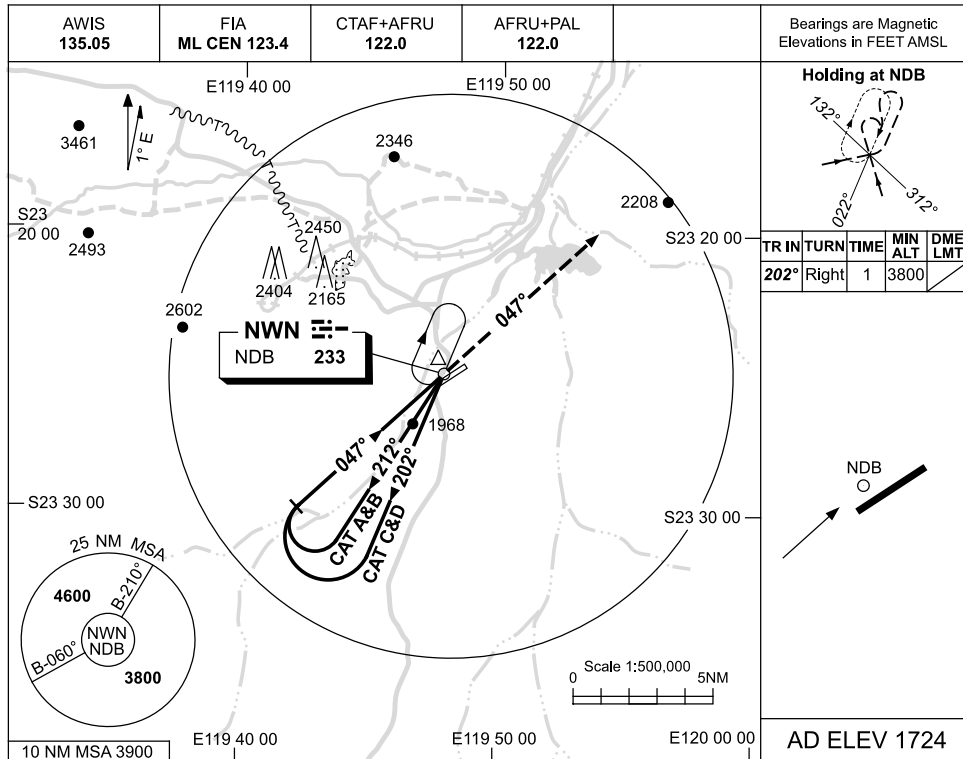
Prepared by GE Aerospace



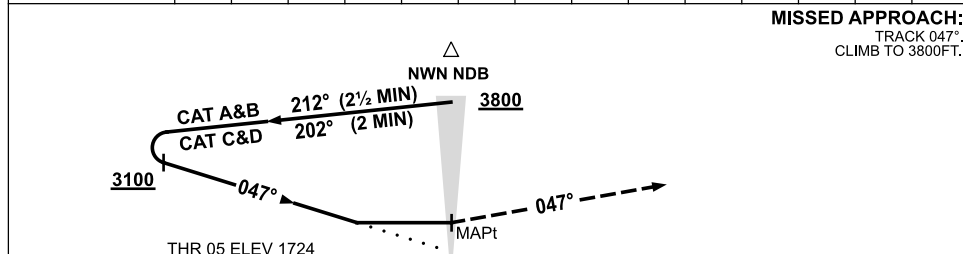
USE QNH

NDB RWY 05
NEWMAN, WA (YNWN)

26 MAY 2016



DME DIST									
ALT			NOT APPLICABLE						



NOTES

CATEGORY	A	B	C	D
S-I NDB	2500 (776-4.4)			
CIRCLING	2500 (776-2.4)	2730 (1006-4.0)	2860 (1136-5.0)	
ALTERNATE	(1276-4.4)	(1506-6.0)	(1636-7.0)	

1. MAX IAS:
 INITIAL : 210KT.

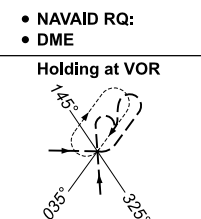
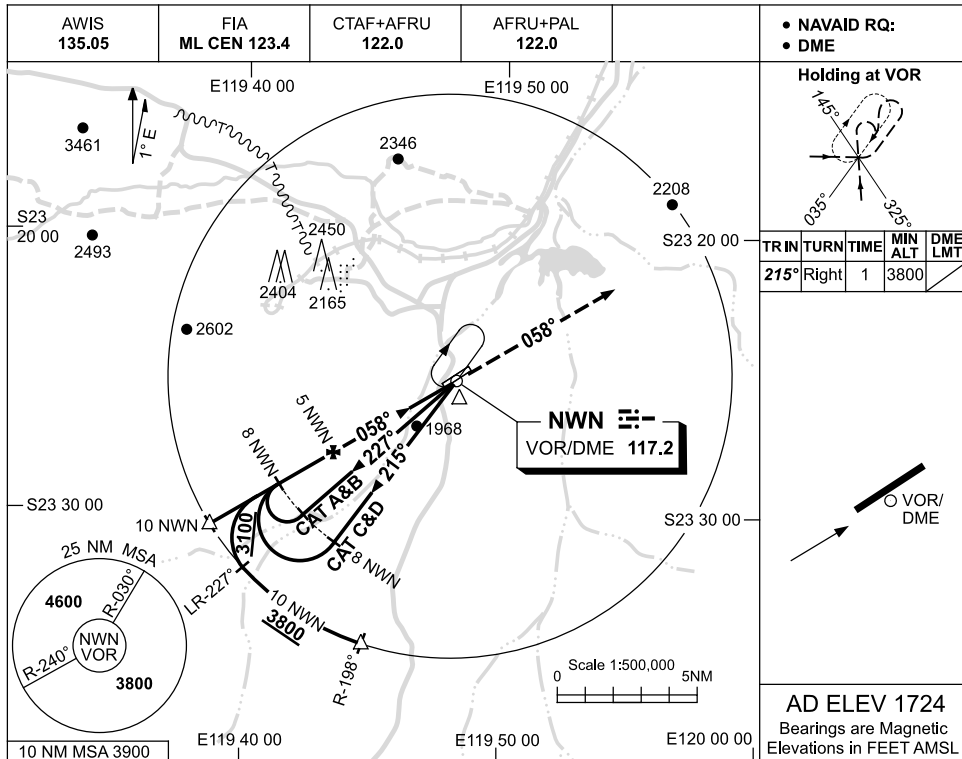
Changes: MAG VAR, D137 DELETED.

NWNNB01-147

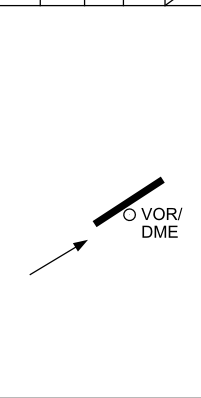
USE QNH

VOR-Z RWY 05
NEWMAN, WA (YNWN)

18 AUG 2016

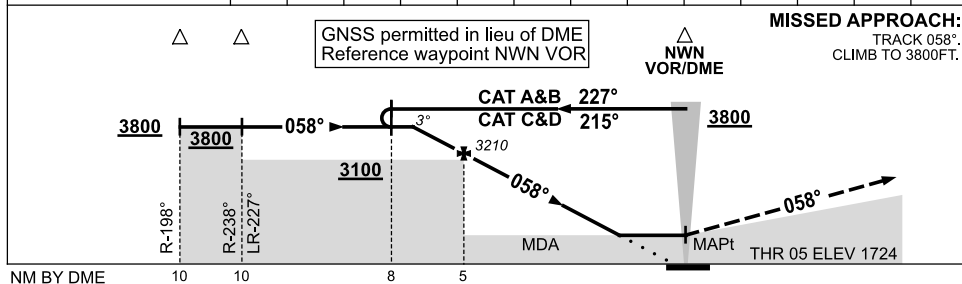


TR	IN	TURN	TIME	MIN ALT	DME LMT
215°	Right		1	3800	



AD ELEV 1724
 Bearings are Magnetic
 Elevations in FEET AMSL

DIST FM NWN DME	6.9	6	5	4	3	2.5							
ALT (3° APCH PATH)	3800	3530	3210	2890	2570	2410							



MISSED APPROACH:
 TRACK 058°.
 CLIMB TO 3800FT.

CATEGORY	A	B	C	D
S-I VOR/DME	2410 (686-3.9)			
CIRCLING	2500 (776-2.4)	2730 (1006-4.0)	2860 (1136-5.0)	
ALTERNATE	(1276-4.4)	(1506-6.0)	(1636-7.0)	

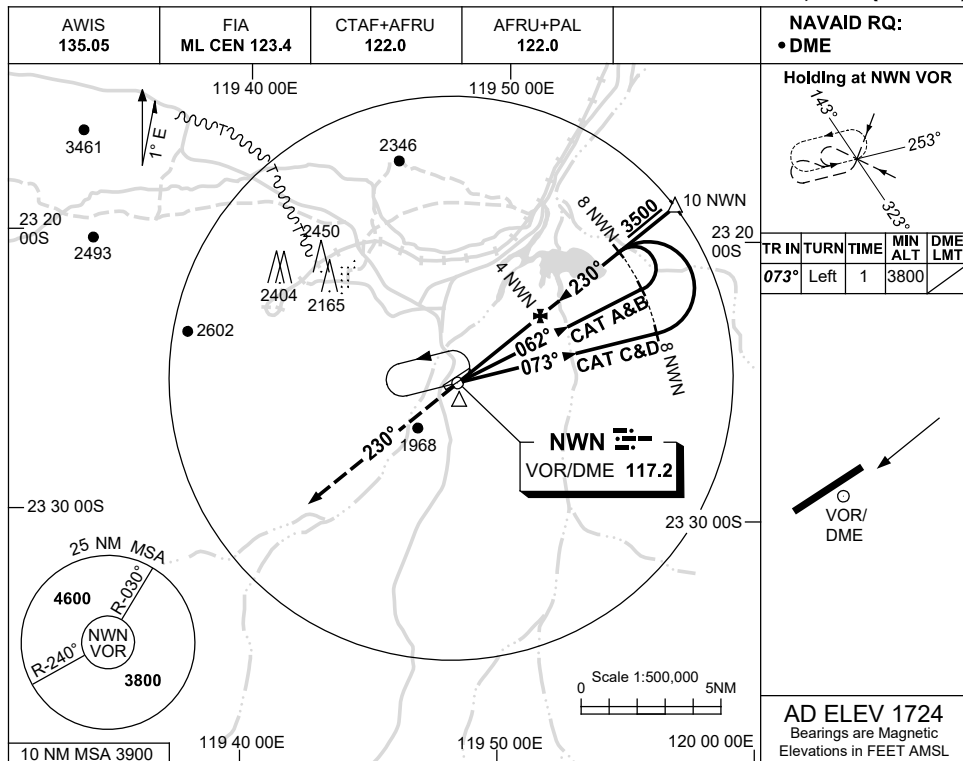
NOTES
 1. MAX IAS:
 INITIAL : 210KTS.

Changes: TIME LIMITS DELETED, Editorial. NWNVO01-148

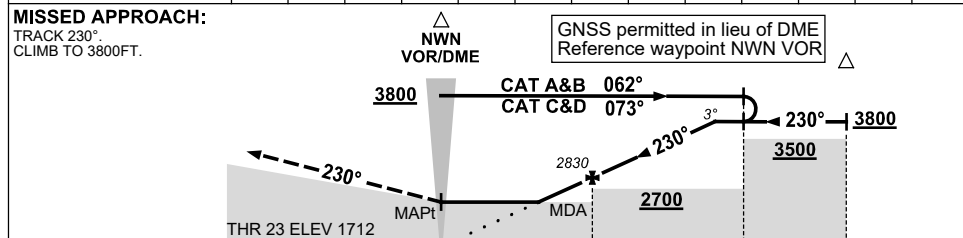
USE QNH

VOR RWY 23
NEWMAN, WA (YNWN)

24 MAR 2022



DIST TO NWN DME	2.2	3	4	5	6	7	7.1						
ALT (3° APCH PATH)	2260	2510	2830	3150	3470	3790	3800						



NOTES

CATEGORY	A	B	C	D
S-I VOR/DME	2260 (548-3.1)			
CIRCLING	2500 (776-2.4)	2730 (1006-4.0)	2860 (1136-5.0)	
ALTERNATE	(1276-4.4)	(1506-6.0)	(1636-7.0)	

1. MAX IAS:
 INITIAL : 210KT.

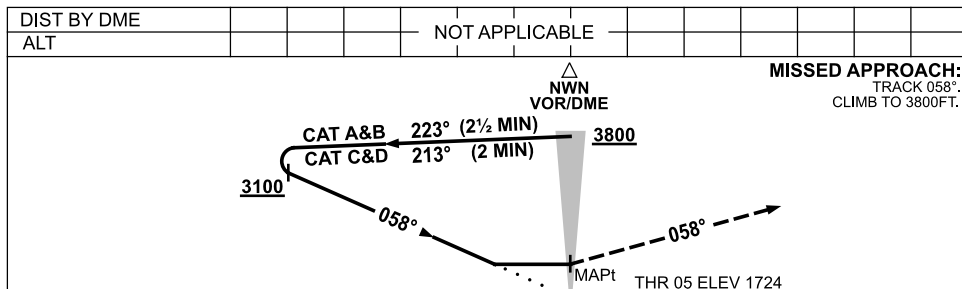
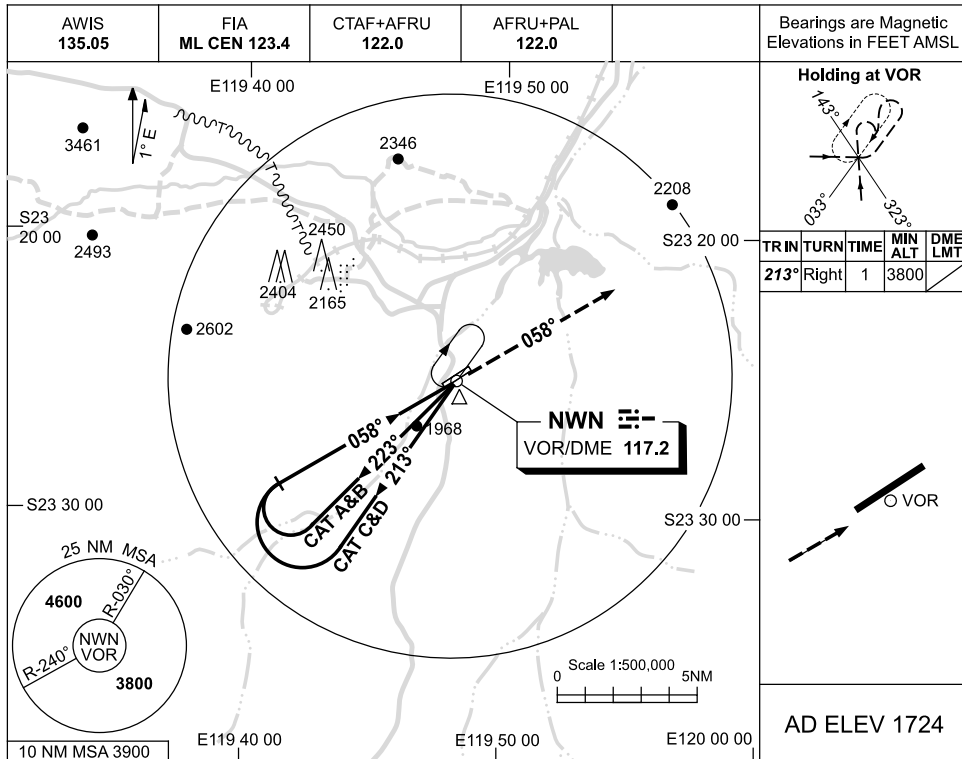
Changes: MIN SEGMENT ALTITUDE CORRECTION.

NWNVO02-170

USE QNH

VOR-Y RWY 05
NEWMAN, WA (YNWN)

26 MAY 2016



NOTES

1. MAX IAS:
 INITIAL : 210KT.

CATEGORY	A	B	C	D
S-I VOR	2450 (726-4.1)			
CIRCLING	2500 (776-2.4)	2730 (1006-4.0)	2860 (1136-5.0)	
ALTERNATE	(1276-4.4)	(1506-6.0)	(1636-7.0)	

Changes: MAG VAR, D137 DELETED.

NWNVO03-147