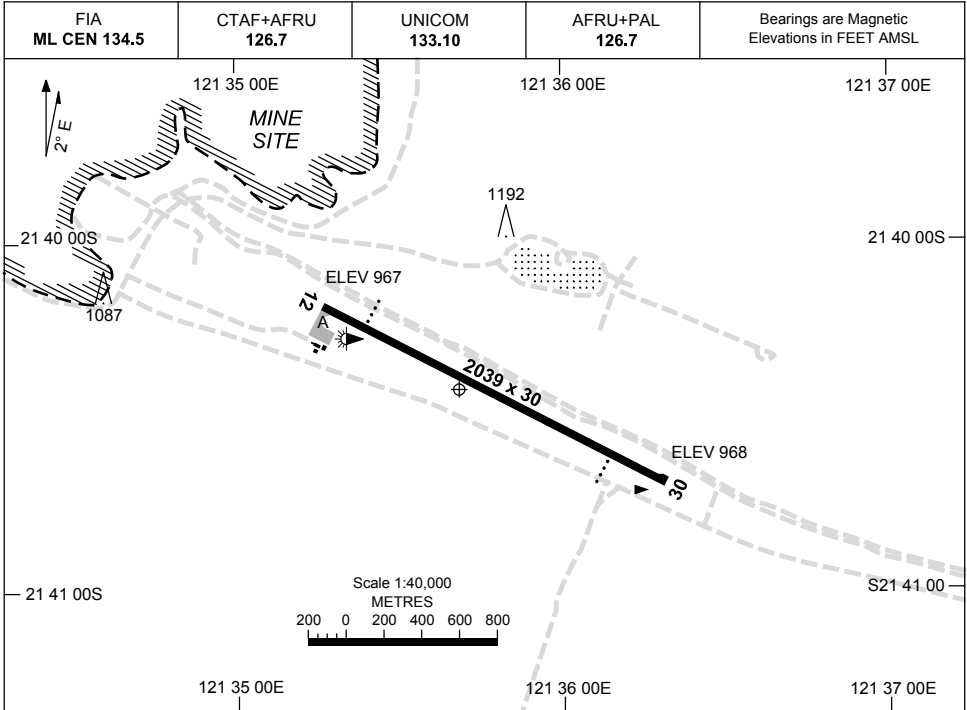


13 JUN 2024

AD ELEV 968
21 40 25S 121 35 41E

AERODROME CHART
NIFTY, WA (YCNF)



	AERODROME LIGHTING
RWY	RL : AFRU+PAL 126.7
12 ¹¹⁶	PAPI 3.0° 48FT PTBL
296 30	PAPI 3.0° 48FT PTBL

NOTES

1. FIA FREQ 134.5 AVBL IN CIRCUIT AREA.
2. RWY 12/30 PTBL LIGHTING AVBL FOR EMERG USE ONLY. 60 MIN PN RQ.
3. RWY 12/30 PAPI LIGHTING-PAL 30 MIN CYCLE.

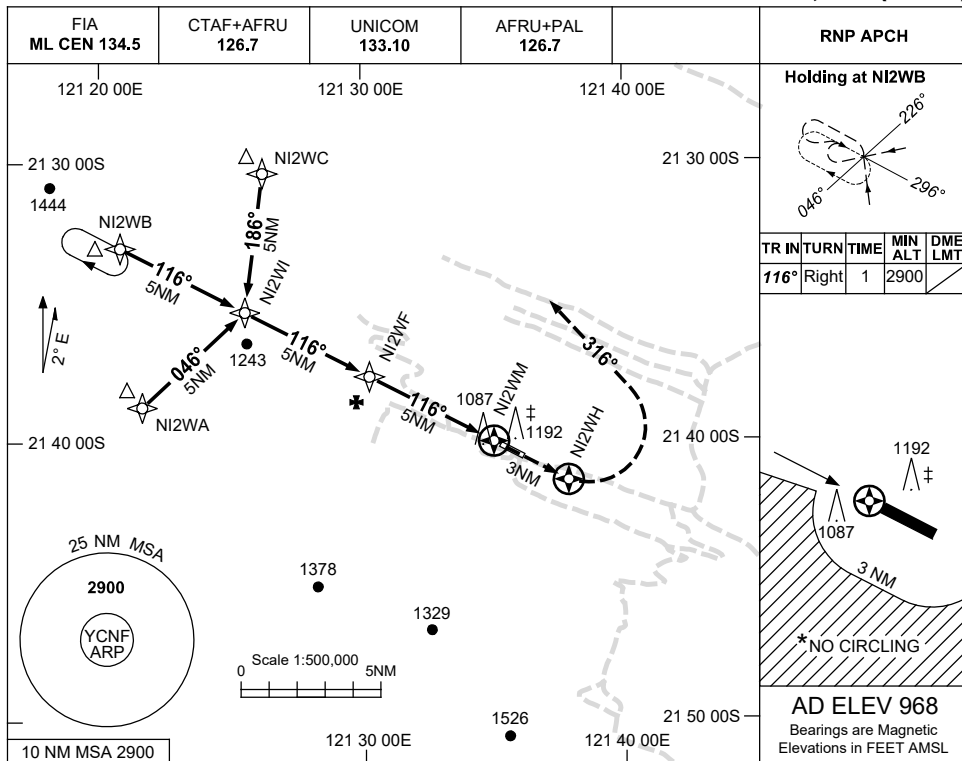
Changes: OBSTACLE ELEVATION.

CNFAD01-179

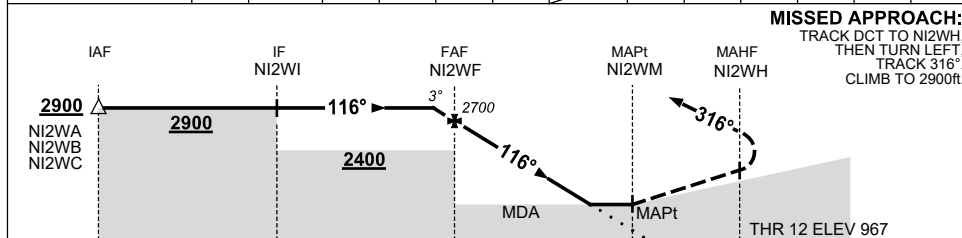
USE QNH

RNP RWY 12
NIFTY, WA (YCNF)

13 JUN 2024



NM TO NEXT WPT	0.6	NI2WF	4	3	2	1.3	NI2WM						
ALT (3° APCH PATH)	2900	2700	2380	2060	1740	1530							



MISSED APPROACH:
TRACK DCT TO NI2WH,
THEN TURN LEFT,
TRACK 316°.
CLIMB TO 2900ft.

CATEGORY	A	B	C	D
LNAV	1530 (562-3.2)			NOT APPLICABLE
CIRCLING	1590 (622-2.4)	1690 (722-4.0)		
ALTERNATE	(1122-4.4)		(1222-6.0)	

NOTES

- MAX IAS:
INITIAL : 210KT
HOLDING: 200KT.
- NO CIRCLING BEYOND 3NM S OF RWY 12/30.

‡ CAUTION:
UNMARKED/UNLIT
1192FT TWR 016°/
0.4NM FROM ARP.

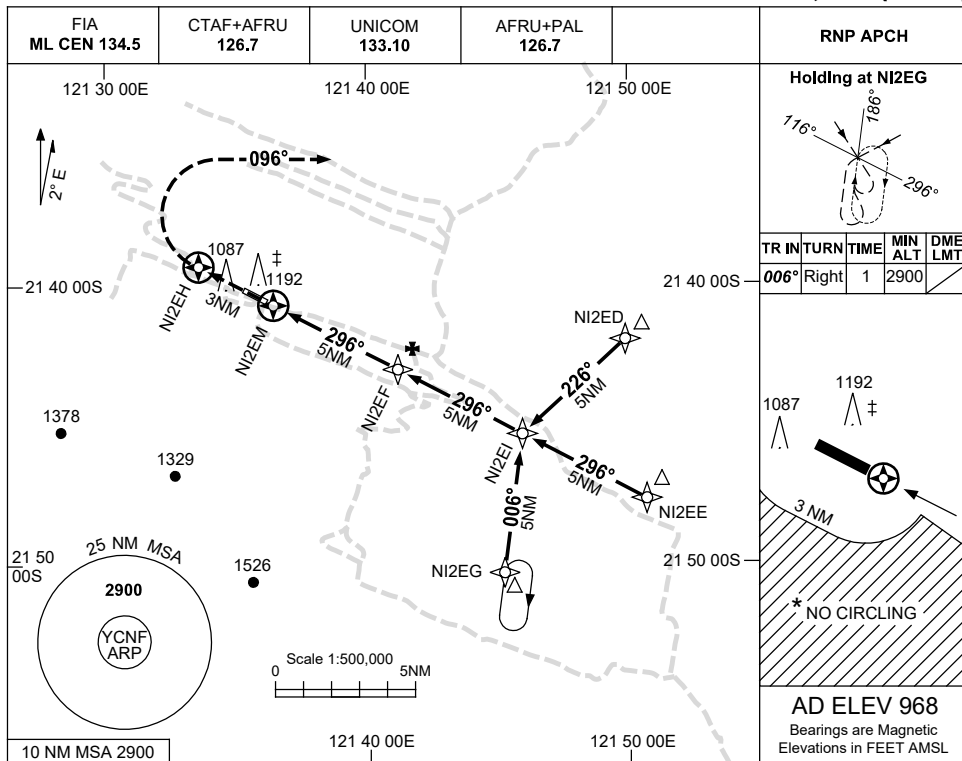
Changes: CIRCLING MINIMA, ALTERNATE MINIMA, OBSTACLE ELEVATION, WAYPOINT NAMES.

CNFGN01-179

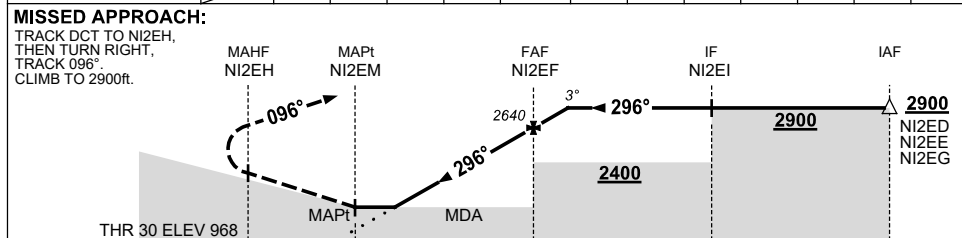
USE QNH

RNP RWY 30
NIFTY, WA (YCNF)

13 JUN 2024



NM TO NEXT WPT	NI2EM	1.3	2	3	4	NI2EF	0.8			
ALT (3° APCH PATH)		1470	1680	2000	2320	2640	2900			



NOTES

- 1. MAX IAS: INITIAL : 210KT.
- * 2. NO CIRCLING BEYOND 3NM S OF RWY 12/30.
- ‡ **CAUTION:** UNMARKED/UNLIT 1192FT TWR 016°/ 0.4NM FROM ARP.

CATEGORY	A	B	C	D
LNAV	1470 (502-2.8)			NOT APPLICABLE
CIRCLING	1590 (622-2.4)	1690 (722-4.0)		
ALTERNATE	(1122-4.4)		(1222-6.0)	

Changes: CIRCLING MINIMA, ALTERNATE MINIMA, OBSTACLE ELEVATION, WAYPOINT NAMES.

CNFGN02-179