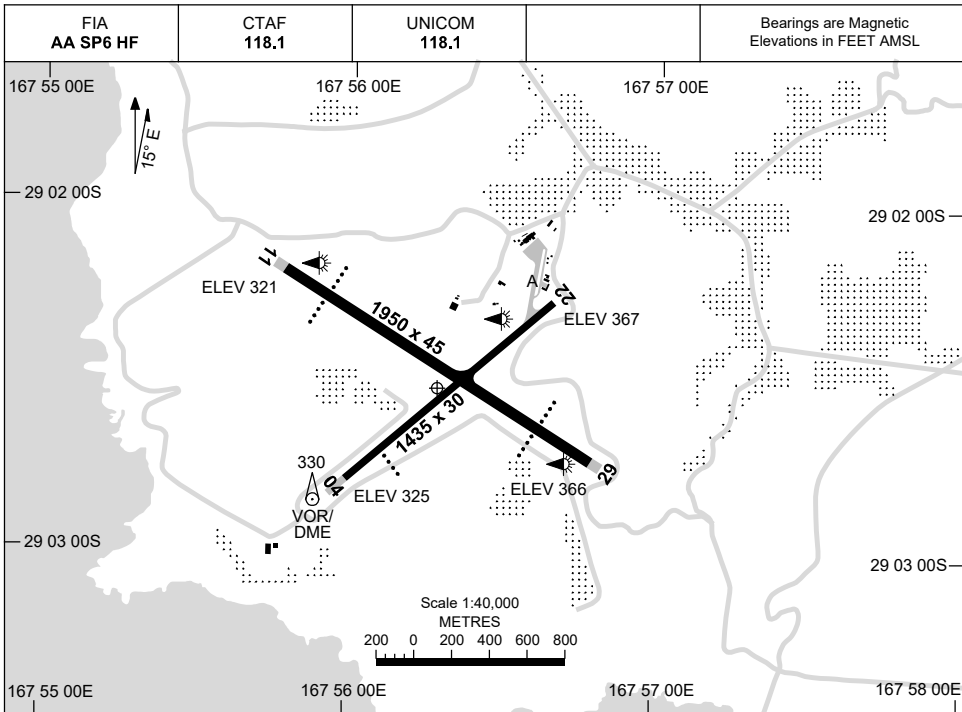


5 SEP 2024

AD ELEV 371
29 02 33S 167 56 17E

AERODROME CHART
NORFOLK ISLAND, (YSNF)



		AERODROME LIGHTING	
RWY		ABN : ALT W/G 8 SEC	
		TAXIWAY : BLUE EDGE	
		RL : SDBY (11 SEC) , PTBL (EMERG ONLY, 90 MIN PN)	
11 <small>107</small>		PAPI 3.0° 50FT	MIRL RTIL PTBL
<small>287</small> 29		PAPI 3.0° 50FT	MIRL RTIL PTBL
04 <small>035</small>		PAPI RIGHT SIDE 3.0° 50FT	LIRL RTIL PTBL
<small>215</small> 22			LIRL PTBL

NOTES

1. PARKING BAY CO-ORDINATES:

BAY 1	29 02 08.70S 167 56 35.52E
BAY 1A	29 02 09.25S 167 56 35.51E
BAY 2	29 02 07.44S 167 56 37.31E

2. AWIS (PHONE) 02 9353 6443

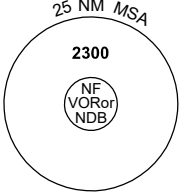
Changes: TURNING NODES REMOVED, Editorial.

SNFAD01-180

DME or GNSS ARRIVAL PROCEDURES NORFOLK ISLAND, (YSNF)

15 JUN 2023

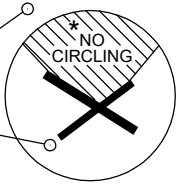
FIA AA SP6 HF	CTAF 118.1	UNICOM 118.1		Bearings are Magnetic Elevations in FEET AMSL
-------------------------	----------------------	------------------------	--	--



25 NM MSA
2300
NF VOR or NDB

**DME USING NF DME
REFERENCE WAYPOINT NF VOR**

AWIS (PHONE) 02 9353 6443



NO CIRCLING

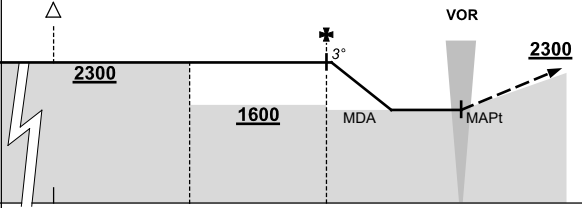
10 NM MSA 2300

NF NDB 260

NF VOR/DME 112.4

* NO CIRCLING IN
SECTOR N OF
RWYS 04/22 & 11/29.

AD ELEV 371

ALL ROUTES TO NF VOR		<p style="text-align: right;">VOR</p> <p style="text-align: right;">2300</p>	<p>MISSED APPROACH:</p> <p>CLIMB ON TRACK TO 2300FT.</p>
	<p>NM TO NF VOR 25 15 10 5 0</p>	<p>CIRCLING MINIMA</p>	<p>A,B: 1580-2.4 C: 1580-4.0 D: 1580-5.0</p>
<p>NM TO NF VOR 4.9 4 3 2.7</p>	<p>ALT (3° APCH PATH) 2300 2000 1690 1580</p>		

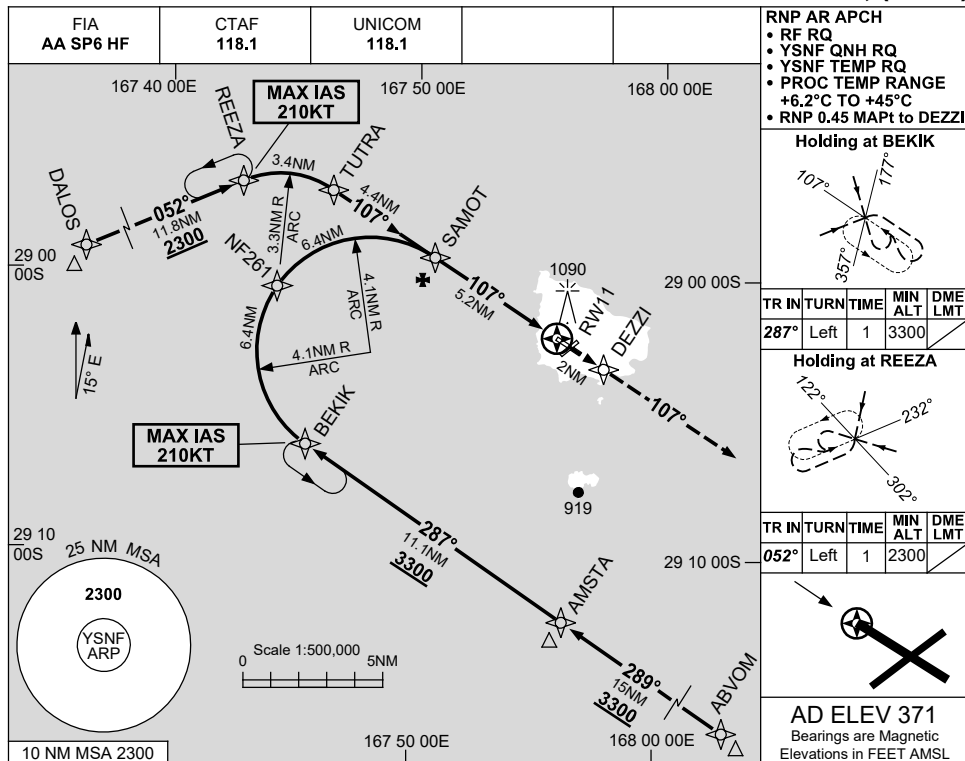
FOR CASA APPROVED OPERATORS ONLY

USE QNH

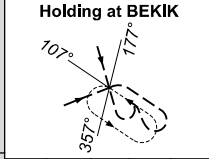
RNP X RWY 11 (AR)

NORFOLK ISLAND, (YSNF)

13 JUN 2024



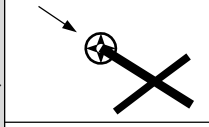
RNP AR APCH
 • RF RQ
 • YSNF QNH RQ
 • YSNF TEMP RQ
 • PROC TEMP RANGE +6.2°C TO +45°C
 • RNP 0.45 MAPt to DEZZI



TR	IN	TURN	TIME	MIN ALT	DME LMT
287°	Left	1	3300		

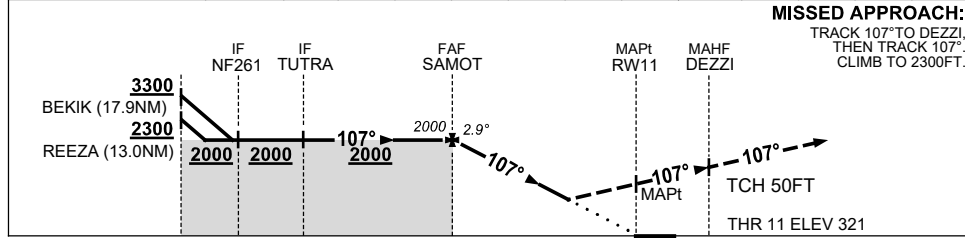


TR	IN	TURN	TIME	MIN ALT	DME LMT
052°	Left	1	2300		



AD ELEV 371
 Bearings are Magnetic
 Elevations in FEET AMSL

DIST TO NEXT WPT	SAMOT	5	4	3	2	1.7	1.4	1	RW11
ALT (2.9° APCH PATH)	2000	1910	1600	1300	990	890	800	690	



MISSED APPROACH:
 TRACK 107° TO DEZZI,
 THEN TRACK 107°
 CLIMB TO 2300FT.

CATEGORY	A	B	C	D
RNP(0.3)		890 (569-3.3)		
RNP(0.2)		800 (479-2.8)		
RNP(0.1)		690 (369-2.1)		
CIRCLING	NOT AUTHORISED			
ALTERNATE	(1129-4.4)		(1189-6.0)	(1509-7.0)

- NOTES**
- MAX IAS:
 BEKIK : 210KT.
 REEZA : 210KT.
 - APCH PATH ANGLE DOES NOT COINCIDE WITH PAPI ON GLIDE SLOPE INDICATION.
 - AWIS (PHONE)
 02 9353 6443

Changes: TUTRA REPLACES PINKY, BEKIK REPLACES BECKY.

SNFGN01-199

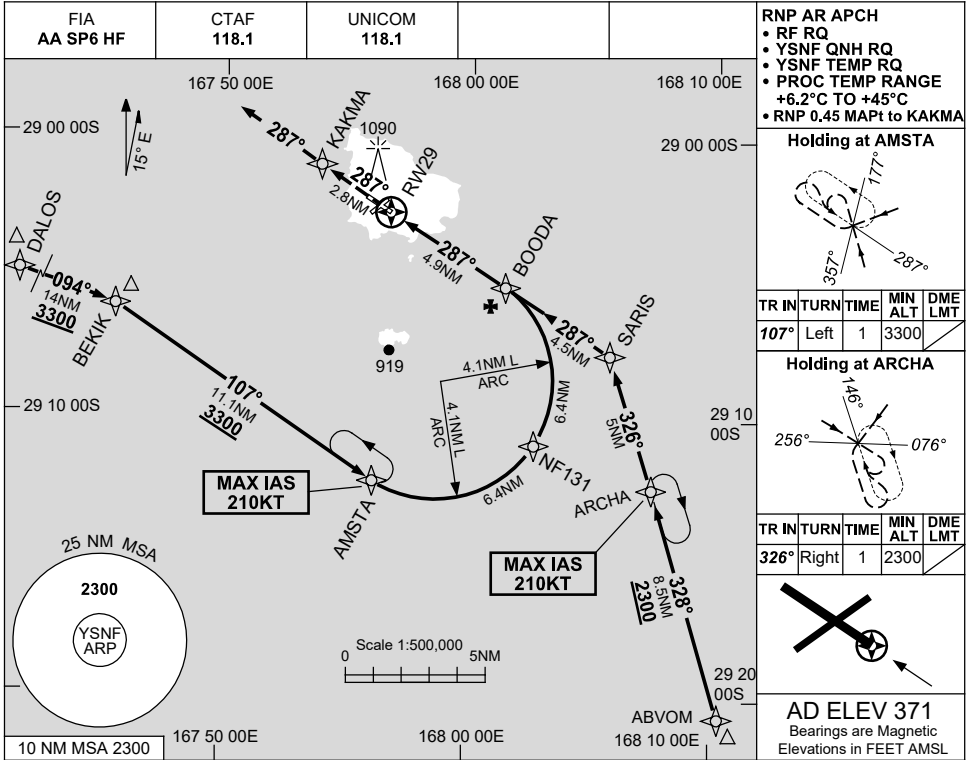
FOR CASA APPROVED OPERATORS ONLY

RNP X RWY 29 (AR)

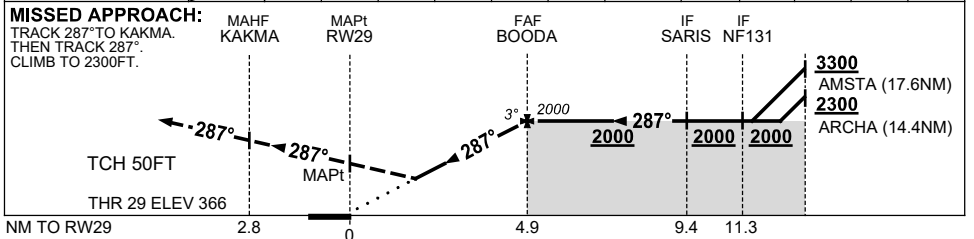
13 JUN 2024

USE QNH

NORFOLK ISLAND, (YSNF)



DIST TO NEXT WPT	RW29	0.9	1.1	1.5	2	3	4	BOODA			
ALT (3° APCH PATH)		690	780	890	1050	1370	1690	2000			



NOTES

CATEGORY	A	B	C	D
RNP(0.3)		890 (524-3.0)		
RNP(0.2)		760 (394-2.2)		
RNP(0.1)		690 (324-1.8)		
CIRCLING	NOT AUTHORISED			
ALTERNATE	(1129-4.4)		(1189-6.0) (1509-7.0)	

1. MAX IAS:
ARCHA : 210KT
AMSTA : 210KT.
2. AWIS (PHONE)
02 9353 6443

Changes: BEKIK REPLACES BECKY, SARIS REPLACES SIRUS, KAKMA REPLACES MUMSY.

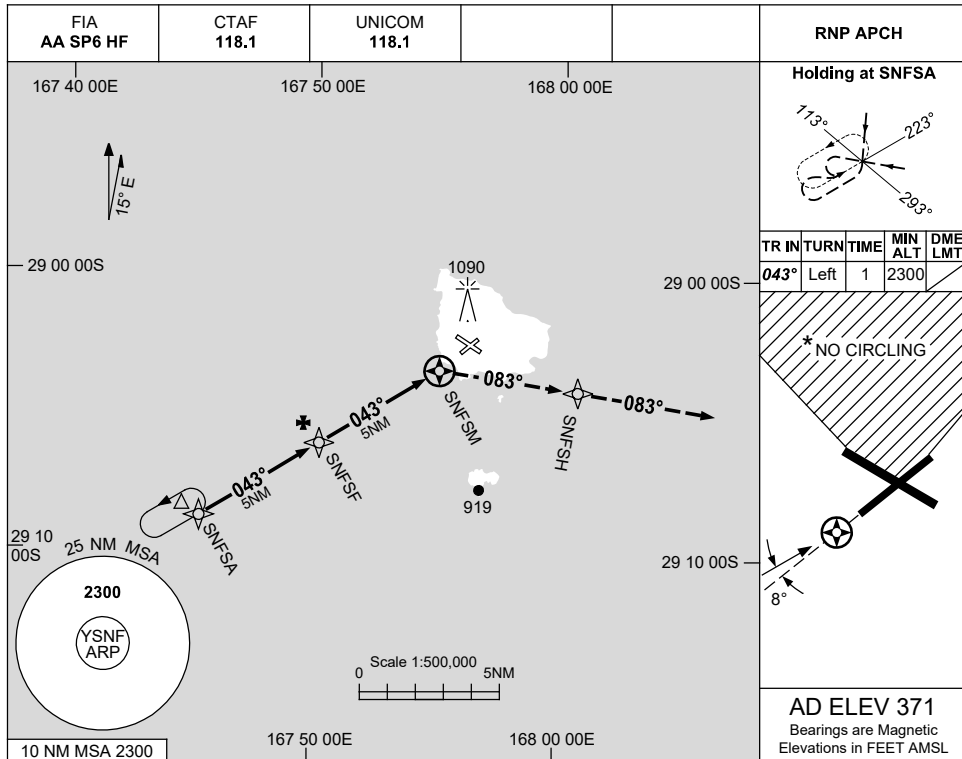
SNFGN02-179

USE QNH

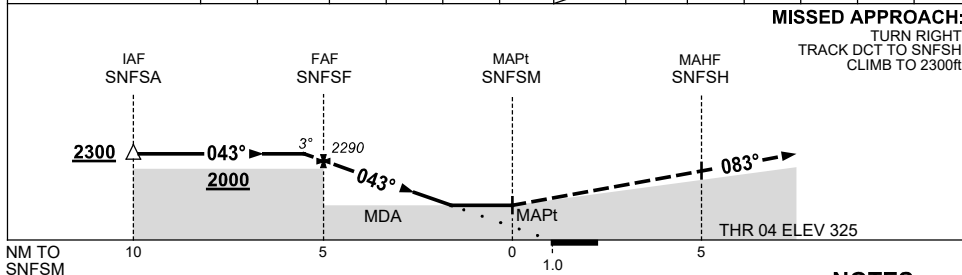
RNP RWY 04

28 NOV 2024

NORFOLK ISLAND, (YSNF)



NM TO NEXT WPT	0.1	SNFSF	4	3	2	1.2	SNFSM						
ALT (3° APCH PATH)	2300	2290	1970	1650	1330	1060							



NOTES

1. MAX IAS:
INITIAL : 210KT.
SNFSH : 170KT.
- * 2. NO CIRCLING IN SECTOR N OF RWYS 04/22 & 11/29.
3. AWIS (PHONE)
02 9353 6443

CATEGORY	A	B	C	D
LNAV	1060 (735-4.1)			NOT APPLICABLE
CIRCLING	1100 (729-2.4)		1160 (789-4.0)	
ALTERNATE	(1229-4.4)		(1289-6.0)	

Changes: MAX IAS AT SNFSH.

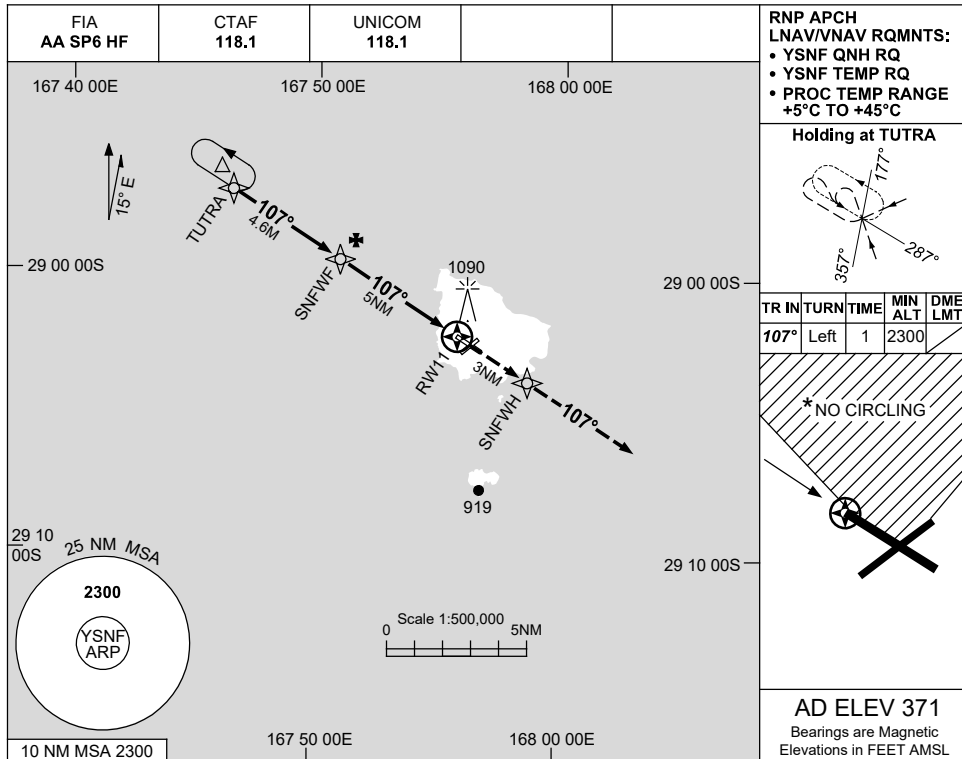
SNFGN03-181

USE QNH

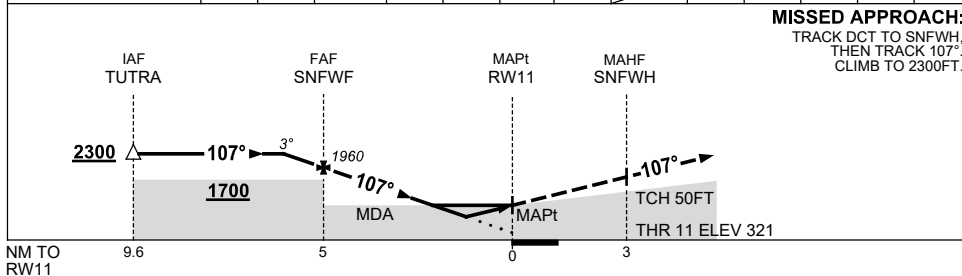
RNP Y RWY 11

NORFOLK ISLAND, (YSNF)

13 JUN 2024



NM TO NEXT WPT	1.1	1	SNFWF	4	3	2.2	1.8	RW11				
ALT (3° APCH PATH)	2300	2280	1960	1640	1330	1070	960					



NOTES

CATEGORY	A	B	C	D
LNAV/VNAV	960 (639-3.6)			
LNAV	1070 (749-4.3)			
CIRCLING	1100 (729-2.4)		1160 (789-4.0)	1480 (1109-5.0)
ALTERNATE	(1229-4.4)		(1289-6.0)	(1609-7.0)

1. MAX IAS:
INITIAL : 210KT.
- * 2. NO CIRCLING IN SECTOR N OF RWYS 04/22 & 11/29.
3. AWIS (PHONE)
02 9353 6443

Changes: TUTRA REPLACES PINKY.

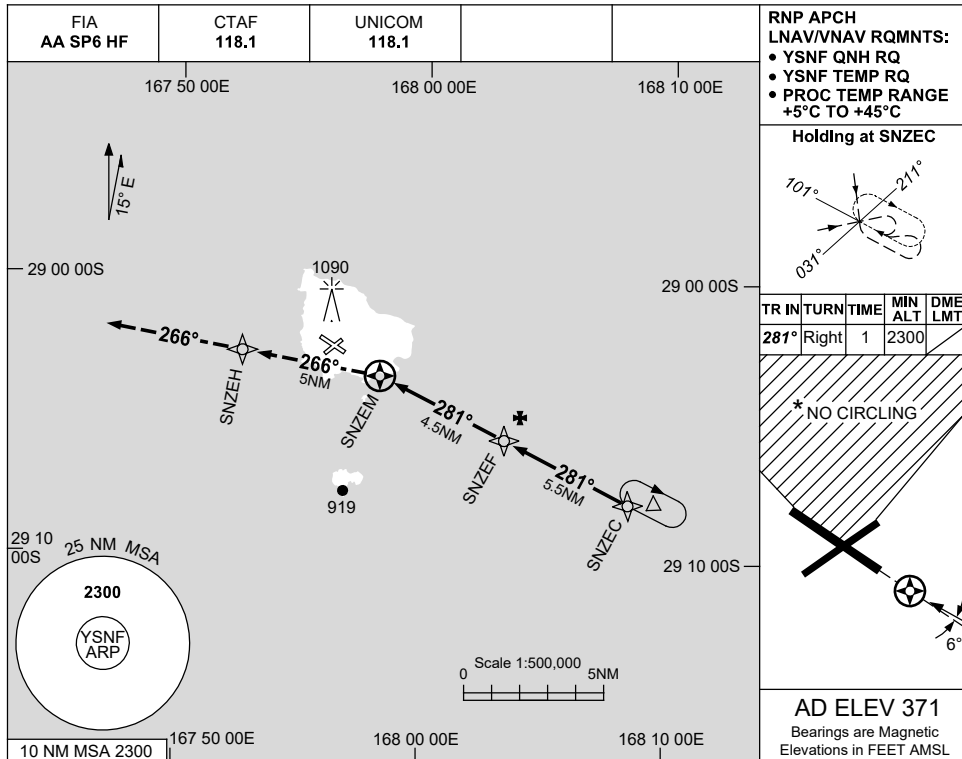
SNFGN04-179

USE QNH

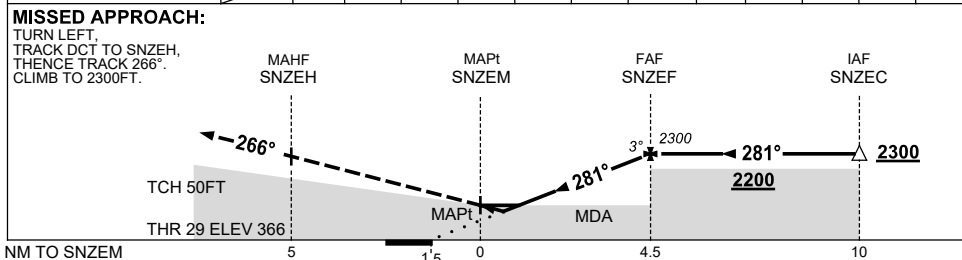
RNP Y RWY 29

15 JUN 2023

NORFOLK ISLAND, (YSNF)



NM TO NEXT WPT	SNZEM	0.3	0.6	1	2	3	4	SNZEF				
ALT (3° APCH PATH)		990	1070	1210	1530	1850	2170	2300				



NOTES

CATEGORY	A	B	C	D
LNAV/VNAV	990 (624-3.5)			
LNAV	1070 (699-4.0)			
CIRCLING	1100 (729-2.4)	1160 (789-4.0)	1480 (1109-5.0)	
ALTERNATE	(1229-4.4)	(1289-6.0)	(1609-7.0)	

1. MAX IAS:
INITIAL : 210KT
MAP TURN: 200KT

* 2. NO CIRCLING IN SECTOR N OF RWYS 04/22 & 11/29.

3. AWIS (PHONE)
02 9353 6443

Changes: TWR ELEVATION.

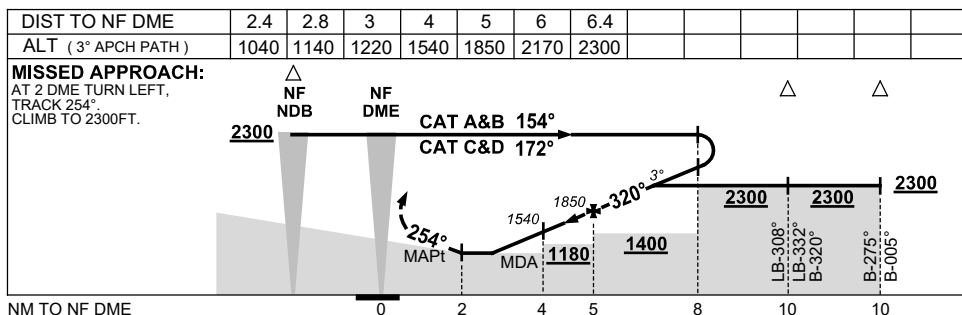
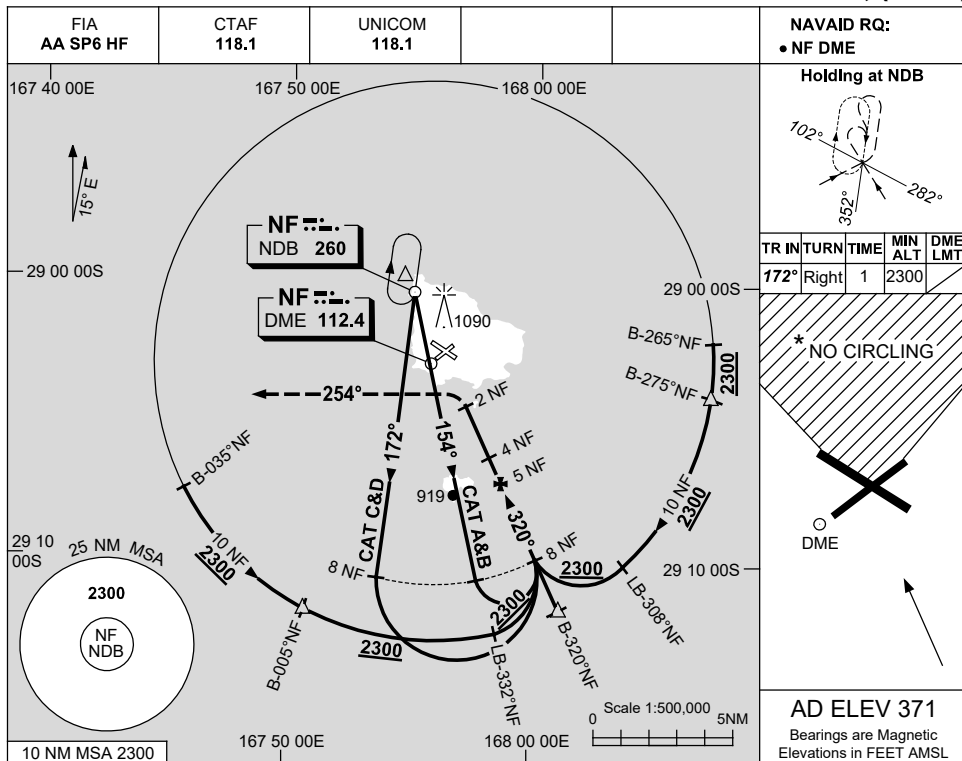
SNFGN05-175

USE QNH

NDB-A

15 JUN 2023

NORFOLK ISLAND, (YSNF)



NOTES

CATEGORY	A	B	C	D
CIRCLING *	1100 (729-2.4)		1160 (789-4.0)	1480 (1109-5.0)
ALTERNATE	(1229-4.4)		(1289-6.0)	(1609-7.0)

1. MAX IAS:
INITIAL : 230KT.
MAP TURN: 220KT.
- * 2. NO CIRCLING IN
SECTOR N OF
RWYS 04/22 & 11/29.
3. AWIS (PHONE)
02 9353 6443

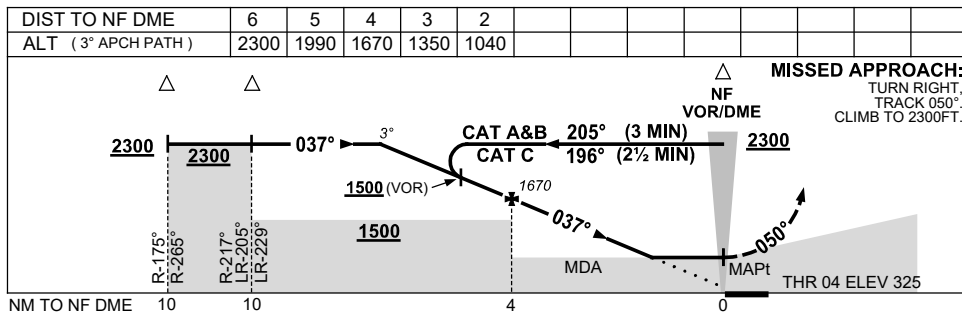
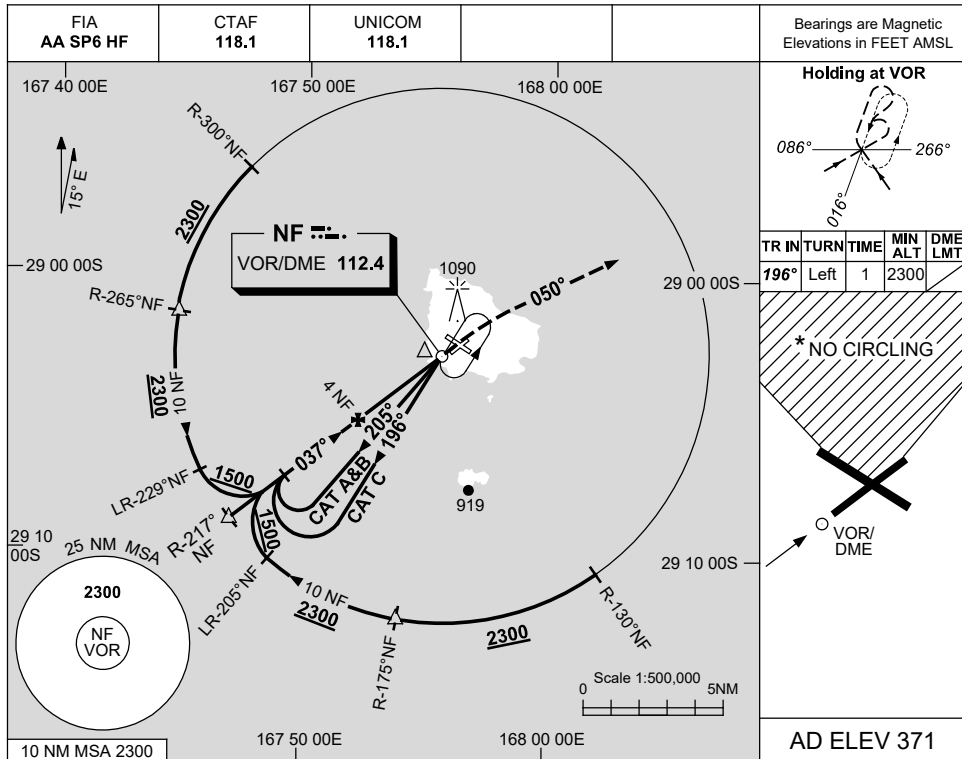
Changes: TWR ELEVATION.

SNFNB01-175

USE QNH

VOR RWY 04
NORFOLK ISLAND, (YSNF)

15 JUN 2023



NOTES

CATEGORY	A	B	C	D
S-I VOR or VOR/DME	1100 (775-4.4)			NOT AUTHORISED
CIRCLING*	1100 (729-2.4)		1160 (789-4.0)	
ALTERNATE	(1229-4.4)		(1289-6.0)	

1. MAX IAS:
 INITIAL : 230KT.
 MAP TURN: 160KT.
- * 2. NO CIRCLING IN SECTOR N OF RWYS 04/22 & 11/29.
3. AWIS (PHONE)
 02 9353 6443

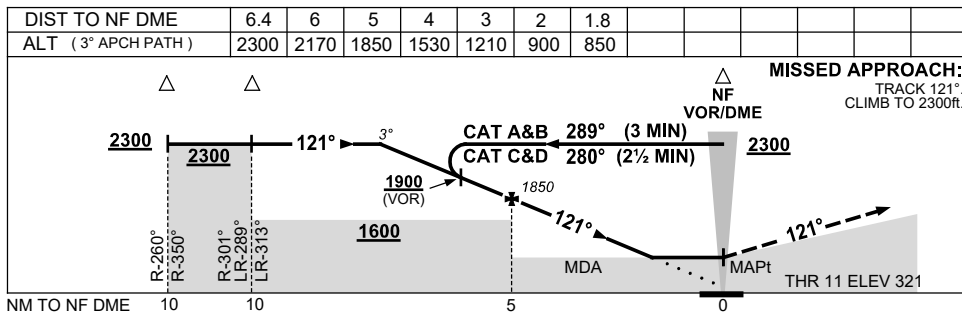
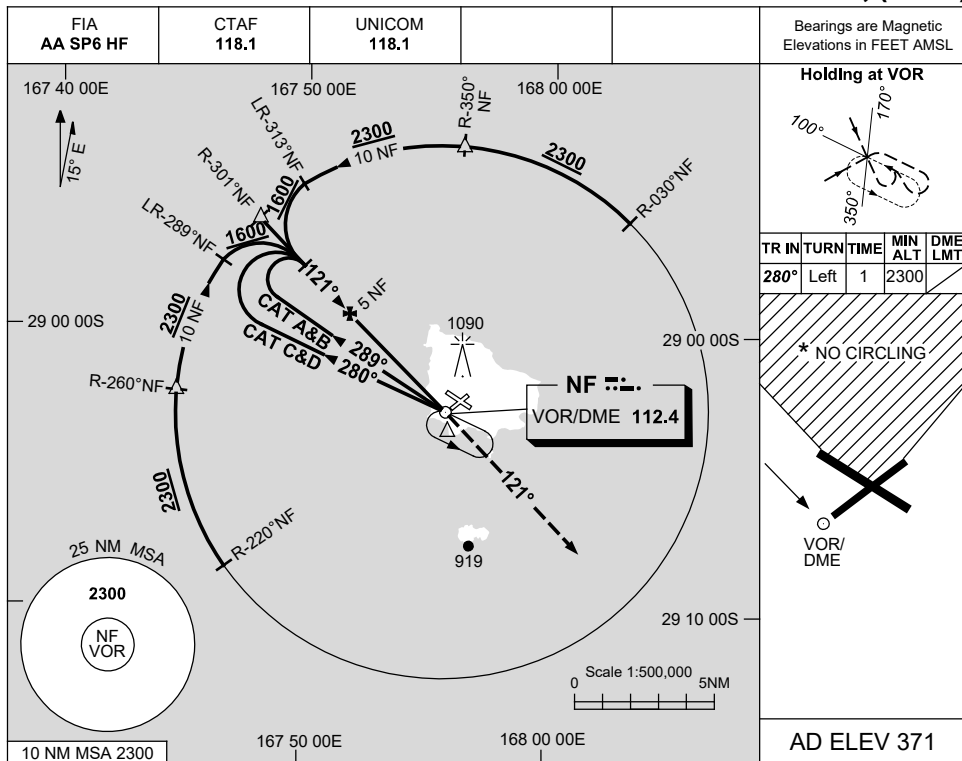
Changes: TWR ELEVATION.

SNFV001-175

USE QNH

VOR RWY 11
NORFOLK ISLAND, (YSNF)

28 NOV 2024



NOTES

CATEGORY	A	B	C	D
S-I VOR/DME		880 (559-3.2)		
S-I VOR		930 (609-3.5)		
CIRCLING *	1100 (729-2.4)		1160 (789-4.0)	1480 (1109-5.0)
ALTERNATE	(1229-4.4)		(1289-6.0)	(1609-7.0)

1. MAX IAS:
INITIAL : 230KLT.
- *2. NO CIRCLING IN
SECTOR N OF
RWYS 04/22 & 11/29.
3. AWIS (PHONE)
02 9353 6443

Changes: MNM ALT.

SNFVO02-181

