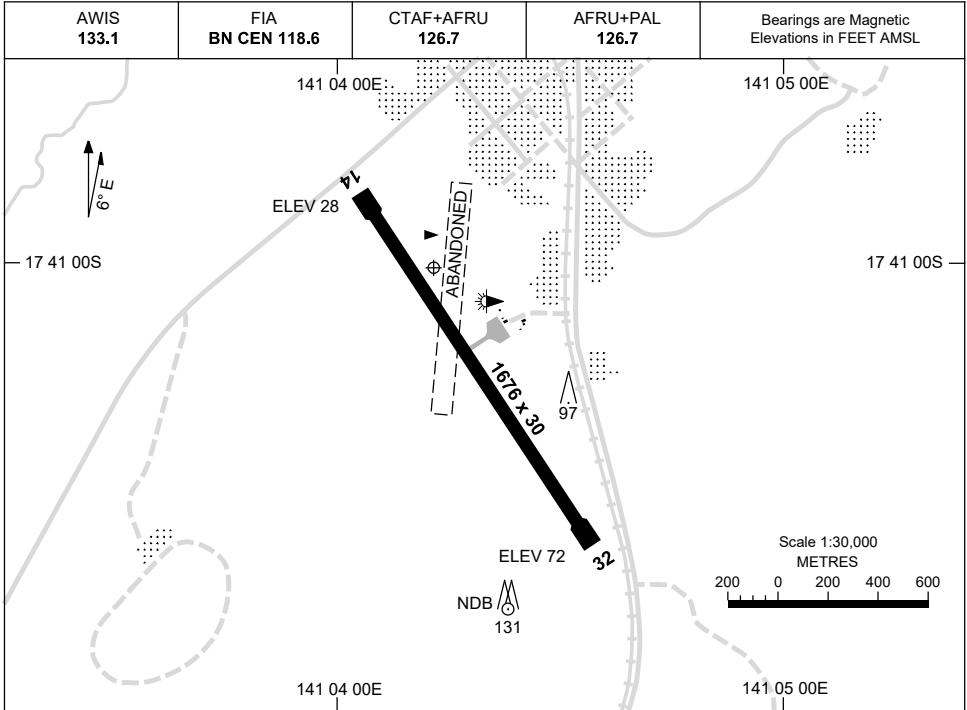


17 JUN 2021

AD ELEV 73  
17 41 06S 141 04 13E

AERODROME CHART  
**NORMANTON, QLD (YNTN)**



	<b>AERODROME LIGHTING</b>
<b>RWY</b>	TAXIWAY : BLUE EDGE RL : AFRU+PAL 126.7 , SDBY (15 SEC)
<b>14</b> <sup>141</sup> <sup>321</sup> <b>32</b>	LIRL LIRL

**NOTES**

Changes: COORD FMT.

NTNAD01-167

**GNSS ARRIVAL PROCEDURES  
NORMANTON, QLD (YNTN)**

17 JUN 2021

AWIS 133.1	FIA BN CEN 118.6	CTAF+AFRU 126.7	AFRU+PAL 126.7		Bearings are Magnetic Elevations in FEET AMSL
---------------	---------------------	--------------------	-------------------	--	--

**REFERENCE WAYPOINT NTN NDB**

25 NM MSA

1500

NTN NDB

NTN NDB 311

10 NM MSA 1500

AD ELEV 73

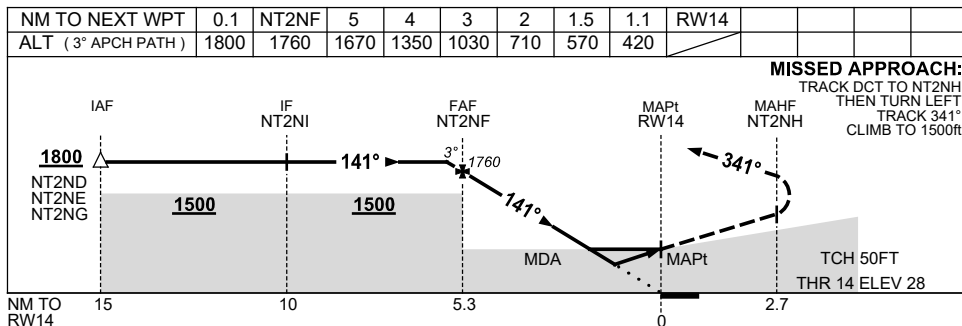
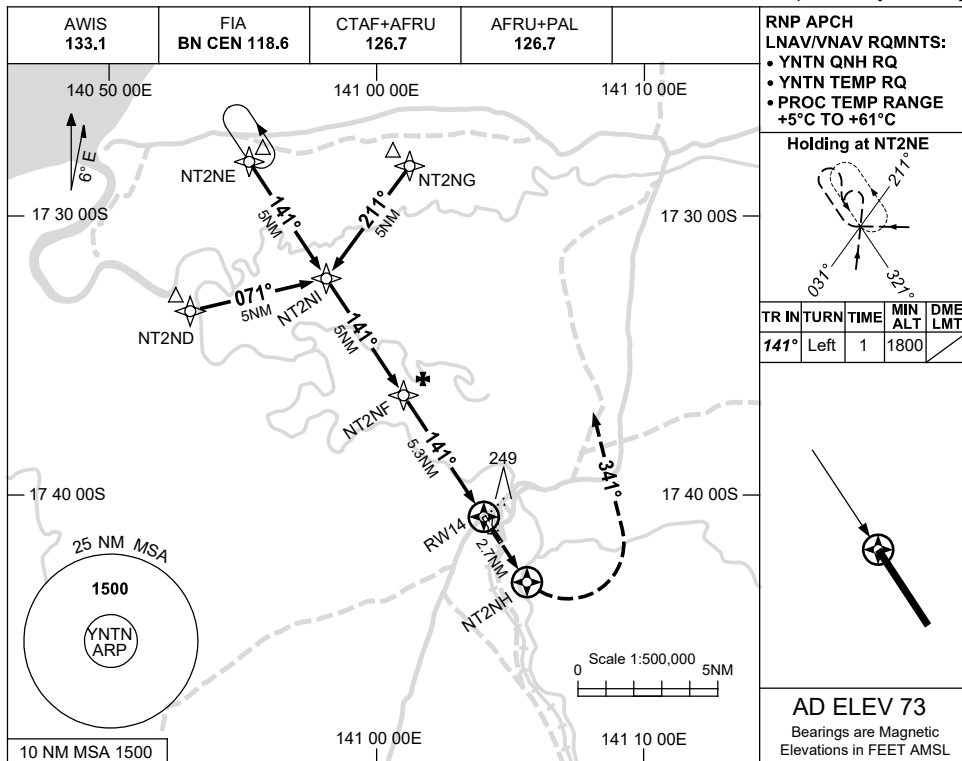
<b>ALL ROUTES TO NTN NDB</b>						<b>MISSED APPROACH:</b> TRACK AS REQUIRED. CLIMB TO 1500FT.
	NM TO NTN NDB	25	15	5	0	
<b>CIRCLING MINIMA</b>			A,B: 670-2.4	C: 770-4.0	D: N/A	
NM TO NTN NDB	5	4	3	2.7	2.4	
ALT (3° APCH PATH)	1500	1180	860	770	670	

USE QNH

RNP RWY 14

21 MAR 2024

**NORMANTON, QLD (YNTN)**



**NOTES**

CATEGORY	A	B	C	D
LNAV/VNAV	<b>420</b> (392-2.2)			<b>NOT APPLICABLE</b>
LNAV	<b>570</b> (542-3.1)			
CIRCLING	<b>670</b> (597-2.4)	<b>770</b> (697-4.0)		
ALTERNATE	(1097-4.4)		(1197-6.0)	

1. MAX IAS:  
INITIAL : 210KT.

Changes: LNAV/VNAV, LNAV MINIMA, WPT NAMING CONVENTION, MAPt, Editorial.

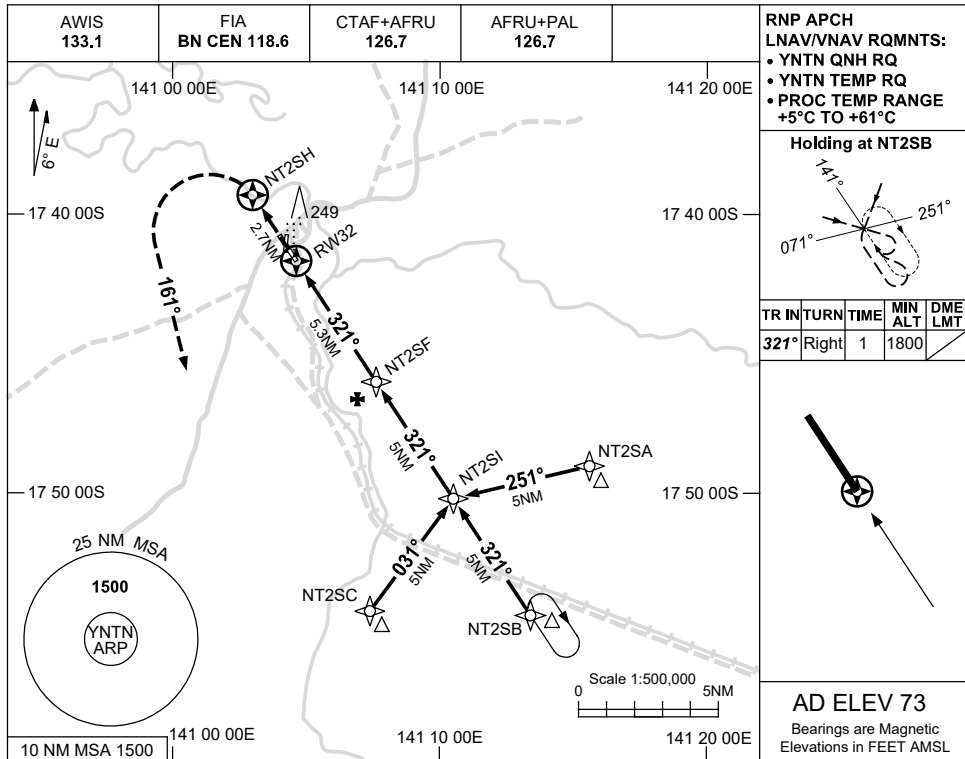
NTNGN01-178

USE QNH

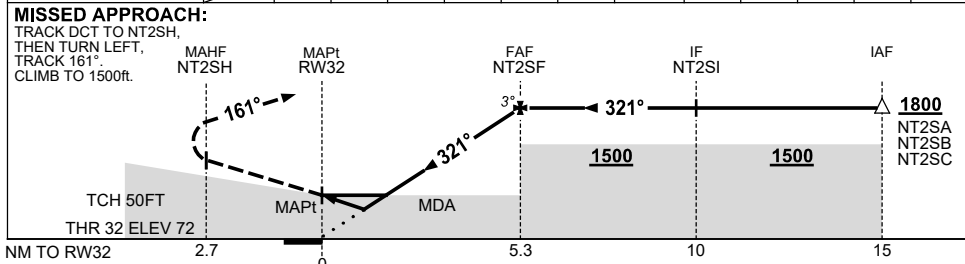
RNP RWY 32

**NORMANTON, QLD (YNTN)**

21 MAR 2024



NM TO NEXT WPT	RW32	0.9	1.5	2	3	4	5	NT2SF				
ALT (3° APCH PATH)		420	610	760	1080	1400	1710	1800				



**NOTES**

CATEGORY	A	B	C	D
LNAV/VNAV	420 (348-1.9)			NOT APPLICABLE
LNAV	610 (537-2.9)			
CIRCLING	670 (597-2.4)		770 (697-4.0)	
ALTERNATE	(1097-4.4)		(1197-6.0)	

1. MAX IAS: INITIAL : 210KT.

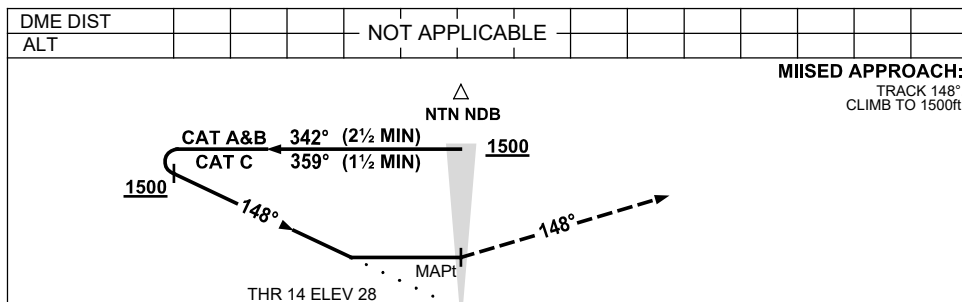
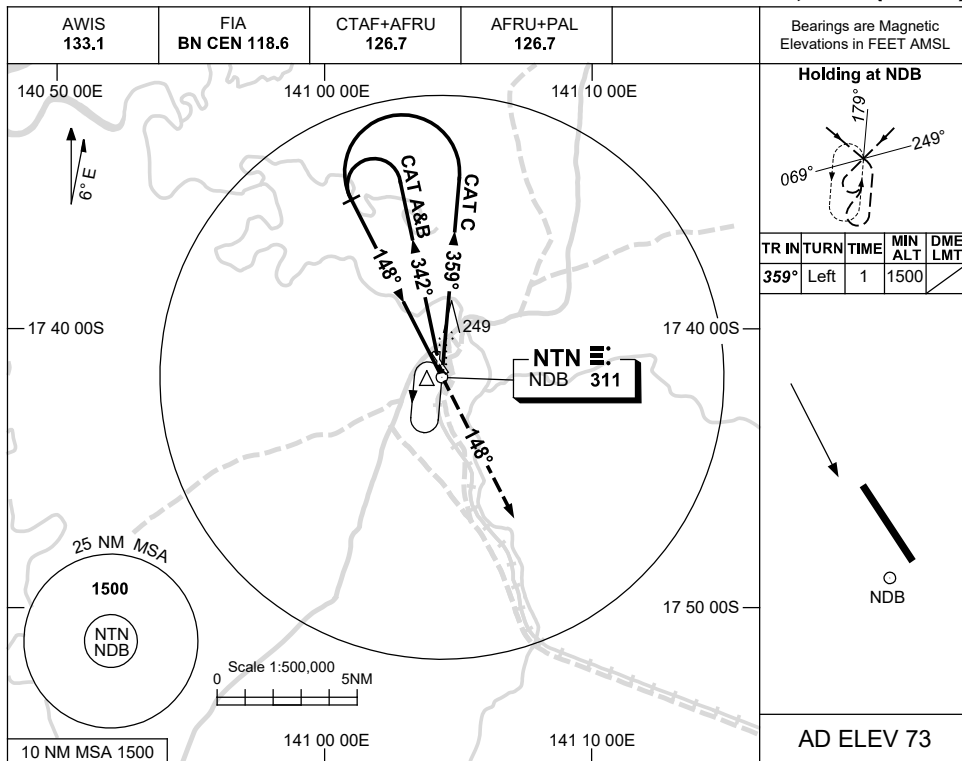
Changes: LNAV/VNAV, WPT NAMING CONVENTION, MAPt, Editorial.

NTNGN02-178

USE QNH

NDB RWY 14  
**NORMANTON, QLD (YNTN)**

21 MAR 2024



**NOTES**

CATEGORY	A	B	C	D
S-I NDB	660 (632-3.6)			NOT APPLICABLE
CIRCLING	670 (597-2.4)	770 (697-4.0)		
ALTERNATE	(1097-4.4)		(1197-6.0)	

1. MAX IAS:  
 INITIAL :  
 CAT C 210KT.

Changes: OUTBOUND TRK, NOTE 1, HOLDING, Editorial.

NTNNB01-178