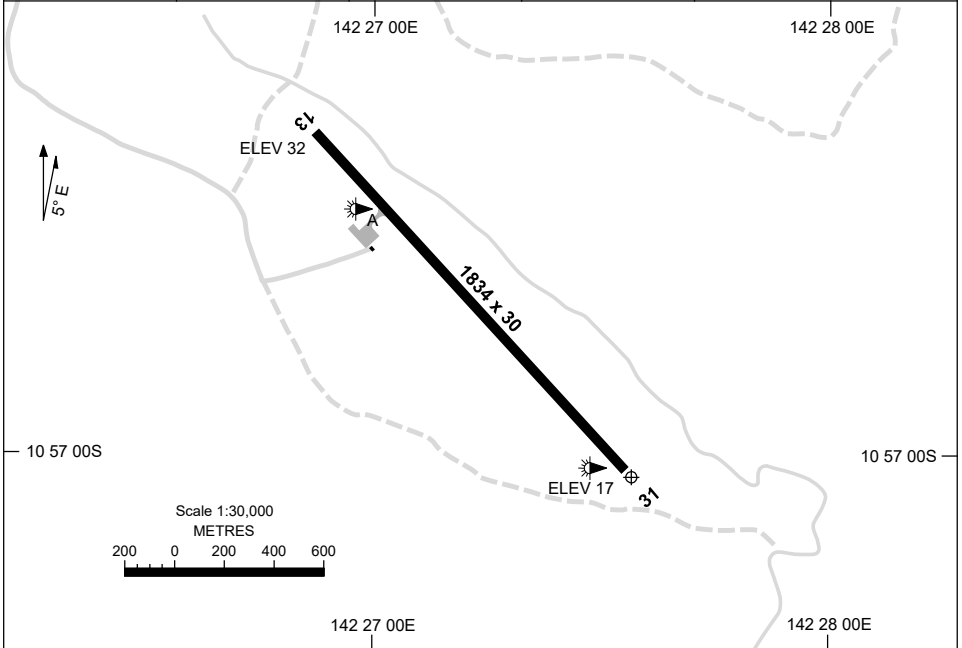


13 JUN 2024

AD ELEV 34  
10 57 03S 142 27 34E

**AERODROME CHART**  
**NORTHERN PENINSULA, QLD (YNPE)**

|                     |               |                 |  |
|---------------------|---------------|-----------------|--|
| FIA<br>BN CEN 120.3 | CTAF<br>126.5 | PAL+AA<br>126.6 | Bearings are Magnetic<br>Elevations in FEET AMSL |
|---------------------|---------------|-----------------|--|



|                          |   |
|--------------------------|---|
| <b>RWY</b>               | <b>AERODROME LIGHTING</b>   |
|                          | TAXIWAY : BLUE EDGE.<br>RL : PAL+AA 126.6, SDBY (15 SEC), 1 HR PN (ARO 0419 413 920). |
| <b>13</b> <sup>132</sup> | LIRL  |
| <sup>312</sup> <b>31</b> | LIRL  |

**NOTES**

1. FIA BN CEN 120.3 AVBL CIRCUIT AREA.
2. PAL REQUIRES THREE ONE SEC PULSES TO ACTIVATE.

Changes: THR ELEV.

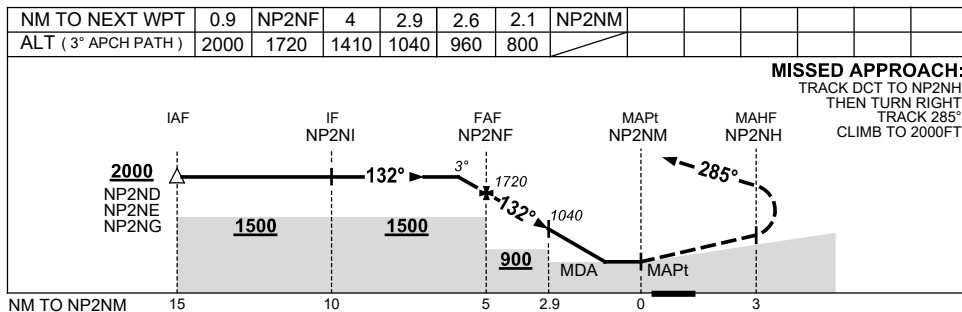
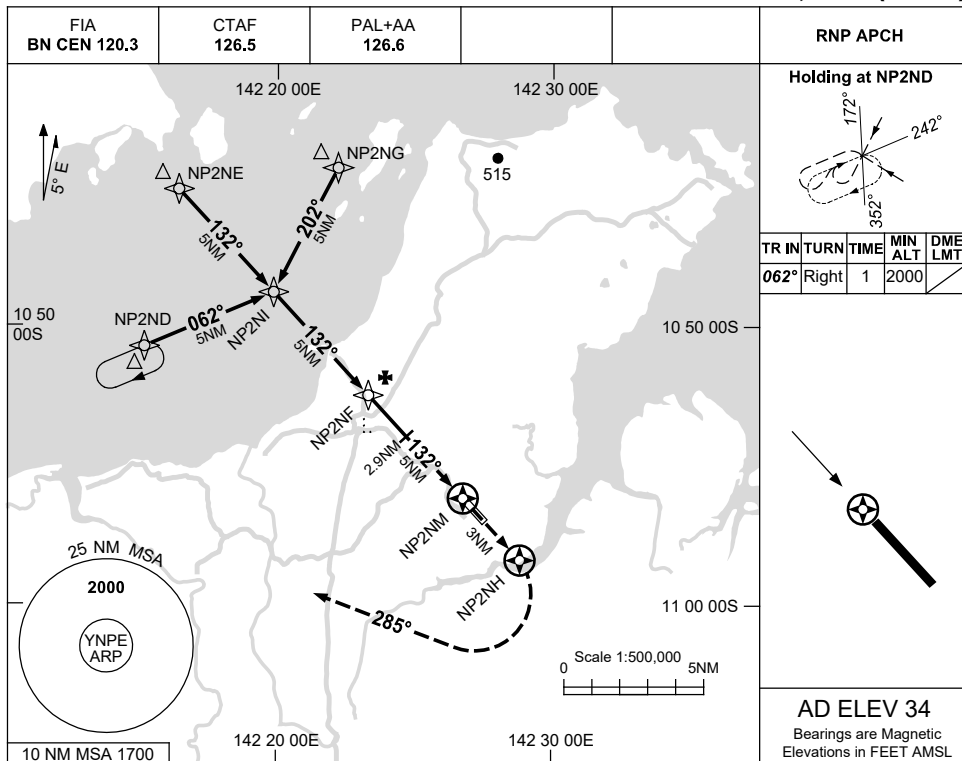
NPEAD01-179

USE QNH

RNP W

13 JUN 2024

**NORTHERN PENINSULA, QLD (YNPE)**



**NOTES**

| CATEGORY  | A                    | B | C                    | D                     |
|-----------|----------------------|---|----------------------|-----------------------|
|           |                      |   |                      | <b>NOT APPLICABLE</b> |
| CIRCLING  | <b>800</b> (766-2.4) |   | <b>960</b> (926-4.0) |                       |
| ALTERNATE | (1266-4.4)           |   | (1426-6.0)           |                       |

1. MAX IAS:  
INITIAL : 210KT.
2. PROC AND HOLDING  
PATTERN OVERLaid  
BY YHID NDB RWY 14  
SEPARATION NOT  
ASSURED.

Changes: 10NM MSA, DIST-ALT TABLE, WPT NAMING CONVENTION, NOTE 2.

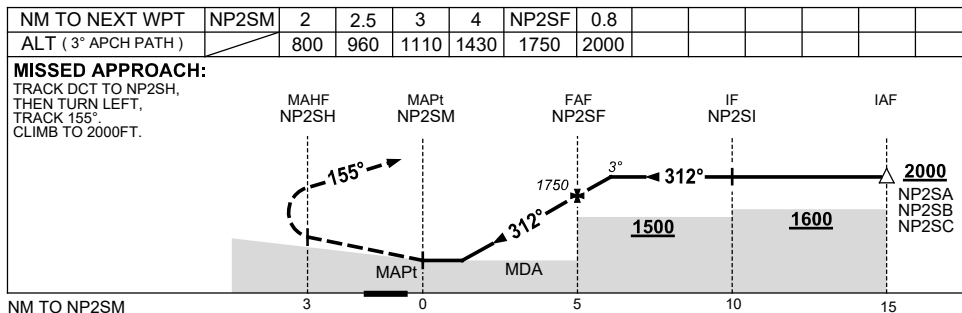
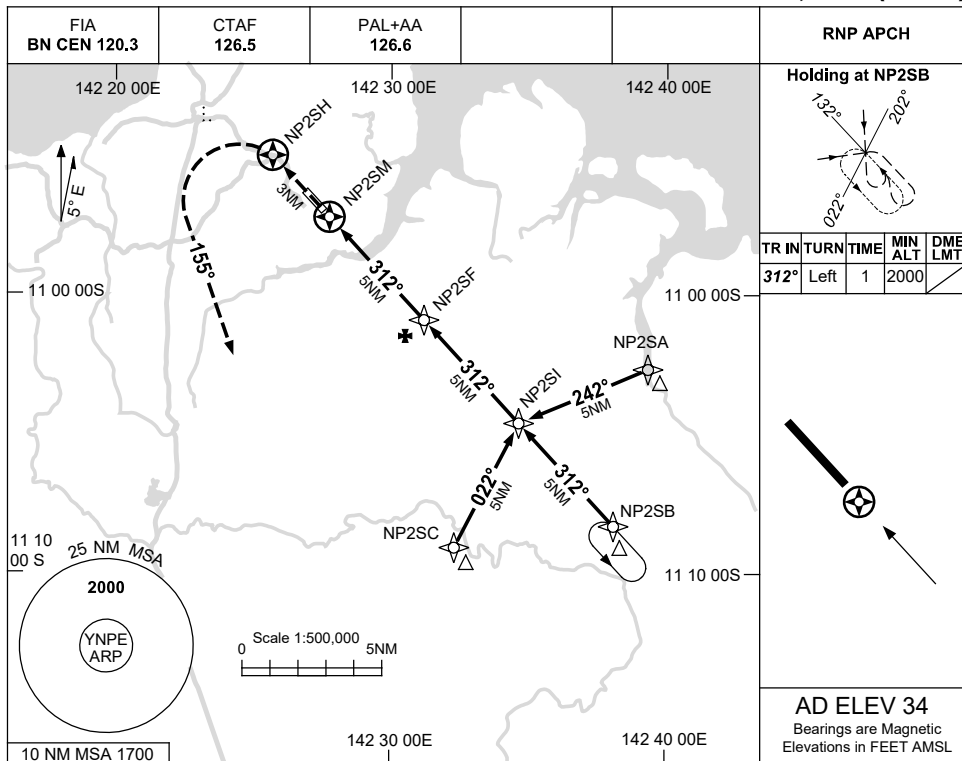
NPEGN01-179

USE QNH

RNP E

13 JUN 2024

**NORTHERN PENINSULA, QLD (YNPE)**



**NOTES**

| CATEGORY  | A             | B | C             | D              |
|-----------|---------------|---|---------------|----------------|
|           |               |   |               | NOT APPLICABLE |
| CIRCLING  | 800 (766-2.4) |   | 960 (926-4.0) |                |
| ALTERNATE | (1266-4.4)    |   | (1426-6.0)    |                |

1. MAX IAS:  
INITIAL : 210KT.

Changes: 10NM MSA, WPT NAMING CONVENTION.

NPEGN02-179