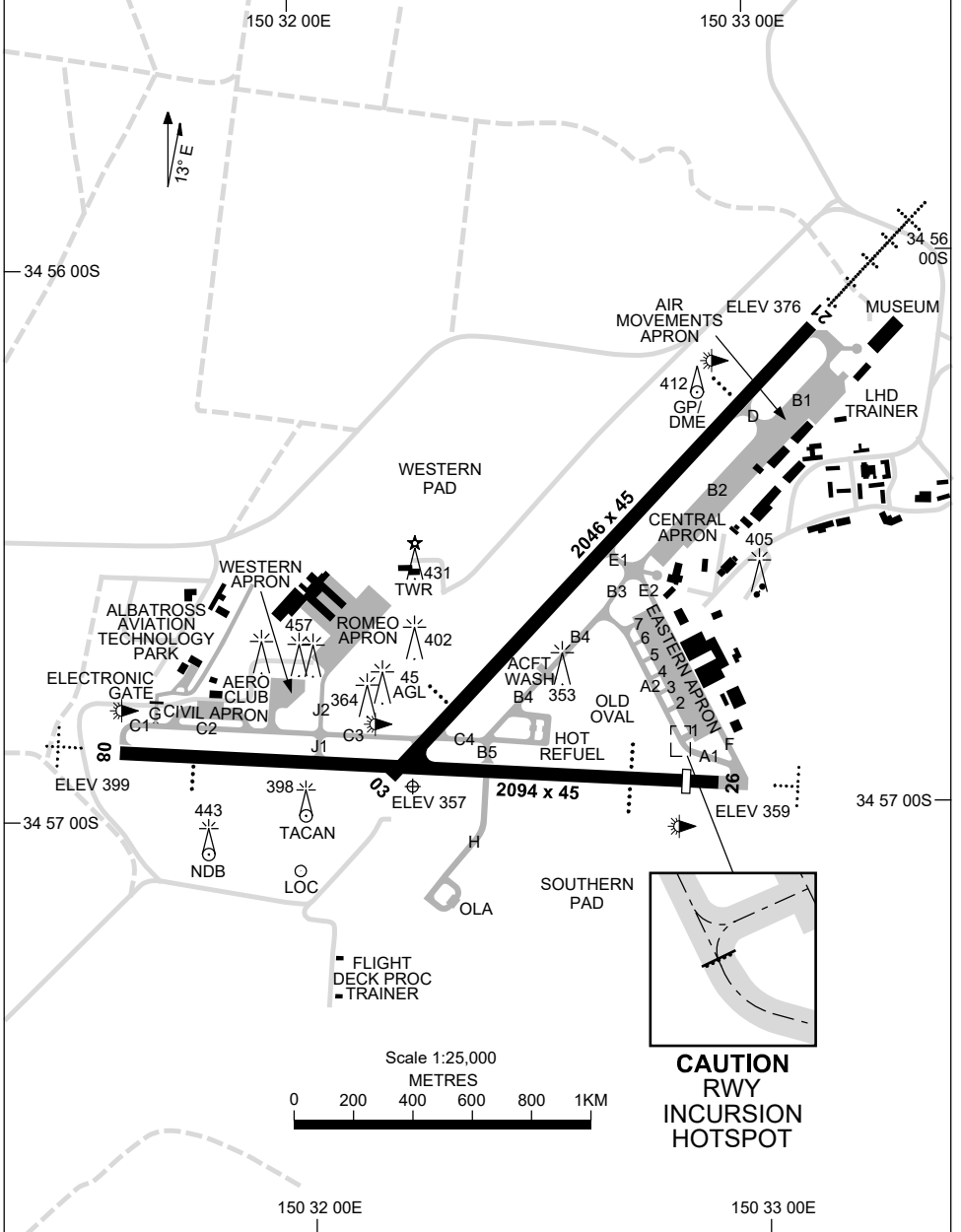


7 SEP 2023

AD ELEV 400
34 56 56S 150 32 13E

AERODROME CHART - Page 1
NOWRA, NSW (YSNW)

ATIS/AWIS 125.65 280.4 359	AFIS 118.85	ACD 128.35	SMC 135.85	TWR 118.85	APP 123.5	CTAF+AFRU (AH) 118.85	FIA (AH) ML CEN 121.2	PAL+AA 122.2	Bearings are Magnetic Elevations in FEET AMSL
-------------------------------	----------------	---------------	---------------	---------------	--------------	--------------------------	--------------------------	-----------------	--



Changes: Editorial.

SNWAD01-176

8 SEP 2022

AD ELEV 400
34 56 56S 150 32 13E

AERODROME CHART - Page 2
NOWRA, NSW (YSNW)

ATIS/AWIS 125.65 280.4 359	AFIS 118.85	ACD 128.35	SMC 135.85	TWR 118.85	APP 123.5	CTAF+AFRU (AH) 118.85	FIA (AH) ML CEN 121.2	PAL+AA 122.2	Bearings are Magnetic Elevations in FEET AMSL
-------------------------------	----------------	---------------	---------------	---------------	--------------	--------------------------	--------------------------	-----------------	--

--	--	--	--	--	--	--	--	--	--

RWY		AERODROME LIGHTING							
		ABN : ALTN W/G 10 SEC TAXIWAY : GREEN CENTRELINE RL : PAL+AA 122.2 (RWY 03/21) , MAN , SDBY , PTBL 30 MIN PN							
03 ⁰³²		PAPI LEFT SIDE 3.0° 52FT HIRL							
²¹² 21		PAPI RIGHT SIDE 3.0° 50FT HIRL HIAL - CAT I							
08 ⁰⁸²		PAPI RIGHT SIDE 3.0° 57FT HIRL SALS							
²⁶² 26		PAPI BOTH SIDES 3.0° 52FT HIRL SALS							

<p>NOTES</p>									
---------------------	--	--	--	--	--	--	--	--	--

Changes: NOTES.

SNWAD02-172

DME or GNSS ARRIVAL PROCEDURES NOWRA, NSW (YSNW)

16 JUN 2022

ATIS/AWIS 125.65 280.4 359	AFIS 118.85	SMC 135.85	TWR 118.85	APP 123.5	CTAF+AFRU (AH) 118.85	FIA (AH) ML CEN 121.2	PAL+AA 122.2	Bearings are Magnetic Elevations in FEET AMSL
-------------------------------	----------------	---------------	---------------	--------------	--------------------------	--------------------------	-----------------	--

**DME USING NWA DME
REFERENCE WAYPOINT NWA NDB**

AD ELEV 400

SECTOR A

MISSED APPROACH:
TURN AS APPROPRIATE,
TRACK 146°. CLIMB TO 4300FT.

NM TO NWA NDB	25	15	10	7	5	2	0													
CIRCLING MINIMA	A,B: 1320-2.4		C: 1680-4.0		D: N/A															
NM TO NWA NDB	9.7	9	8	7	6	5	4	3	2	1.5	1	0.4								
ALT (3° APCH PATH)	4300	4070	3760	3440	3120	2800	2480	2160	1840	1680	1530	1320								

SECTOR B

MISSED APPROACH:
TURN AS APPROPRIATE,
TRACK 303°. CLIMB TO 4300FT.

NM TO NWA NDB	25	15	7	5	2	0														
CIRCLING MINIMA	A,B: 1320-2.4		C: 1680-4.0		D: N/A															
NM TO NWA NDB	3.9	3	2	1.9	1	0.8														
ALT (3° APCH PATH)	2300	2020	1700	1680	1380	1320														

SECTOR C

MISSED APPROACH:
TURN AS APPROPRIATE,
TRACK 090°. CLIMB TO 4300FT.

NM TO NWA NDB	25	15	10	8	6	5	4	3	2	1.3	1									
CIRCLING MINIMA	A,B: 1590-2.4		C: 1680-4.0		D: N/A															
NM TO NWA NDB	9.5	9	8	7	6	5	4	3	2	1.3	1									
ALT (3° APCH PATH)	4300	4130	3810	3490	3170	2860	2540	2220	1900	1680	1590									

Changes: PAL+AA.

SNWDG01-171

**STANDARD INSTRUMENT DEPARTURE (SID)
NOWRA FIVE DEPARTURE (RADAR)
NOWRA, NSW (YSNW)**

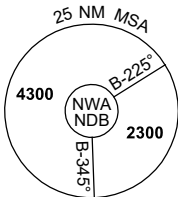
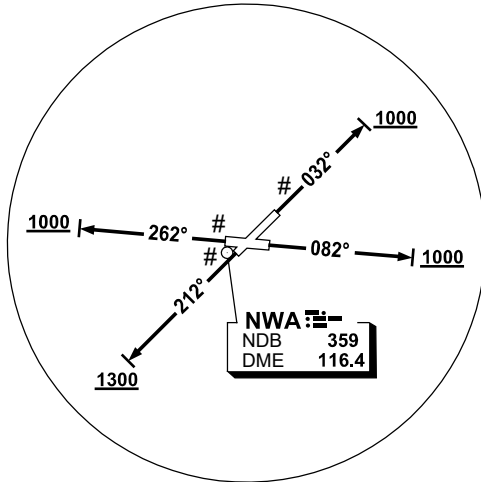
1 DEC 2022

ATIS/AWIS 125.65 280.4 359	AFIS 118.85	SMC 135.85	TWR 118.85	APP 123.5	CTAF+AFRU (AH) 118.85	FIA (AH) ML CEN 121.2	PAL+AA 122.2	Bearings are Magnetic Elevations in FEET AMSL
-------------------------------	----------------	---------------	---------------	--------------	--------------------------	--------------------------	-----------------	--

NOT TO SCALE



**# CAUTION
TREES IN
RWY 03, 21, 26
DEP AREA.**



10 NM MSA 3700

NOWRA FIVE DEPARTURE (RADAR)

RWY 03

- GRAD 4.8% to 2600ft then 3.3%
- Track 032°
- AT or ABV 1000ft but not before DER, turn to assigned heading or track

RWY 08

- GRAD 3.8% to 2600ft then 3.3%
- Track 082°
- AT or ABV 1000ft but not before DER, turn to assigned heading or track

RWY 21

- GRAD 4.3% to 1300ft then 3.3%
- Track 212°
- AT or ABV 1300ft but not before DER, turn to assigned heading or track

RWY 26

- GRAD 4.7% to 1300ft then 3.3%
- Track 262°
- AT or ABV 1000ft but not before DER, turn to assigned heading or track

COMMUNICATIONS FAILURE PROCEDURE

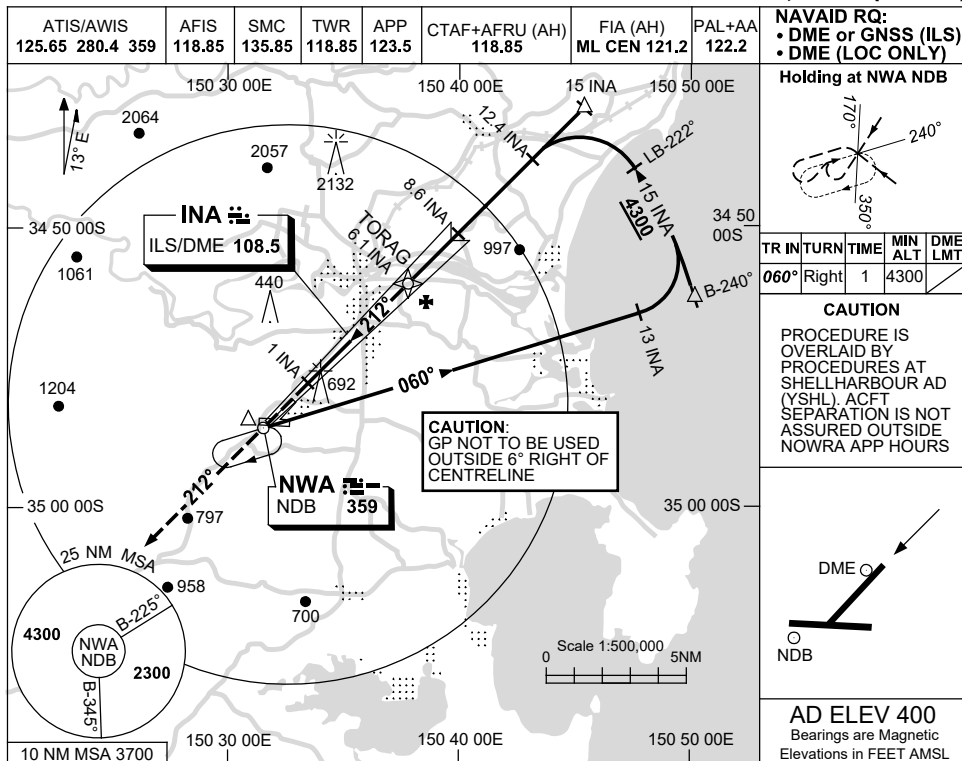
On recognition of communications failure

- Squawk 7600
- Maintain last assigned vector for two minutes, and
- CLIMB IF NECESSARY TO MINIMUM SAFE ALTITUDE, to maintain terrain clearance, then
- Proceed in accordance with the latest ATC route clearance acknowledged.

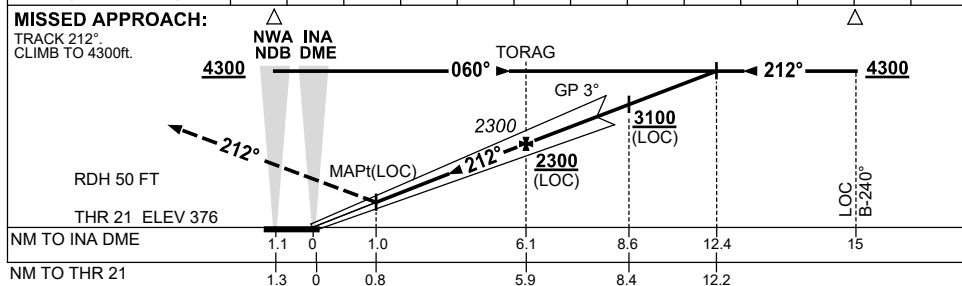
USE QNH

ILS-Z or LOC-Z RWY 21
NOWRA, NSW (YSNW)

21 MAR 2024



NM TO INA DME	1.8	2	3	4	5	6.1	7	8	9	10	11	12	12.4
ALT (3° APCH PATH)	930	1000	1320	1640	1960	2300	2590	2910	3230	3550	3870	4180	4300



NOTES

CATEGORY	A	B	C	D
S-I ILS/DME*		700 (324)	1.1 (VIS 0.8 WITH ACTUAL QNH)	
S-I LOC/DME		930 (554-2.4)		
CIRCLING	1320 (920-2.4)		1680 (1280-4.0)	1810 (1410-5.0)
ALTERNATE	(1420-4.4)		(1780-6.0)	(1910-7.0)

1. ACFT MAY BE RADAR VECTORED TO FNA.

*2. AT DA, RAD ALT WILL INDICATE APPROX 400ft WHEN FCST QNH USED, DUE TO TERRAIN.

Changes: VIS.

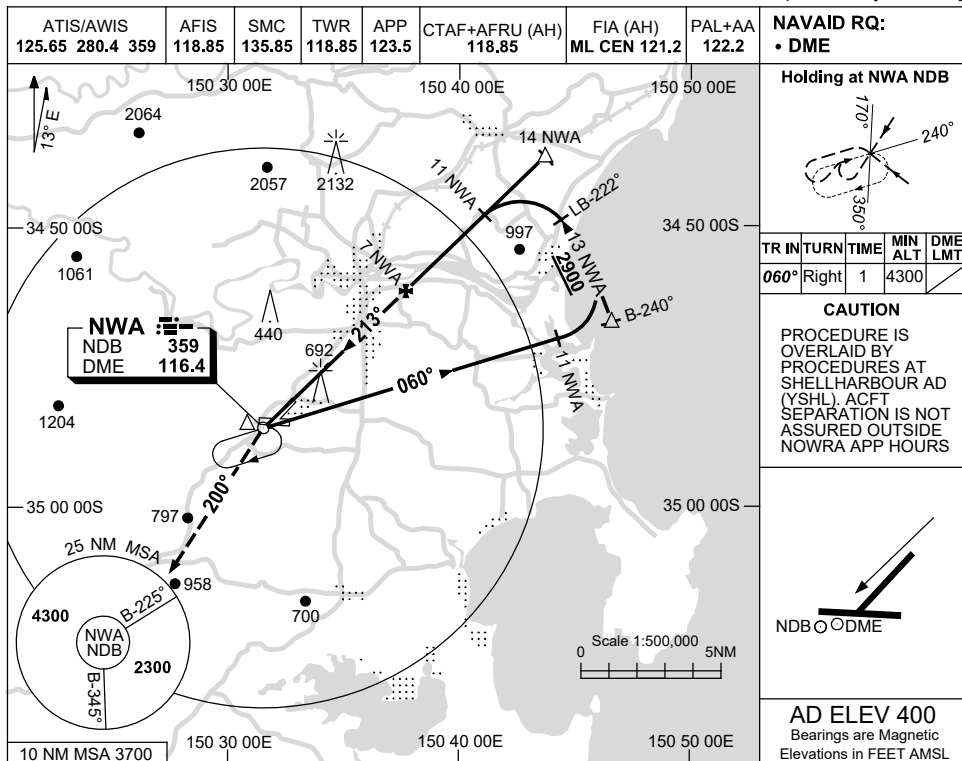
SNWII01-178

USE QNH

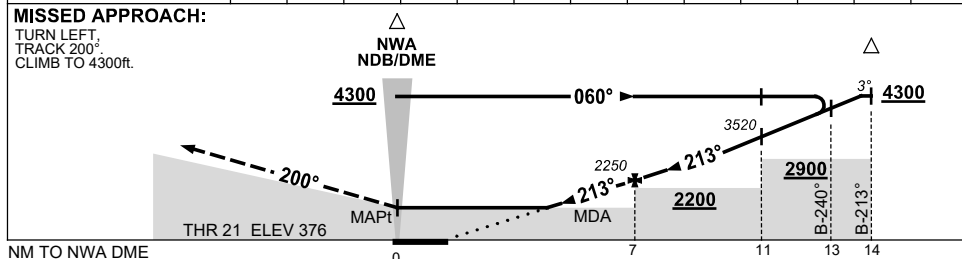
NDB RWY 21

NOWRA, NSW (YSNW)

21 MAR 2024



NM TO NWA DME	3.3	4	5	6	7	8	9	10	11	12	13	13.4	
ALT (3° APCH PATH)	1060	1300	1610	1930	2250	2570	2890	3210	3520	3840	4160	4300	



NOTES

CATEGORY	A	B	C	D
S-I NDB/DME	1060 (684-3.2)			NOT APPLICABLE
CIRCLING	1320 (920-2.4)	1680 (1280-4.0)		
ALTERNATE	(1420-4.4)		(1780-6.0)	

Changes: MINIMA, VIS, DIST ALT TABLE.

SNWNB01-178

