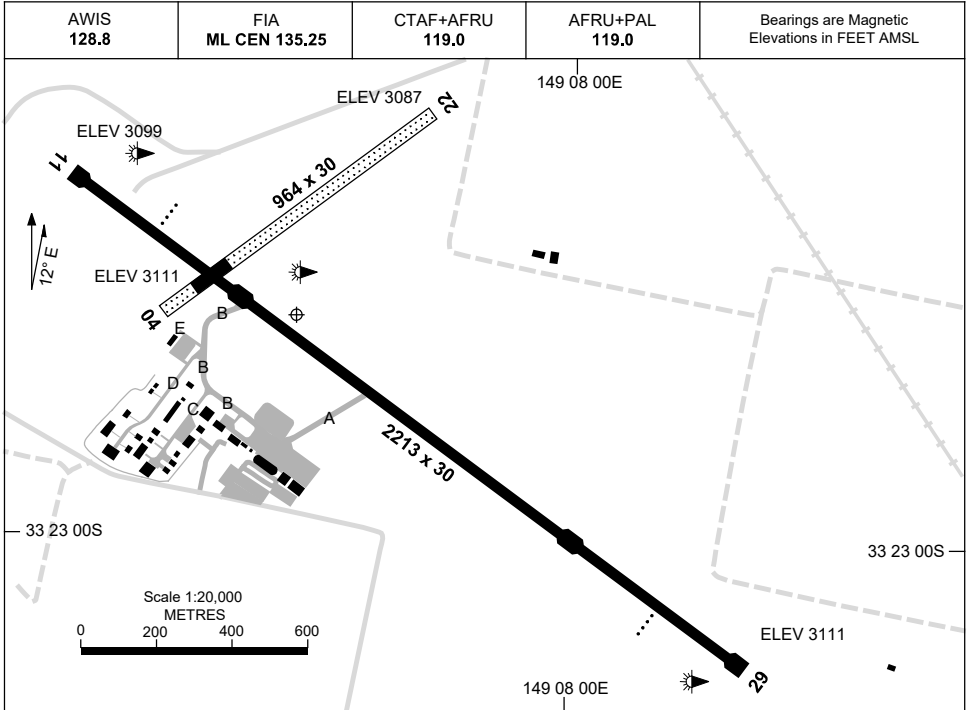


13 JUN 2024

AD ELEV 3112  
33 22 41S 149 07 32E

AERODROME CHART  
**ORANGE, NSW (YORG)**



<b>AERODROME LIGHTING</b>	
<b>RWY</b>	TAXIWAY : BLUE EDGE RL : AFRU+PAL 119.0 , SDBY (15 SEC)
<b>11</b> <small>114</small>	PAPI 3.0° 48.5FT LIRL RTIL
<small>294</small> <b>29</b>	PAPI 3.0° 48.5FT LIRL RTIL
<b>04</b> <small>041</small>	NIL
<small>221</small> <b>22</b>	NIL

**NOTES**

1. AWIS FREQ RQ ONE SEC TRANSMIT PULSE TO ACT.

Changes: TWY E, APRON, RWY 04/22 LEN, Editorial.

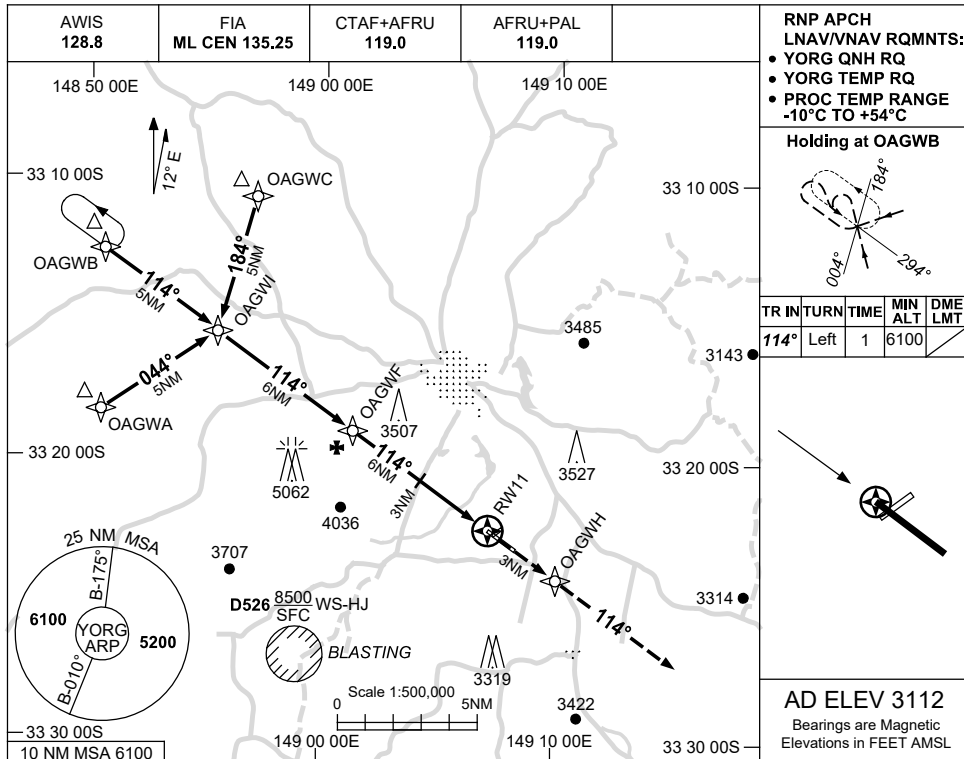
ORGAD01-179

USE QNH

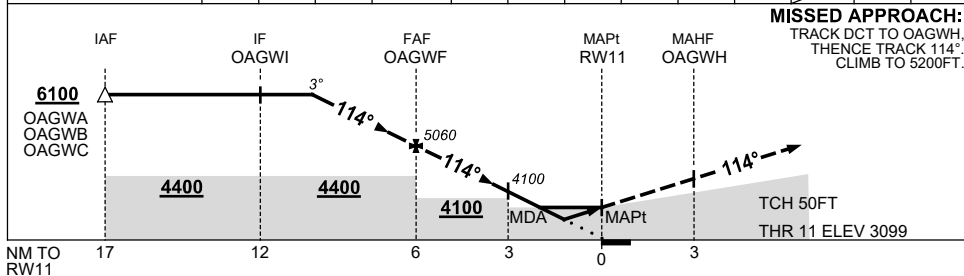
RNP RWY 11

ORANGE, NSW (YORG)

15 JUN 2023



NM TO NEXT WPT	3.3	2	1	OAGWF	5	4	3	2	1.7	1.1	RW11		
ALT (3° APCH PATH)	6100	5700	5380	5060	4740	4420	4100	3790	3700	3510			



**MISSED APPROACH:**  
TRACK DCT TO OAGWH,  
THENCE TRACK 114°.  
CLIMB TO 5200FT.

NOTES

CATEGORY	A	B	C	D
LNAV/VNAV		3510 (411-2.3)		NOT APPLICABLE
LNAV		3700 (601-3.4)		
CIRCLING	3810 (698-2.4)		4310 (1198-4.0)	
ALTERNATE	(1198-4.4)		(1698-6.0)	

1. MAX IAS:  
HOLDING: 210KT.  
INITIAL : 210KT.

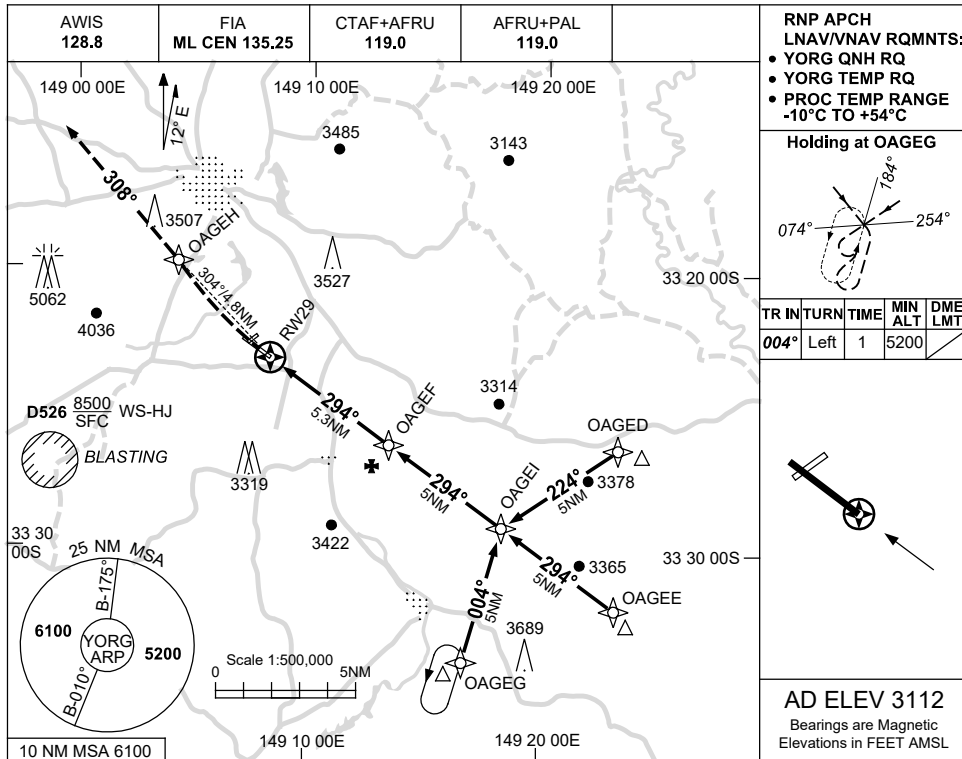
Changes: CHART TITLE, PBN SPECIFICATION BOX, Editorial.

ORGGN01-175

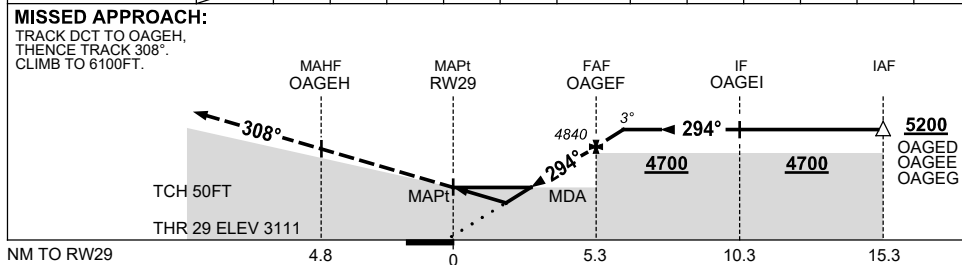
USE QNH

RNP RWY 29  
**ORANGE, NSW (YORG)**

15 JUN 2023



NM TO NEXT WPT	RW29	1.2	1.7	2	3	4	OAGEF	1	1.1			
ALT (3° APCH PATH)		3540	3700	3800	4120	4430	4840	5160	5200			



**NOTES**

CATEGORY	A	B	C	D
LNAV/VNAV		3540 (429-2.4)		NOT APPLICABLE
LNAV		3700 (588-3.3)		
CIRCLING	3810 (698-2.4)		4310 (1198-4.0)	
ALTERNATE	(1198-4.4)		(1698-6.0)	

1. MAX IAS :  
 HOLDING : 210KT.  
 INITIAL : 210KT.

Changes: CHART TITLE, PBN SPECIFICATION BOX, Editorial.

ORGGN02-175