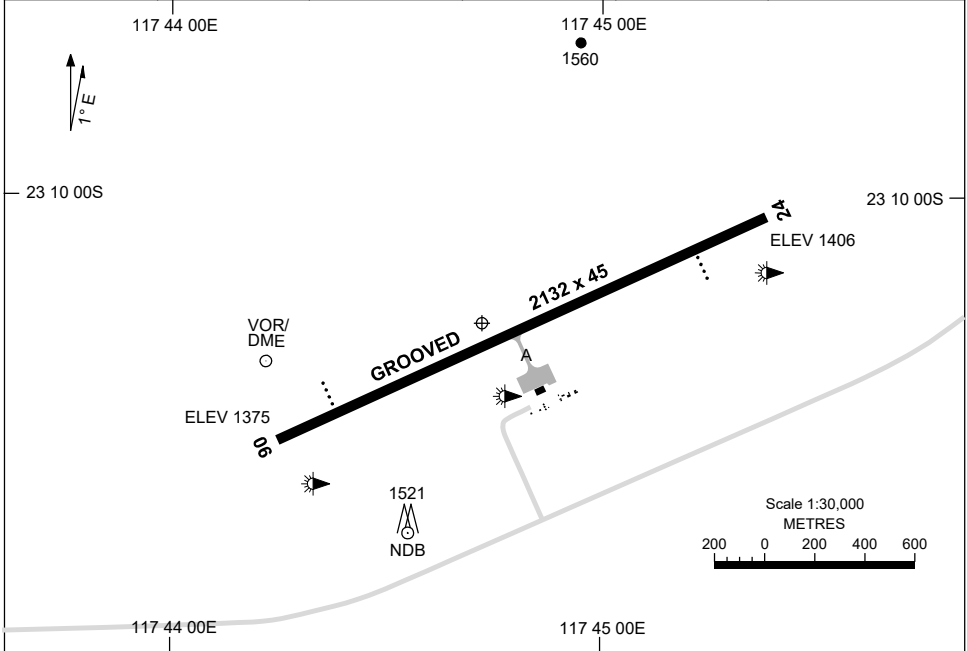


13 JUN 2024

AD ELEV 1406
23 10 16S 117 44 43E

AERODROME CHART
PARABURDOO, WA (YPBO)

AWIS 135.6	FIA ML CEN 125.7	CTAF+AFRU 126.8	AFRU+PAL 126.8		Bearings are Magnetic Elevations in FEET AMSL
---------------	---------------------	--------------------	-------------------	--	--



AERODROME LIGHTING	
RWY	TAXIWAY : BLUE EDGE RL : AFRU+PAL 126.8 , SDBY (10 SEC) , PTBL (120 MIN PN)
06 ⁰⁶⁴	PAPI 3.0° 50FT LIRL PTBL
²⁴⁴ 24	PAPI 3.0° 50FT LIRL PTBL

NOTES

Changes: Editorial.

PBOAD01-179

DME or GNSS ARRIVAL PROCEDURES PARABURDOO, WA (YPBO) Page 1

23 MAR 2023

AWIS 135.6	FIA ML CEN 125.7	CTAF+AFRU 126.8	AFRU+PAL 126.8		Bearings are Magnetic Elevations in FEET AMSL
---------------	---------------------	--------------------	-------------------	--	--

25 NM MSA
5200
4100

**DME USING PBO DME
REFERENCE WAYPOINT PBO VOR**

PBO VOR/DME 116.9
PBO NDB 278

* NO CIRCLING SOUTH OF RWY 06/24 BEYOND 3NM.

AD ELEV 1406

WEBBA TO PBO

PBO VOR or NDB

VOR or NDB

MISSED APPROACH:

TRACK 159°.
CLIMB TO 4100FT.

NM FM VOR	25	15	13	10	9	6	4	0						
CIRCLING MINIMA	A,B: 2340-2.4			C: 2500-4.0			D: 2570-5.0							
NM FM VOR	10.7	10	9	8	7	6	5	4	3	2.4	2.2	2	1.7	
ALT (3° APCH PATH)	5200	4980	4660	4350	4030	3710	3390	3070	2750	2570	2500	2440	2340	

NWN TO PBO

PBO VOR or NDB

VOR or NDB

MISSED APPROACH:

CLIMB ON TRACK TO
4100FT.

NM FM VOR	25	15					8	6	5	4	3	0				
CIRCLING MINIMA	A,B: 2340-2.4			C: 2500-4.0			D: 2570-5.0									
NM FM VOR	7.2	6	5	4	3	2.4	2.2	2	1.7							
ALT (3° APCH PATH)	4100	3710	3390	3070	2750	2570	2500	2440	2340							

SECTOR A

PBO VOR or NDB

VOR or NDB

MISSED APPROACH:

TURN LEFT.
TRACK 110°.
CLIMB TO 5200FT.

MAX IAS: 180KT UNTIL
ESTABLISHED ON 110°

NM FM VOR	25	15	13	10	6	4	0							
CIRCLING MINIMA	A,B: 2470-2.4			C: 2500-4.0			D: 2570-5.0							
NM FM VOR	10.2	10	9	8	7	6	5	4	3	1.9	1.7	1.6		
ALT (3° APCH PATH)	5200	5140	4830	4500	4190	3870	3550	3230	2920	2570	2500	2470		

Changes: UNICOM REMOVED.

PBODG01-174

DME or GNSS ARRIVAL PROCEDURES PARABURDOO, WA (YPBO) Page 2

23 MAR 2023

AWIS 135.6	FIA ML CEN 125.7	CTAF+AFRU 126.8	AFRU+PAL 126.8		Bearings are Magnetic Elevations in FEET AMSL
---------------	---------------------	--------------------	-------------------	--	--

25 NM MSA
5200
R-299°
B-179°
PBO VOR/NDB
R-085°
B-265°
4100

**DME USING PBO DME
REFERENCE WAYPOINT PBO VOR**

PBO VOR/DME 116.9
PBO NDB 278
3 NM
NO CIRCLING

10 NM MSA 4600

* NO CIRCLING SOUTH OF RWY 06/24 BEYOND 3NM.

AD ELEV 1406

SECTOR B

PBO VOR or NDB
035° 030°

VOR or NDB
4100
3100 3140
MDA
MAPt
5200
3° 030°

MISSED APPROACH:
TURN AS APPROPRIATE,
TRACK 030°. CLIMB TO 5200FT.

NM FM VOR	25	15				6	5	3	0										
CIRCLING MINIMA	A,B: 2340-2.4			C: 2500-4.0			D: 2570-5.0												
NM FM VOR	6	5	4	3	2	1.2	1	0.5											
ALT (3° APCH PATH)	4100	3770	3450	3140	2820	2570	2500	2340											

SECTOR C

PBO VOR or NDB
106° 066°

VOR or NDB
4100
3000 2700
MDA
MAPt
5200
3° 056°

MISSED APPROACH:
TURN LEFT.
TRACK 056°. CLIMB TO 5200FT.

NM FM VOR	25	15				7	6	5	3	0									
CIRCLING MINIMA	A,B: 2430-2.4			C: 2500-4.0			D: 2570-5.0												
NM FM VOR	6.7	6	5	4	3	1.9	1.7	1.5											
ALT (3° APCH PATH)	4100	3860	3540	3230	2910	2570	2500	2430											

Changes: UNICOM REMOVED.

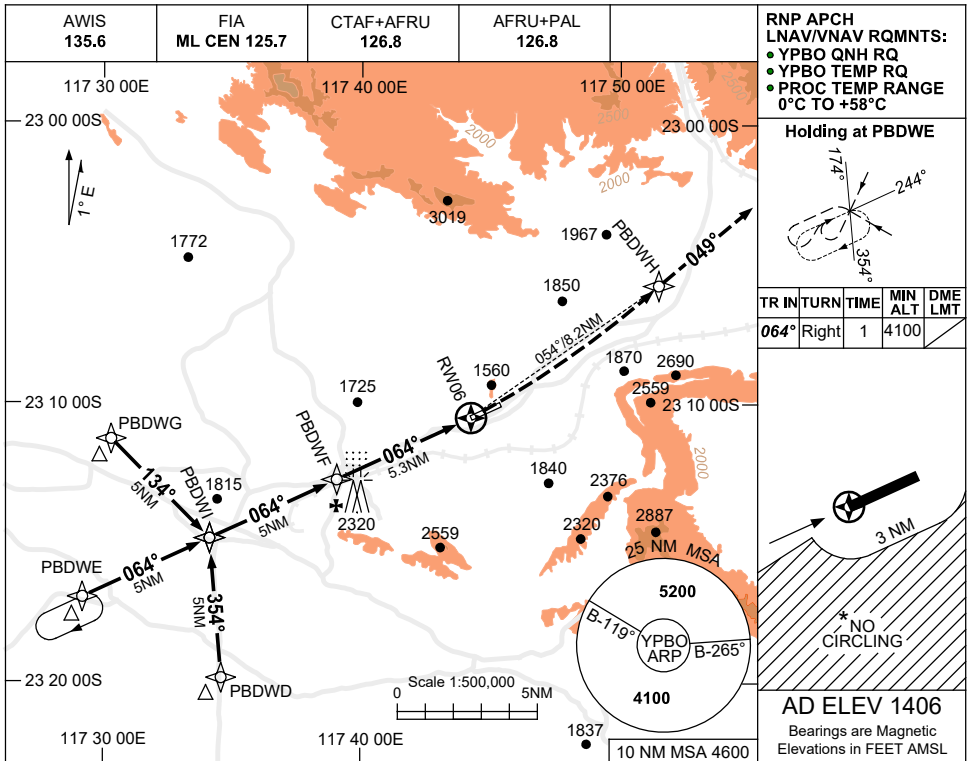
PBODG02-174

USE QNH

RNP RWY 06

PARABURDOO, WA (YPBO)

30 NOV 2023

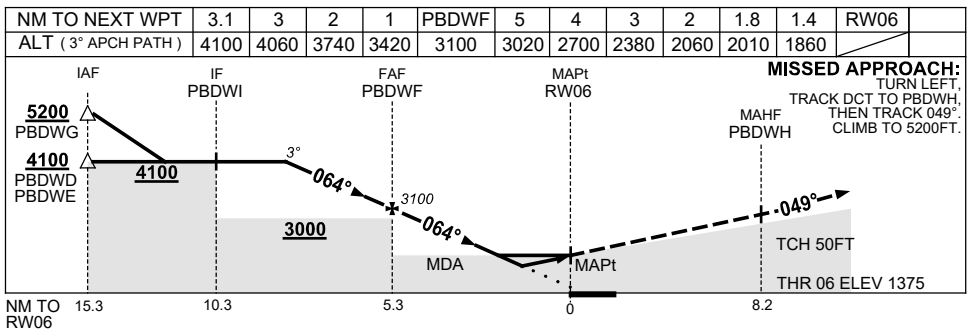


RNP APCH LNAV/VNAV RQMTS:
 ● YPBO QNH RQ
 ● YPBO TEMP RQ
 ● PROC TEMP RANGE 0°C TO +58°C

Holding at PBDWE

TR IN	TURN	TIME	MIN ALT	DME LMT
064°	Right	1	4100	

AD ELEV 1406
 Bearings are Magnetic
 Elevations in FEET AMSL



NOTES

CATEGORY	A	B	C	D
LNAV/VNAV		1860 (485-2.7)		
LNAV		2010 (635-3.6)		
CIRCLING *	2340 (934-2.4)		2500 (1094-4.0)	2570 (1164-5.0)
ALTERNATE	(1434-4.4)		(1594-6.0)	(1664-7.0)

- MAX IAS:
 INITIAL : 210KT,
 MAP TURN: 240KT.
- NO CIRCLING S OF RWY 06/24 BEYOND 3NM.
- COLOUR: SEE SPEC NOTICES.

Changes: CHART TITLE, PBN SPECIFICATION BOX, Editorial.

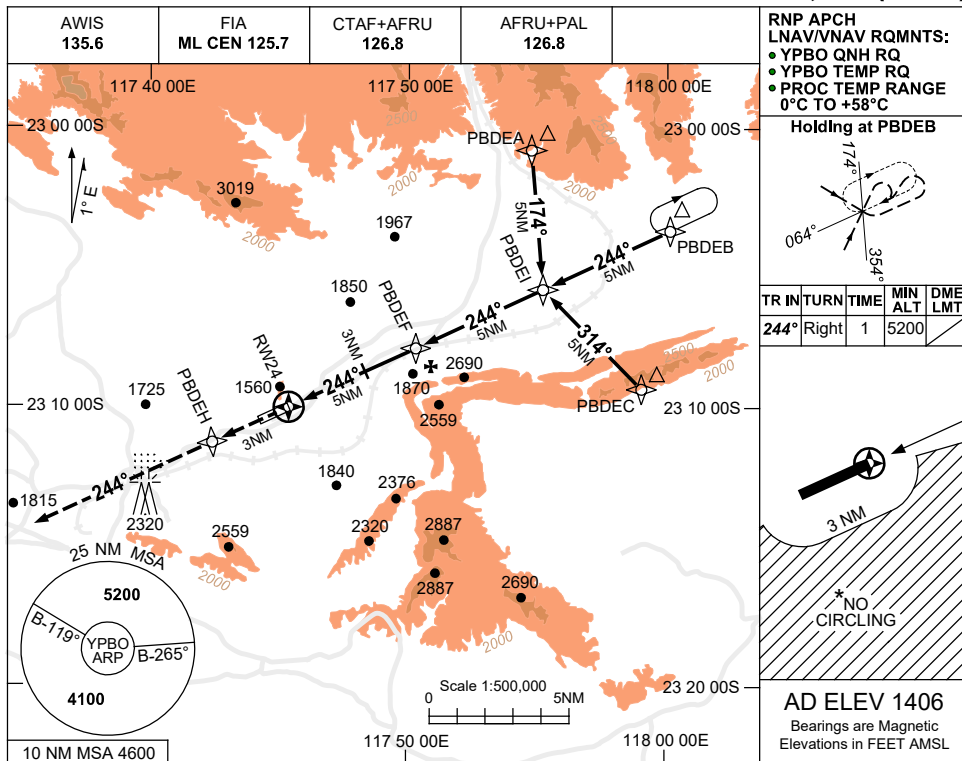
PBOGN01-177

USE QNH

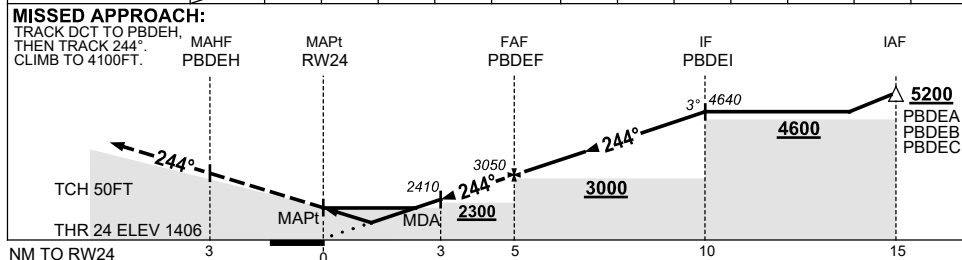
RNP RWY 24

30 NOV 2023

PARABURDOO, WA (YPBO)



NM TO NEXT WPT	RW24	1.4	2	3	4	PBDEF	1	2	3	4	PBDEI		
ALT (3° APCH PATH)		1910	2090	2410	2730	3050	3370	3690	4000	4320	4640		



NOTES

CATEGORY	A	B	C	D
LNAV/VNAV		1910 (504-2.9)		
LNAV		2090 (684-3.9)		
CIRCLING *	2340 (934-2.4)		2500 (1094-4.0)	2570 (1164-5.0)
ALTERNATE	(1434-4.4)		(1594-6.0)	(1664-7.0)

1. MAX IAS: INITIAL : 210KT.
- * 2. NO CIRCLING S OF RWY 06/24 BEYOND 3NM.
3. COLOUR: SEE SPEC NOTICES.

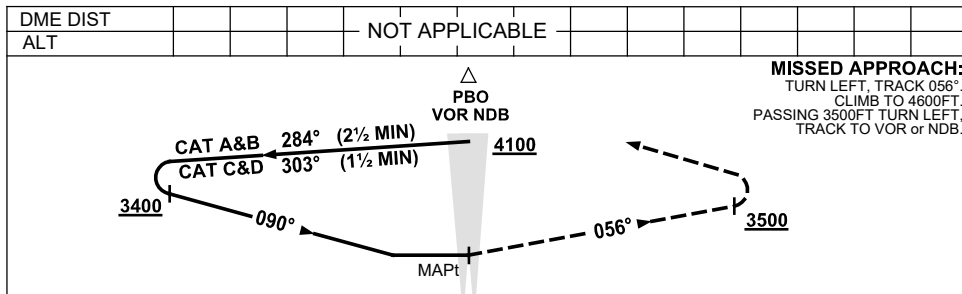
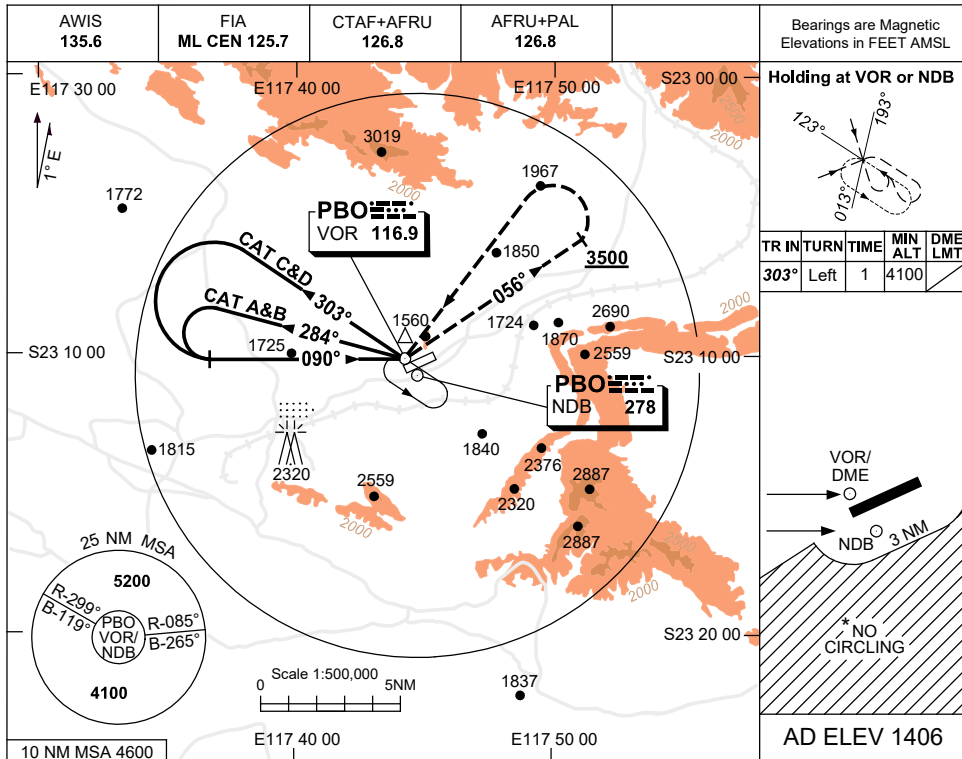
Changes: CHART TITLE, PBN SPECIFICATION BOX, Editorial.

PBOGN02-177

USE QNH

NDB-A or VOR-A
PARABURDOO, WA (YPBO)

23 MAR 2023



NOTES

CATEGORY	A	B	C	D
CIRCLING *	2340 (934-2.4)		2500 (1094-4.0)	2570 (1164-5.0)
ALTERNATE	(1434-4.4)		(1594-6.0)	(1664-7.0)

1. MAX IAS:
 INITIAL : 210KT.
 MAP TURN: 210KT.
 HOLDING : 210KT.
- * 2. NO CIRCLING S OF
 RWY 06/24 BEYOND
 3NM.
3. COLOUR: SEE
 SPEC NOTICES.

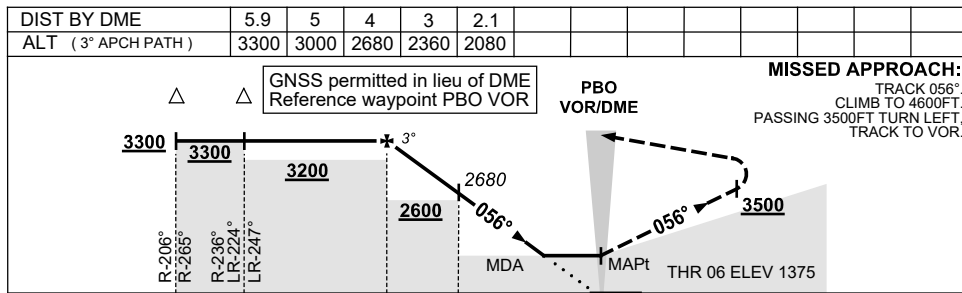
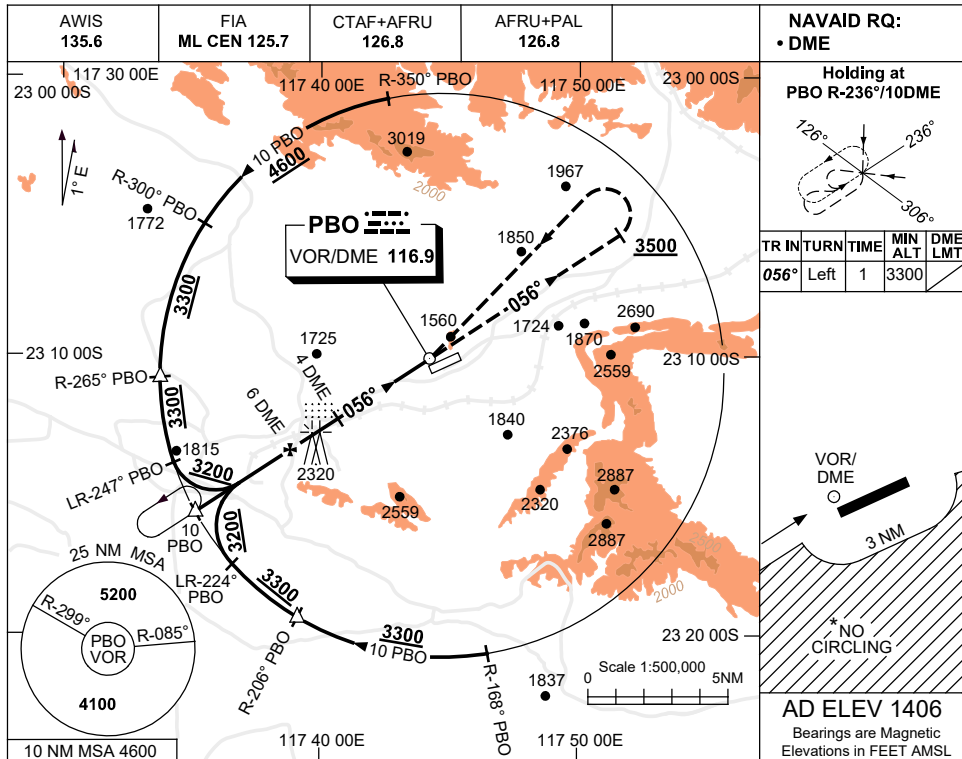
Changes: UNICOM REMOVED.

PBONB01-174

USE QNH

VOR RWY 06
PARABURDOO, WA (YPBO)

23 MAR 2023



NOTES

CATEGORY	A	B	C	D
S-I VOR/DME	2080 (705-4.0)			
CIRCLING *	2340 (934-2.4)	2500 (1094-4.0)	2570 (1164-5.0)	
ALTERNATE	(1434-4.4)	(1594-6.0)	(1664-7.0)	

1. MAX IAS:
 HOLDING: 210KT.
 INITIAL : 210KT.
- * 2. NO CIRCLING S OF RWY 06/24 BEYOND 3NM.
3. COLOUR: SEE SPEC NOTICES.

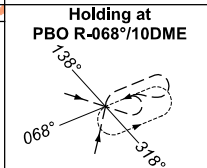
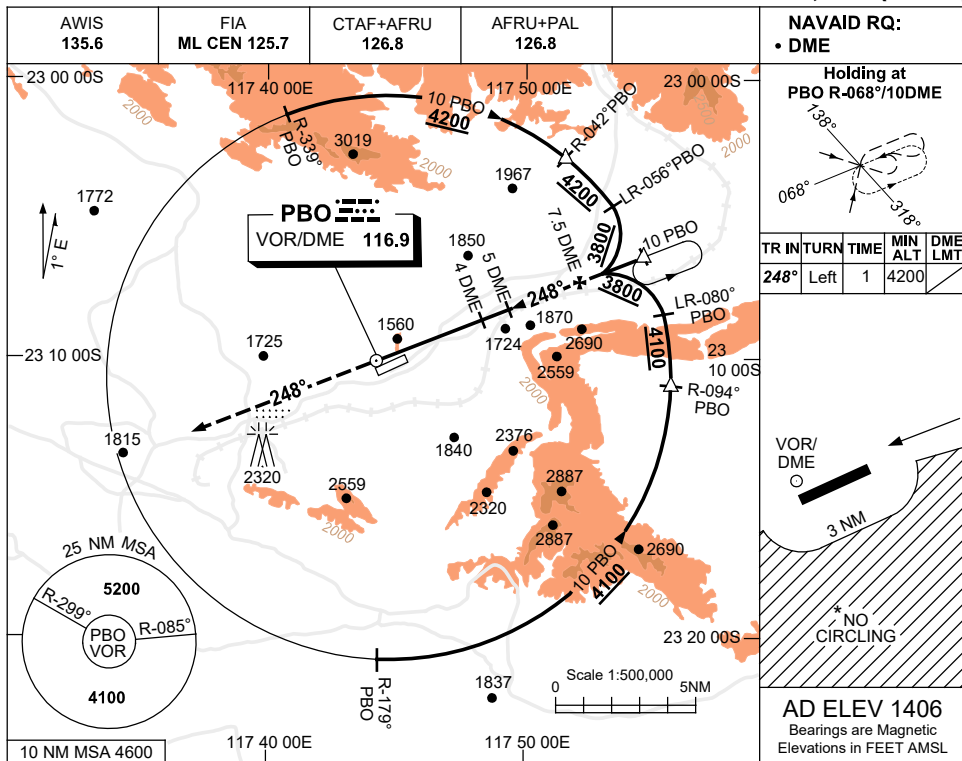
Changes: UNICOM REMOVED.

PBOV001-174

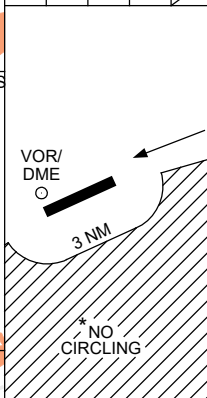
USE QNH

VOR RWY 24
PARABURDOO, WA (YPBO)

23 MAR 2023

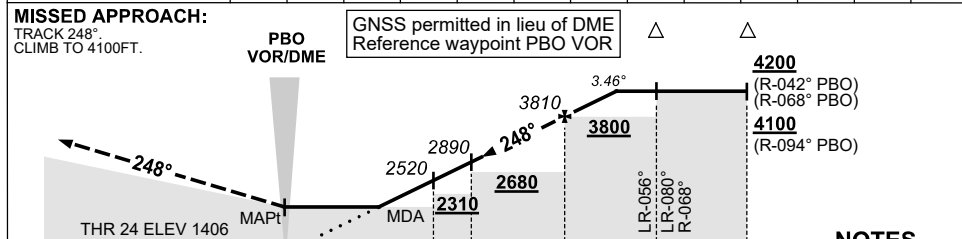


TR IN	TURN	TIME	MIN ALT	DME LMT
248°	Left	1	4200	



AD ELEV 1406
 Bearings are Magnetic
 Elevations in FEET AMSL

DIST BY DME	2.9	3	4	5	6	7	7.5	8	8.6				
ALT (3.46° APCH PATH)	2100	2150	2520	2890	3260	3620	3810	3990	4200				



NOTES

- MAX IAS:
 HOLDING: 210KT.
 INITIAL : 210KT.
- NO CIRCLING S OF RWY 06/24 BEYOND 3NM.
- APCH PATH ANGLE DOES NOT COINCIDE WITH PAPl ON GLIDE SLOPE INDICATION.
- COLOUR: SEE SPEC NOTICES.

CATEGORY	A	B	C	D
S-I VOR/DME	2100 (694-3.5)			
CIRCLING*	2340 (934-2.4)	2500 (1094-4.0)	2570 (1164-5.0)	
ALTERNATE	(1434-4.4)	(1594-6.0)	(1664-7.0)	

Changes: UNICOM REMOVED.

PBOV002-174