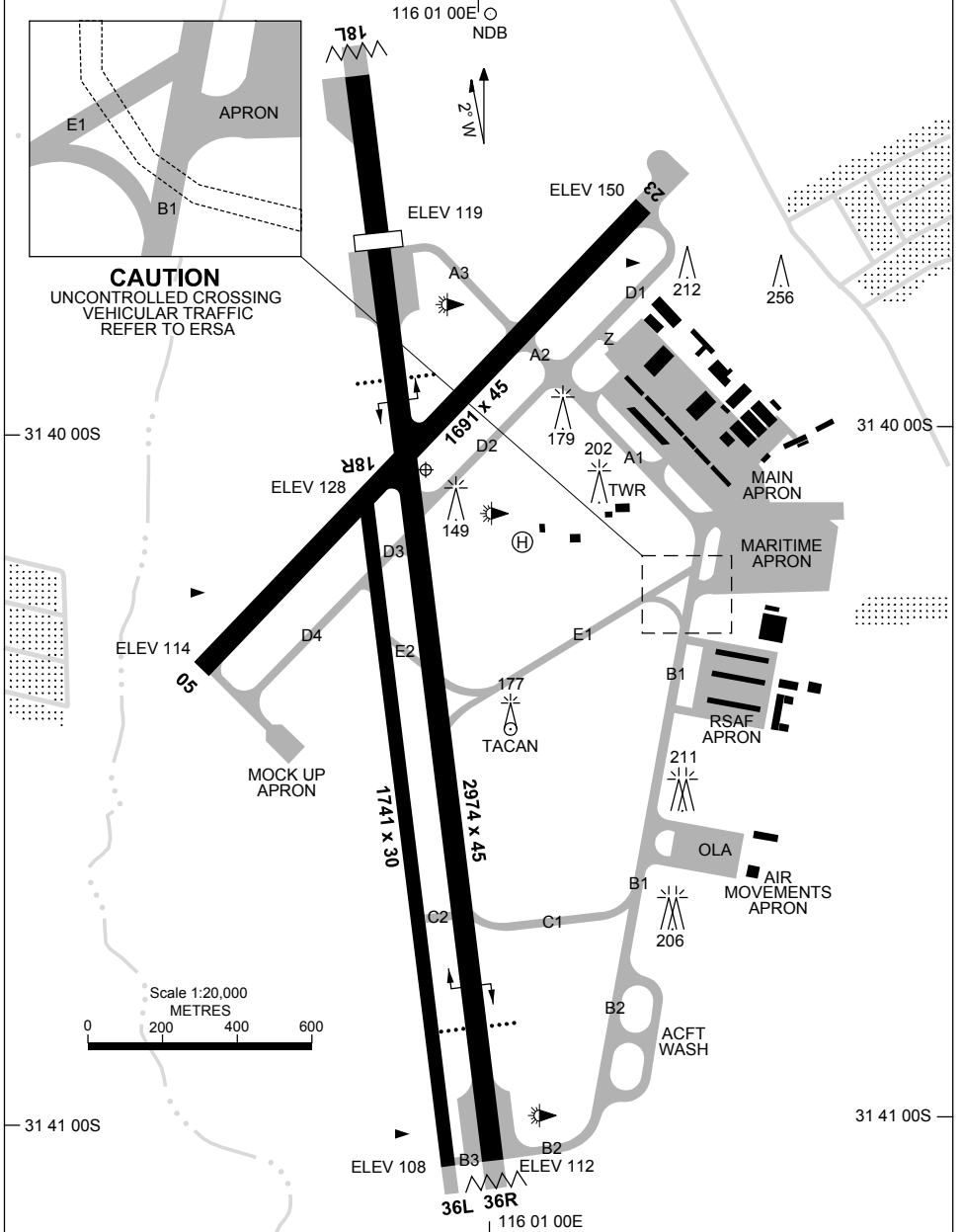


13 JUN 2024

AD ELEV 150
31 40 04S 116 00 54E

AERODROME CHART - Page 1
PEARCE, WA (YPEA)

ATIS 340 136.4 316.1	ACD 134.1	SMC 127.25	TWR 118.3 257.8	DEP PEA CEN 123.3 135.9	APP PEA APP 130.2	FIA (AH) PH CEN 135.25	CTAF+AFRU (AH) 118.3	AWIS (AH) 316.1	Bearings are Magnetic Elevations in FEET AMSL
----------------------------	--------------	---------------	--------------------	-------------------------------	-------------------------	------------------------------	-------------------------	--------------------	--------------------------------------------------



Changes: VAR.

PEAAD01-179

21 MAR 2024

31 40 04S 116 00 54E

PEARCE, WA (YPEA)

ATIS 340 136.4 316.1	ACD 134.1	SMC 127.25	TWR 118.3 257.8	DEP PEA CEN 123.3 135.9	APP PEA APP 130.2	FIA (AH) PH CEN 135.25	CTAF+AFRU (AH) 118.3	AWIS (AH) 316.1	Bearings are Magnetic Elevations in FEET AMSL
----------------------------	--------------	---------------	--------------------	-------------------------------	-------------------------	------------------------------	-------------------------	--------------------	--------------------------------------------------

--	--	--	--	--	--	--	--	--	--

RWY	AERODROME LIGHTING								
		TAXIWAYS : GREEN CENTRELINE , BLUE EDGE RL :							
05 ⁰⁴⁶ 226 23	MIRL PTBL MIRL PTBL								
18L ¹⁷⁵ 355 36R	PAPI 3.0° 47FT MIRL PTBL PAPI 3.0° 68FT MIRL PTBL								
18R ¹⁷⁵ 355 36L	NIL NIL								

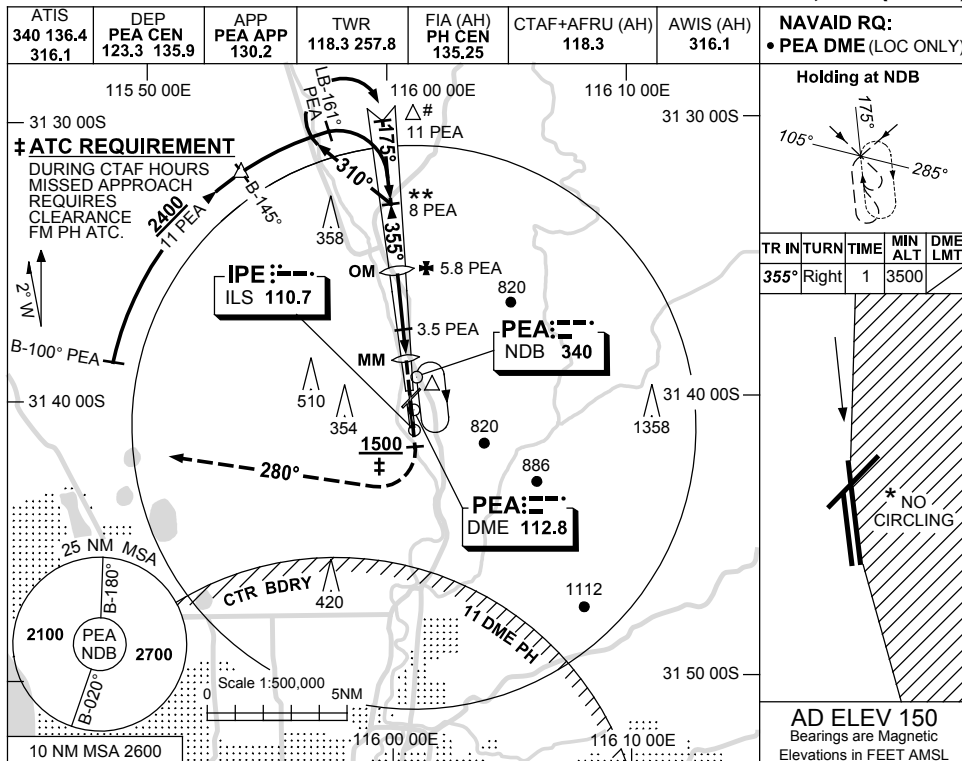
NOTES

1. PTBL LIGHTING 15MIN PN.

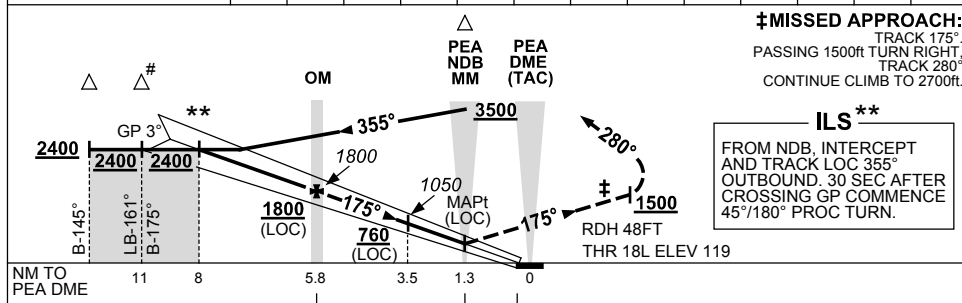
USE QNH

ILS-Z or LOC-Z RWY 18L
PEARCE, WA (YPEA)

13 JUN 2024



DIST TO PEA DME	7.7	7	6	5.8	5	4	3.5	3	2.3				
ALT (3° APCH PATH)	2400	2170	1850	1800	1530	1210	1050	890	660				



NOTES

CATEGORY	A	B	C	D
S-I ILS		430 (311)	1.7 (VIS 1.5 WITH ACTUAL QNH)	
S-I LOC/DME		660 (541-3.1)		
CIRCLING *	780 (630-2.4)		1010 (860-4.0)	1070 (920-5.0)
ALTERNATE	(1130-4.4)		(1360-6.0)	(1420-7.0)

- # 1. RADAR VECTORS TO IAF ONLY.
- * 2. NO CIRCLING EAST OF RWY 18L/36R.
- 3. TRAINING DURING CTAF HOURS - REFER ERSA FAC.

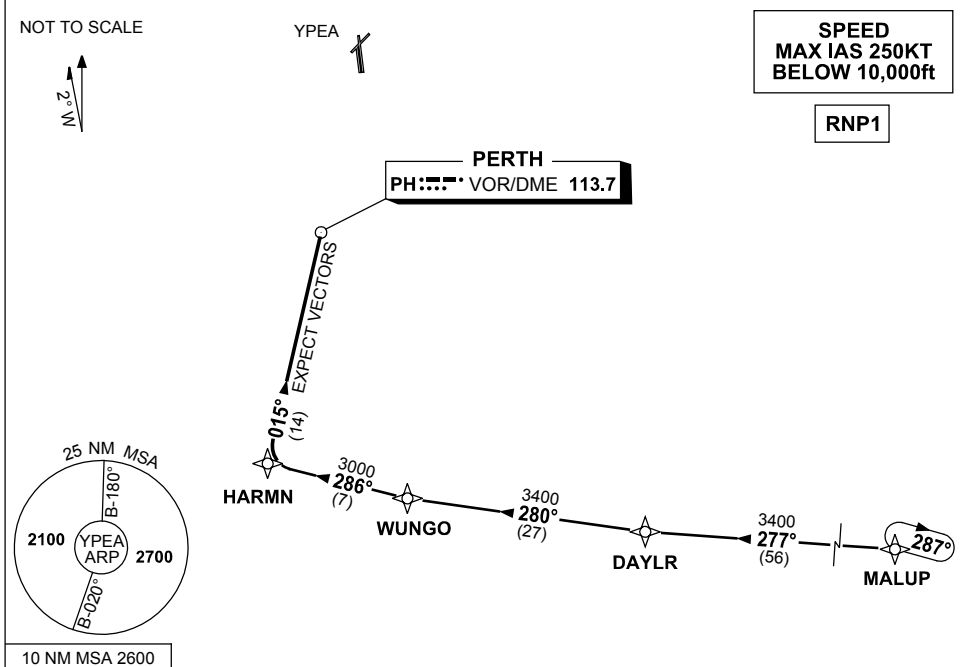
Changes: VAR.

PEAI01-179

**STANDARD INSTRUMENT ARRIVAL (STAR)
PEARCE FOUR WHISKEY ARRIVAL (RNAV)
PEARCE, WA (YPEA)**

13 JUN 2024

ATIS 340 136.4 316.1	DEP PEA CEN 123.3 135.9	APP PEA APP 130.2	TWR 118.3 257.8	FIA (AH) PH CEN 135.25	CTAF+AFRU (AH) 118.3	AWIS (AH) 316.1	Bearings are Magnetic Elevations in FEET AMSL
----------------------------	-------------------------------	-------------------------	--------------------	---------------------------	-------------------------	--------------------	--------------------------------------------------



TRANSITIONS:

- MALUP:** (NON-JET)
- From MALUP track 277° to DAYLR
 - Turn RIGHT, track 280° to WUNGO
 - Then follow ARRIVAL instructions

ARRIVAL: PEARCE FOUR WHISKEY

- From WUNGO turn RIGHT
- Track 286° to HARMN
- Turn RIGHT, track 015° to PH VOR
- Expect radar vectors to YPEA

COMMUNICATIONS FAILURE: PROCEDURE IN IMC

- Squawk 7600, comply with vertical navigation requirements, but not below MSA.
- Track via the latest STAR clearance to the nominated runway, then fly the most suitable approach in accordance with ERSA EMERG Section 1.5.

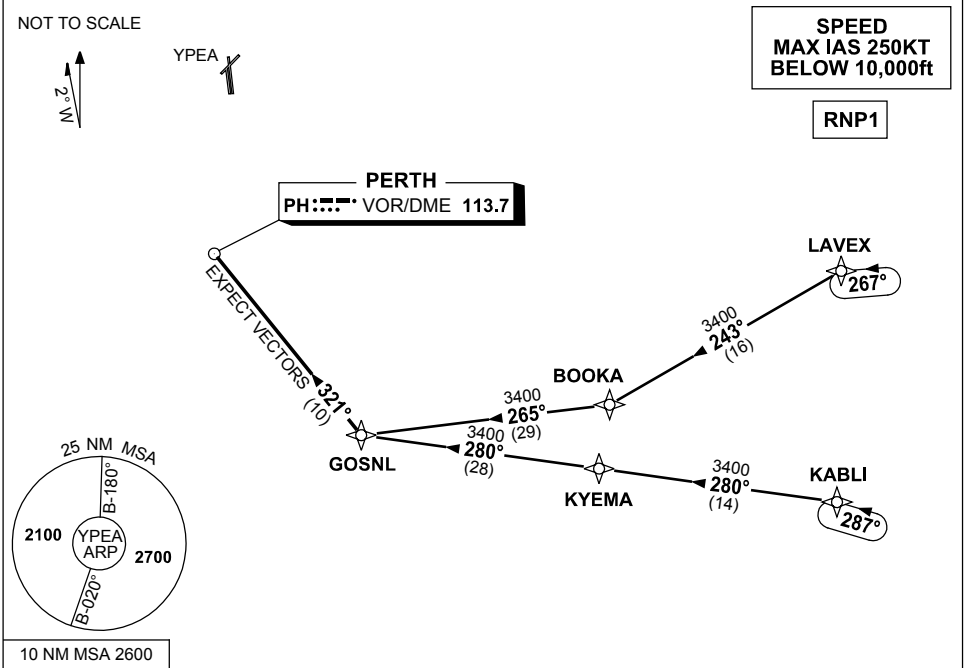
Changes: MALUP REPLACES HAMTN, VALIDITY INDICATOR, VAR, Editorial.

PEASR01-179

**STANDARD INSTRUMENT ARRIVAL (STAR)
PEARCE FOUR GOLF ARRIVAL (RNAV)
PEARCE, WA (YPEA)**

13 JUN 2024

ATIS 340 136.4 316.1	DEP PEA CEN 123.3 135.9	APP PEA APP 130.2	TWR 118.3 257.8	FIA (AH) PH CEN 135.25	CTAF+AFRU (AH) 118.3	AWIS (AH) 316.1	Bearings are Magnetic Elevations in FEET AMSL
----------------------------	-------------------------------	-------------------------	--------------------	---------------------------	-------------------------	--------------------	--------------------------------------------------



TRANSITIONS:

- LAVEX:**
(NON-JET)
- From LAVEX track 243° to BOOKA
 - Turn RIGHT, track 265° to GOSNL
 - Then follow ARRIVAL instructions

- KABLI:**
(JET)
- From KABLI track 280° to KYEMA
 - Track 280° to GOSNL
 - Then follow ARRIVAL instructions

ARRIVAL: PEARCE FOUR GOLF

- From GOSNL, turn RIGHT, track 321° to PH VOR
- Expect radar vectors to YPEA

COMMUNICATIONS FAILURE: PROCEDURE IN IMC

- Squawk 7600, comply with vertical navigation requirements, but not below MSA.
- Track via the latest STAR clearance to the nominated runway, then fly the most suitable approach in accordance with ERSA EMERG Section 1.5.

Changes: LAVEX REPLACES GRENE, KABLI REPLACES BEVLY, VALIDITY INDICATOR, VAR, Editorial.

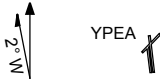
PEASR02-179

**STANDARD INSTRUMENT ARRIVAL (STAR)
PEARCE FOUR ROMEO ARRIVAL (RNAV)
PEARCE, WA (YPEA)**

13 JUN 2024

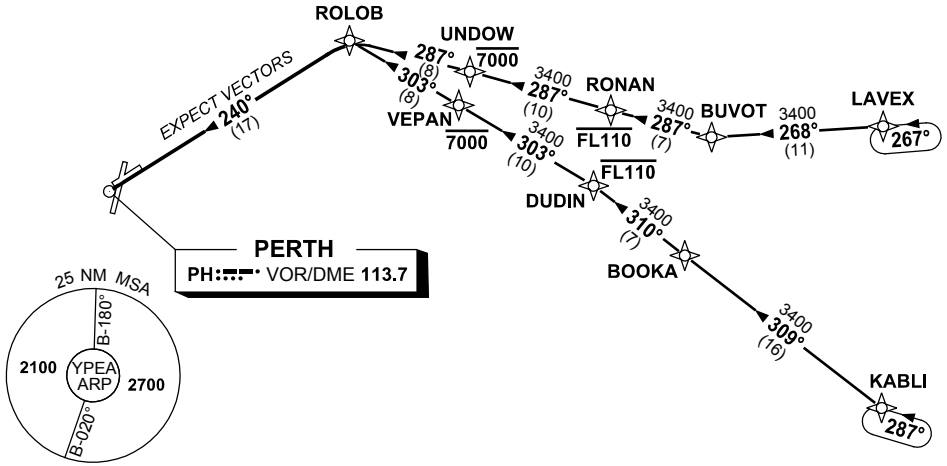
ATIS 340 136.4 316.1	DEP PEA CEN 123.3 135.9	APP PEA APP 130.2	TWR 118.3 257.8	FIA (AH) PH CEN 135.25	CTAF+AFRU (AH) 118.3	AWIS (AH) 316.1	Bearings are Magnetic Elevations in FEET AMSL
----------------------------	--------------------------------------	--------------------------------	--------------------	----------------------------------	-------------------------	--------------------	--------------------------------------------------

NOT TO SCALE



**SPEED
MAX IAS 250KT
BELOW 10,000ft**

RNP1



TRANSITIONS:

- LAVEX:**
- From LAVEX, track 268° to BUVOT, (NON-JET)
 - Turn RIGHT, track 287° to RONAN, **Cross** RONAN AT or BLW FL110,
 - Track 287° to UNDOU, **Cross** UNDOU AT or BLW 7000ft,
 - Track 287° to ROLOB, Then follow ARRIVAL instructions

- KABL:**
- From KABL, track 309° to BOOKA, (JET)
 - Track 310° to DUDIN, **Cross** DUDIN AT or BLW FL110,
 - Turn LEFT, track 303° to VEPAN, **Cross** VEPAN AT or BLW 7000ft,
 - Track 303° to ROLOB, Then follow ARRIVAL instructions

ARRIVAL: PEARCE FOUR ROMEO

- From ROLOB turn LEFT
- Track 240° to PH VOR
- Expect radar vectors to YPEA

COMMUNICATIONS FAILURE: PROCEDURE IN IMC

- Squawk 7600, comply with vertical navigation requirements, but not below MSA.
- Track via the latest STAR clearance to the nominated runway, then fly the most suitable approach in accordance with ERSA EMERG Section 1.5.