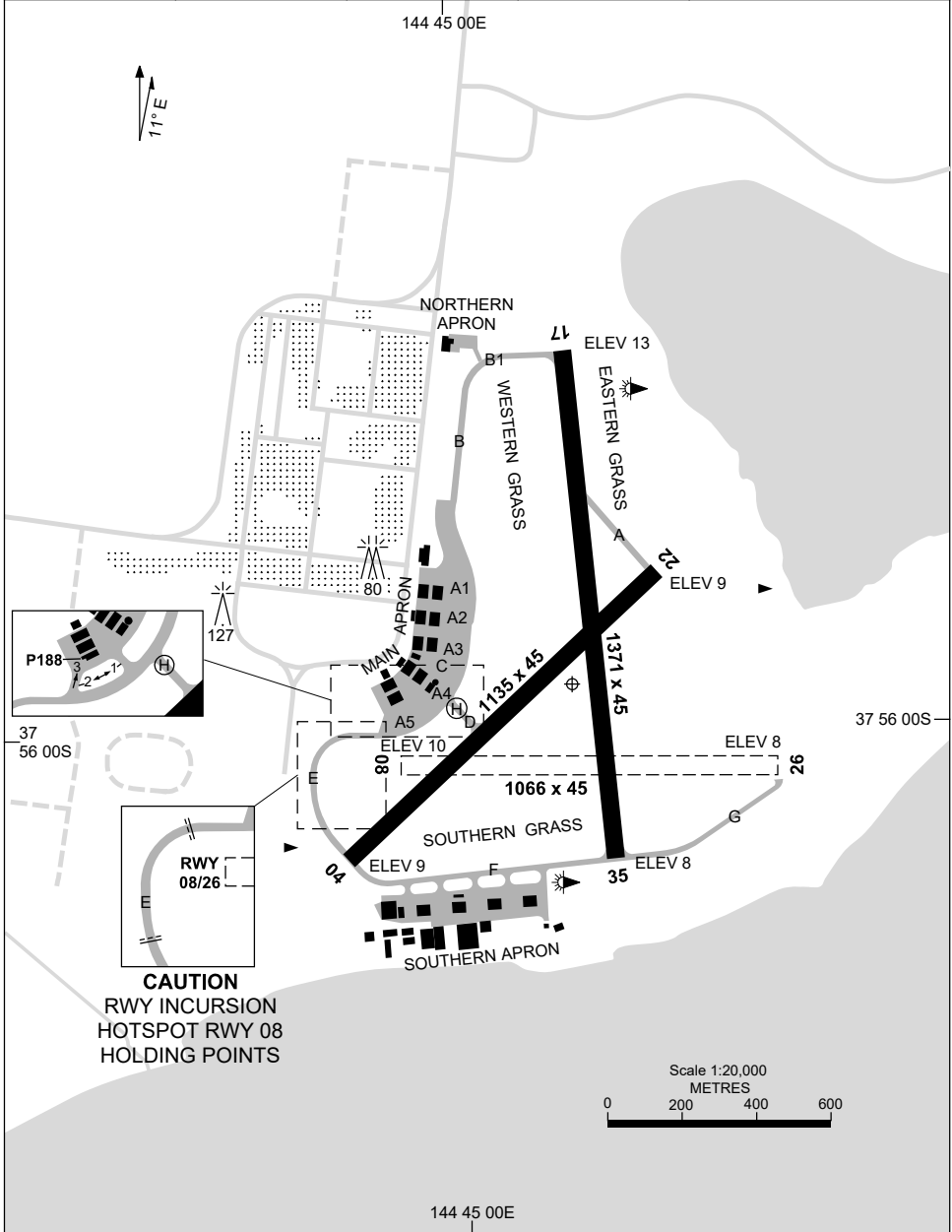


16 JUN 2022

AD ELEV 14  
37 55 56S 144 45 12E

AERODROME CHART - Page 1  
**POINT COOK, VIC (YMPC)**

AWIS 122.675	FIA ML CEN 135.7	CTAF+AFRU 126.2	AFRU+PAL 126.2	Bearings are Magnetic Elevations in FEET AMSL
-----------------	---------------------	--------------------	-------------------	--



Changes: AWIS.

MPCAD01-171

15 JUN 2023

AD ELEV 14  
37 55 56S 144 45 12E

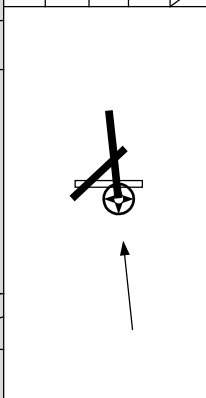
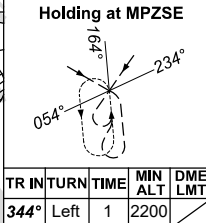
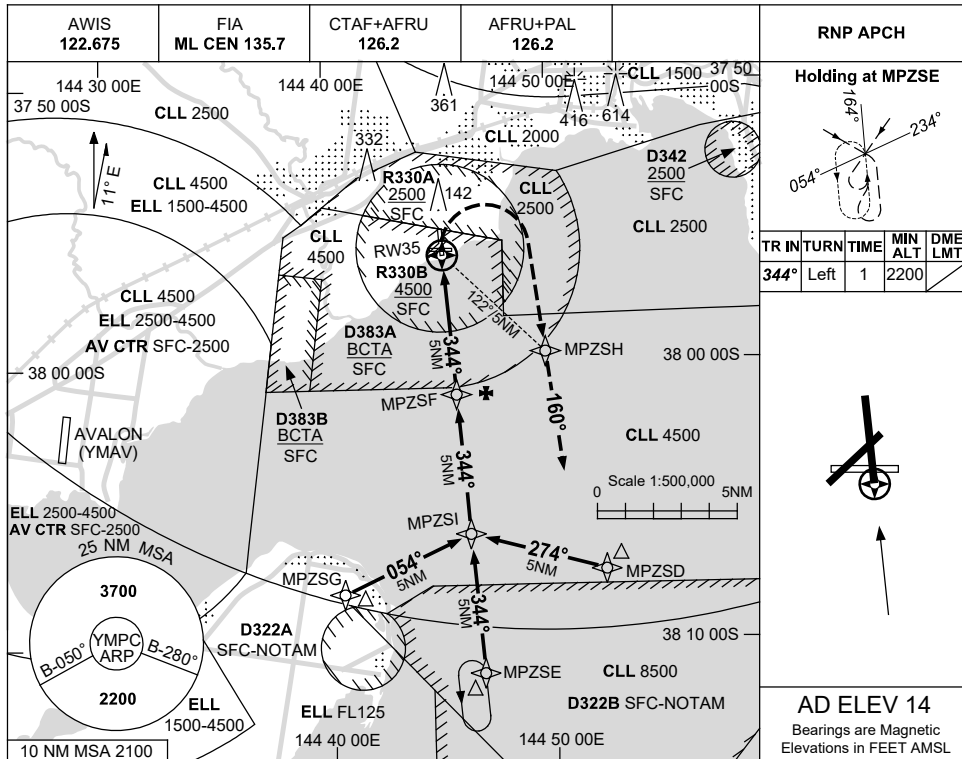
AERODROME CHART - Page 2  
**POINT COOK, VIC (YMPC)**

<p>AWIS 122.675</p>	<p>FIA ML CEN 135.7</p>	<p>CTAF+AFRU 126.2</p>	<p>AFRU+PAL 126.2</p>	<p>Bearings are Magnetic Elevations in FEET AMSL</p>
<p><b>RWY</b></p>	<p><b>AERODROME LIGHTING</b></p>			
	<p>TAXIWAY : GREEN CENTRELINE RL : AFRU+PAL 126.2</p>			
<p><b>04</b> <sup>036</sup>  216 <b>22</b></p>	<p>NIL NIL</p>			
<p><b>17</b> <sup>164</sup>  344 <b>35</b></p>	<p>LIRL LIRL</p>			
<p><b>08</b> <sup>079</sup>  259 <b>26</b></p>	<p>NIL NIL</p>			
<p><b>NOTES</b></p>				

Changes: CAUTION NOTE DELETED.

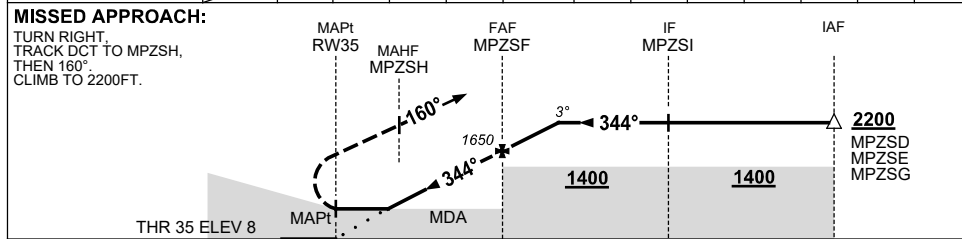
MPCAD02-175

15 JUN 2023



**AD ELEV 14**  
Bearings are Magnetic  
Elevations in FEET AMSL

NM TO NEXT WPT	RW35	1.5	2	3	4	MPZSF	1	1.7				
ALT (3° APCH PATH)		550	690	1010	1330	1650	1970	2200				



**NOTES**

CATEGORY	A	B	C	D
LNAV	550 (536-3.0)			NOT APPLICABLE
CIRCLING	610 (596-2.4)		870 (856-4.0)	
ALTERNATE	(1096-4.4)		(1356-6.0)	

- MAX IAS: INITIAL : 210KT, MAP TURN: 160KT.
- FOR RESTRICTIONS SEE ERSA.
- APCH CONFLICTS WITH YMMB NDB-A AV-MB TRACK.

Changes: REMOVED PLUME SYMBOL.

MPCGN01-175