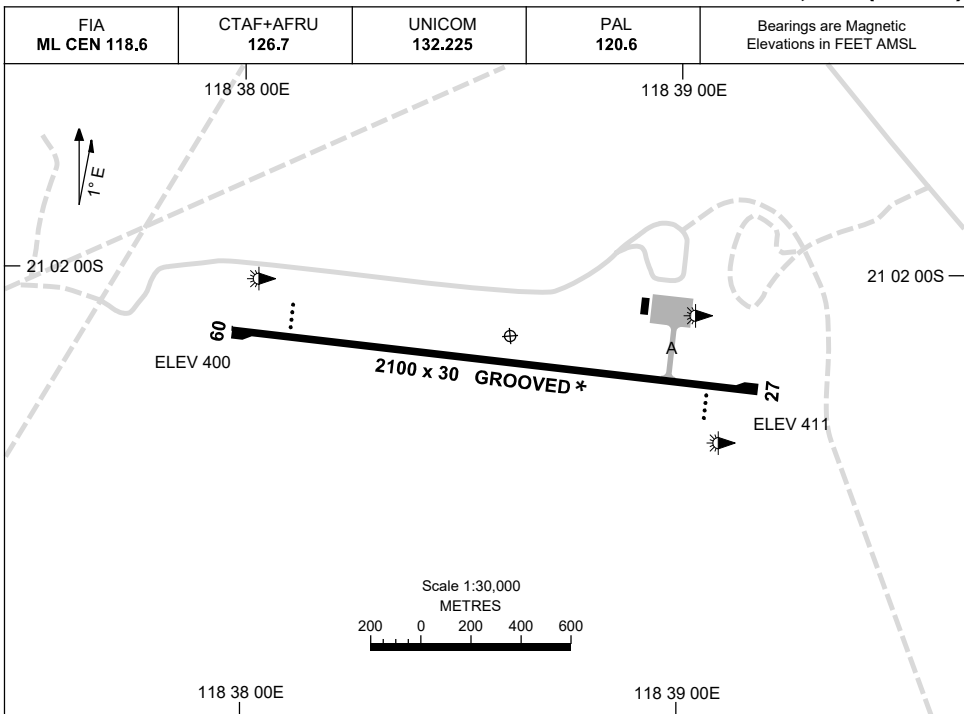


5 SEP 2024 AD ELEV 411 AERODROME CHART  
 21 02 09S 118 38 37E **PORT HEDLAND/WODGINA, WA (YWGA)**



	<b>AERODROME LIGHTING</b>
<b>RWY</b>	TWY : BLUE EDGE RL : PAL 120.6 , SDBY (2 MIN)
<b>09</b> <small>095</small>	PAPI LEFT SIDE 3.0° 53FT LIRL PTBL
<small>275</small> <b>27</b>	PAPI LEFT SIDE 3.0° 53FT LIRL PTBL

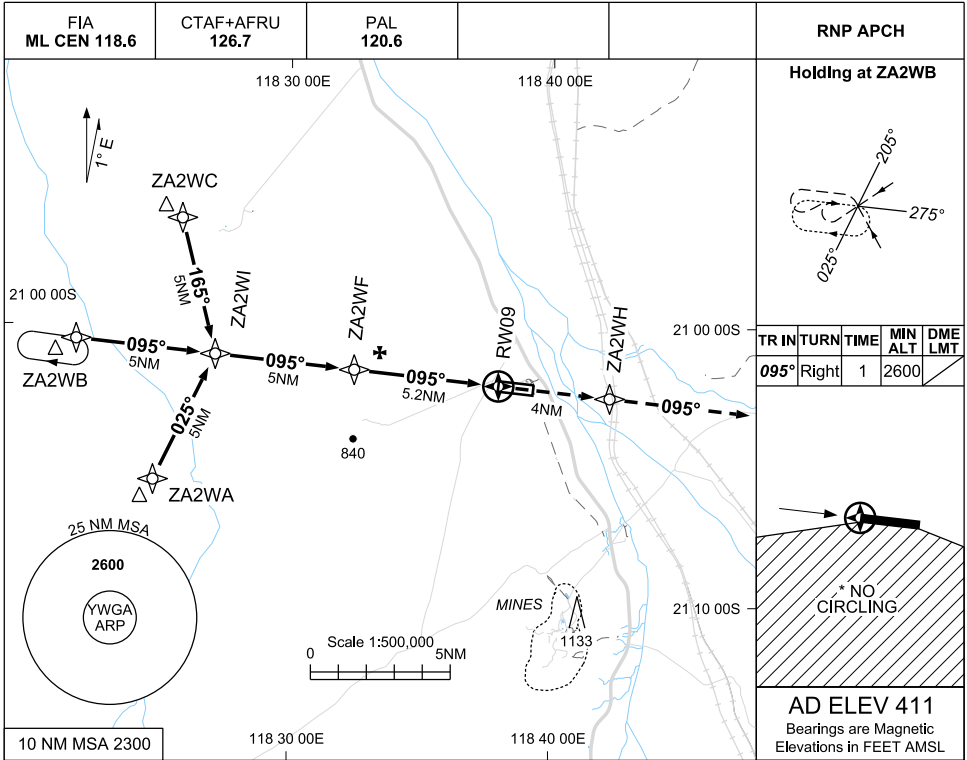
**NOTES**

- \* 1. RWY GROOVED - 30M WIDE.
- 2. UNICOM CALL SIGN "WODGINA UNICOM".  
AVBL FOR SCHEDULED MOVEMENTS.
- 3. FIA FREQ 118.6 AVBL IN CIRCUIT AREA.
- 4. RWY 09/27 PTBL LIGHTING AVBL WITH 2HR PN.

**USE QNH**  
**PORT HEDLAND / WODGINA, WA (YWGA)**

RNP RWY 09

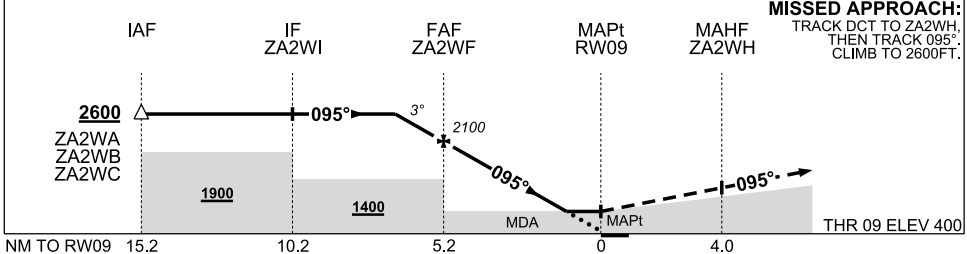
**5 SEP 2024**



TR	TURN	TIME	MIN ALT	DME LMT
095°	Right	1	2600	

**AD ELEV 411**  
Bearings are Magnetic  
Elevations in FEET AMSL

NM TO NEXT WPT	1.6	1	ZA2WF	4	3	2	1.4	RW09
ALT (3° APCH PATH)	2600	2420	2100	1720	1410	1090	910	



**MISSED APPROACH:**  
TRACK DCT TO ZA2WH,  
THEN TRACK 095°  
CLIMB TO 2600FT.

**NOTES**

- MAX IAS :  
INITIAL : 210KT
- NO CIRCLING  
SOUTH OF  
RWY 09/27

CATEGORY	A	B	C	D
LNAV	910 (510-3.0)			NOT APPLICABLE
CIRCLING *	1010 (599-2.4)		1110 (699-4.0)	
ALTERNATE	(1099-4.4)		(1199-6.0)	

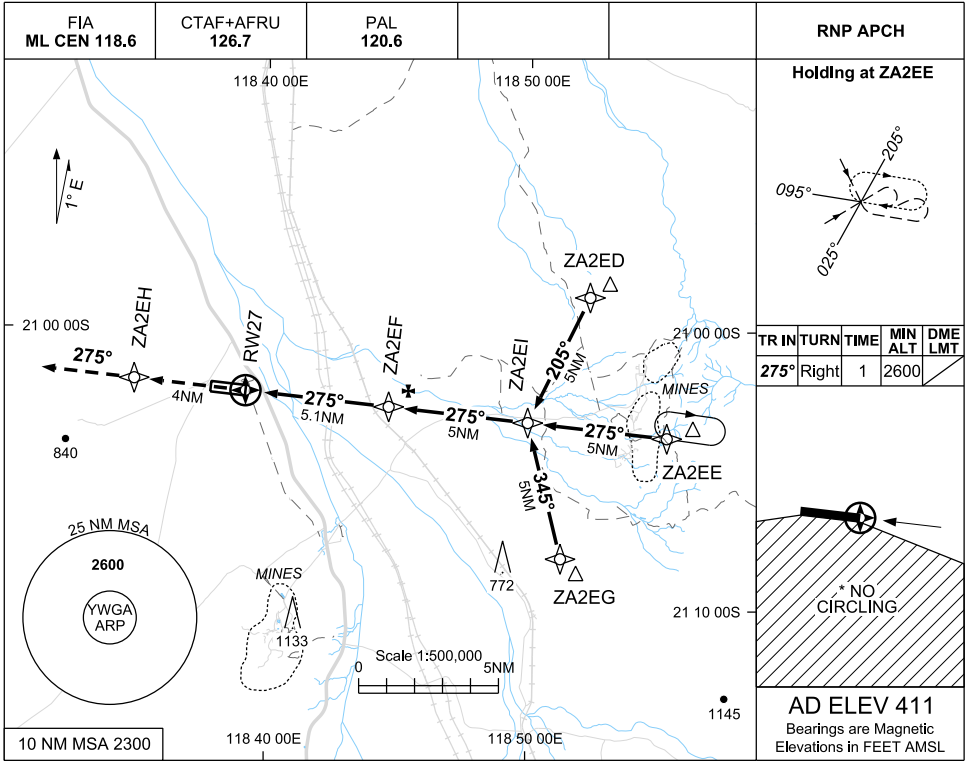
Changes: AD ELEV, EDITORIAL.

WGAGN01-180

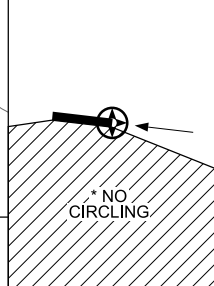
USE QNH  
PORT HEDLAND / WODGINA, WA (YWGA)

RNP RWY 27

5 SEP 2024

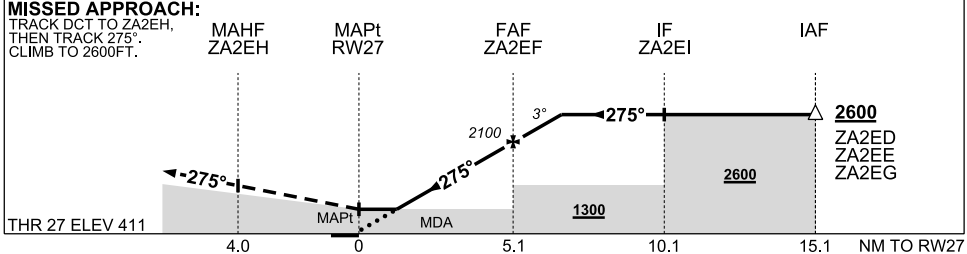


TR	TURN	TIME	MIN ALT	DME LMT
275°	Right	1	2600	



**AD ELEV 411**  
Bearings are Magnetic  
Elevations in FEET AMSL

NM TO NEXT WPT	RW27	1.6	2	3	4	ZA2EF	1	1.6			
ALT (3° APCH PATH)		960	1100	1420	1730	2100	2420	2600			



**NOTES**

- MAX IAS : 210KT
- NO CIRCLING SOUTH OF RWY 09/27
- CAUTION:** BLASTING 15NM E OF RWY 09/27 REFER ERSA

CATEGORY	A	B	C	D
LNAV	960 (549-3.2)			NOT APPLICABLE
CIRCLING *	1010 (599-2.4)	1110 (699-4.0)		
ALTERNATE	(1099-4.4)	(1199-6.0)		

Changes: AD ELEV, THR ELEV, EDITORIAL.

WGAGN02-180