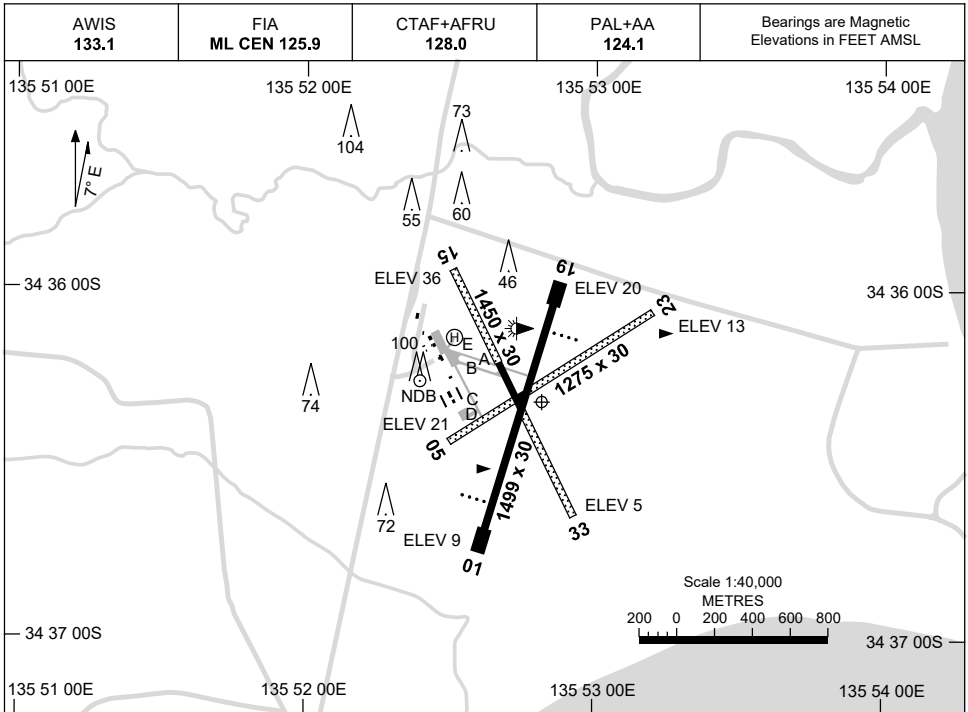


8 SEP 2022

AD ELEV 36  
34 36 19S 135 52 49E

**AERODROME CHART**  
**PORT LINCOLN, SA (YPLC)**



RWY		<b>AERODROME LIGHTING</b>	
		TAXIWAY : BLUE EDGE ON TWY A, B AND E RL : PAL+AA 124.1 , SDBY (15 SEC)	
<b>01</b>	<sup>010</sup>	PAPI 3.0° 45FT LIRL	
<sup>190</sup> <b>19</b>		PAPI 3.0° 45FT LIRL	
<b>05</b>	<sup>051</sup>	NIL	
<sup>231</sup> <b>23</b>		NIL	
<b>15</b>	<sup>147</sup>	LIRL	
<sup>327</sup> <b>33</b>		LIRL	

**NOTES**

Changes: TWY D AND E ADDED, TWY LIGHTING, HLS, COORD FORMAT, NOTES.

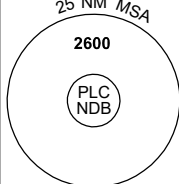
PLCAD01-172

# GNSS ARRIVAL PROCEDURES PORT LINCOLN, SA (YPLC)

16 JUN 2022

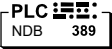
AWIS 133.1	FIA ML CEN 125.9	CTAF+AFRU 128.0	PAL+AA 124.1	Bearings are Magnetic Elevations in FEET AMSL
---------------	---------------------	--------------------	-----------------	--

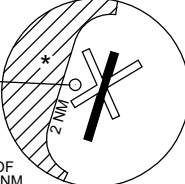
25 NM MSA



10 NM MSA 2600

**REFERENCE WAYPOINT PLC NDB**

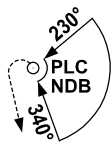


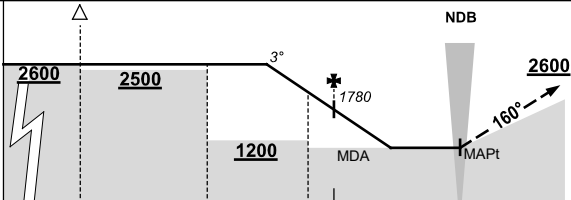


\* NO CIRCLING WEST OF RWY 01/19 BEYOND 2NM.

AD ELEV 36

**SECTOR A**






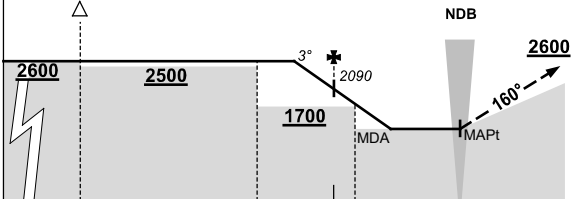
**MISSED APPROACH:**

TRACK 160°. CLIMB TO 2600FT.

NM TO PLC NDB	25	15	10	6	5	0								
<b>CIRCLING MINIMA</b>	A,B: 1040-2.4		C: 1210-4.0		D: N/A									
NM TO PLC NDB	7.6	7	6	5	4	3	2.7							
ALT (3° APCH PATH)	2600	2420	2100	1780	1460	1140	1040							

**SECTOR B**





**MISSED APPROACH:**

TRACK 160°. CLIMB TO 2600FT.

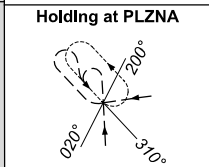
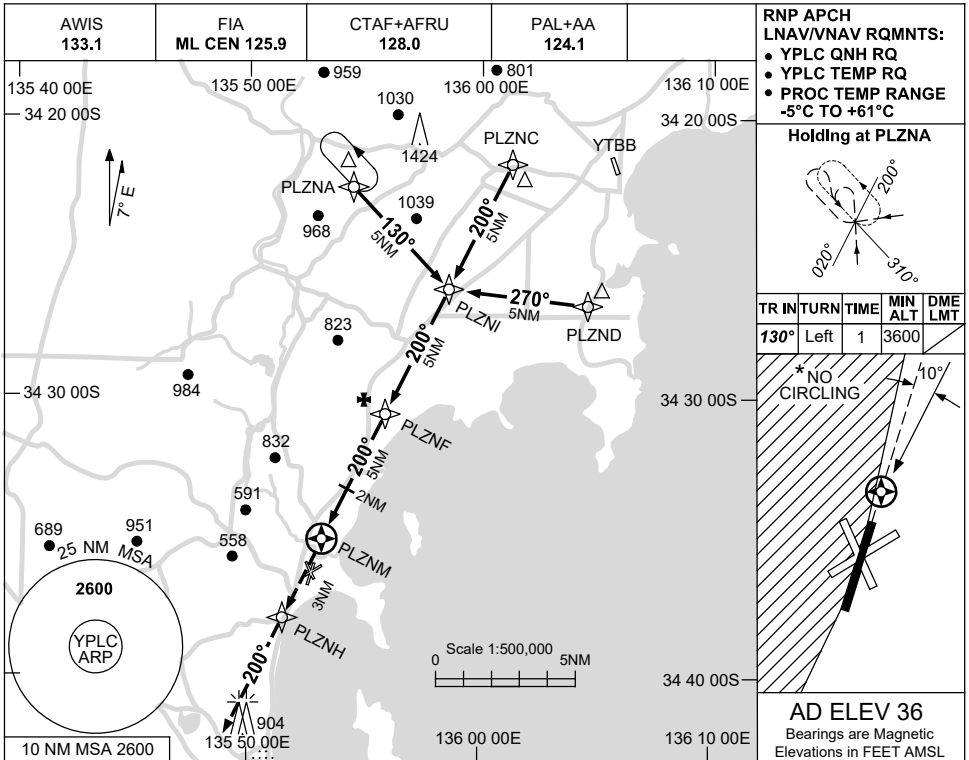
NM TO PLC NDB	25	15	8	5	4	0								
<b>CIRCLING MINIMA</b>	A,B: 1370-2.4		C: 1370-4.0		D: N/A									
NM TO PLC NDB	6.6	6	5	4	3	2.8								
ALT (3° APCH PATH)	2600	2410	2090	1770	1450	1370								

USE QNH

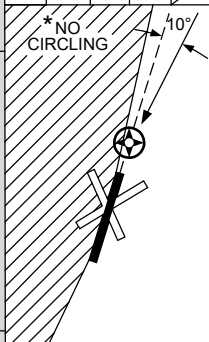
RNP RWY 19

**PORT LINCOLN, SA (YPLC)**

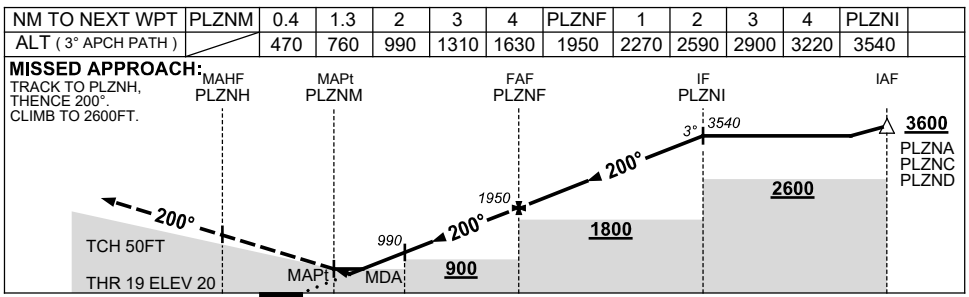
1 DEC 2022



TR IN	TURN	TIME	MIN ALT	DME LMT
130°	Left	1	3600	



**AD ELEV 36**  
Bearings are Magnetic  
Elevations in FEET AMSL



**NOTES**

CATEGORY	A	B	C	D
LNAV/VNAV		470 (450-2.5)		NOT APPLICABLE
LNAV		760 (740-4.2)		
CIRCLING*	1040 (1004-2.4)		1210 (1174-4.0)	
ALTERNATE	(1504-4.4)		(1674-6.0)	

- MAX IAS:  
HOLDING: 210KT.  
INITIAL : 210KT.
- NO CIRCLING WEST OF RWY 01/19.
- HOLDING AND INITIAL OVER-LIES TUMBY BAY RNP PROC.

Changes: CHART TITLE, PBN SPECIFICATION BOX.

PLCGN01-173

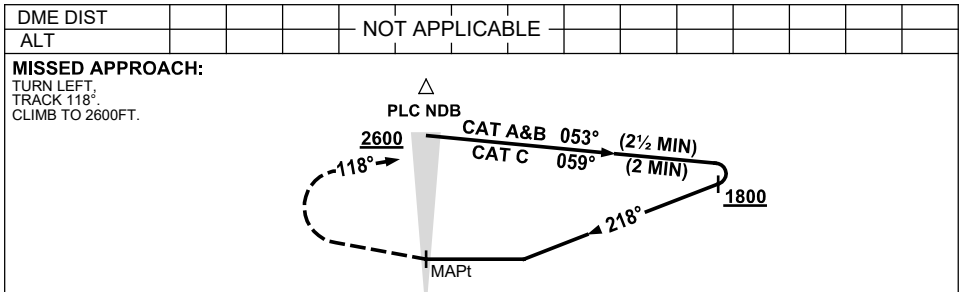
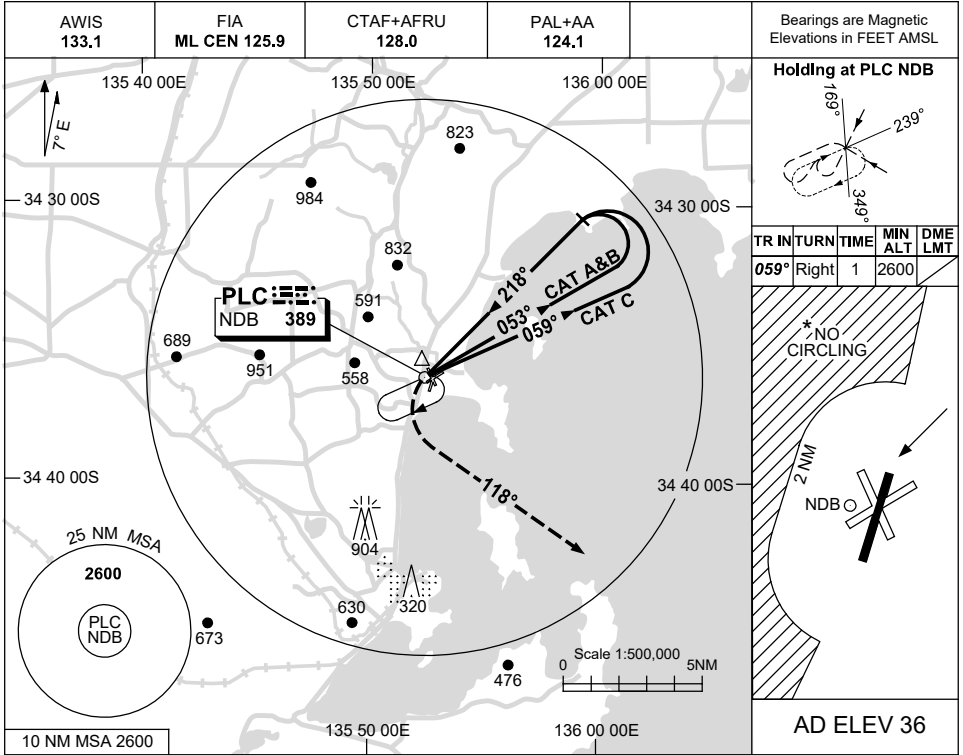


USE QNH

NDB-A

16 JUN 2022

**PORT LINCOLN, SA (YPLC)**



**NOTES**

CATEGORY	A	B	C	D
CIRCLING *	1040 (1004-2.4)		1210 (1174-4.0)	
ALTERNATE	(1504-4.4)		(1674-6.0)	

NOT APPLICABLE

1. MAX IAS:  
INITIAL :  
CAT C 180KT.
- \*2. NO CIRCLING WEST OF RWY 01/19 BEYOND 2NM.

Changes: PAL+AA.

PLCNB01-171