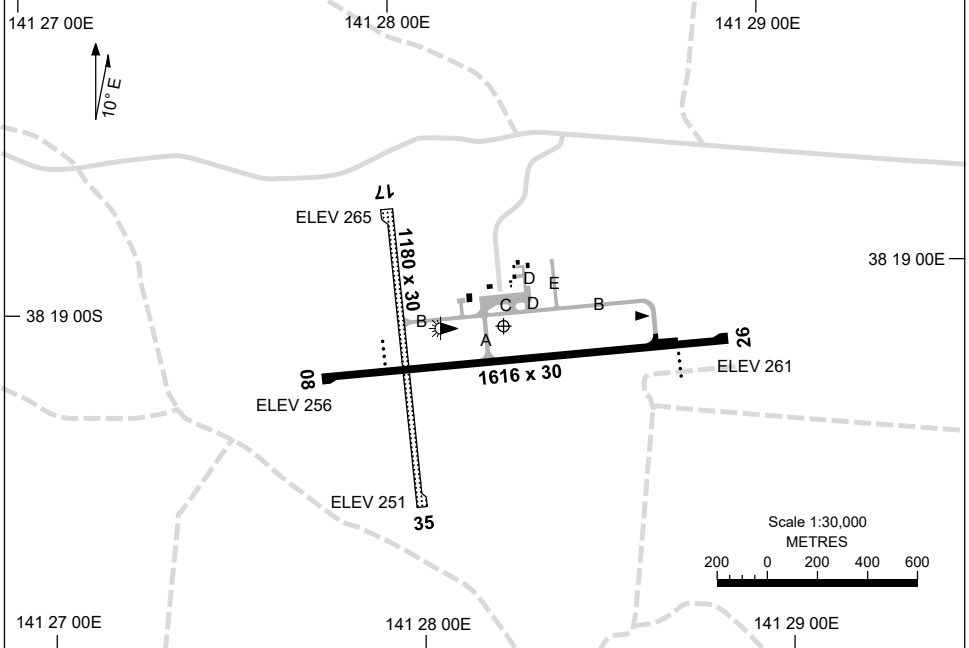


15 JUN 2023

AD ELEV 265
38 19 05S 141 28 16E

AERODROME CHART
PORTLAND VIC, (YPOD)

AWIS 118.75	FIA ML CEN 125.8	CTAF+AFRU 127.95	AFRU+PAL 127.95	Bearings are Magnetic Elevations in FEET AMSL
----------------	---------------------	---------------------	--------------------	--



AERODROME LIGHTING	
RWY	TAXIWAY : TWY A, TWY B (BTN TWY A AND C) AND TWY C GREEN CL RL : AFRU+PAL 127.95 , SDBY (15 SEC)
08 ⁰⁷⁷	PAPI 3.0° 39.4FT LIRL
²⁵⁷ 26	PAPI 3.0° 39.4FT LIRL
17 ¹⁶⁷	NIL
³⁴⁷ 35	NIL

NOTES

1. FIA FREQ 125.8 AVBL CIRCUIT AREA.

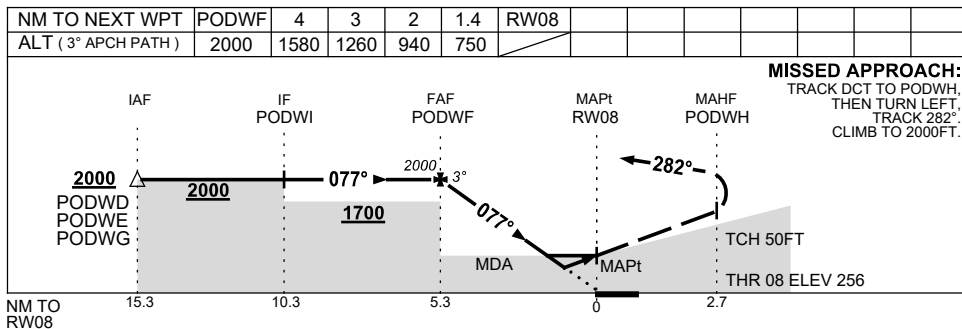
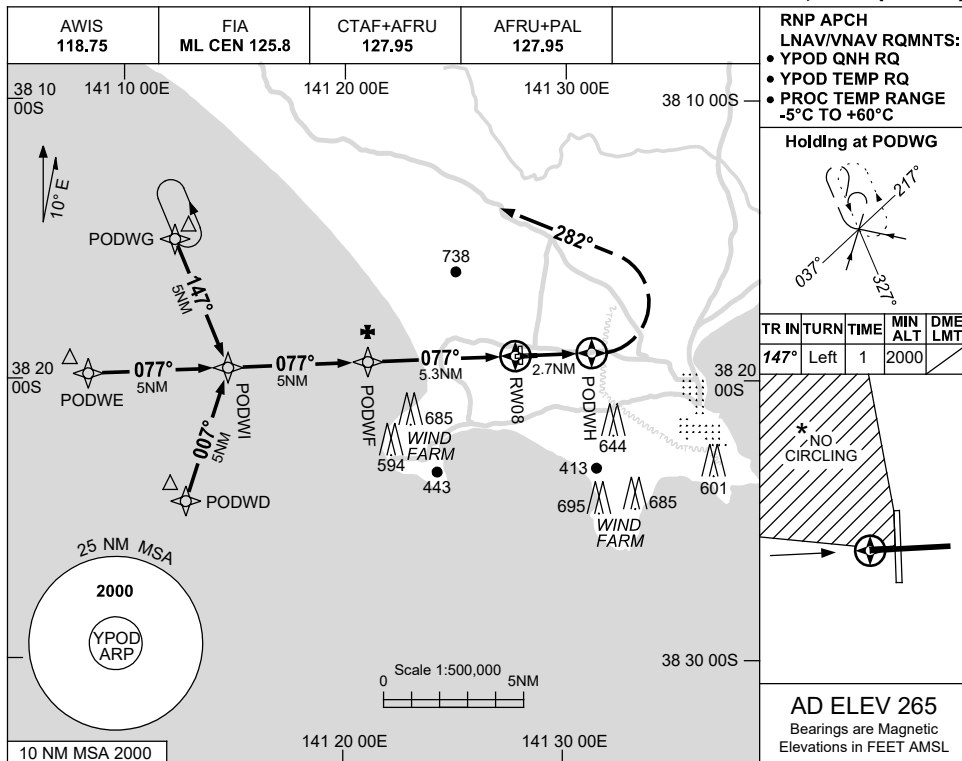
Changes: NOTES.

PODAD01-175

USE QNH

RNP RWY 08
PORTLAND, VIC (YPOD)

15 JUN 2023



NOTES

CATEGORY	A	B	C	D
LNAV/VNAV	750 (494-2.8)			NOT APPLICABLE
LNAV	940 (684-3.9)			
CIRCLING *	940 (675-2.4)		1180 (915-4.0)	
ALTERNATE	(1175-4.4)		(1415-6.0)	

- 1. MAX IAS: INITIAL : 210KT.
- * 2. NO CIRCLING IN SECTOR NW OF RWY 08/26 AND RWY 17/35.

Changes: CHART TITLE, PBN SPECIFICATION BOX, Editorial.

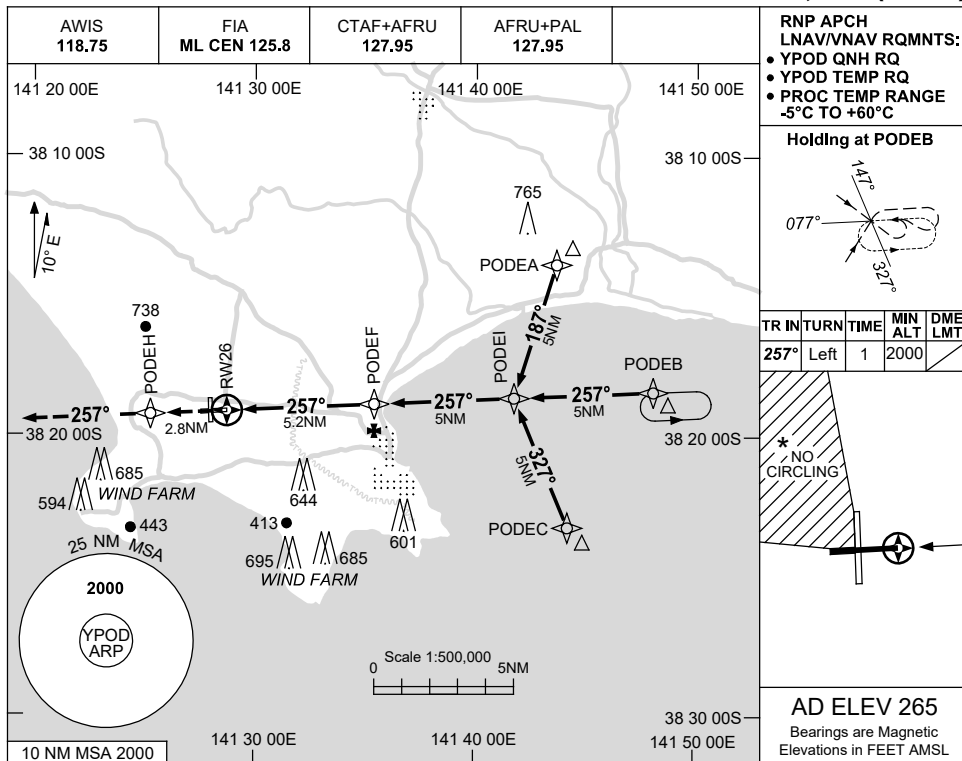
PODGN01-175

USE QNH

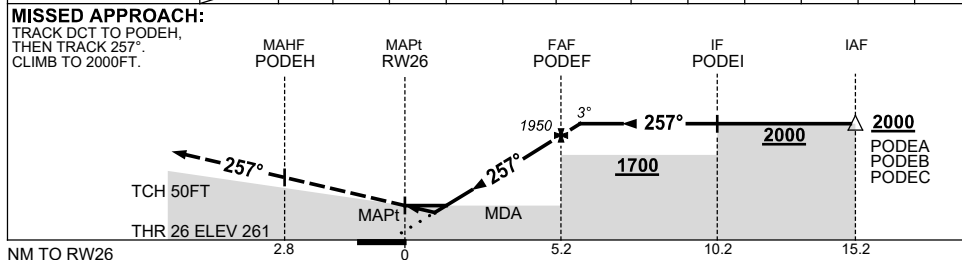
RNP RWY 26

15 JUN 2023

PORTLAND, VIC (YPOD)



NM TO NEXT WPT	RW26	1	1.6	2	3	4	PODEF	0.1				
ALT (3° APCH PATH)		620	810	950	1270	1580	1950	2000				



NOTES

CATEGORY	A	B	C	D
LNAV/VNAV	620 (359-2.0)			NOT APPLICABLE
LNAV	810 (545-3.1)			
CIRCLING *	940 (675-2.4)		1180 (915-4.0)	
ALTERNATE	(1175-4.4)		(1415-6.0)	

1. MAX IAS:
INITIAL : 210KT.
- * 2. NO CIRCLING IN
SECTOR NW OF
RWY 08/26 AND
RWY 17/35.

Changes: CHART TITLE, PBN SPECIFICATION BOX, Editorial.

PODGN02-175