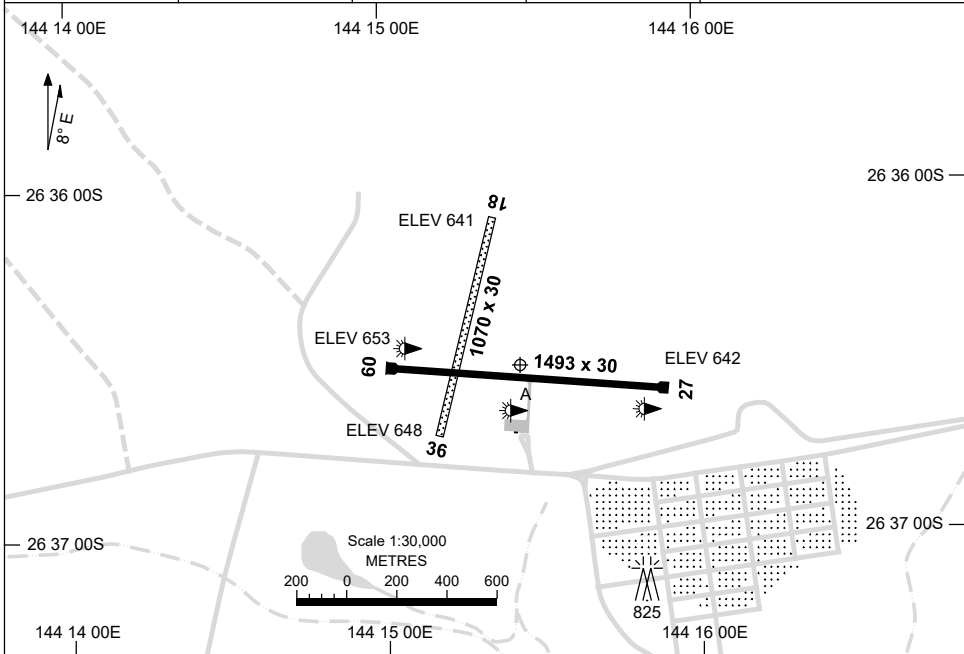


21 MAR 2024

AD ELEV 655  
26 36 31S 144 15 26E

AERODROME CHART  
**QUILPIE, QLD (YQLP)**

FIA BN CEN 118.8	CTAF+AFRU 126.7	PAL+AA 120.6		Bearings are Magnetic Elevations in FEET AMSL
---------------------	--------------------	-----------------	--	--



RWY		AERODROME LIGHTING	
		TWY : BLUE EDGE RL : PAL+AA 120.6 , PTBL, SDBY (15 SEC)	
<b>09</b> <sup>086</sup>		LIRL	PTBL
<sup>266</sup> <b>27</b>		LIRL	PTBL
<b>18</b> <sup>187</sup>		NIL	
<sup>007</sup> <b>36</b>		NIL	

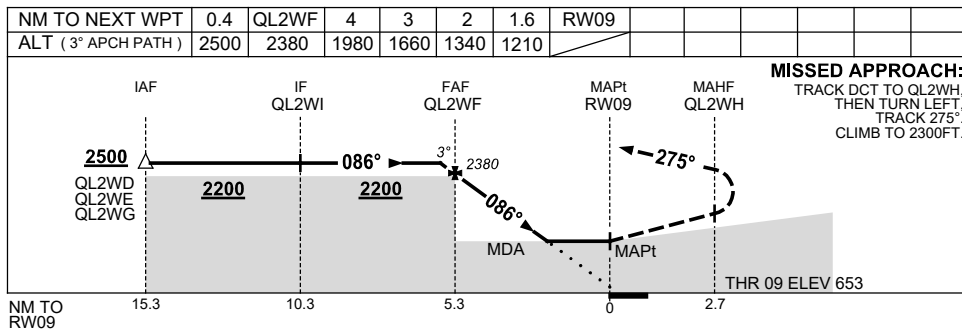
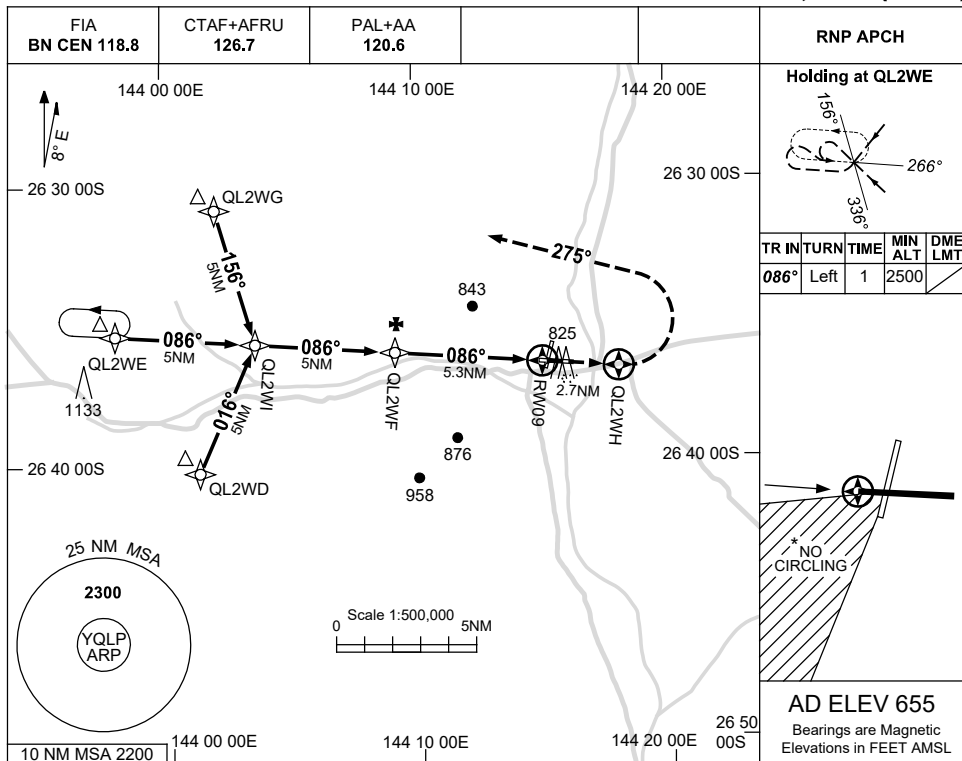
**NOTES**

1. FIA FREQ 118.8 AVBL 7,000ft.

USE QNH

RNP RWY 09  
**QUILPIE, QLD (YQLP)**

1 DEC 2022



**NOTES**

CATEGORY	A	B	C	D
LNAV	1210 (555-3.1)			NOT APPLICABLE
CIRCLING *	1250 (595-2.4)	1480 (825-4.0)		
ALTERNATE	(1095-4.4)		(1325-6.0)	

- MAX IAS:  
INITIAL : 230KT.
- NO CIRCLING SOUTH WEST OF RWY 18/36 & 09/27.

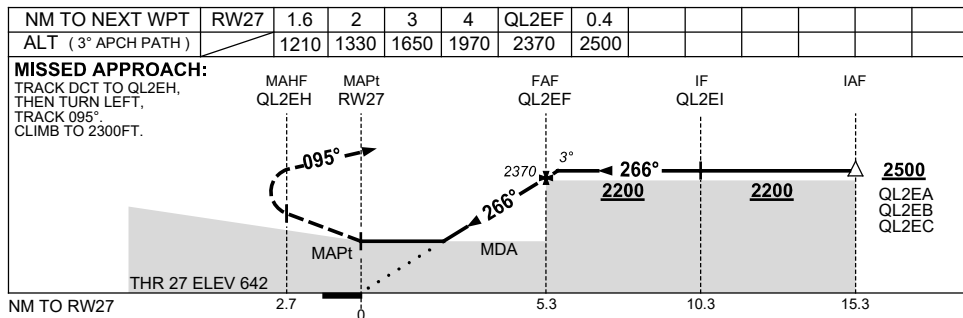
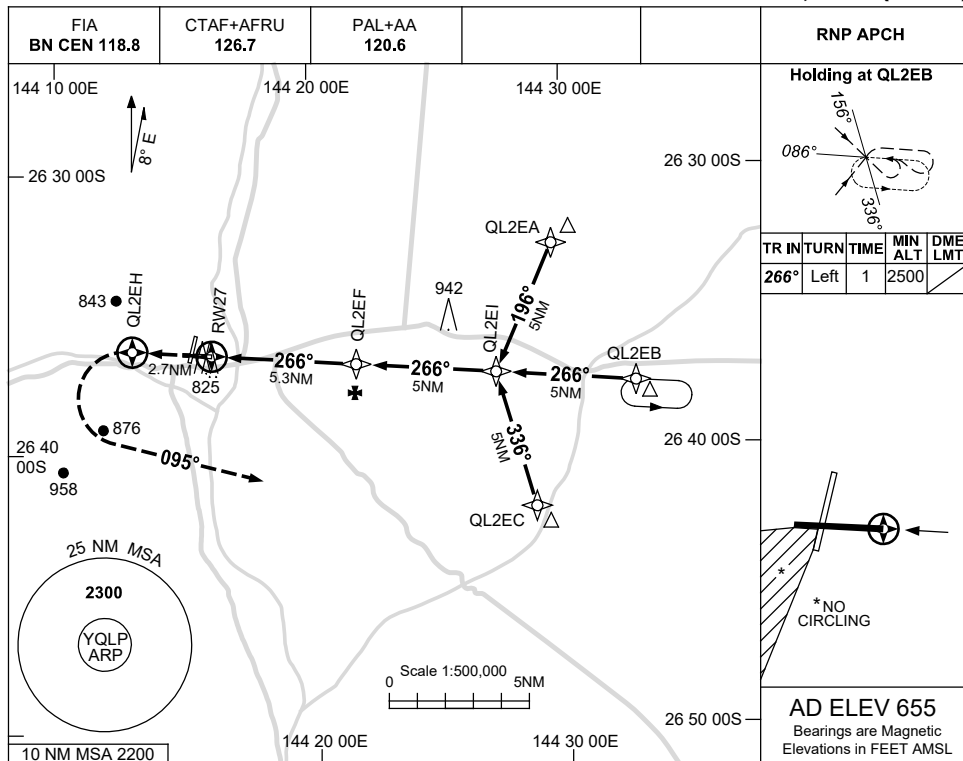
Changes: 1133FT MAST, 825FT MAST, WPT NAMING CONVENTION.

QLPGN01-173

USE QNH

RNP RWY 27  
**QUILPIE, QLD (YQLP)**

1 DEC 2022



**NOTES**

CATEGORY	A	B	C	D
LNAV	1210 (568-3.2)			NOT APPLICABLE
CIRCLING *	1250 (595-2.4)		1480 (825-4.0)	
ALTERNATE	(1095-4.4)		(1325-6.0)	

- 1. MAX IAS: INITIAL : 230KT.
- \*2. NO CIRCLING SOUTH WEST OF RWY 18/36 & 09/27.

Changes: 942FT MAST, 825FT MAST, WPT NAMING CONVENTION.

QLPGN02-173