

13 JUN 2024

AD ELEV 67
33 36 02S 150 46 51E

AERODROME CHART - Page 2
RICHMOND, NSW (YSRI)

ATIS/AWIS (AH) 126.3 274.55	SMC 128.25	TWR 135.5 257.3	APP 135.9 363.8	FIA (AH) SY CEN 124.55	CTAF+AFRU (AH) 135.5	AFRU+PAL 135.5	Bearings are Magnetic Elevations in FEET AMSL
--------------------------------	---------------	--------------------	--------------------	---------------------------	-------------------------	-------------------	--

--	--	--	--	--	--	--	--

RWY	AERODROME LIGHTING						
	TAXIWAYS : GREEN CENTRELINE RL : AFRU+PAL 135.5, SDBY , PTBL (15 MIN PN)						
10 ⁰⁹⁵ 275 28	PAPI 3.0° 47FT HIRL PAPI 3.0° 48FT HIRL HIAL - CAT I SFL						

NOTES							
--------------	--	--	--	--	--	--	--

Changes: ARFU+PAL, Editorial.

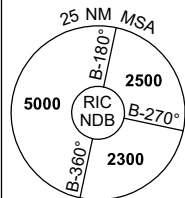
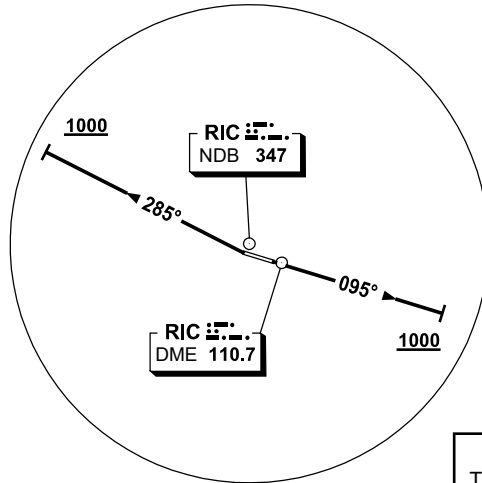
SRIAD02-179

**STANDARD INSTRUMENT DEPARTURES (SID)
RICHMOND FOUR DEPARTURE (RADAR)
RICHMOND, NSW (YSRI)**

13 JUN 2024

ATIS/AWIS (AH) 126.3 274.55	SMC 128.25	TWR 135.5 257.3	APP 135.9 363.8	FIA (AH) SY CEN 124.55	CTAF+AFRU (AH) 135.5	AFRU+PAL 135.5	Bearings are Magnetic Elevations in FEET AMSL
--------------------------------	---------------	--------------------	--------------------	---------------------------	-------------------------	-------------------	--

NOT TO SCALE



**CAUTION:
TREES IN RWY 10
DEP AREA**

10 NM MSA 3300

RICHMOND FOUR DEPARTURE (RADAR)

RWY 10

- Grad 3.3%
- Track 095°
- At 1000ft and not before DER turn to assigned heading or track

RWY 28

- GRAD 4.9% to 2600ft, thence 3.3%
- At DER turn right track 285°
- At 1000ft and not before DER turn to assigned heading

COMMUNICATION FAILURE PROCEDURE

On recognition of communication failure:

- Squawk 7600
- Maintain last assigned vector for two minutes, and
- CLIMB IF NECESSARY TO MINIMUM SAFE ALTITUDE, to maintain terrain clearance, then
- proceed in accordance with the latest ATC route clearance acknowledged.

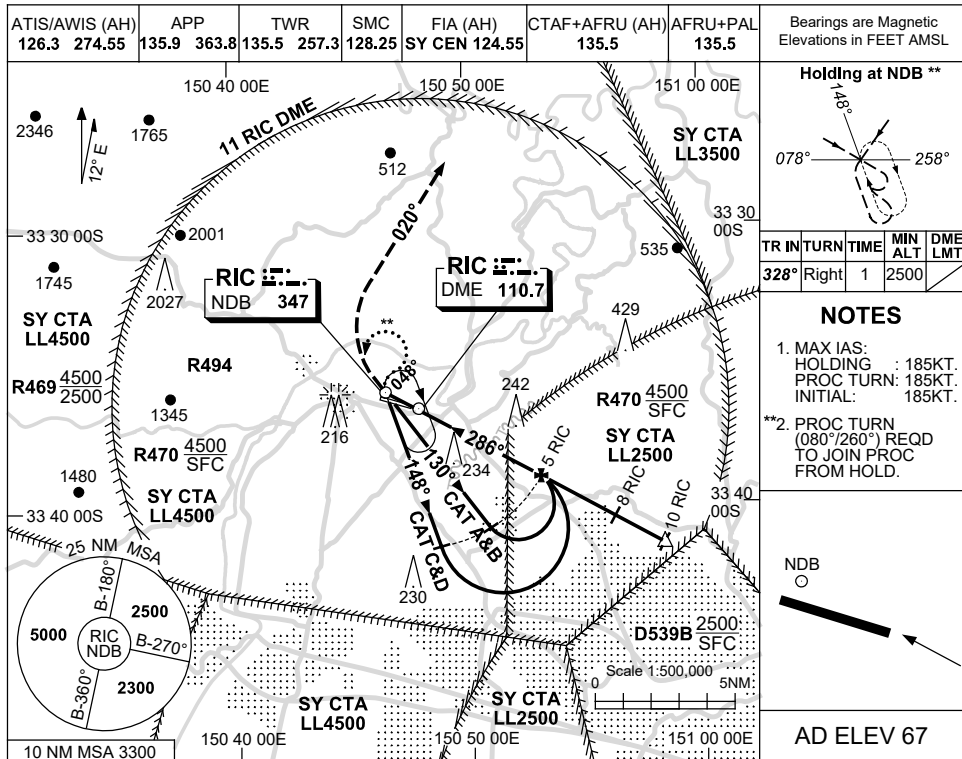
Changes: AFRU+PAL, Editorial.

SRIDP01-179

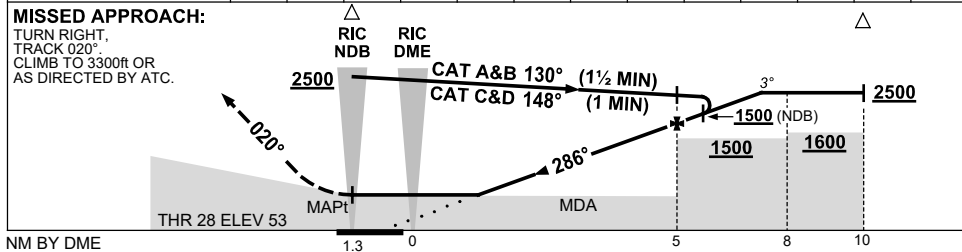
USE QNH

NDB-B or NDB RWY 28
RICHMOND, NSW (YSRI)

13 JUN 2024



DIST BY DME	1.6	2	3	4	4.1	5	6	7	7.3			
ALT (3° APCH PATH)	680	820	1140	1460	1500	1780	2100	2420	2500			



NOTES

CATEGORY	A	B	C	D
S-I NDB/DME	750 (697-4.0)			
NDB	CIRCLING ONLY			
CIRCLING	800 (733-2.4)	1090 (1023-4.0)		1160 (1093-5.0)
ALTERNATE	(1233-4.4)	(1523-6.0)		(1593-7.0)

3. BRG FLUCTUATIONS UP TO 7° ON 148° OUTBOUND LEG BTN 4 AND 5NM.
 4. IF MISSED APCH CONDUCTED PRIOR TO NDB CLIMB NOT ABV 2500ft UNTIL NDB.

Changes: AFRU+PAL, Editorial.

SRINB01-179