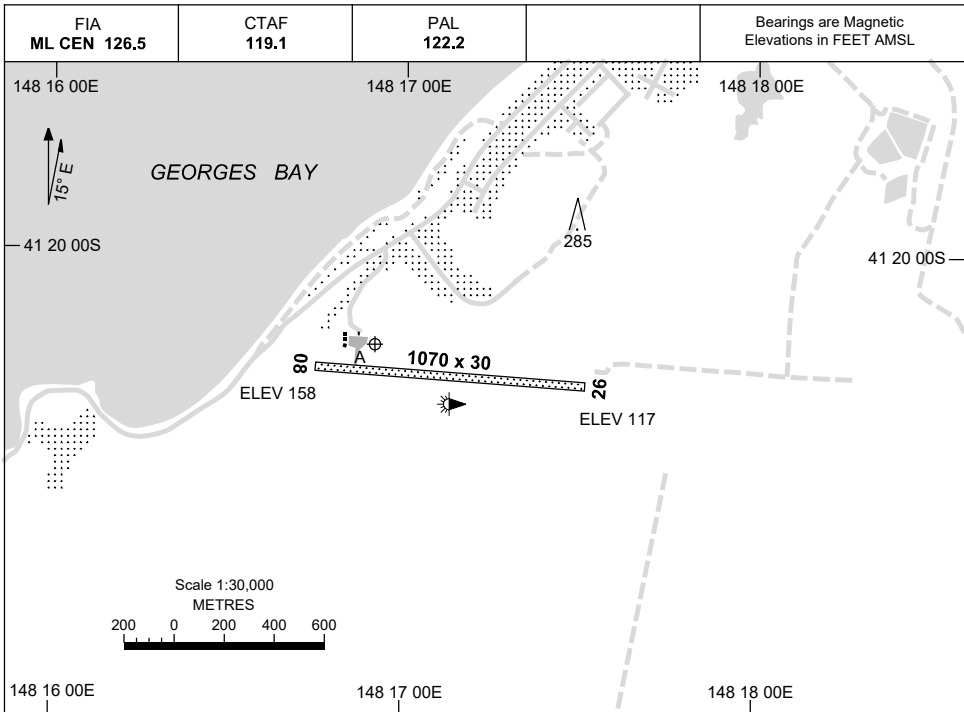


5 SEP 2024

AD ELEV 158  
41 20 12S 148 16 55E

AERODROME CHART  
**SAINT HELENS, TAS (YSTH)**



	<b>AERODROME LIGHTING</b>
<b>RWY</b>	TAXIWAY : BLUE EDGE RL : PAL 122.2 , SDBY (EMERG, MANUAL ACT, 45 MIN PN, ARO 03 6376 7900)
<b>08</b> <small>079</small>	LIRL
<small>259</small> <b>26</b>	LIRL

**NOTES**

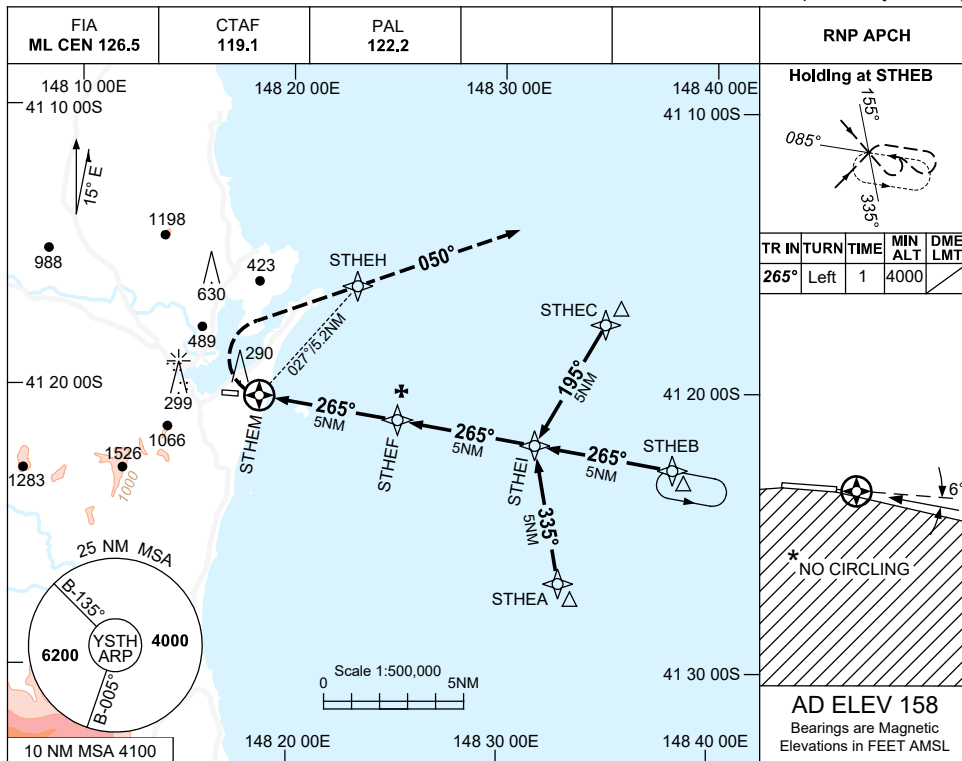
1. NIGHT CIRCUITS MUST REMAIN E OF ST HELENS TOWN AND OVER WATER WHEN AIRCRAFT ARE WEST OF THE AERODROME.
2. AWIS (PHONE) 03 6283 8606
3. FIA FREQ 126.5 AVBL CIRCUIT AREA.

Changes: BUILDING AND TWY, Editorial.

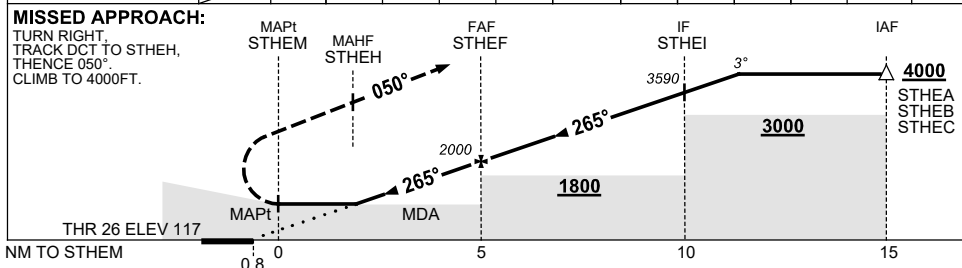
STHAD01-180

15 JUN 2023

SAINT HELENS, TAS (YSTH)



NM TO NEXT WPT	STHEM	0.9	1	2	3	4	STHEF	1	2	3	4	STHEI	1.3
ALT (3° APCH PATH)		700	720	1040	1360	1680	2000	2320	2640	2950	3270	3590	4000



**NOTES**

CATEGORY	A	B	C	D
LNAV	700 (583-3.3)		NOT APPLICABLE	
CIRCLING *	1050 (892-2.0)	1240 (1082-2.4)		
ALTERNATE	(1392-4.0)	(1582-4.4)		

\* 1. NO CIRCLING SOUTH OF RWY 08/26.  
2. AWIS (PHONE) 03 6283 8606

Changes: CHART TITLE, PBN SPECIFICATION BOX, Editorial.

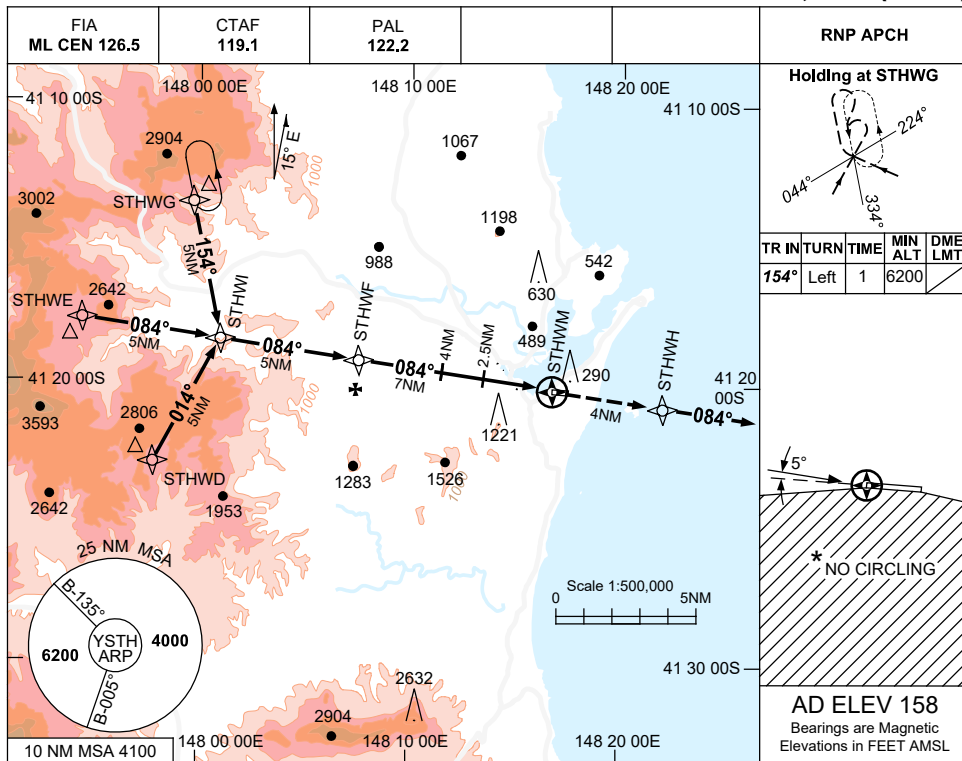
STHGN01-175

USE QNH

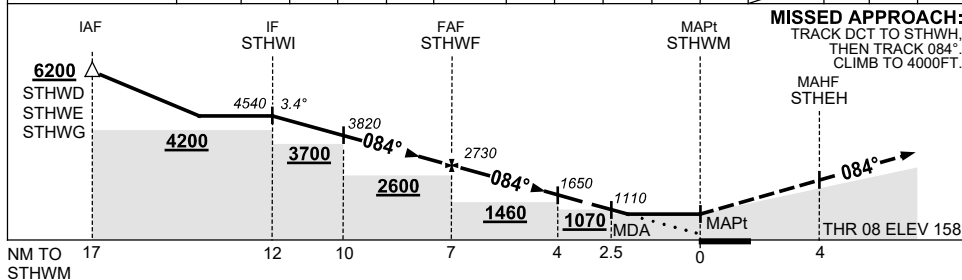
RNP RWY 08

15 JUN 2023

SAINT HELENS, TAS (YSTH)



NM TO NEXT WPT	STHWI	4	3	2	1	STHWF	6	5	4	2.5	1.8	STHWM		
ALT (3.4° APCH PATH)		4540	4180	3820	3460	3100	2730	2370	2010	1650	1110	860		



**NOTES**

CATEGORY	A	B	C	D
LNAV	<b>860 (702-3.5)</b>		<b>NOT APPLICABLE</b>	
CIRCLING *	<b>1050 (892-2.0)</b>	<b>1240 (1082-2.4)</b>		
ALTERNATE	(1392-4.0)	(1582-4.4)		

- \* 1. NO CIRCLING SOUTH OF RWY 08/26.
- 2. AWIS (PHONE) 03 6283 8606

Changes: CHART TITLE, PBN SPECIFICATION BOX, Editorial.

STHGN02-175