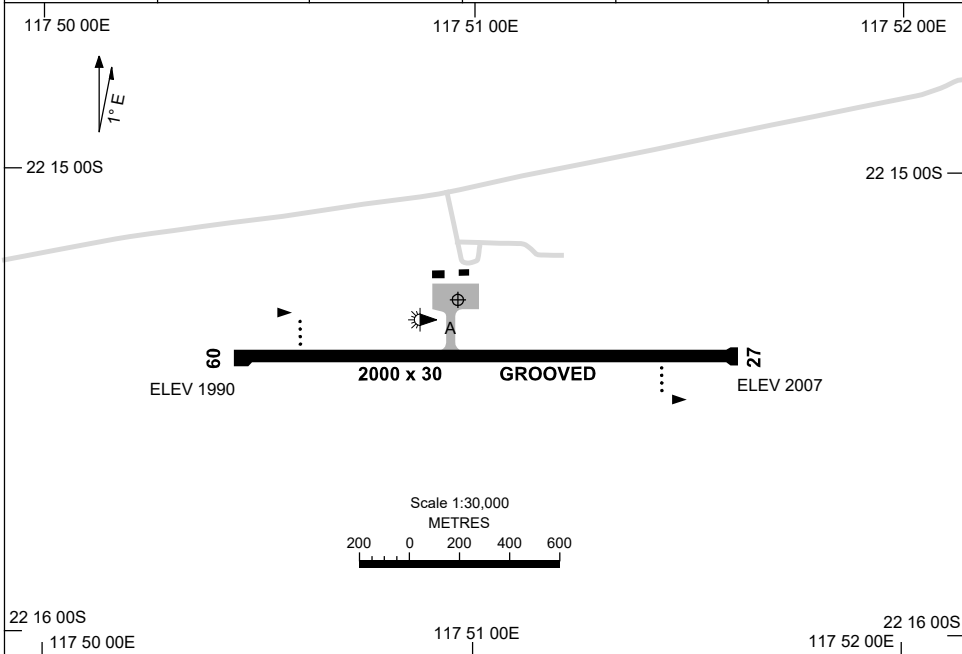


5 SEP 2024

AD ELEV 2008  
22 15 17S 117 50 58E

AERODROME CHART  
**SOLOMON, WA (YSOL)**

AWIS 128.65	FIA ML CEN 125.7	CTAF+AFRU 126.7	PAL+AA 120.25	UNICOM 126.7	Bearings are Magnetic Elevations in FEET AMSL
----------------	---------------------	--------------------	------------------	-----------------	--



AERODROME LIGHTING	
<b>RWY</b>	TAXIWAY : BLUE EDGE RL : PAL+AA 120.25 , SDBY (20 SEC) , PTBL 90 MIN PN
<b>09</b> <small>089</small>	PAPI 3.0° 49FT LIRL PTBL
<small>269</small> <b>27</b>	PAPI 3.0° 49FT LIRL PTBL

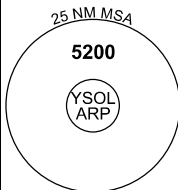
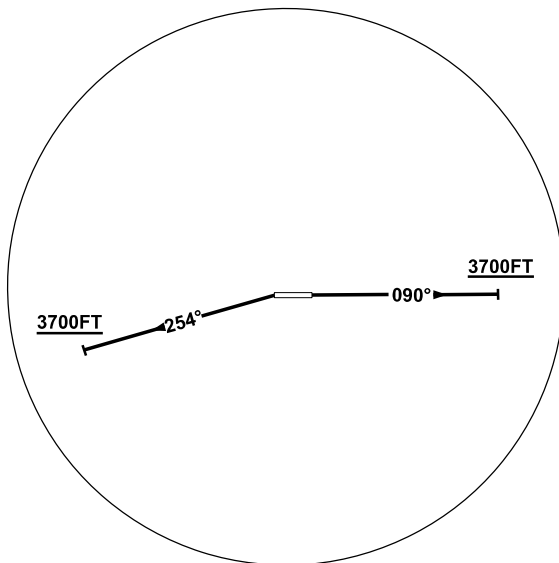
**NOTES**

- AFRU 126.7 (YBGD) NOT AVBL ON GROUND. FREQ CONFIRMATION BY YSOL UNICOM ON RECEIPT OF TAXI DEP CALL.
- FIA FREQ 125.7 AVBL IN CIRCUIT AREA.

24 MAR 2022

AWIS 128.65	FIA ML CEN 125.7	CTAF+AFRU 126.7	PAL+AA 120.25	UNICOM 126.7	Bearings are Magnetic Elevations in FEET AMSL
----------------	---------------------	--------------------	------------------	-----------------	--

NOT TO SCALE



10 NM MSA 5200

**SOLOMON ONE DEPARTURE**

**RWY 09**

- GRAD 4.0% to 3700FT thence 3.3%
- Track 090°
- At or above 3700FT turn as required
- Continue to climb to 5200FT
- Intercept flight plan route

**RWY 27**

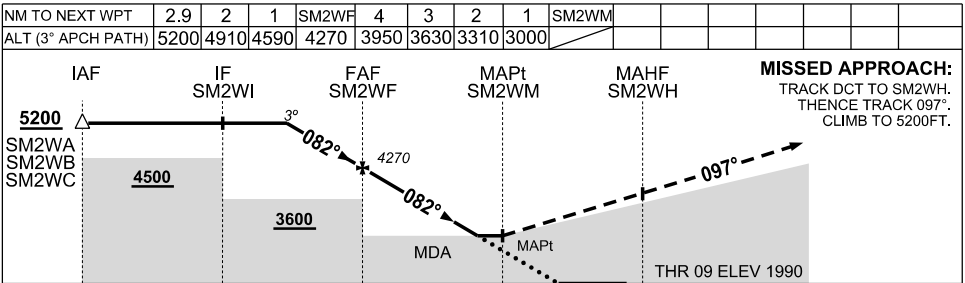
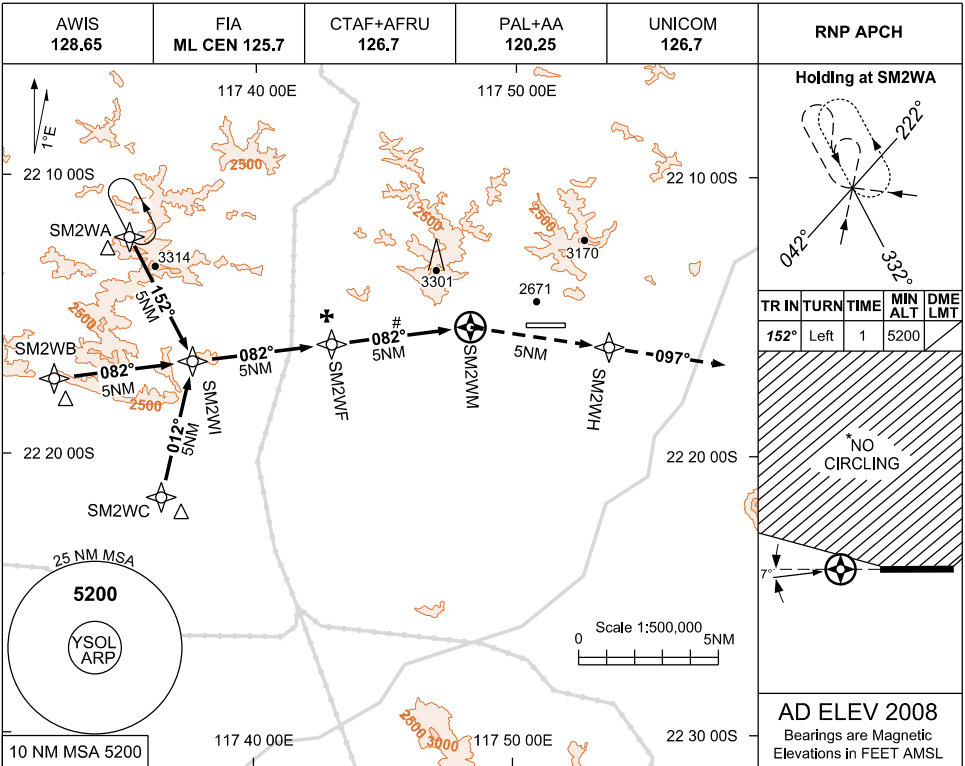
- GRAD 4.0% to 3700FT thence 3.3%
- When passing DER Track 254°
- At or above 3700FT turn as required
- Continue to climb to 5200FT
- Intercept flight plan route

USE QNH

RNP RWY 09

30 NOV 2023

SOLOMON, WA (YSOL)



**NOTES**

1. MAX IAS:  
INITIAL 210KT.
2. AFRU NOT AVBL ON  
GND
- \*3. NO CIRCLING NORTH  
OF RWY
- #4. ABANDONED DIRT  
STRIP APPROX 5NM  
WEST OF YSOL

CATEGORY	A	B	C	D
LNAV	<b>3000</b> (1010 - 5.0)			<b>NOT AUTHORISED</b>
CIRCLING*	<b>3000</b> (992 - 2.4)		<b>3610</b> (1602 - 4.0)	
ALTERNATE	(1492 - 4.4)		(2102 - 6.0)	

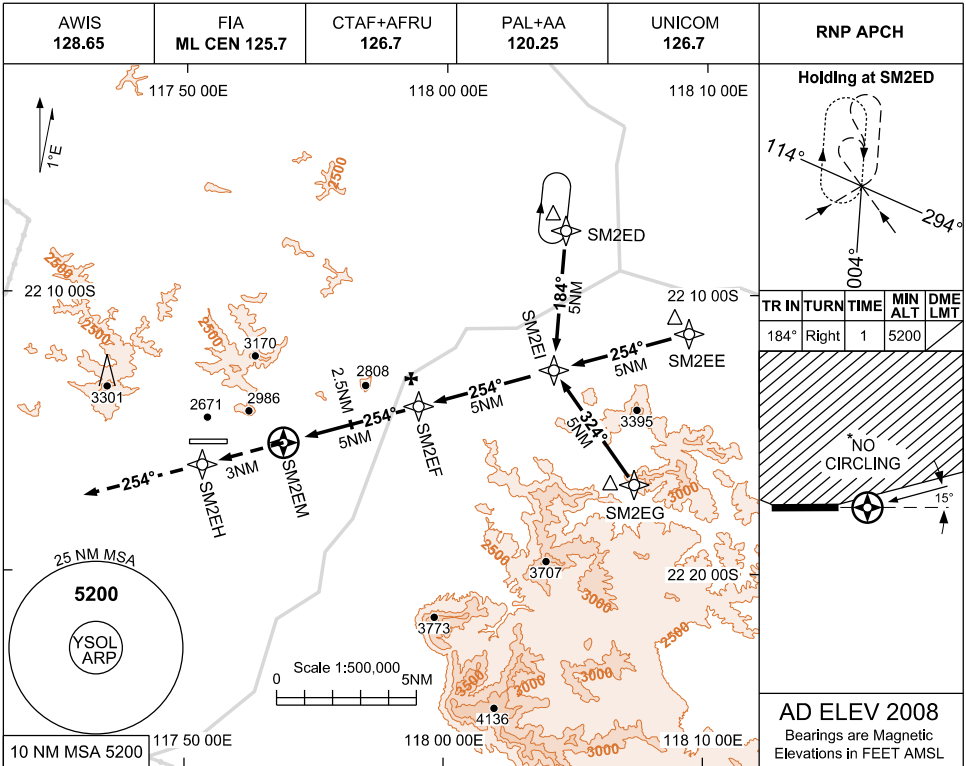
Changes: CHART TITLE, EDITORIAL

SOLGN01-177

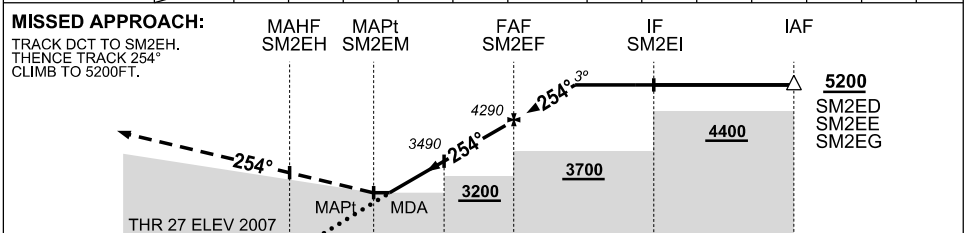
USE QNH

RNP RWY 27  
SOLOMON, WA (YSOL)

30 NOV 2023



NM TO NEXT WPT	SM2EM	0,3	1	2	3	4	SM2EF	1	2	2,9				
ALT (3° APCH PATH)		2800	3010	3330	3650	3970	4290	4610	4920	5200				



CATEGORY	A	B	C	D	NOTES
LNAV	2800 (792 - 4.5)			NOT AUTHORISED	1. MAX IAS: INITIAL 210KTS 2. AFRU NOT AVBL ON GND *3. NO CIRCLING NORTH OF RWY
CIRCLING*	3000 (992 - 2.4)		3610 (1602 - 4.0)		
ALTERNATE	(1492 - 4.4)		(2102 - 6.0)		

Changes: CHART TITLE, EDITORIAL

SOLGN02-177