

AD ELEV 2934
28 37 13S 151 59 26E

AERODROME CHART
STANTHORPE, QLD (YSPE)

1 DEC 2022

<p>FIA BN CEN 121.2</p>	<p>CTAF 126.7</p>	<p>PAL+AA 120.05</p>		<p>Bearings are Magnetic Elevations in FEET AMSL</p>
<p>The chart displays a runway (08/26) measuring 1711 x 30 meters. The runway is oriented 11 degrees East of true. Elevation points are marked at ELEV 2859 and ELEV 2934. A scale bar indicates 1:40,000. Grid coordinates are provided: 151 58 00E, 151 59 00E, 152 00 00E, 28 37 00S, and 28 38 00S.</p>				
<p>RWY</p>	<p>AERODROME LIGHTING</p>			
<p>08 <small>080</small> 26 <small>260</small></p>	<p>TAXIWAY : BLUE EDGE RL : PAL+AA 120.05</p>			
	<p>LIRL</p>			
<p>NOTES</p>	<p>1. BN CEN FIA 121.2 AVBL IN CIRCUIT AREA.</p>			

Changes: PTBL REMOVED.

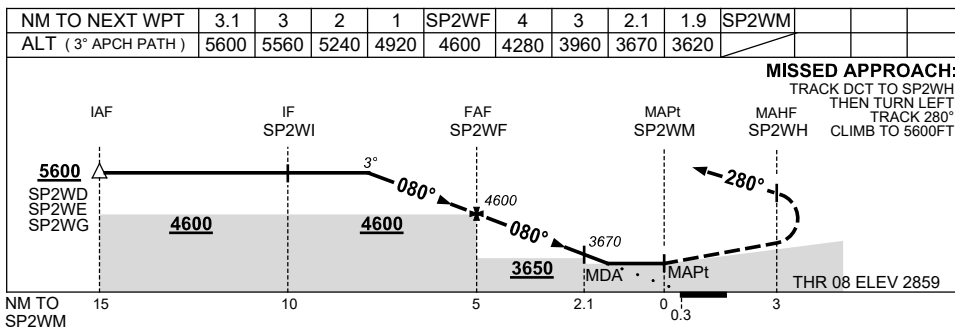
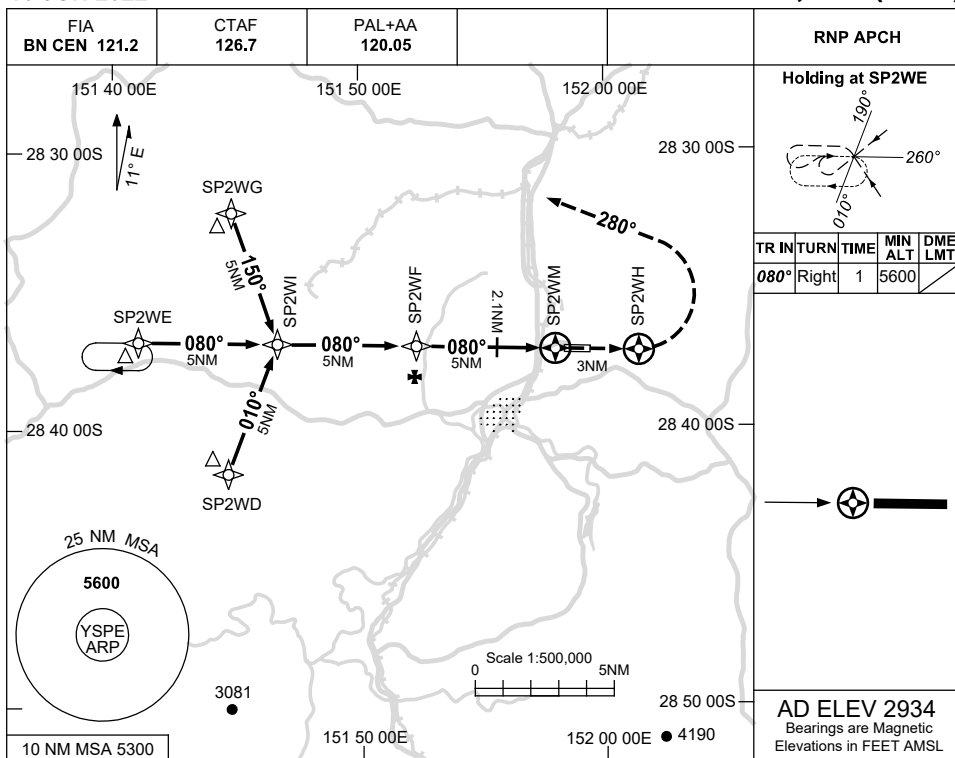
SPEAD01-173

USE QNH

RNP RWY 08

STANTHORPE, QLD (YSPE)

16 JUN 2022



NOTES

CATEGORY	A	B	C	D
LNAV	3620 (761-4.3)			NOT APPLICABLE
CIRCLING	3800 (866-2.4)		4030 (1096-4.0)	
ALTERNATE	(1366-4.4)		(1596-6.0)	

1. MAX IAS:
INITIAL : 210KT.

Changes: PAL+AA.

SPEGN01-171