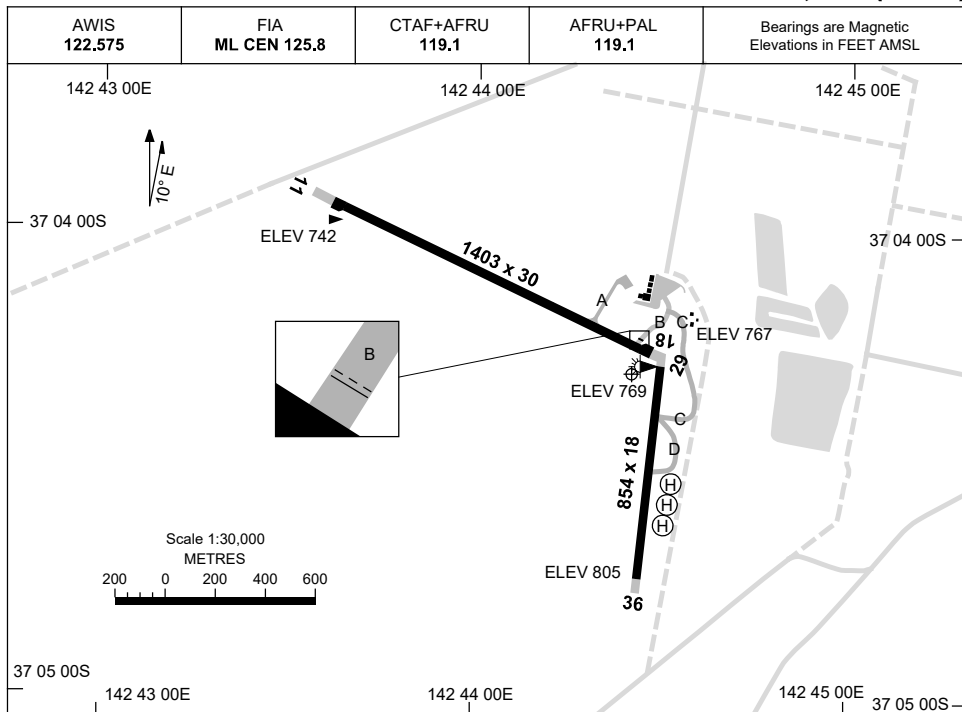


28 NOV 2024

AD ELEV 807
37 04 18S 142 44 25E

AERODROME CHART
STAWELL, VIC (YSWL)



| | AERODROME LIGHTING | |
|------------------------------|--|--|
| RWY | TAXIWAY : BLUE EDGE ON A AND B RL : AFRU+PAL 119.1, SDBY (15 SEC) | |
| 11 <small>104</small> | LIRL | |
| <small>284</small> 29 | LIRL | |
| 18 <small>175</small> | NIL | |
| <small>355</small> 36 | NIL | |

NOTES

1. AWIS ACTIVATED BY 1 SEC TRANSMISSION.

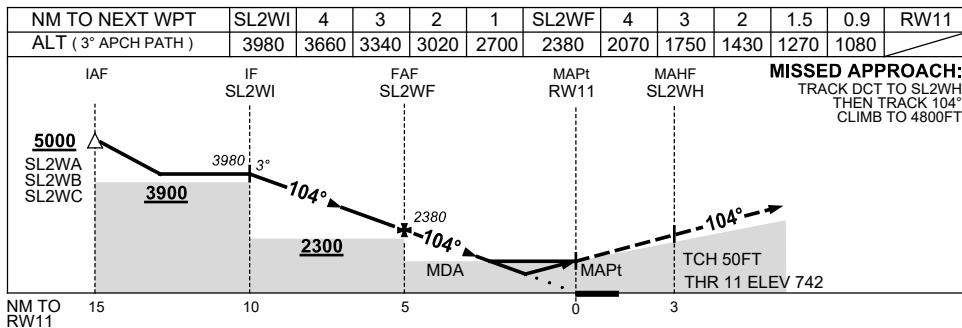
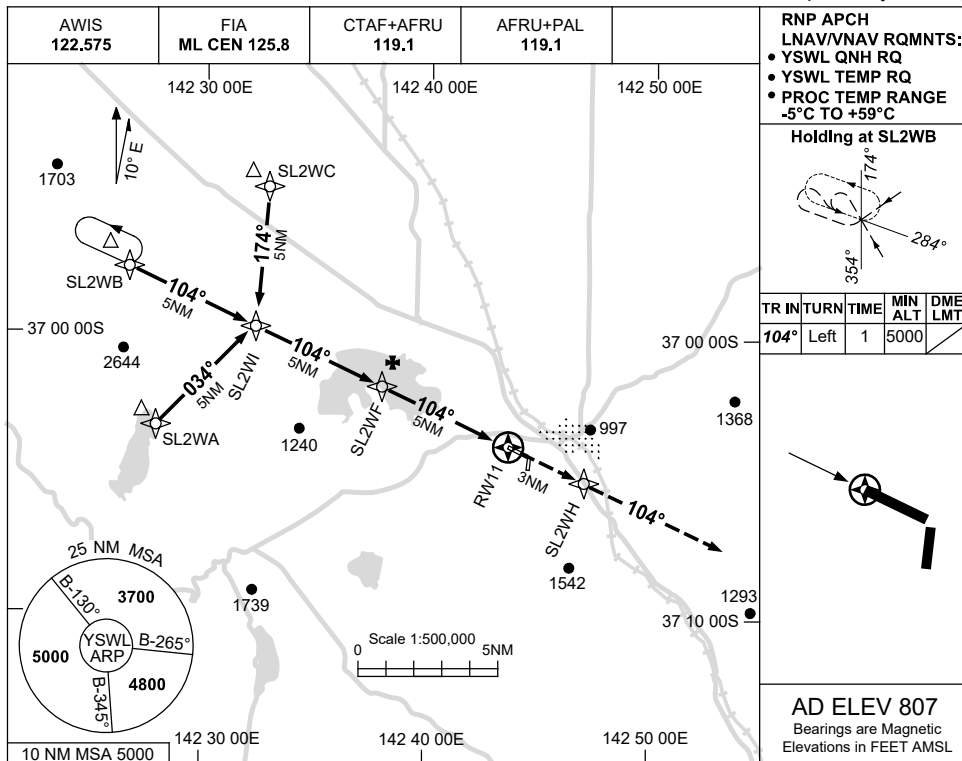
Changes: SDBY SWITCHOVER TIME, Editorial.

SWLAD01-181

USE QNH

RNP RWY 11
STAWELL, VIC (YSWL)

15 JUN 2023



NOTES

| CATEGORY | A | B | C | D |
|-----------|-----------------|----------------|----------------|----------------|
| LNAV/VNAV | | 1080 (338-1.9) | | NOT APPLICABLE |
| LNAV | | 1270 (528-3.0) | | |
| CIRCLING | 2170 (1363-2.4) | | 2470(1663-4.0) | |
| ALTERNATE | (1863-4.4) | | (2163-6.0) | |

1. MAX IAS:
INITIAL : 210KT.
HOLDING: 210KT.

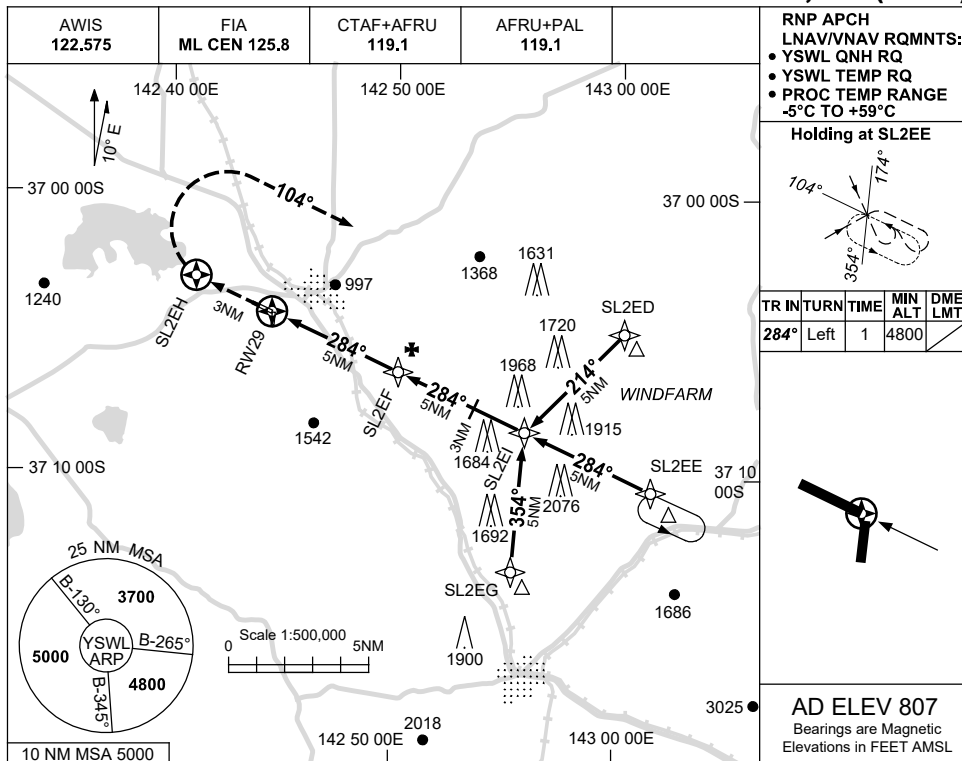
Changes: MSA, MISSED APCH TEXT, WPT NAMING, CHART TITLE, PBN SPECIFICATION BOX, Editorial. SWLGN01-175

USE QNH

RNP RWY 29

STAWELL, VIC (YSWL)

15 JUN 2023

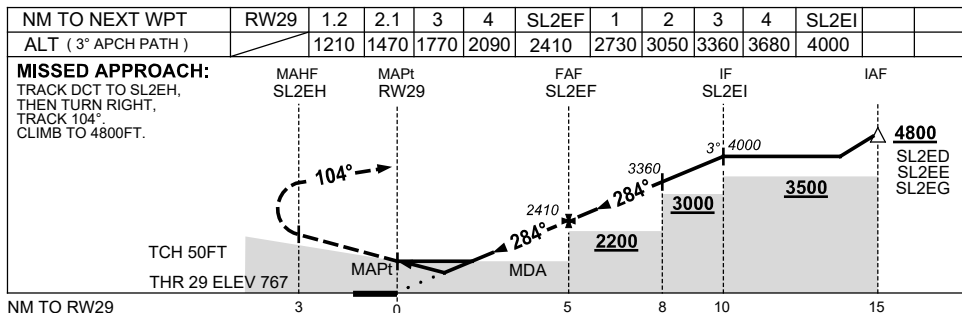


RNP APCH
 LNAV/VNAV RQMNTS:
 • YSWL QNH RQ
 • YSWL TEMP RQ
 • PROC TEMP RANGE
 -5°C TO +59°C

Holding at SL2EE

| TR | TURN | TIME | MIN ALT | DME LMT |
|------|------|------|---------|---------|
| 284° | Left | 1 | 4800 | |

AD ELEV 807
 Bearings are Magnetic
 Elevations in FEET AMSL



NOTES

| CATEGORY | A | B | C | D |
|-----------|-----------------|----------------|----------------|----------------|
| LNAV/VNAV | | 1210 (443-2.5) | | NOT APPLICABLE |
| LNAV | | 1470 (703-4.0) | | |
| CIRCLING | 2170 (1363-2.4) | | 2470(1663-4.0) | |
| ALTERNATE | (1863-4.4) | | (2163-6.0) | |

1. MAX IAS:
 INITIAL : 210KT.
 HOLDING: 210KT.

Changes: MSA, START ALT, MIN HOLD ALT, WPT NAMING, CHART TITLE, PBN SPEC BOX, Editorial.

SWLGN02-175