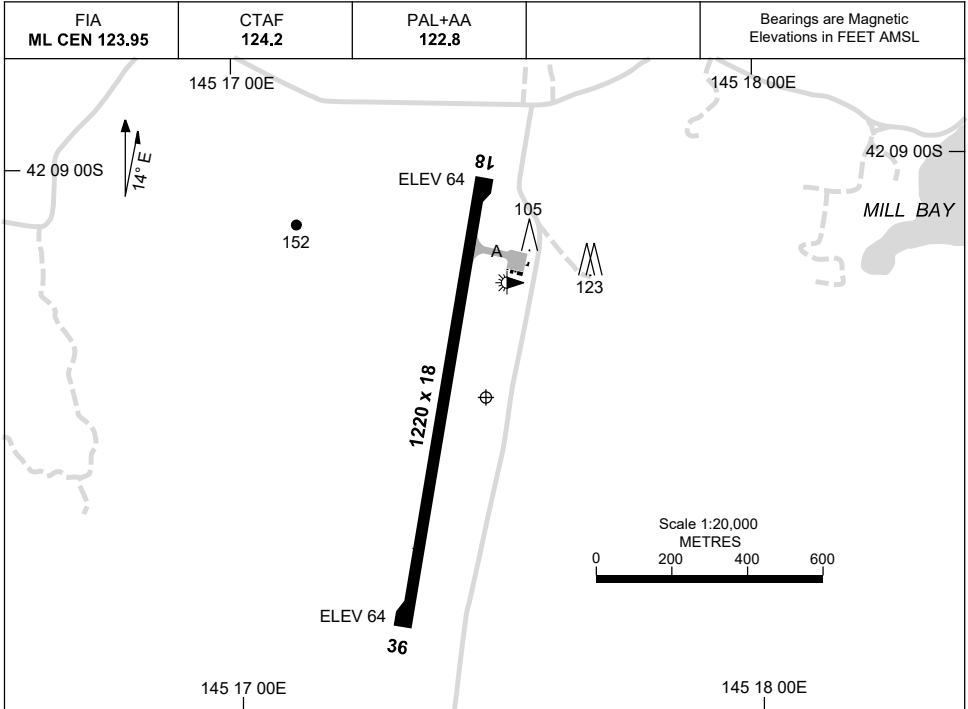


7 SEP 2023

AD ELEV 66
42 09 20S 145 17 29E

AERODROME CHART
STRAHAN, TAS (YSRN)



	AERODROME LIGHTING
RWY	TAXIWAY : BLUE EDGE RL : PAL+AA 122.8
18 <small>178</small>	LIRL
<small>358</small> 36	LIRL

NOTES

1. AWIS (PHONE) 03 6283 8607
2. ML CEN FIA 123.95 AVBL IN CIRCUIT AREA.

Changes: THR ELEV.

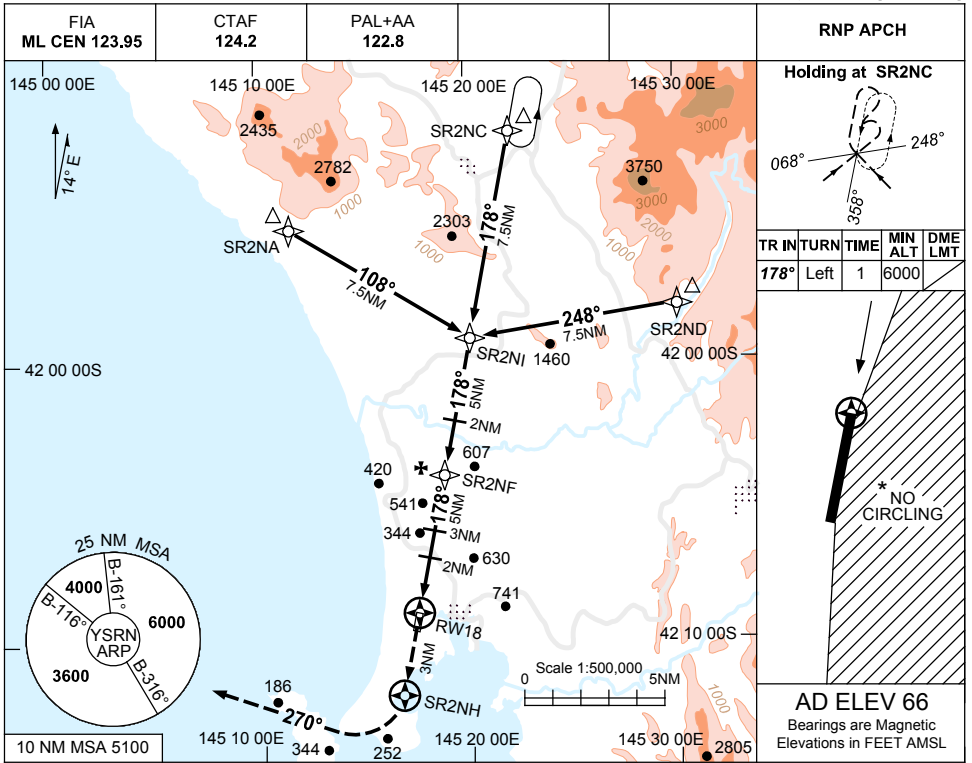
SRNAD01-176

USE QNH

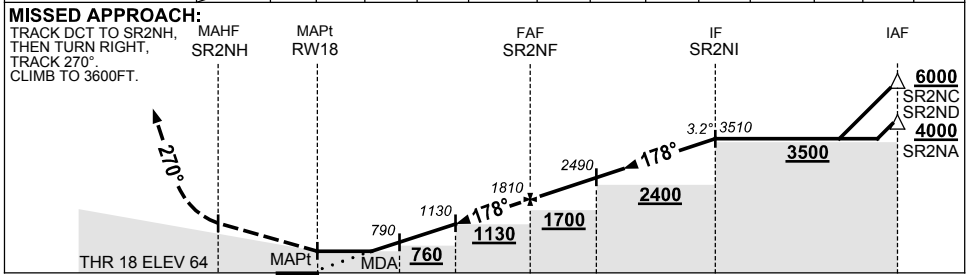
RNP RWY 18

7 SEP 2023

STRAHAN, TAS (YSRN)



NM TO NEXT WPT	RW18	1.6	2	3	4	SR2NF	1	2	3	4	SR2NI		
ALT (3.2° APCH PATH)		660	790	1130	1470	1810	2150	2490	2830	3170	3510		



NOTES

CATEGORY	A	B	C	D
LNAV	660 (594-3.2)			NOT APPLICABLE
CIRCLING *	840 (774-2.4)		1140 (1074-4.0)	
ALTERNATE	(1274-4.4)		(1574-6.0)	

- MAX IAS: INITIAL : 230KT.
- NO CIRCLING EAST OF RWY 18/36.
- AWIS (PHONE) 03 6283 8607
- COLOUR: SEE SPEC NOTICES.

Changes: THR ELEV.

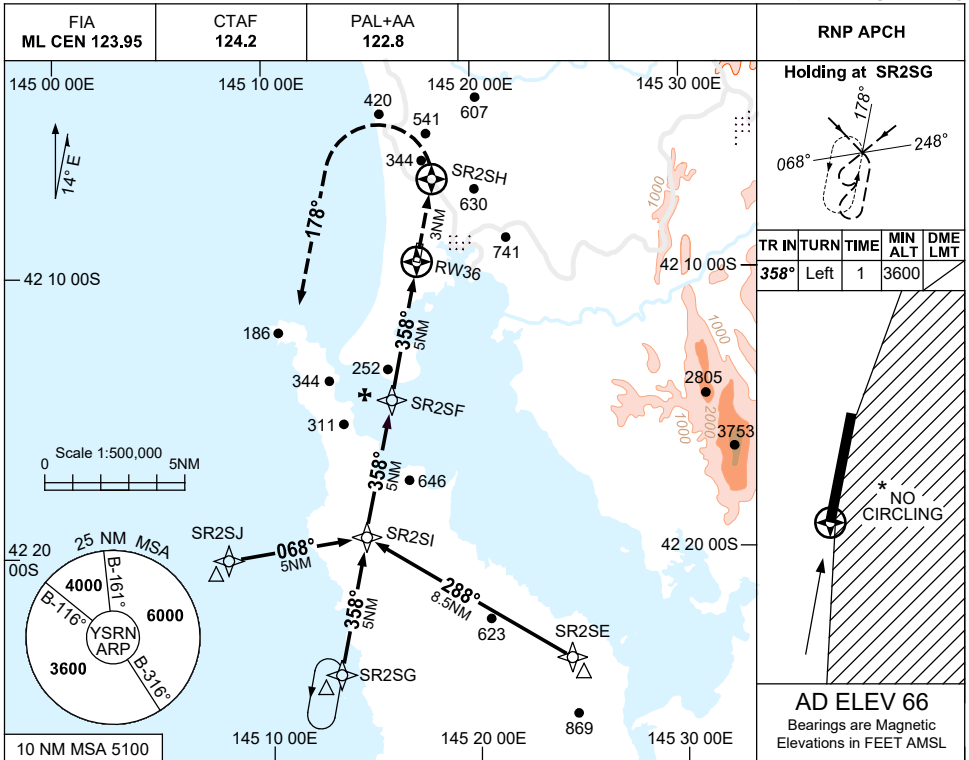
SRNGN01-176

USE QNH

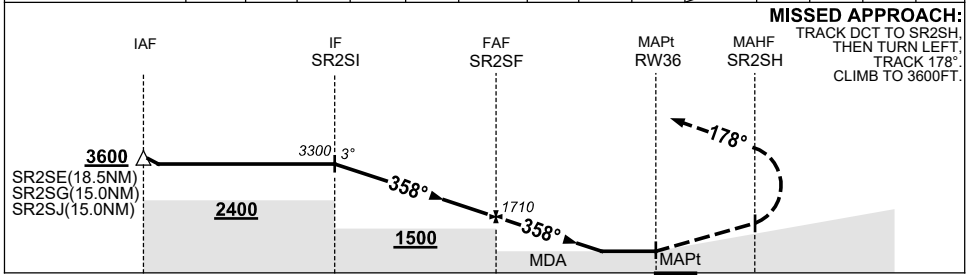
RNP S

7 SEP 2023

STRAHAN, TAS (YSRN)



NM TO NEXT WPT	SR2SI	4	3	2	1	SR2SF	4	3.2	2.3	RW36			
ALT (3° APCH PATH)	3300	2980	2660	2340	2020	1710	1390	1140	840				



CATEGORY	A	B	C	D
CIRCLING *	840 (774-2.4)		1140 (1074-4.0)	
ALTERNATE	(1274-4.4)		(1574-6.0)	
	NOT APPLICABLE			

- NOTES**
- MAX IAS: INITIAL : 230KT.
 - * NO CIRCLING EAST OF RWY 18/36.
 - AWIS (PHONE) 03 6283 8607
 - COLOUR: SEE SPEC NOTICES.

Changes: DIST ALT TABLE, FAF ALT, Editorial.

SRNGN02-176