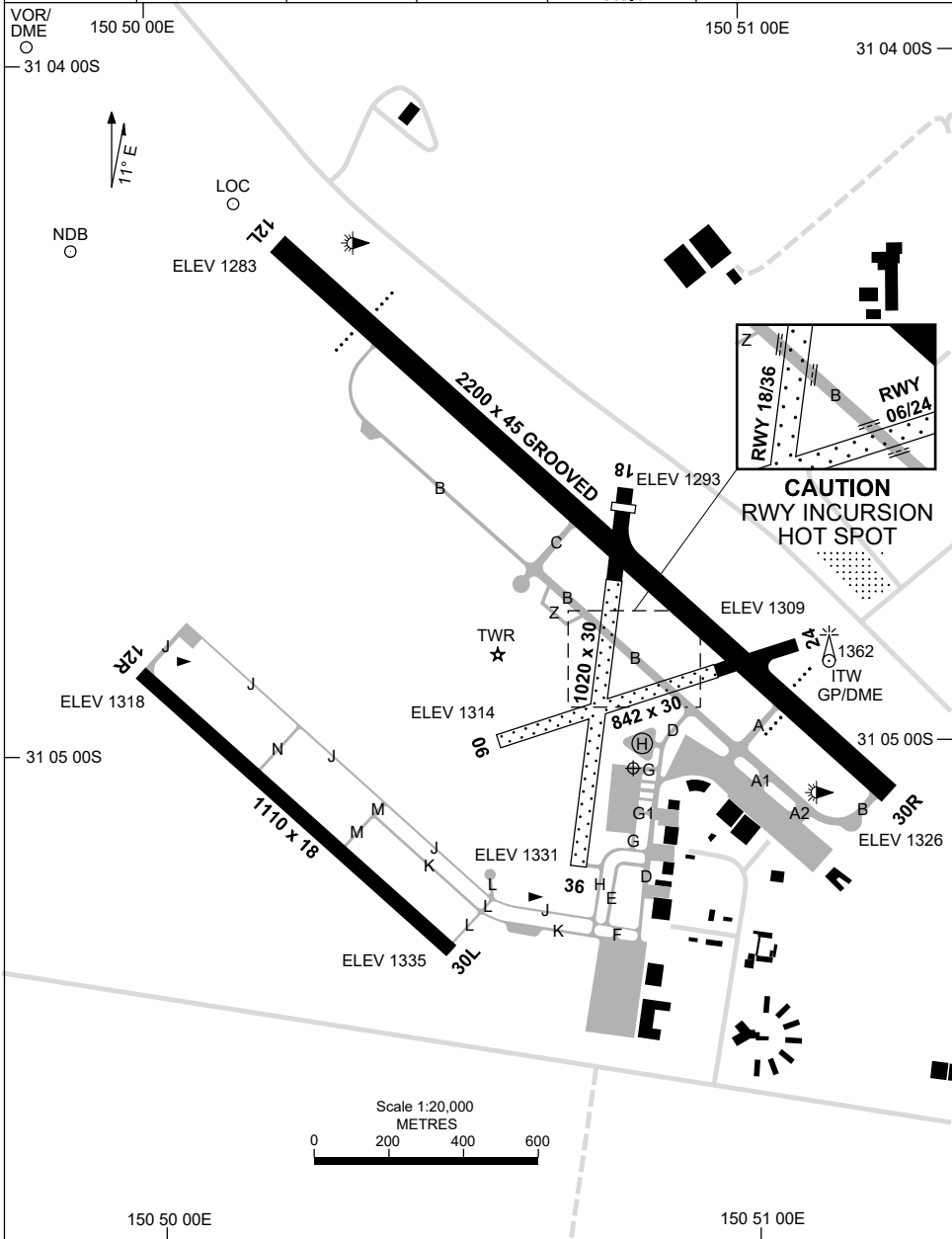


5 SEP 2024

AD ELEV 1335
31 05 02S 150 50 48E

AERODROME CHART - Page 1
TAMWORTH, NSW (YSTW)

ATIS 116.0 123.8	TWR 119.4 118.25 (HJ)	SMC 121.9	FIA (AH) BN CEN 127.1	CTAF+AFRU (AH) AFRU+PAL (AH) 119.4	Bearings are Magnetic Elevations in FEET AMSL
----------------------------	---------------------------------	---------------------	---------------------------------	-------------------------------------------------	--------------------------------------------------



Changes: RWY 12R/30L TURNING NODES REMOVED, THR 12L ELEV, Editorial.

STWAD01-180

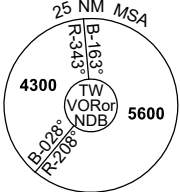
1 DEC 2022

ATIS 116.0 123.8	TWR 119.4 118.25 (HJ)	SMC 121.9	FIA (AH) BN CEN 127.1	CTAF+AFRU (AH) AFRU+PAL (AH) 119.4	Bearings are Magnetic Elevations in FEET AMSL
AERODROME LIGHTING					
RWY	TAXIWAY : GREEN CENTRELINE RL : AFRU+PAL 119.4 (AH) , SDBY (1 SEC DURING LVP , OR 8 SEC)				
12L ¹²¹ 301 30R	PAPI BOTH SIDES 3.0° 49FT MIRL PAPI BOTH SIDES 3.0° 49FT MIRL				
12R ¹²¹ 301 30L	NIL NIL				
06 ⁰⁶² 242 24	NIL NIL				
18 ¹⁷⁷ 357 36	NIL NIL				
NOTES					
1. BN CEN FIA 127.1 AVBL IN CIRCUIT AREA,					

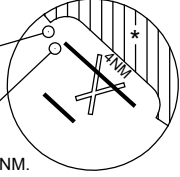
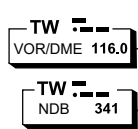
DME or GNSS ARRIVAL PROCEDURES TAMWORTH, NSW (YSTW) Page 1

24 MAR 2022

ATIS 116.0 123.8	TWR 119.4 118.25 (HJ)	SMC 121.9	FIA (AH) BN CEN 127.1	CTAF+AFRU (AH) AFRU+PAL (AH) 119.4	Bearings are Magnetic Elevations in FEET AMSL
----------------------------	---------------------------------	---------------------	---------------------------------	-------------------------------------------------	--------------------------------------------------



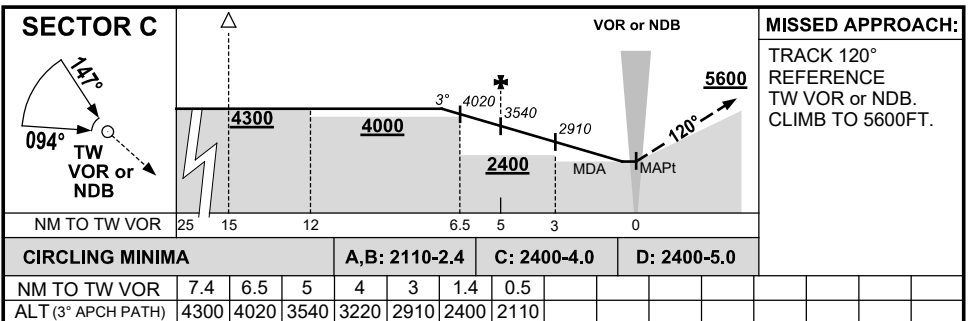
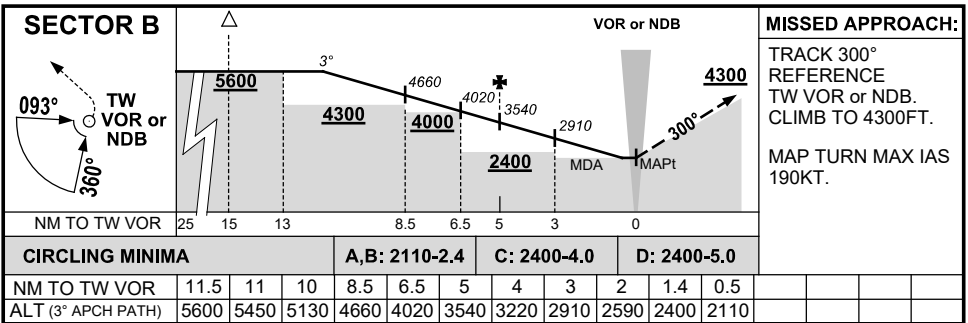
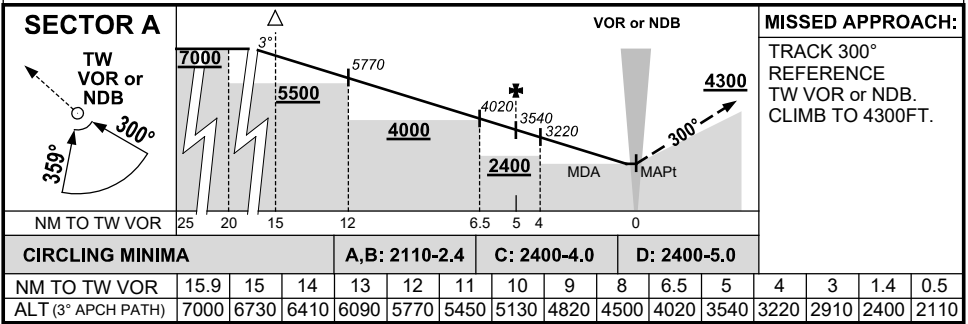
DME USING TW DME REFERENCE WAYPOINT TW VOR



* MAX IAS CIRCLING 170KT WHEN NE OF RWY 12L/30R.
 CAT A, B & C NO CIRCLING NE OF RWY 12L/30R BEYOND 4NM.
 CAT D NO CIRCLING NE OF RWY 12L/30R.

10 NM MSA 5000

AD ELEV 1335



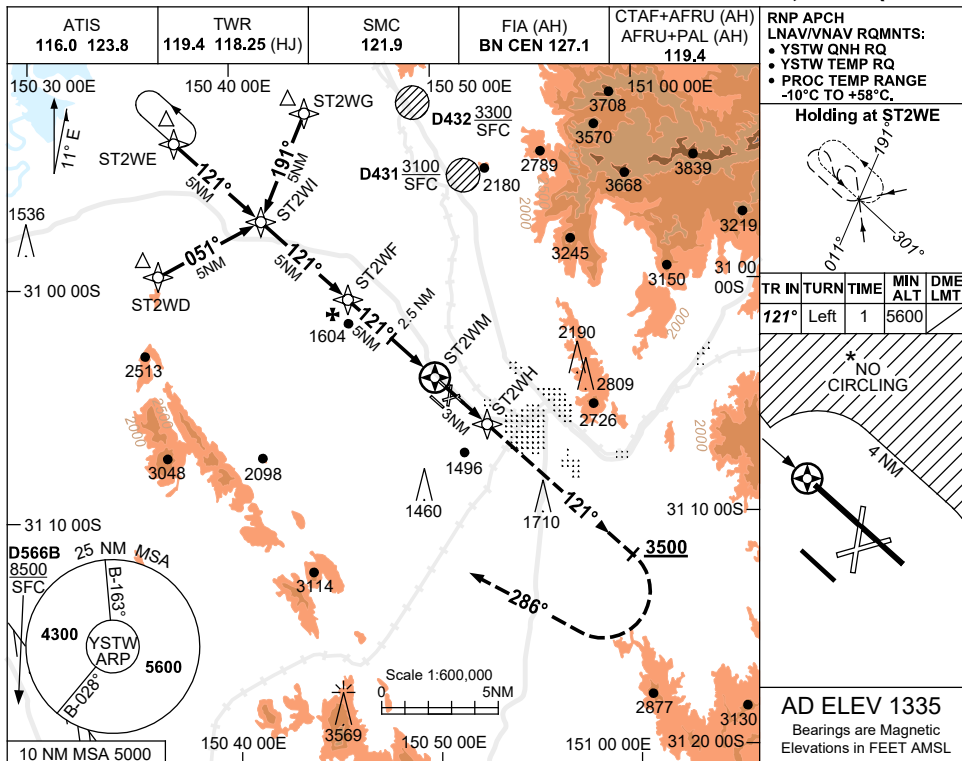
Changes: AD ELEV, Editorial.

STWDG01-170

USE QNH

RNP RWY 12L
TAMWORTH, NSW (YSTW)

5 SEP 2024



RNP APCH LNAV/VNAV RQMNTS:

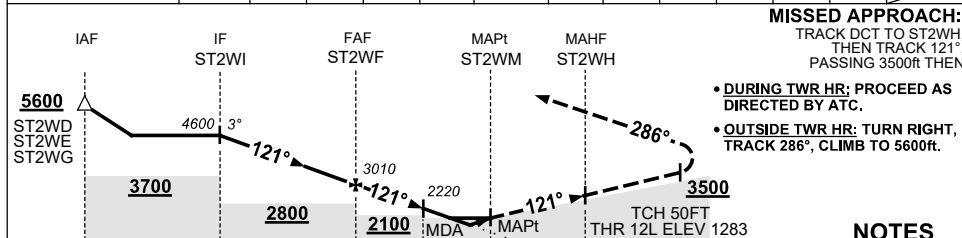
- YSTW QNH RQ
- YSTW TEMP RQ
- PROC TEMP RANGE -10°C TO +58°C.

Holding at ST2WE

TR IN	TURN TIME	MIN ALT	DME LMT
121°	Left	1	5600

AD ELEV 1335
Bearings are Magnetic
Elevations in FEET AMSL

NM TO NEXT WPT	ST2WI	4	3	2	1	ST2WF	4	3	2.5	2	1.4	0.8	ST2WM
ALT (3° APCH PATH)	4600	4280	3970	3650	3330	3010	2690	2370	2220	2060	1880	1660	



MISSED APPROACH:
TRACK DCT TO ST2WH, THEN TRACK 121°, PASSING 3500ft THEN

- DURING TWR HR; PROCEED AS DIRECTED BY ATC.
- OUTSIDE TWR HR; TURN RIGHT, TRACK 286°, CLIMB TO 5600ft.

NOTES

1. MAX IAS: INITIAL : 220KT.
2. CAT A,B&C NO CIRCLING NE OF RWY 12L/30R BEYOND 4NM. MAX IAS 170KT.
3. CAT D NO CIRCLING NE OF RWY 12L/30R.
4. HLDG NOT CONTAINED IN CTA.
5. COLOUR: SEE SPEC NOTICES.

CATEGORY	A	B	C	D
LNAV/VNAV		1660 (377-2.1)		
LNAV		1880 (597-3.4)		
CIRCLING *	2110 (775-2.4)		2400 (1065-4.0)	2400#(1065-5.0)
ALTERNATE	(1275-4.4)		(1565-6.0)	(1565-7.0)

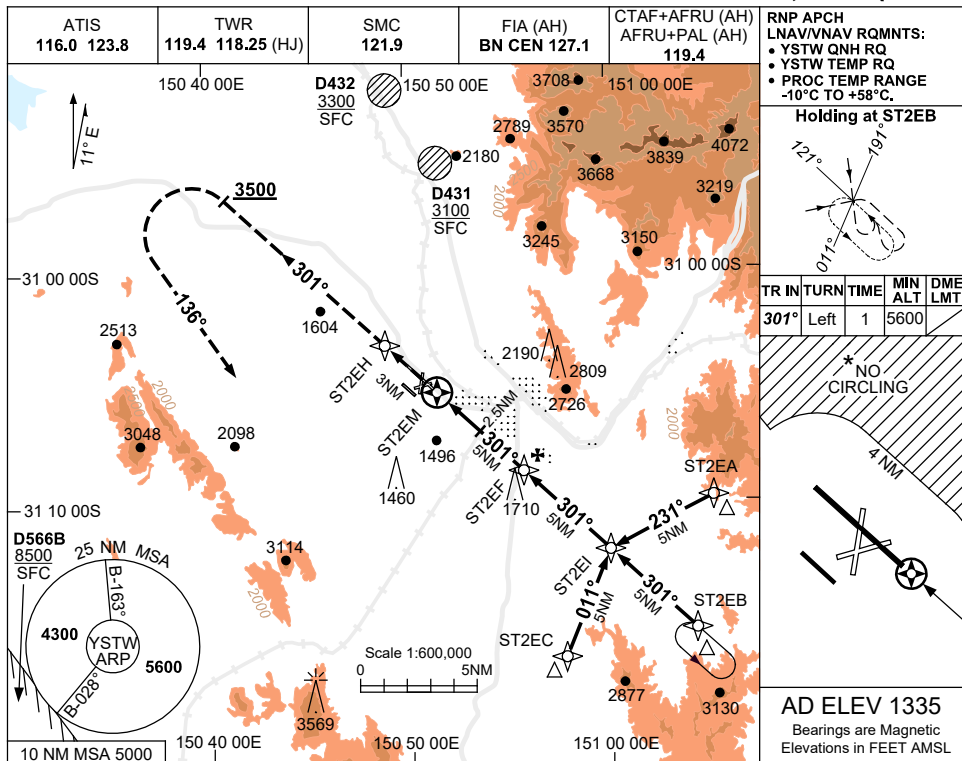
Changes: WPT NAMING CONVENTION, THR 12L ELEV, FAF-2.5NM FIX MINIMA, D432 ADDED. STWGN01-180

USE QNH

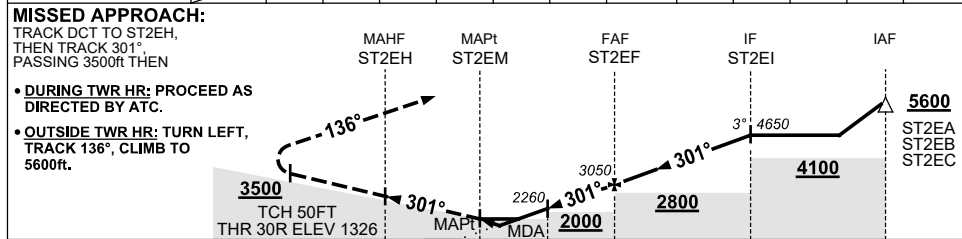
RNP RWY 30R

5 SEP 2024

TAMWORTH, NSW (YSTW)



NM TO NEXT WPT	ST2EM	0.8	1.3	2	2.5	3	4	ST2EF	1	2	3	4	ST2EI
ALT (3° APCH PATH)		1700	1870	2100	2260	2420	2740	3050	3370	3690	4010	4330	4650



NM TO ST2EM: 0.3, 1, 2.5, 5, 10, 15

NOTES

1. MAX IAS: INITIAL : 220KLT.
- * 2. CAT A,B&C NO CIRCLING NE OF RWY 12L/30R BEYOND 4NM. MAX IAS 170KLT.
- # 3. CAT D NO CIRCLING NE OF RWY 12L/30R.
4. HLDG NOT CONTAINED IN CTA.
5. COLOUR: SEE SPEC NOTICES.

CATEGORY	A	B	C	D
LNAV/VNAV		1700 (374-2.1)		
LNAV		1870 (544-3.1)		
CIRCLING *	2110 (775-2.4)		2400 (1065-4.0)	2400#(1065-5.0)
ALTERNATE	(1275-4.4)		(1565-6.0)	(1565-7.0)

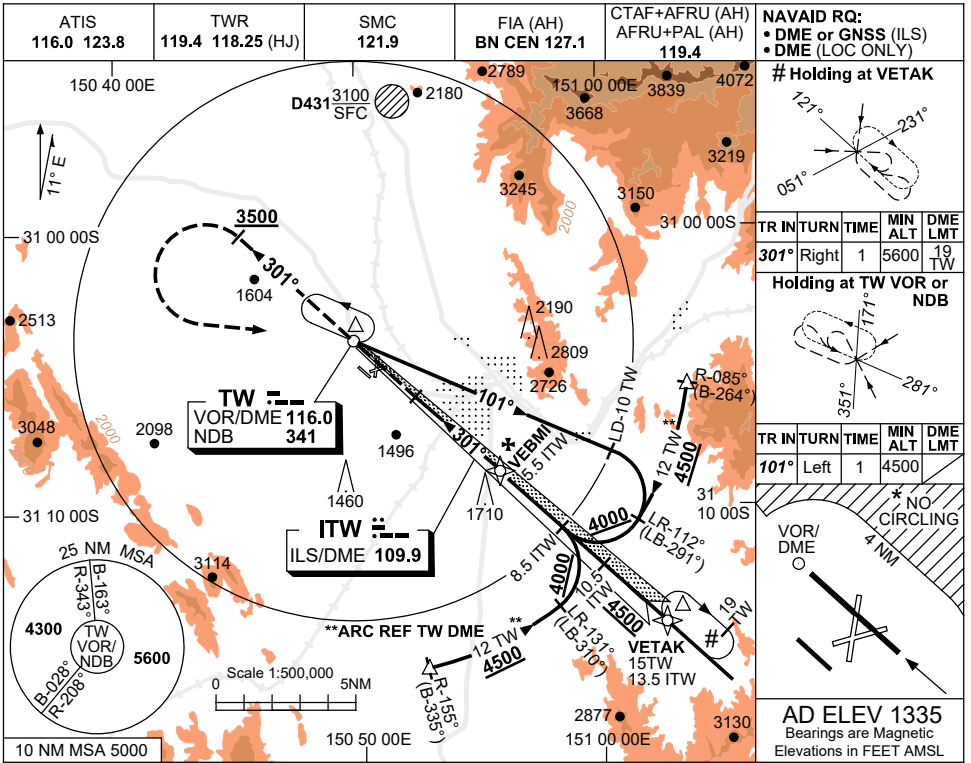
Changes: WPT NAMING CONVENTION, FAF-2.5NM FIX MINIMA, D432 ADDED.

STWGN02-180

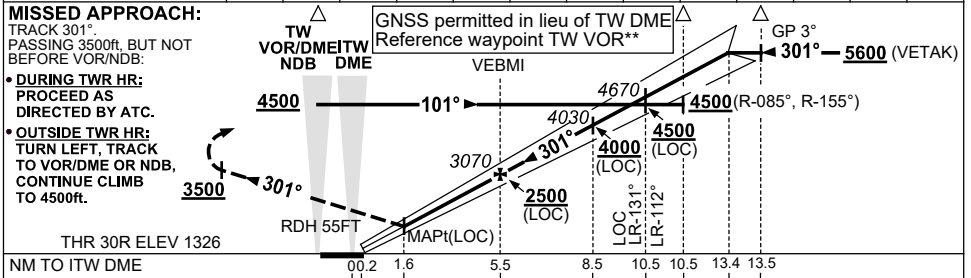
USE QNH

ILS-Z or LOC-Z RWY 30R
TAMWORTH, NSW (YSTW)

28 NOV 2024



DIST TO ITW DME	2.1	3	4	5	5.5	7	8	8.5	10	10.5	12	13	13.4
ALT (3° APCH PATH)	1990	2280	2600	2910	3070	3550	3870	4030	4500	4670	5140	5460	5600



NM TO ITW DME	00.2	1.6	5.5	8.5	10.5	10.5	13.4	13.5
NM TO RWY 30R	0	1.5	5.4	8.4	10.4	13.3	13.4	

CATEGORY	A	B	C	D
S-I ILS		1740 (414)	2.4 (VIS 1.8 WITH ACTUAL QNH)	
S-I LOC/DME		1990 (664-3.8)		
CIRCLING*	2110 (775-2.4)	2400 (1065-4.0)	2400# (1065-5.0)	
ALTERNATE	(1275-4.4)	(1565-6.0)	(1565-7.0)	

- NOTES**
- MAX IAS: HOLDING AT VETAK : 210KT.
 - CAT A,B&C NO CIRCLING NE OF RWY 12L/30R BEYOND 4NM. MAX IAS 170KT.
 - CAT D NO CIRCLING NE OF RWY 12L/30R.
 - COLOUR: SEE SPEC NOTICES.

Changes: WPT BRADD RENAMED TO VETAK.

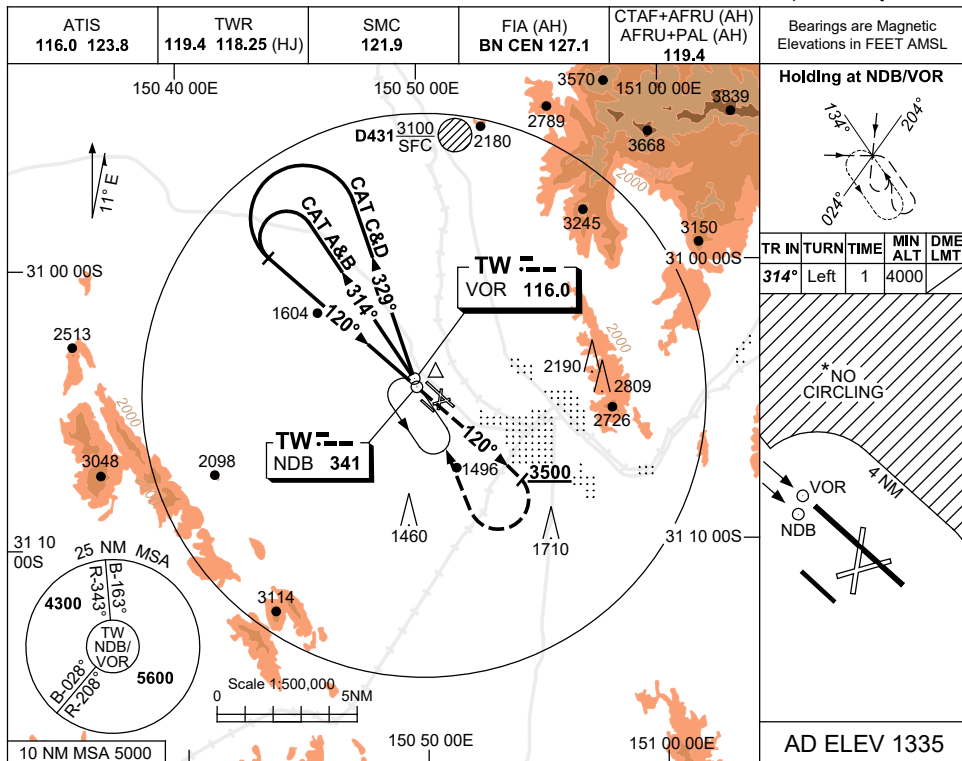
STWII01-181

USE QNH

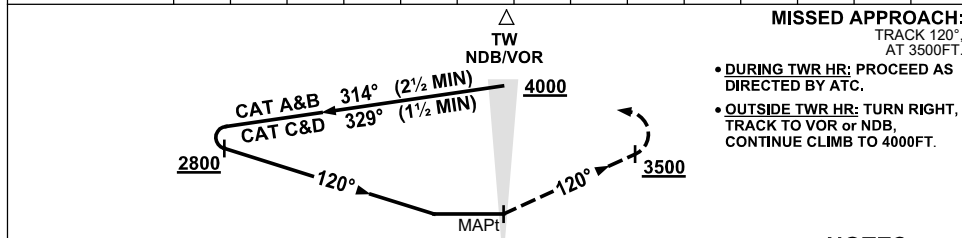
NDB-A or VOR-A

16 JUN 2022

TAMWORTH, NSW (YSTW)



DME DIST	NOT APPLICABLE				
ALT					



NOTES

1. MAX IAS:
HOLDING: 210KT.
INITIAL:
CAT C&D 185KT.
- *2. CAT A,B&C NO CIRCLING NE OF RWY 12L/30R BEYOND 4NM. MAX IAS 170KT.
3. CAT D NO CIRCLING NE OF RWY 12L/30R.
4. COLOUR: SEE SPEC NOTICES.

CATEGORY	A	B	C	D
CIRCLING *	2170 (835-2.4)	2400 (1065-4.0)	2400#(1065-5.0)	
ALTERNATE	(1335-4.4)	(1565-6.0)	(1565-7.0)	

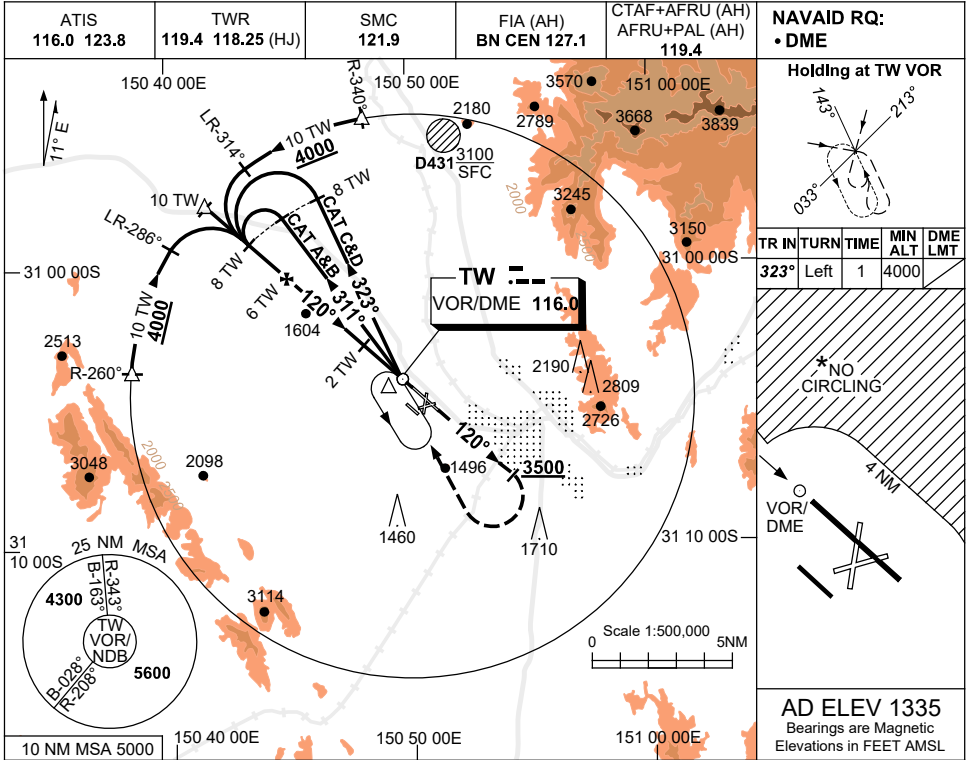
Changes: UNLIT 1710FT OBST.

STWNB01-171

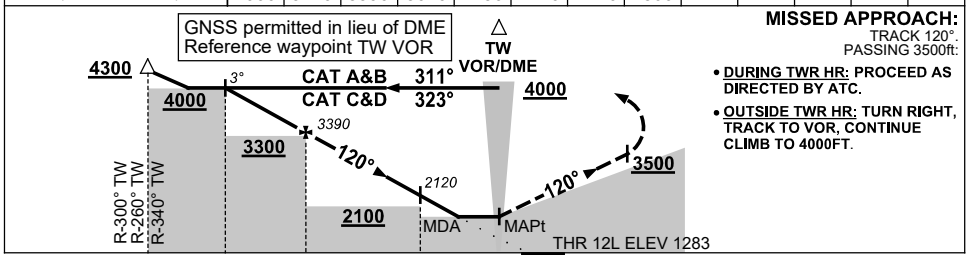
USE QNH

VOR RWY 12L
TAMWORTH, NSW (YSTW)

5 SEP 2024



DIST TO TW DME	7.9	7	6	5	4	3	2	1.2				
ALT (3° APCH PATH)	4000	3710	3390	3070	2750	2440	2120	1860				



CATEGORY	A	B	C	D
S-I VOR/DME	1860 (577-3.3)			
CIRCLING *	2110 (775-2.4)	2400 (1065-4.0)	2400 # (1065-5.0)	
ALTERNATE	(1275-4.4)	(1565-6.0)	(1565-7.0)	

NOTES

1. MAX IAS: INITIAL : 210KT.
2. CAT A,B&C NO CIRCLING NE OF RWY 12L/30R BEYOND 4NM. MAX IAS 170KT.
3. CAT D NO CIRCLING NE OF RWY 12L/30R.
4. COLOUR: SEE SPEC NOTICES.

Changes: THR 12L ELEV, DIST-ALT TABLE, FAF-2NM FIX MINIMA.

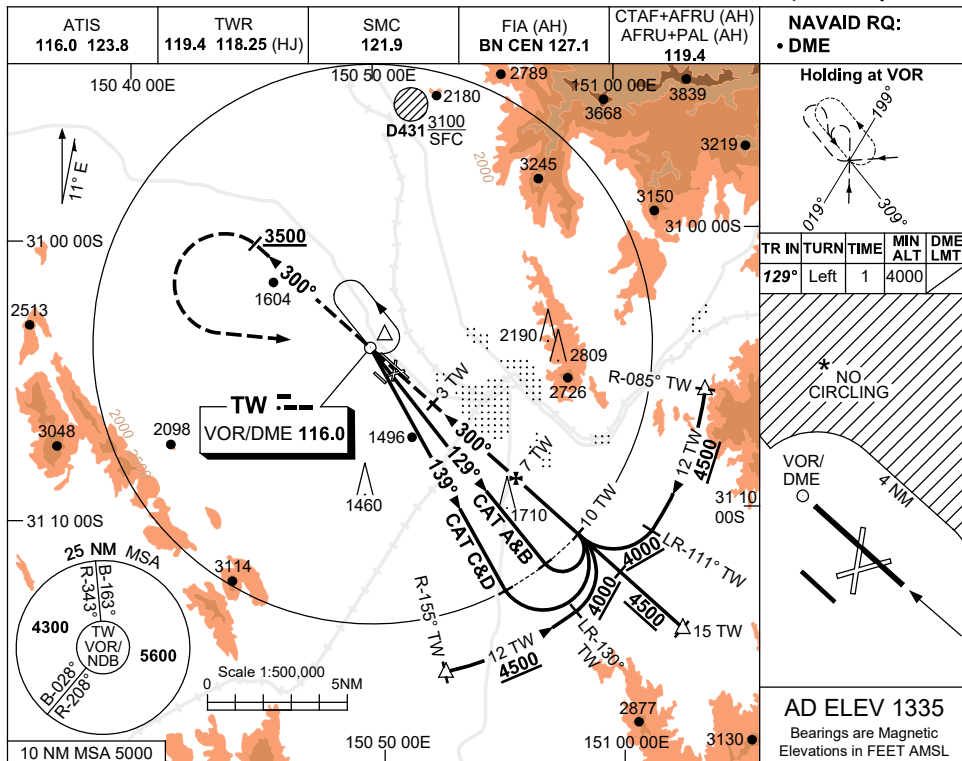
STWV001-180

USE QNH

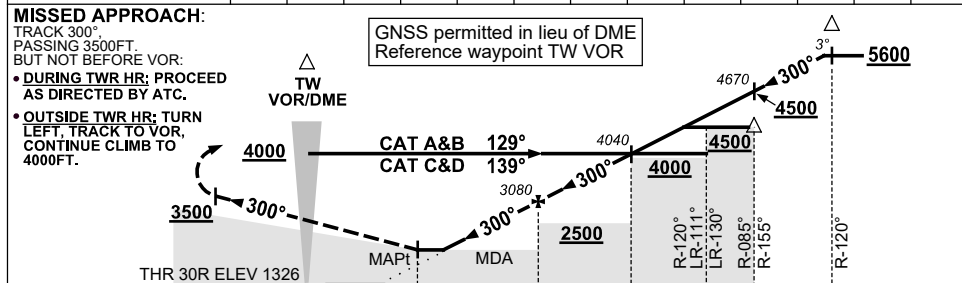
VOR RWY 30R

16 JUN 2022

TAMWORTH, NSW (YSTW)



DIST BY TW DME	3.6	4	5	6	7	8	9	10	11.5	12	13	14	14.9
ALT (3° APCH PATH)	1990	2130	2440	2760	3080	3400	3720	4040	4500	4670	4990	5310	5600



CATEGORY	A	B	C	D
S-I VOR/DME	1990 (664-3.8)			
CIRCLING *	2110 (775-2.4)	2400 (1065-4.0)	2400#(1065-5.0)	
ALTERNATE	(1275-4.4)	(1565-6.0)	(1565-7.0)	

NOTES

1. MAX IAS: INITIAL : 210KT. HOLDING: 210KT.
- * 2. CAT A,B&C NO CIRCLING NE OF RWY 12L/30R BEYOND 4NM. MAX IAS 170KT.
- # 3. CAT D NO CIRCLING NE OF RWY 12L/30R.
4. COLOUR: SEE SPEC NOTICES.

Changes: UNLIT 1710FT OBST.

STWV002-171