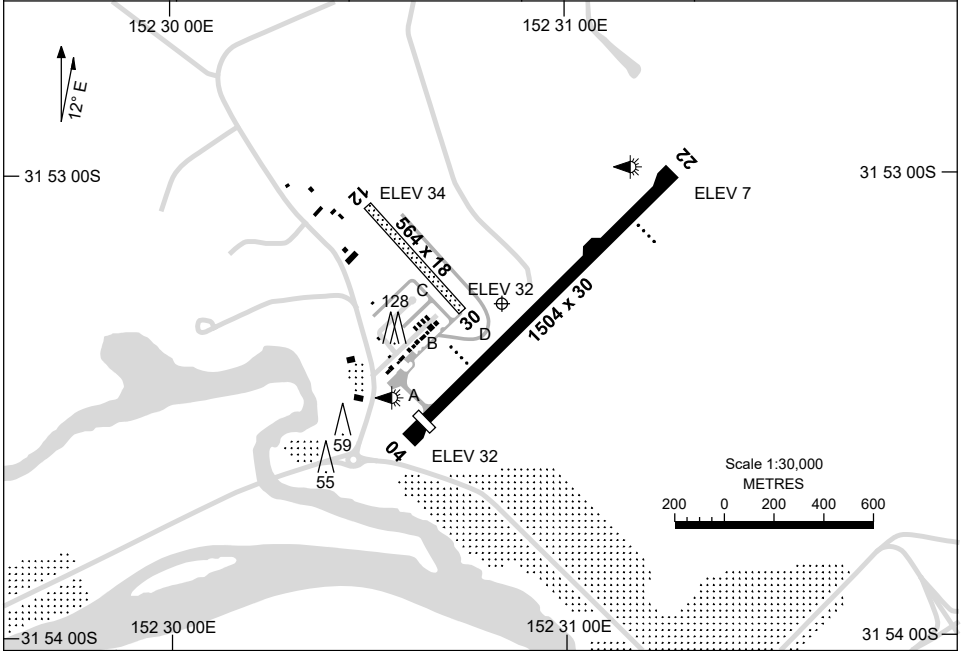


16 JUN 2022

AD ELEV 38  
31 53 19S 152 30 50E

AERODROME CHART  
**TAREE, NSW (YTRE)**

FIA BN CEN 120.55	CTAF 118.1	PAL+AA 122.4	Bearings are Magnetic Elevations in FEET AMSL
----------------------	---------------	-----------------	--



RWY		AERODROME LIGHTING
		TAXIWAY : BLUE EDGE RL : PAL+AA 122.4 , SDBY (15 SEC)
<b>04</b> <sup>033</sup>		PAPI 3.0° 40FT LIRL
<sup>273</sup> <b>22</b>		PAPI 3.0° 40FT LIRL
<b>12</b> <sup>125</sup>		NIL
<sup>305</sup> <b>30</b>		NIL

**NOTES**

1. AWIS (PHONE) 02 9353 6452
2. FIA FREQ 120.55 ON GROUND COMMS UNRELIABLE.

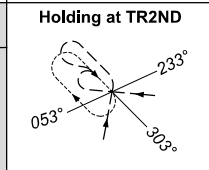
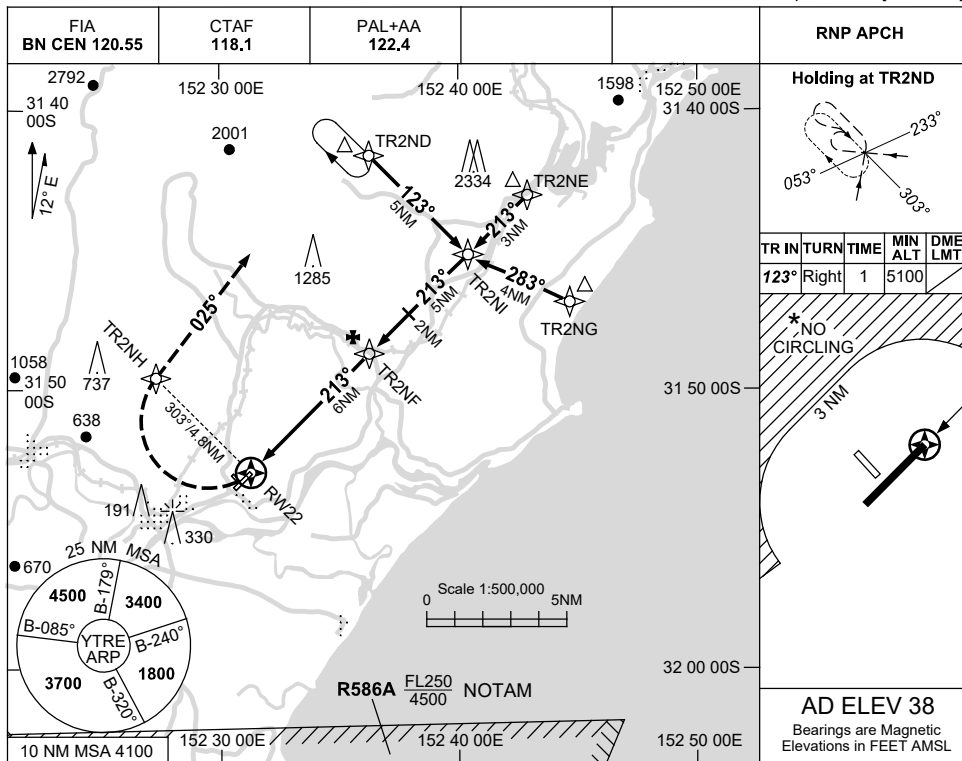
Changes: PAL+AA.

TREAD01-171

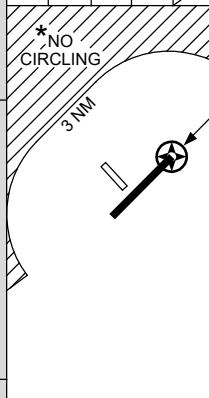
USE QNH

RNP RWY 22  
TAREE, NSW (YTRE)

28 NOV 2024

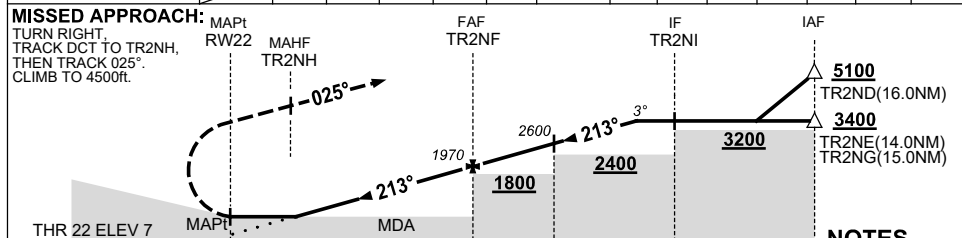


TR IN	TURN	TIME	MIN ALT	DME LMT
123°	Right	1	5100	



**AD ELEV 38**  
Bearings are Magnetic  
Elevations in FEET AMSL

NM TO NEXT WPT	RW22	1.8	2	3	4	5	TR2NF	1	2	3	4	4.5		
ALT (3° APCH PATH)	620	690	1010	1330	1650	1970	2290	2600	2920	3240	3400			



- NOTES**
- MAX IAS:  
HOLDING : 200KT.  
INITIAL : 200KT.  
MISSED APCH  
TURN : 200KT.
  - \*2. NO CIRCLING WEST OF RWY 04 / 22 OUTSIDE 3 NM.
  3. AWIS (PHONE) 02 9353 6452
  4. **CAUTION:**  
HOLDING PATTERN OVERLIES HOLDING FOR YPMQ RNP RWY 03.

CATEGORY	A	B	C	D
LNAV	620 (613-3.5)			NOT APPLICABLE
CIRCLING *	790 (752-2.4)	890 (852-4.0)		
ALTERNATE	(1252-4.4)		(1352-6.0)	

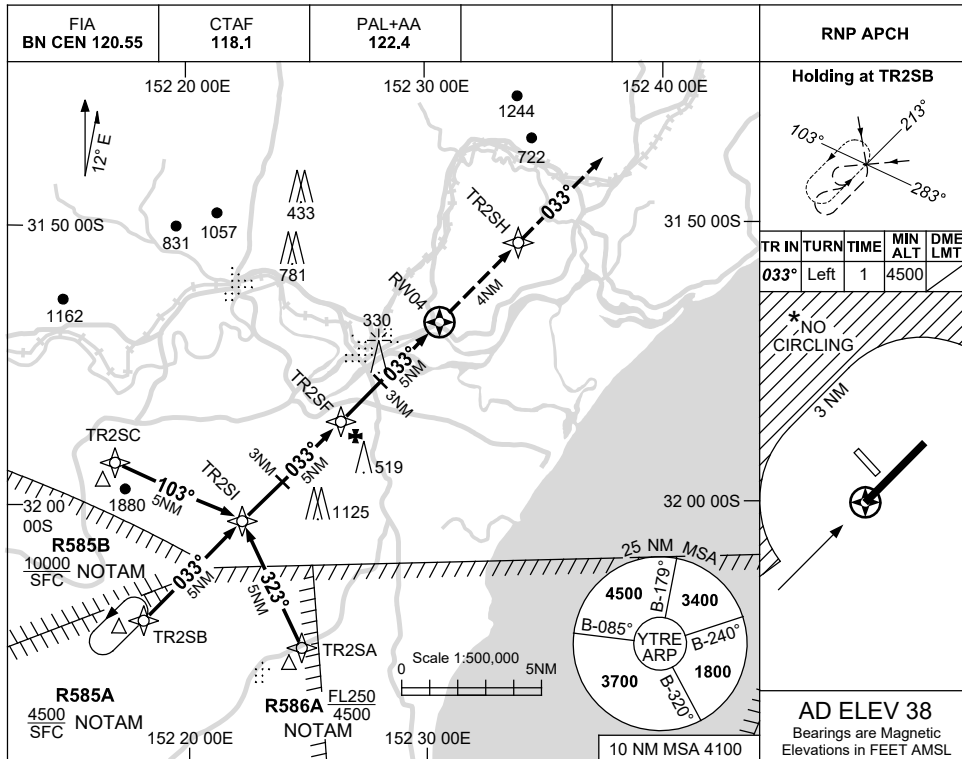
Changes: R586A REPLACES R588A, Editorial.

TRREGN03-181

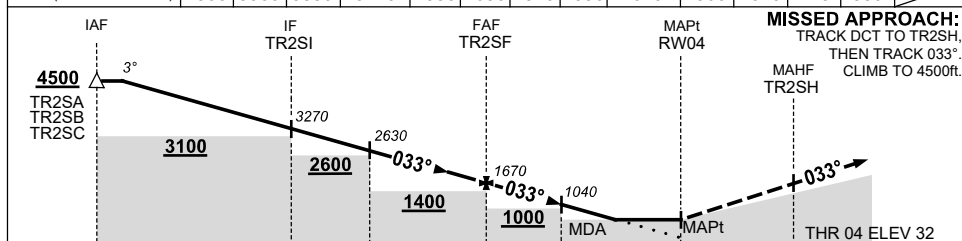
USE QNH

RNP RWY 04  
TAREE, NSW (YTRE)

28 NOV 2024



NM TO NEXT WPT	3.9	2	1	TR2SI	4	3	2	1	TR2SF	4	3	2	1.5	RW04
ALT (3° APCH PATH)	4500	3900	3580	3270	2950	2630	2310	1990	1670	1360	1040	720	550	



CATEGORY	A	B	C	D
LNAV	550 (512-2.9)			NOT APPLICABLE
CIRCLING *	790 (752-2.4)	890 (852-4.0)		
ALTERNATE	(1252-4.4)		(1352-6.0)	

**MISSED APPROACH:**  
TRACK DCT TO TR2SH,  
THEN TRACK 033°.  
CLIMB TO 4500ft.

- NOTES**
- MAX IAS:  
INITIAL : 210KT.
  - \* NO CIRCLING NW OF RWY 04 / 22 BEYOND 3NM.
  - AWIS (PHONE)  
02 9353 6452
  - CLR RQ FM WILLY APP (135.7) PRIOR TO COMMENCING APCH WHEN R585A-B AND/OR R586A ACTIVE.

Changes: R585A-B REPLACES R584A-B, R586A REPLACES R588A.

TREGN04-181