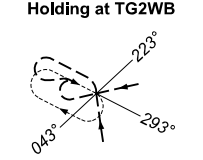
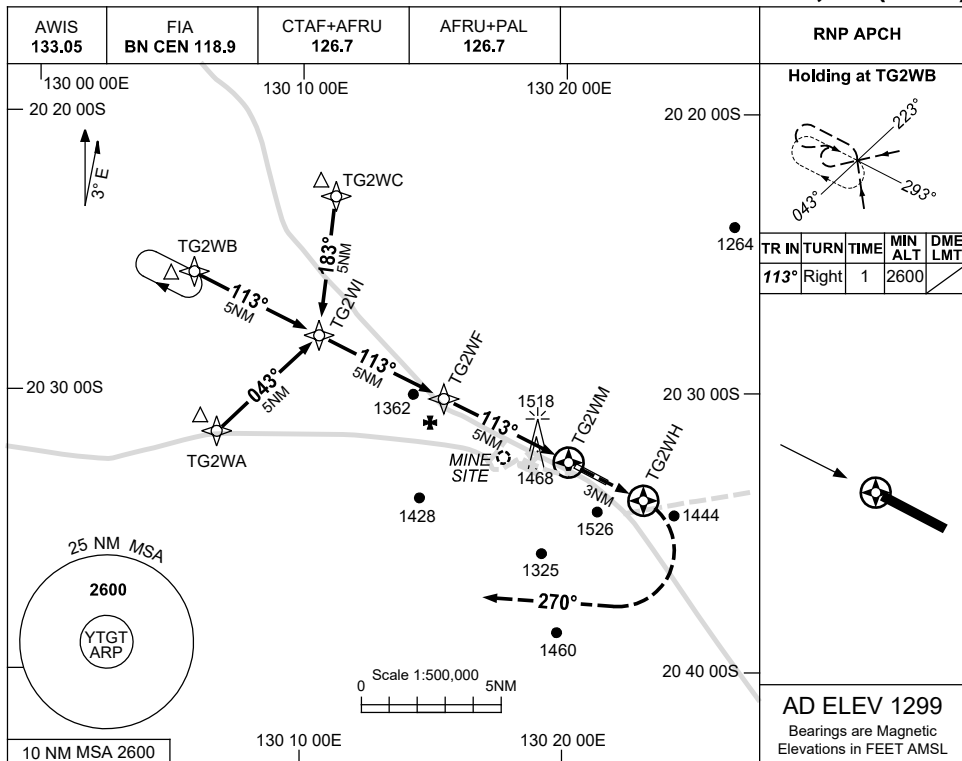




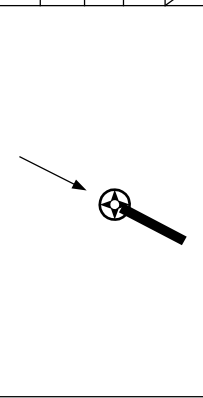
USE QNH

RNP RWY 11  
THE GRANITES, NT (YTGT)

13 JUN 2024

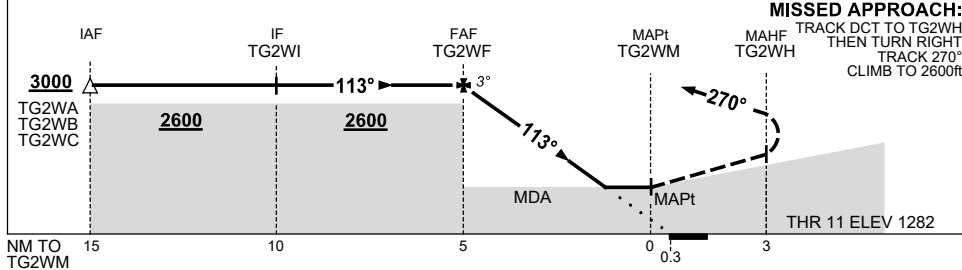


TR IN	TURN	TIME	MIN ALT	DME LMT
113°	Right	1	2600	



**AD ELEV 1299**  
Bearings are Magnetic  
Elevations in FEET AMSL

NM TO NEXT WPT	TG2WF	4	3	2	1.4	TG2WM					
ALT (3° APCH PATH)	3000	2690	2370	2060	1870						



**MISSED APPROACH:**  
TRACK DCT TO TG2WH,  
THEN TURN RIGHT,  
TRACK 270°,  
CLIMB TO 2600ft.

**NOTES**

CATEGORY	A	B	C	D
LNAV	1870 (588-3.3)			
CIRCLING	2020 (721-2.4)	2080 (781-4.0)	2090 (791-5.0)	
ALTERNATE	(1221-4.4)	(1281-6.0)	(1291-7.0)	

1. MAX IAS:  
INITIAL : 210KT.  
**CAUTION:**  
1518FT TOWER ON  
EXTENDED  
CENTRLINE 1.4NM  
THR 11.

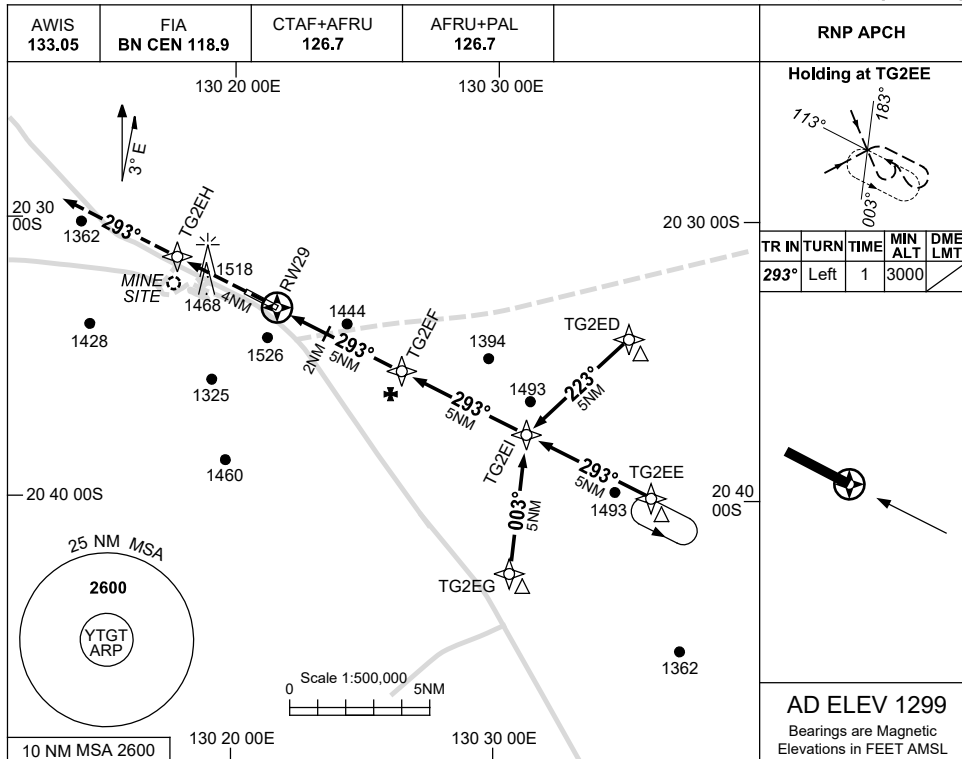
Changes: THR ELEV, AD ELEV, MDH, CIRCLING MDH, VIS, WPT RENAMING, AWIS ADDED, Editorial. TGTGN01-179

USE QNH

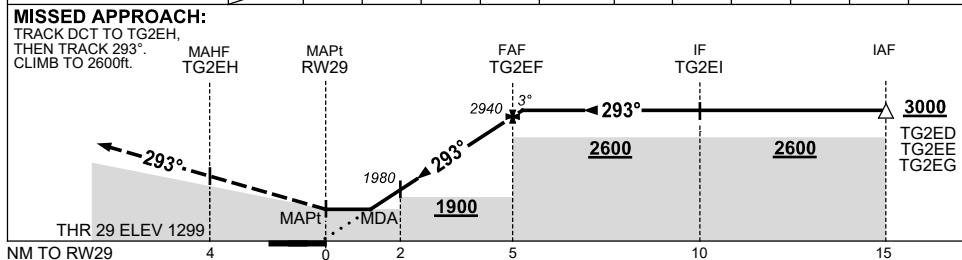
RNP RWY 29

THE GRANITES, NT (YTGT)

13 JUN 2024



NM TO NEXT WPT	RW29	1.5	2	3	4	TG2EF	0.2						
ALT (3° APCH PATH)		1830	1980	2300	2620	2940	3000						



**NOTES**

1. MAX IAS: INITIAL : 210KT.

**CAUTION:**  
1518FT TOWER ON EXTENDED CENTRLINE 2.7NM THR 29.

CATEGORY	A	B	C	D
LNAV	1830 (531-3.0)			
CIRCLING	2020 (721-2.4)	2080 (781-4.0)	2090 (791-5.0)	
ALTERNATE	(1221-4.4)	(1281-6.0)	(1291-7.0)	

Changes: THR ELEV, AD ELEV, MDH, CIRCLING MDH, WPT RENAMING, AWIS ADDED, Editorial.

TGTGN02-179