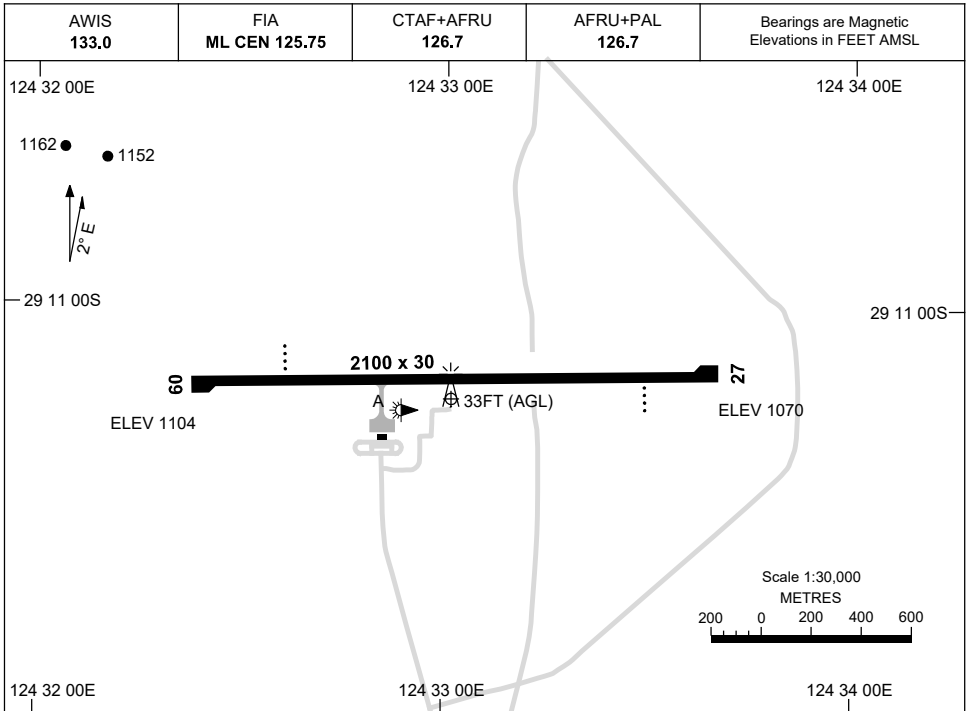


15 JUN 2023

AD ELEV 1104  
29 11 12S 124 33 01E

AERODROME CHART  
**TROPICANA, WA (YTRA)**



	<b>AERODROME LIGHTING</b>
<b>RWY</b>	TAXIWAY : BLUE EDGE RL : AFRU+PAL 126.7 , SDBY (15 SEC) , PTBL (EMERG ONLY, 90 MIN PN)
<b>09</b> <sup>087</sup>	PAPI 3.0° 41.3FT LIRL PTBL
267 <b>27</b>	PAPI 3.0° 41.3FT LIRL PTBL

**NOTES**

1. AWIS RQ THREE ONE-SECOND PULSE TO ACTIVATE.

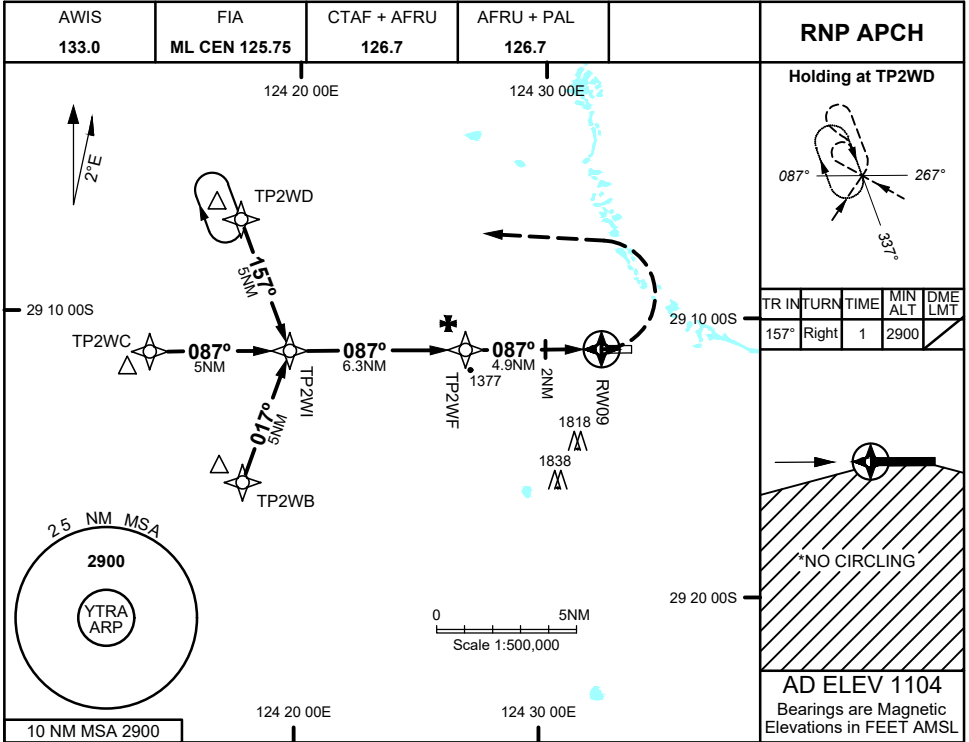
Changes: SDBY SWITCH TIME.

TRAAD01-175

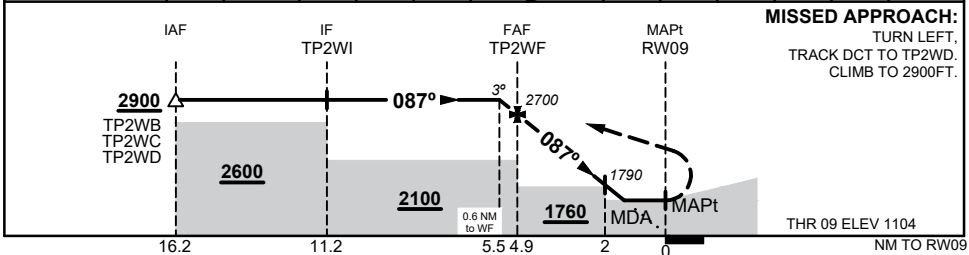
USE QNH

RNP RWY 09  
TROPICANA, WA (YTRA)

28 NOV 2024



NM TO NEXT WPT	0.6	TP2WF	4	3	2	1.7	RW09						
ALT (3° APCH PATH)	2900	2700	2430	2110	1790	1680							



**NOTES**

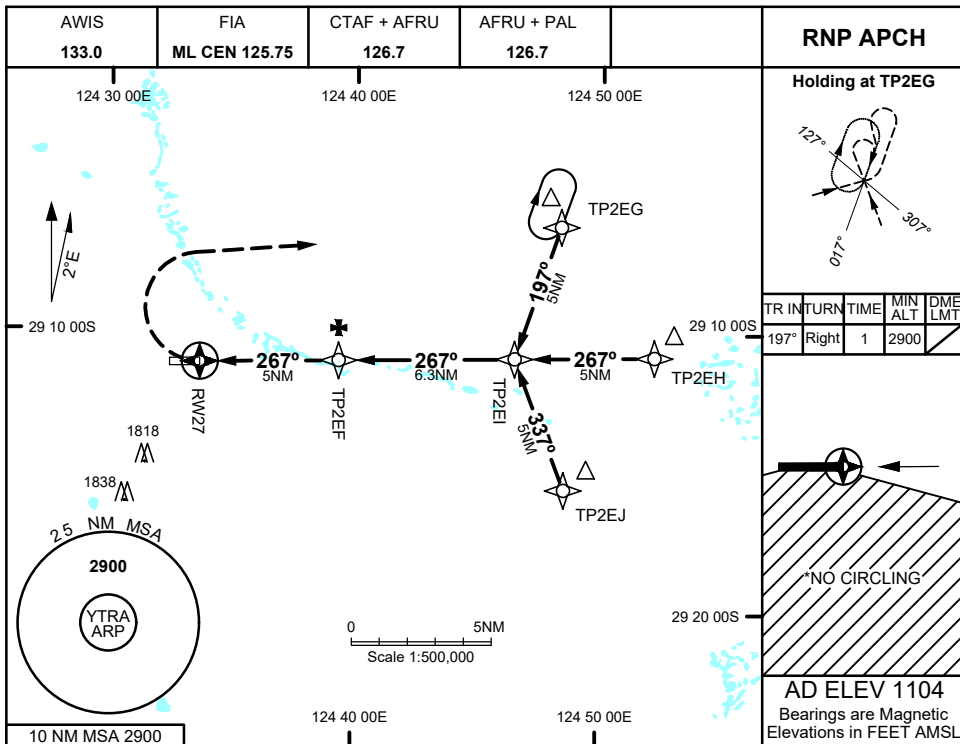
1. MAX IAS:  
HOLDING : 210KTS  
INITIAL : 210KTS  
MAP TURN : 195KTS
- \*2. NO CIRCLING SOUTH OF RWY 09/27

CATEGORY	A	B	C	D
LNAV	<b>1680</b> (576 - 3.3)			
CIRCLING*	<b>1770</b> (666 - 2.4)		<b>2010</b> (906 - 4.0) <b>2030</b> (926 - 5.0)	
ALTERNATE	(1166 - 4.4)		(1406 - 6.0) (1426 - 7.0)	

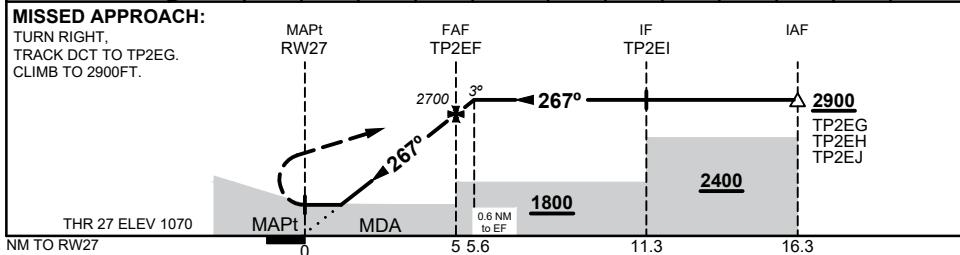
Changes: OBST, Editorial

TRAGN01-181

28 NOV 2024



NM TO NEXT WPT	RW27	1.5	2	3	4	TP2EF	0.6						
ALT (3° APCH PATH)		1590	1760	2080	2390	2700	2900						



**NOTES**

1. MAX IAS:  
HOLDING : 210KTS  
INITIAL : 210KTS  
MAP TURN : 195KTS
- \*2. NO CIRCLING SOUTH OF RWY 09/27

CATEGORY	A	B	C	D
LNAV	<b>1590</b> (520 - 2.9)			
CIRCLING*	<b>1770</b> (666 - 2.4)		<b>2010</b> (906 - 4.0) <b>2030</b> (926 - 5.0)	
ALTERNATE	(1166 - 4.4)		(1406 - 6.0) (1426 - 7.0)	

Changes: OBST, Editorial

TRAGN02-181