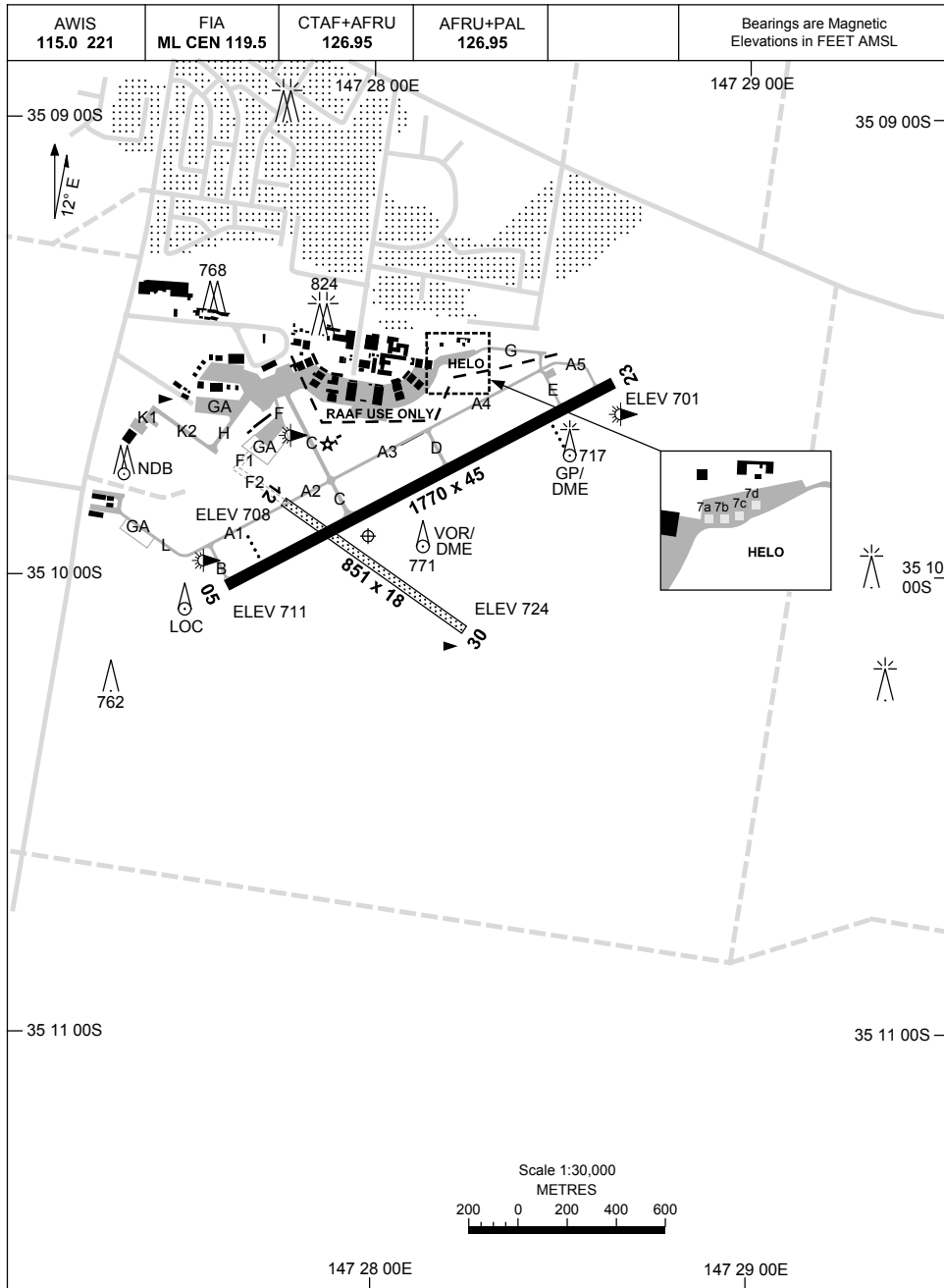


28 NOV 2024

AD ELEV 724
35 09 55S 147 27 59E

AERODROME CHART - Page 1
WAGGA WAGGA, NSW (YSWG)



SWGAD01-181

2 DEC 2021

AD ELEV 724
35 09 55S 147 27 59E

AERODROME CHART - Page 2
WAGGA WAGGA, NSW (YSWG)

AWIS 115.0 221	FIA ML CEN 119.5	CTAF+AFRU 126.95	AFRU+PAL 126.95		Bearings are Magnetic Elevations in FEET AMSL
RWY	AERODROME LIGHTING				
	ABN : ALT W/G 8 SEC TAXIWAYS : BLUE EDGE TWY C RL : AFRU+PAL 126.95 , SDBY (15 SEC) , PTBL PN (ARO: 02 6938 3161)				
05 ⁰⁵⁰	PAPI 3.0° 51FT LIRL (HN ONLY)				
²³⁰ 23	PAPI 3.0° 51FT LIRL (HN ONLY)				
12 ¹¹⁴	NIL				
²⁹³ 30	NIL				

NOTES

Changes: NEW CHART, ABN FLASH TIME.

SWGAD02-169

24 MAR 2022



PARKING POSITION INFORMATION

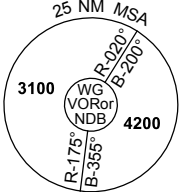
STAND	CO-ORDINATES	ELEV (ft)	CAPACITY	HYDRANT FUEL	DOCKING SYSTEM
1	35 09 35.23S 147 27 41.22E	743	DH8D	TANKER	PILOT/MARSHALLER
2	35 09 34.96S 147 27 42.63E	745	DH8D	TANKER	PILOT/MARSHALLER
3	35 09 34.45S 147 27 44.01E	744	DH8D	TANKER	PILOT/MARSHALLER
4	35 09 33.08S 147 27 45.32E	743	DH8D	TANKER	PILOT/MARSHALLER
5	35 09 33.77S 147 27 48.01E	745	DH8D	TANKER	PILOT
6	35 09 35.42S 147 27 47.75E	746	DH8D	TANKER	PILOT

Changes: ALL BAY ACFT CAPACITY, HYDRANT FUEL.

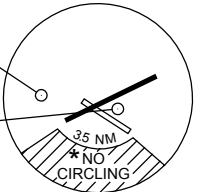
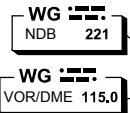
DME or GNSS ARRIVAL PROCEDURES WAGGA WAGGA, NSW (YSWG)

28 NOV 2024

AWIS 115.0 221	FIA ML CEN 119.5	CTAF+AFRU 126.95	AFRU+PAL 126.95		Bearings are Magnetic Elevations in FEET AMSL
-------------------	---------------------	---------------------	--------------------	--	--



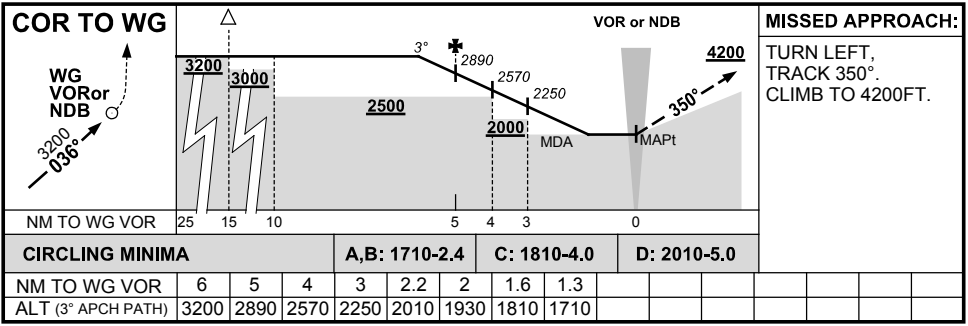
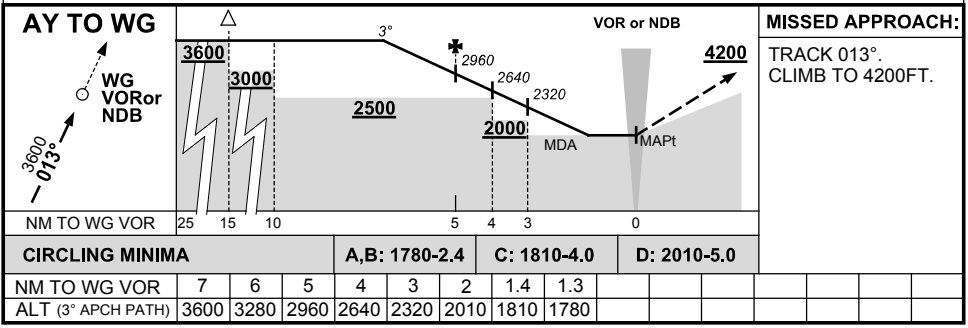
DME USING WG DME REFERENCE WAYPOINT WG VOR



* NO CIRCLING IN SECTOR SOUTH OF RWY 05/23 AND RWY 12/30 BEYOND 3.5NM.

10 NM MSA 3000

AD ELEV 724



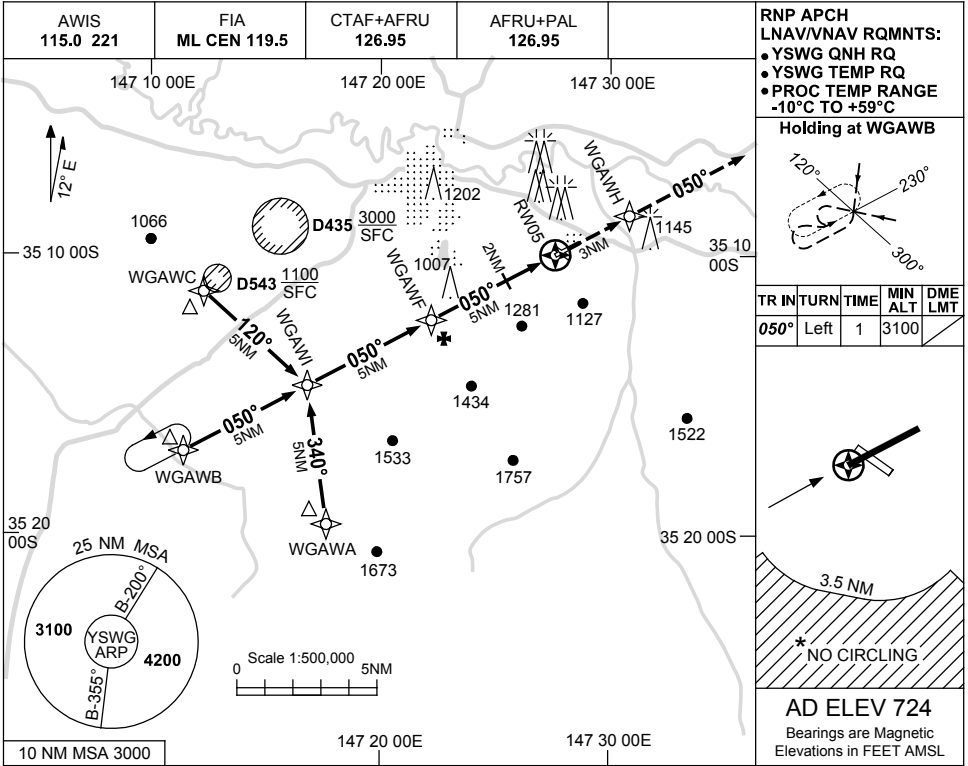
Changes: CAUTION NOTES AND R408 DELETED.

USE QNH

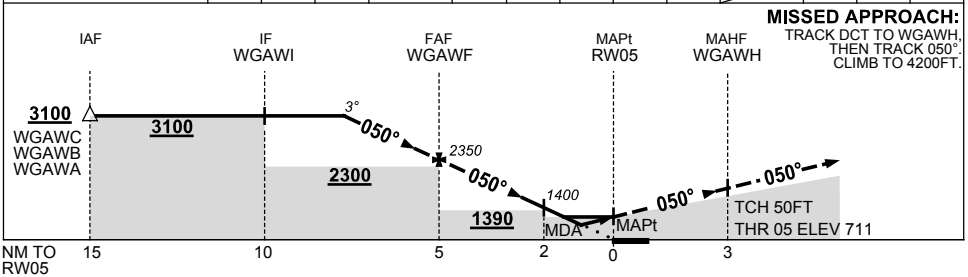
RNP RWY 05

28 NOV 2024

WAGGA WAGGA, NSW (YSWG)



NM TO NEXT WPT	2.3	2	1	WGAWF	4	3	2	1.8	0.9	RW05			
ALT (3° APCH PATH)	3100	2990	2670	2350	2030	1720	1400	1340	1050				



CATEGORY	A	B	C	D	
LNAV/VNAV		1050	(339-1.9)		
LNAV		1340	(629-3.6)		
CIRCLING *	1710	(986-2.4)	1810	(1086-4.0) 2010	(1286-5.0)
ALTERNATE	(1486-4.4)		(1586-6.0)	(1786-7.0)	

- NOTES**
1. MAX IAS: INITIAL : 210KT.
 - *2. NO CIRCLING IN SECTOR SOUTH OF RWY 05/23 AND RWY 12/30 BEYOND 3.5NM.

Changes: R408 AND R415 DELETED.

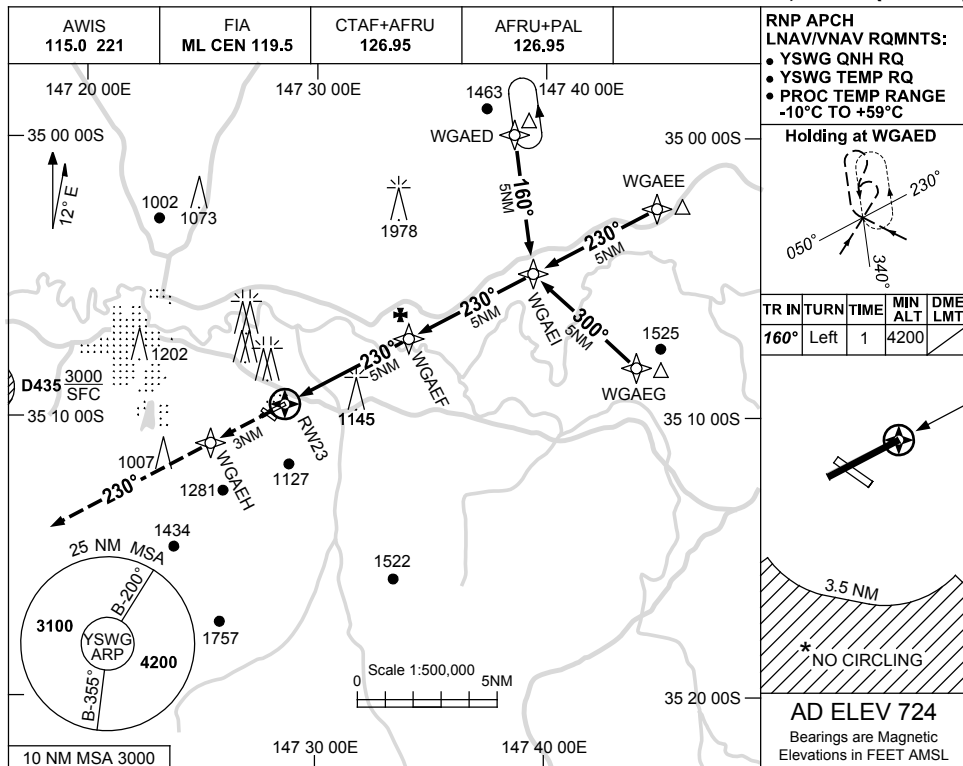
SWGGN01-181

USE QNH

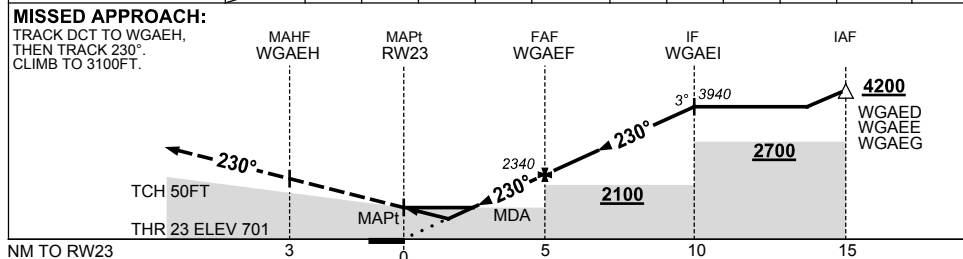
RNP RWY 23

28 NOV 2024

WAGGA WAGGA, NSW (YSWG)



NM TO NEXT WPT	RW23	1.6	2.3	3	4	WGAEF	1	2	3	4	WGAEI	
ALT (3° APCH PATH)		1250	1470	1710	2020	2340	2660	2980	3300	3620	3940	



NOTES

CATEGORY	A	B	C	D
LNAV/VNAV		1250 (549-3.1)		
LNAV		1470 (769-4.4)		
CIRCLING *	1710 (986-2.4)	1810 (1086-4.0)	2010 (1286-5.0)	
ALTERNATE	(1486-4.4)	(1586-6.0)	(1786-7.0)	

- MAX IAS: INITIAL : 210KT.
- * 2. NO CIRCLING IN SECTOR SOUTH OF RWY 05/23 AND RWY 12/30 BEYOND 3.5NM.

Changes: R408 AND R415 DELETED.

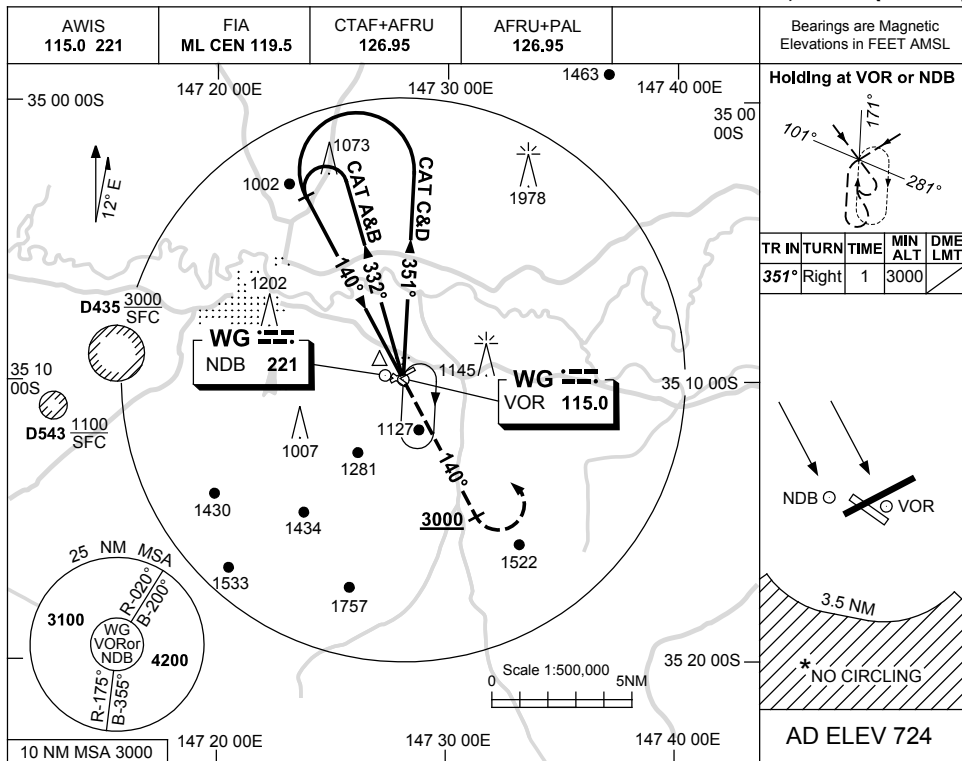
SWGGN02-181

USE QNH

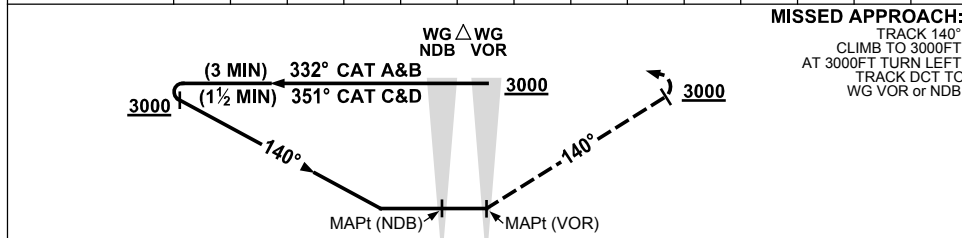
NDB-A or VOR-A

28 NOV 2024

WAGGA WAGGA, NSW (YSWG)



DME DIST	NOT APPLICABLE			
ALT				



NOTES

1. MAX IAS :
HOLDING: 230KT.
INITIAL :
CAT A&B 140KT.
CAT C&D 210KT.
- * 2. NO CIRCLING IN
SECTOR SOUTH
OF RWY 05/23
AND RWY 12/30
BEYOND 3.5NM.

CATEGORY	A	B	C	D
CIRCLING *	1710 (986-2.4)	1810 (1086-4.0)	2010 (1286-5.0)	
ALTERNATE	(1486-4.4)	(1586-6.0)	(1786-7.0)	

Changes: R408 AND R415 DELETED.

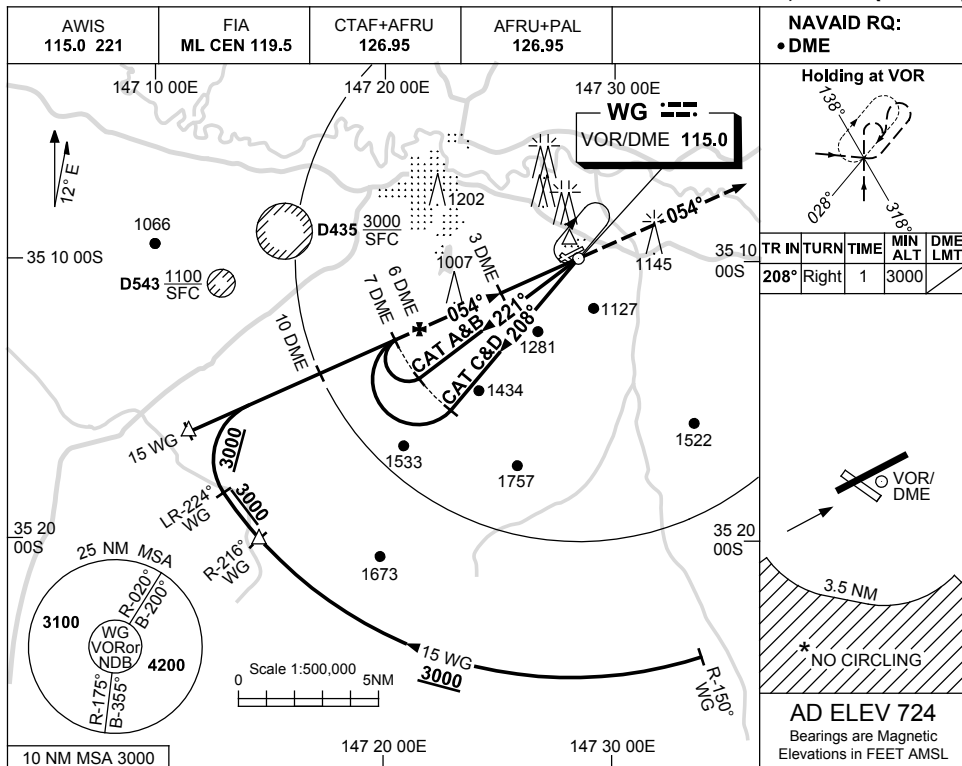
SWGNB01-181

USE QNH

VOR RWY 05

28 NOV 2024

WAGGA WAGGA, NSW (YSWG)



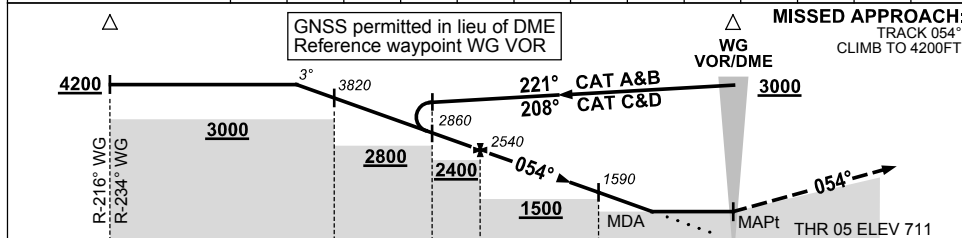
NAVAID RQ:
• DME

Holding at VOR

TR	IN	TURN	TIME	MIN ALT	DME LMT
208°	Right		1	3000	

AD ELEV 724
Bearings are Magnetic Elevations in FEET AMSL

NM TO WG DME	11.2	11	10	9	8	7	6	5	4	3	2.2	
ALT (3° APCH PATH)	4200	4140	3820	3500	3180	2860	2540	2230	1910	1590	1340	



NM TO WG DME

NOTES

CATEGORY	A	B	C	D
S-I VOR/DME	1340 (629-3.6)			
CIRCLING *	1710 (986-2.4)	1810 (1086-4.0)	2010 (1286-5.0)	
ALTERNATE	(1486-4.4)	(1586-6.0)	(1786-7.0)	

- 1. MAX IAS: INITIAL : 210KT.
- * 2. NO CIRCLING IN SECTOR SOUTH OF RWY 05/23 AND RWY 12/30 BEYOND 3.5NM.

Changes: R408 AND R415 DELETED.

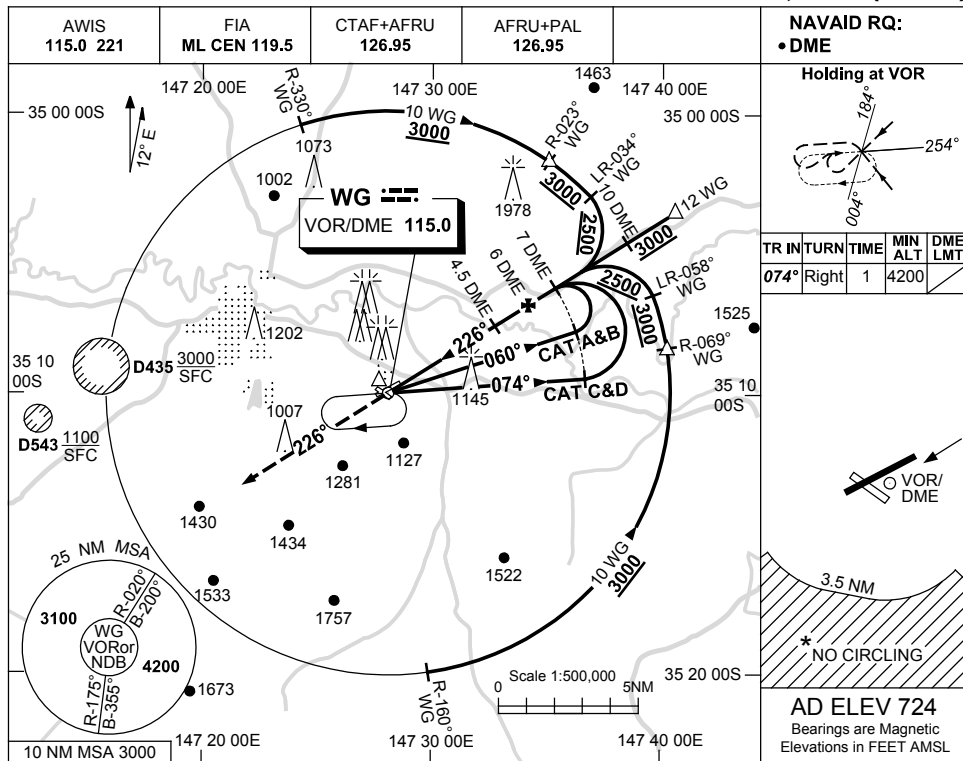
SWGVO01-181

USE QNH

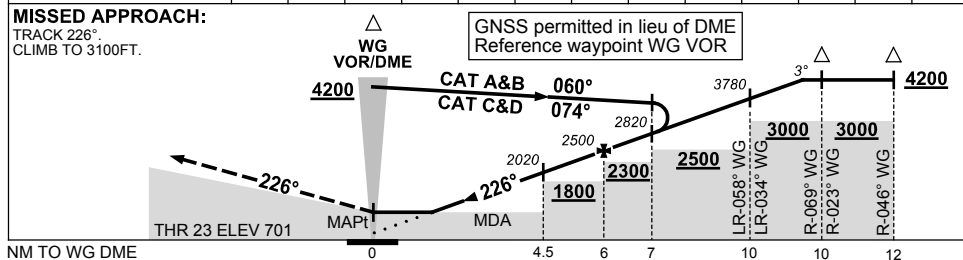
VOR RWY 23

28 NOV 2024

WAGGA WAGGA, NSW (YSWG)



NM TO WG DME	2.8	3	4	4.5	5	6	7	8	9	10	11.3		
ALT (3° APCH PATH)	1500	1550	1870	2020	2180	2500	2820	3140	3460	3780	4200		



NOTES

CATEGORY	A	B	C	D
S-I VOR/DME	1500 (799-4.6)			
CIRCLING *	1710 (986-2.4)		1810 (1086-4.0) 2010 (1286-5.0)	
ALTERNATE	(1486-4.4)		(1586-6.0) (1786-7.0)	

1. MAX IAS: INITIAL : 210KT.
- * 2. NO CIRCLING IN SECTOR SOUTH OF RWY 05/23 AND RWY 12/30 BEYOND 3.5NM.

Changes: R408 AND R415 DELETED.

SWGVO02-181