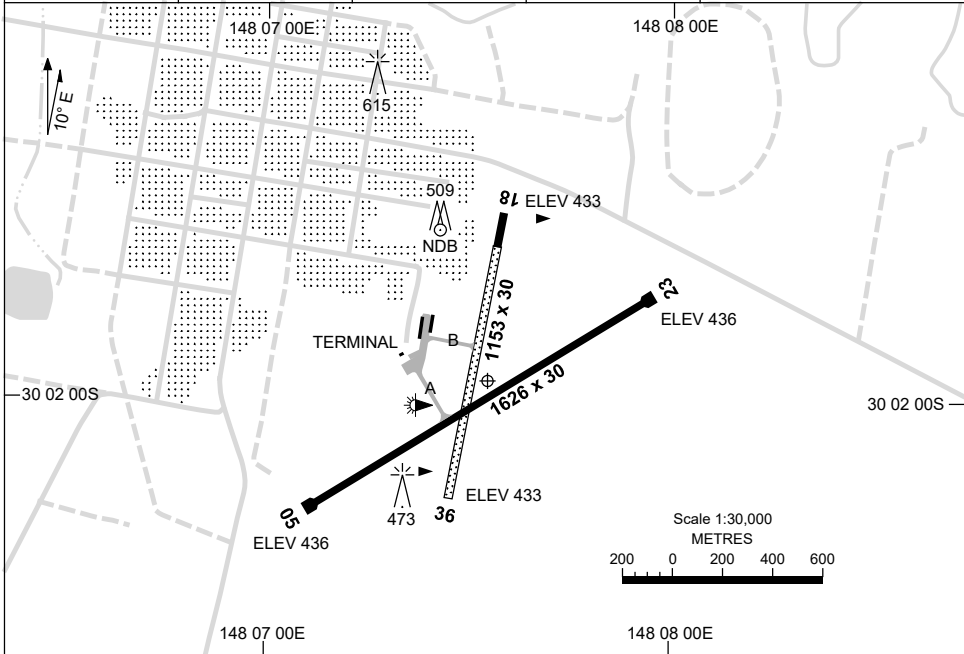


5 SEP 2024

AD ELEV 439
30 01 58S 148 07 33E

AERODROME CHART
WALGETT, NSW (YWLG)

AWIS 133.425	FIA BN CEN 127.1	CTAF 126.7	PAL+AA 122.4	Bearings are Magnetic Elevations in FEET AMSL
-----------------	---------------------	---------------	-----------------	--



AERODROME LIGHTING	
RWY	TAXIWAY : BLUE EDGE RL : PAL+AA 122.4.
05 ⁰⁴⁸	LIRL
²²⁸ 23	LIRL
18 ¹⁸⁰	NIL
³⁶⁰ 36	NIL

NOTES

1. FIA FREQ 127.1 AVBL CIRCUIT AREA.

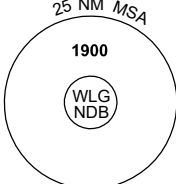
Changes: SDBY LIGHTING REMOVED, TWY, Editorial.

WLGAD01-180

GNSS ARRIVAL PROCEDURES WALGETT, NSW (YWLG)

16 JUN 2022

AWIS 133.425	FIA BN CEN 127.1	CTAF 126.7	PAL+AA 122.4	Bearings are Magnetic Elevations in FEET AMSL
-----------------	---------------------	---------------	-----------------	--




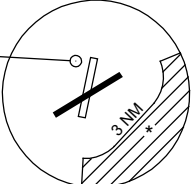
25 NM MSA

1900

WLG NDB

REFERENCE WAYPOINT WLG NDB



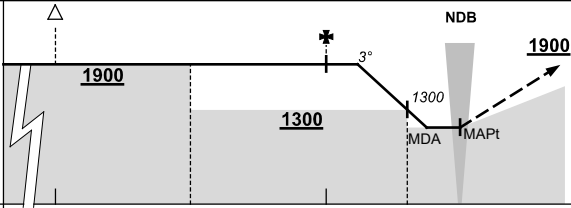


3 NM

* NO CIRCLING IN SECTOR SOUTH-EAST OR RWY 23 & RWY 36 BEYOND 3 NM.

10 NM MSA 1900

AD ELEV 439

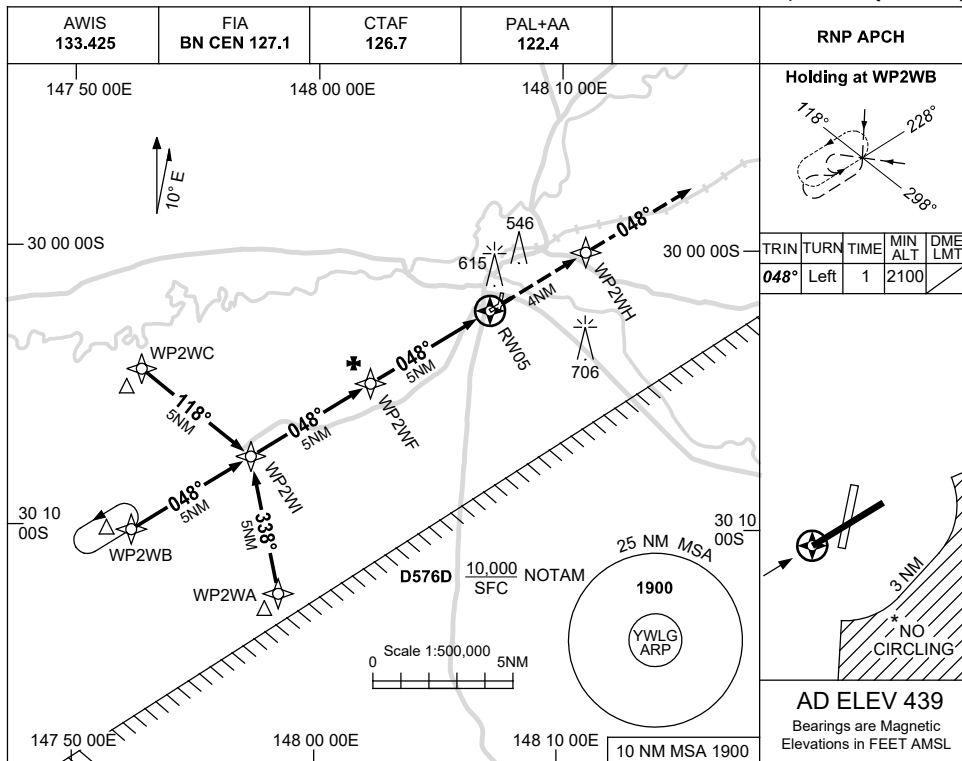
ALL ROUTES TO WLG NDB											<p>MISSED APPROACH:</p> <p>CLIMB ON TRACK TO 1900FT.</p>								
	NM TO WLG NDB	25	15	10	5	2	0												
CIRCLING MINIMA			A,B: 1040-2.4		C: 1130-4.0		D: N/A												
NM TO WLG NDB	3.9	3	2	1.5	1.2														
ALT (3° APCH PATH)	1900	1620	1300	1130	1040														

USE QNH

RNP RWY 05

WALGETT, NSW (YWLG)

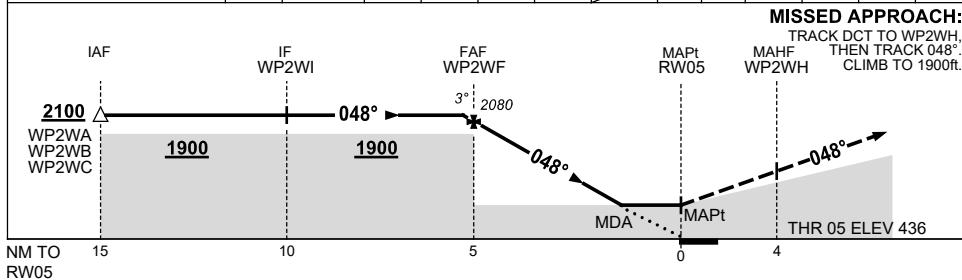
5 SEP 2024



TRIN	TURN	TIME	MIN ALT	DME LMT
048°	Left	1	2100	

AD ELEV 439
 Bearings are Magnetic Elevations in FEET AMSL

NM TO NEXT WPT	0.1	WP2WF	4	3	2	1.4	RW05
ALT (3° APCH PATH)	2100	2080	1760	1440	1120	940	



MISSED APPROACH:
 TRACK DCT TO WP2WH,
 THEN TRACK 048°.
 CLIMB TO 1900ft.

CATEGORY	A	B	C	D
LNAV	940 (501-2.8)			NOT APPLICABLE
CIRCLING*	1040 (601-2.4)	1130 (691-4.0)		
ALTERNATE	(1101-4.4)		(1191-6.0)	

- NOTES**
- MAX IAS: INITIAL : 210KT.
 - NO CIRCLING IN SECTOR SOUTH-EAST OF RWY 23 & RWY 36 BEYOND 3NM.

Changes: STEP DOWN FIX REMOVED, WPT NAMING CONVENTION.

WLGGN01-180

