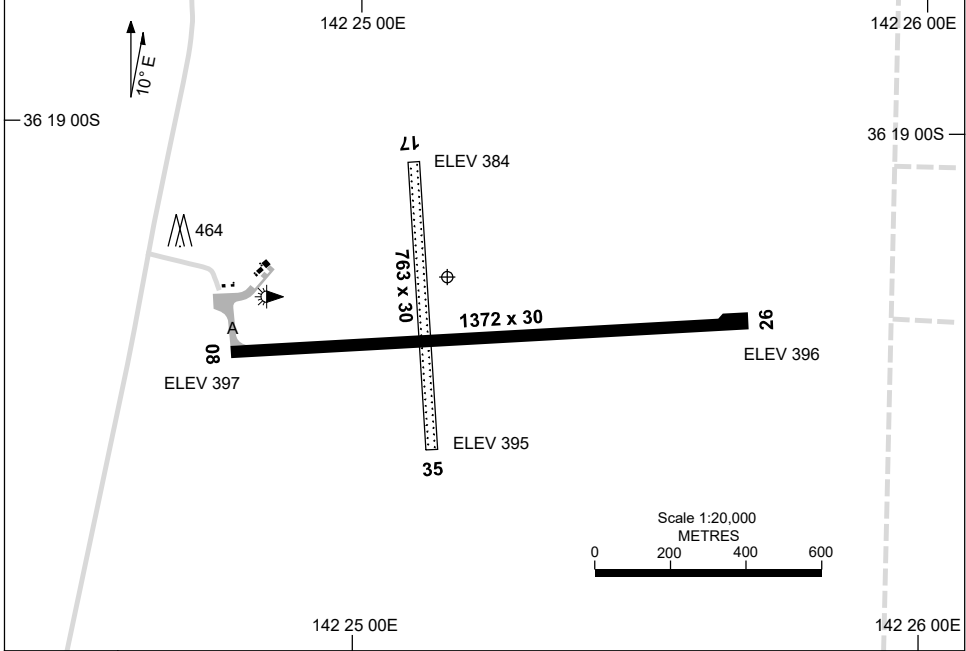


FIA ML CEN 125.8	CTAF+AFRU 126.7	AFRU+PAL 126.7	Bearings are Magnetic Elevations in FEET AMSL
---------------------	--------------------	-------------------	--



	<b>AERODROME LIGHTING</b>
<b>RWY</b>	TAXIWAY : BLUE EDGE RL : AFRU+PAL 126.7
<b>08</b> <small>076</small>	LIRL
<small>256</small> <b>26</b>	LIRL
<b>17</b> <small>166</small>	NIL
<small>346</small> <b>35</b>	NIL

**NOTES**

1. FIA FREQ 125.8 AVBL CIRCUIT AREA.
2. AWIS (PHONE) 03 8470 3223

Changes: TWY.

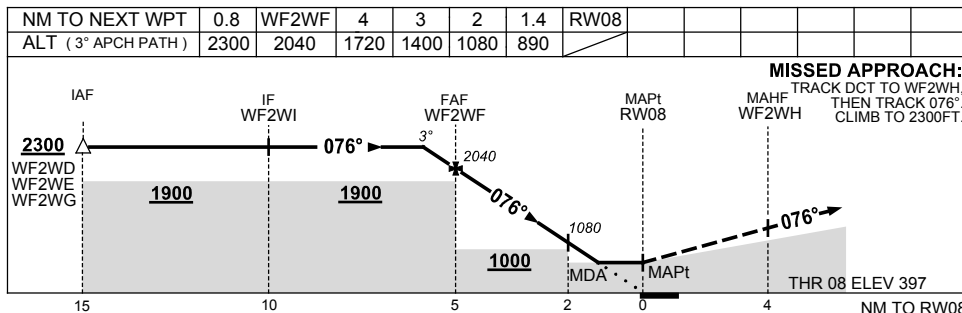
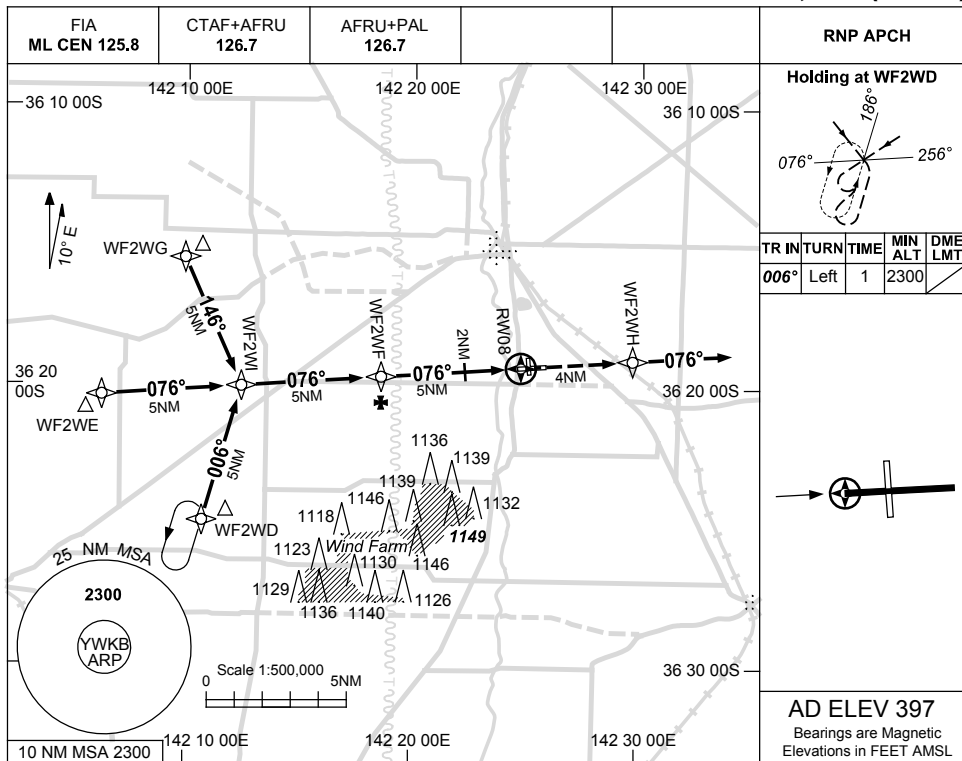
WKBAD01-176

USE QNH

RNP RWY 08

7 SEP 2023

WARRACKNABEAL, VIC (YWKB)



**NOTES**

CATEGORY	A	B	C	D
LNAV	<b>890 (493-2.8)</b>			<b>NOT APPLICABLE</b>
CIRCLING	<b>990 (593-2.4)</b>		<b>1090 (693-4.0)</b>	
ALTERNATE	<b>(1093-4.4)</b>		<b>(1193-6.0)</b>	

1. MAX IAS:  
INITIAL : 210KT.
2. AWIS (PHONE)  
03 8470 3223
3. HOLDING  
OVERLAYS YHSM  
RNP RWY 08 &  
YHSM RNP RWY 26

Changes: REVISED PROC, CHANGE OF OWNERSHIP, Editorial.

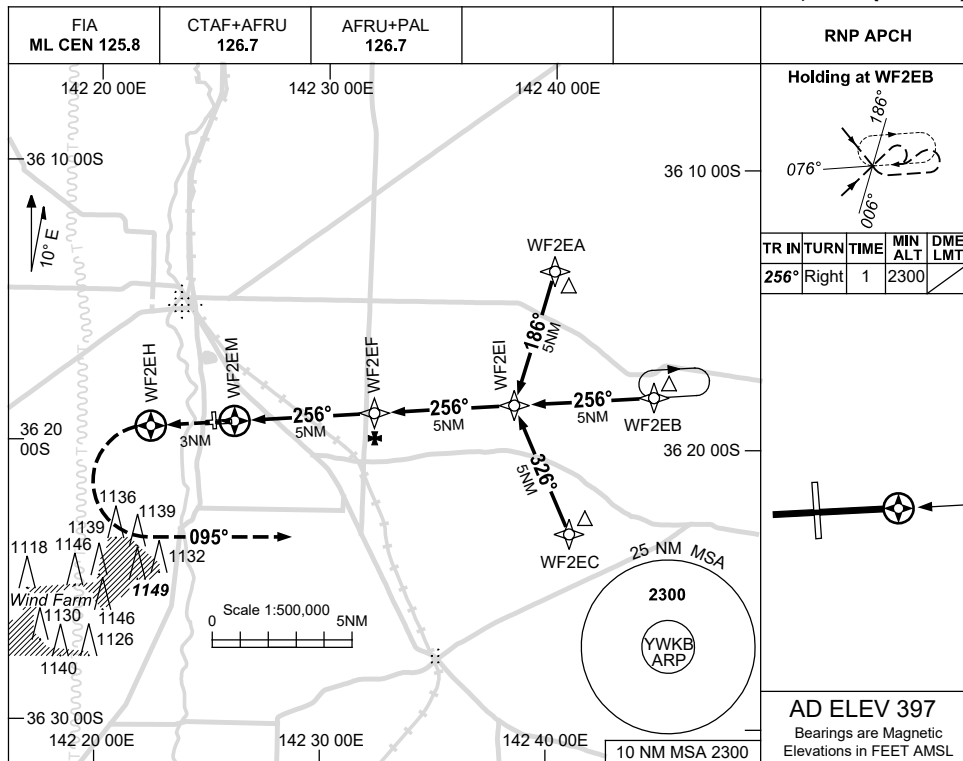
WKGBN01-176

USE QNH

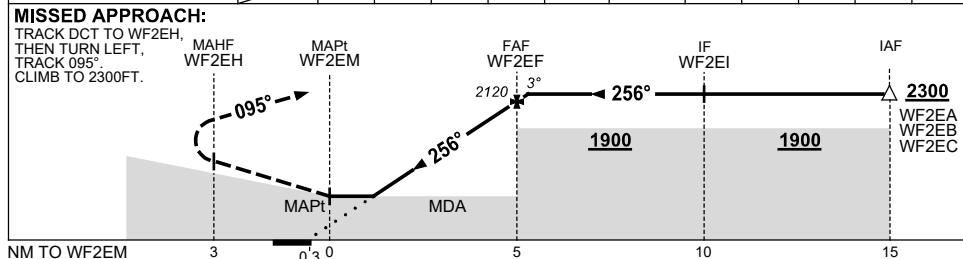
RNP E

7 SEP 2023

**WARRACKNABEAL, VIC (YWKB)**



NM TO NEXT WPT	WF2EM	1.4	1.8	2	3	4	WF2EF	0.6			
ALT (3° APCH PATH)		990	1090	1170	1490	1810	2120	2300			



CATEGORY	A	B	C	D
CIRCLING	990 (593-2.4)		1090 (693-4.0)	
ALTERNATE	(1093-4.4)		(1193-6.0)	
				NOT APPLICABLE

- NOTES**
- MAX IAS: INITIAL : 210KT.
  - AWIS (PHONE) 03 8470 3223

Changes: REVISED PROC, CHANGE OF OWNERSHIP.

WKGBN02-176