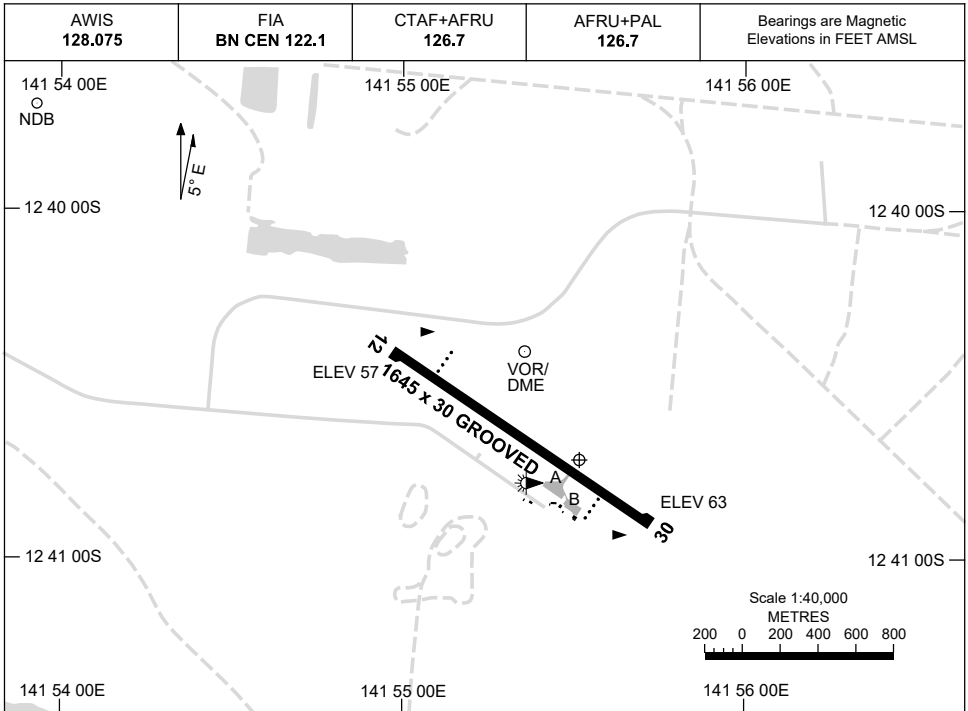


1 DEC 2022

AD ELEV 63
12 40 43S 141 55 31E

AERODROME CHART
WEIPA, QLD (YBWP)



	AERODROME LIGHTING
RWY	TAXIWAY : BLUE EDGE RL : AFRU+PAL 126.7, SDBY (15 SEC)
12 ¹¹⁹	PAPI 3.0° 45FT LIRL PTBL
²⁹⁹ 30	PAPI 3.0° 46FT LIRL PTBL

NOTES

1. FIA FREQ 122.1 AVBL ON GROUND.
2. AWIS REQUIRES 1 SEC PULSE TO ACTIVATE.
3. RWY 12/30 PTBL LIGHTING AVBL DRG EMERG ONLY WITH 2 HR PN.

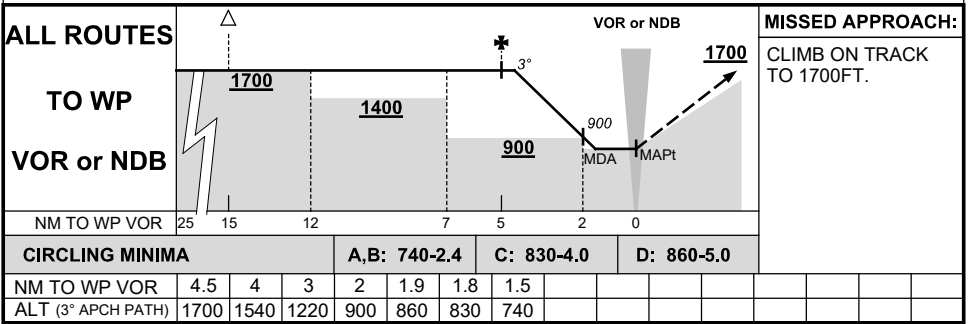
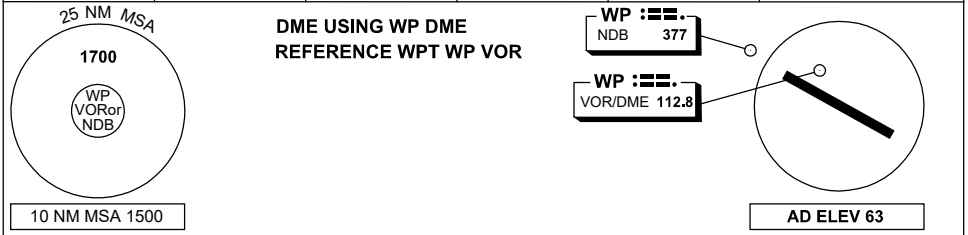
Changes: TWY A AND B ADDED.

BWPAD01-173

DME or GNSS ARRIVAL PROCEDURES WEIPA, QLD (YBWP)

21 MAY 2020

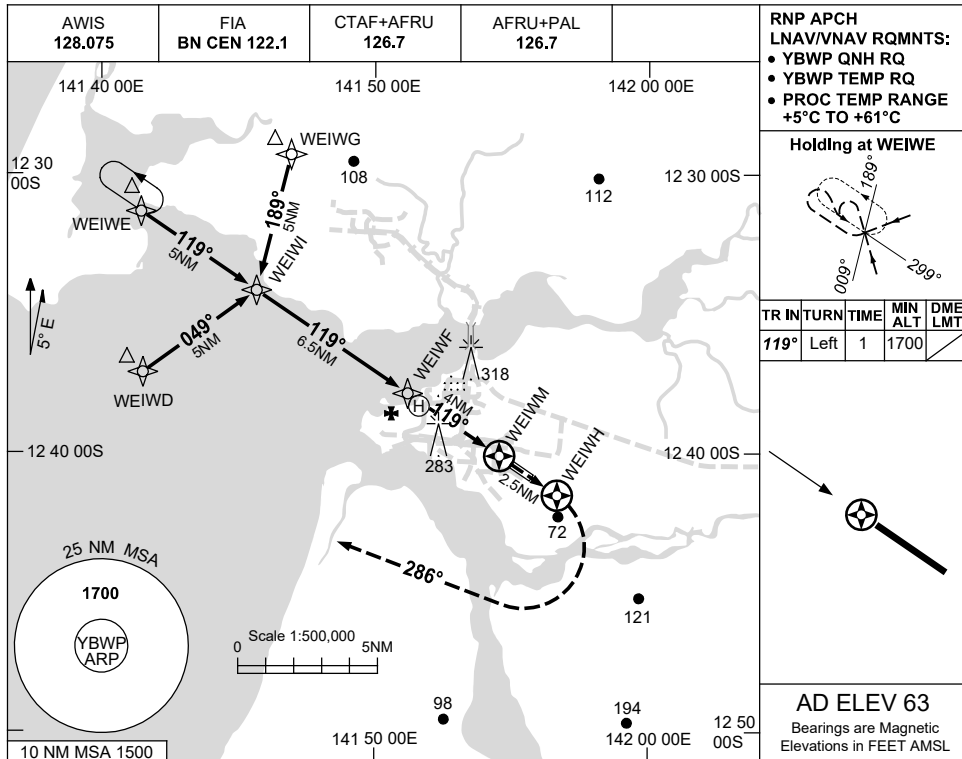
AWIS 128.075	FIA BN CEN 122.1	CTAF+AFRU 126.7	AFRU+PAL 126.7		Bearings are Magnetic Elevations in FEET AMSL
-----------------	---------------------	--------------------	-------------------	--	--



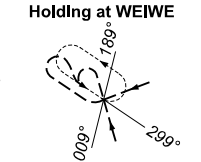
USE QNH

RNP RWY 12
WEIPA, QLD (YBWP)

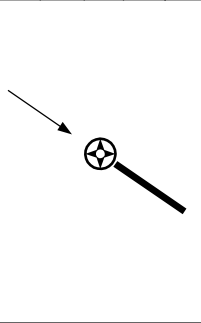
24 MAR 2022



RNP APCH
LNAV/VNAV RQMNTS:
• YBWP QNH RQ
• YBWP TEMP RQ
• PROC TEMP RANGE
+5°C TO +61°C

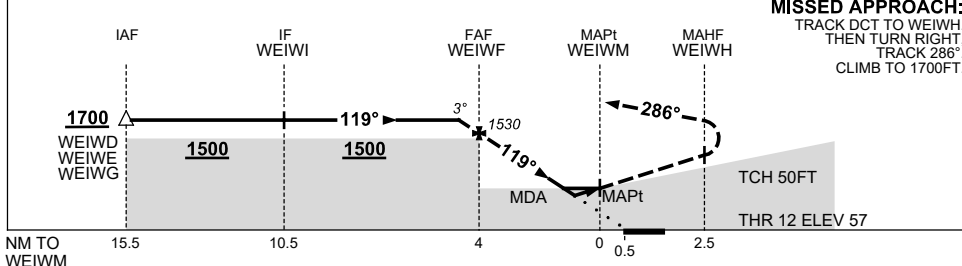


TR IN	TURN	TIME	MIN ALT	DME LMT
119°	Left	1	1700	



AD ELEV 63
Bearings are Magnetic
Elevations in FEET AMSL

NM TO NEXT WPT	0.5	WEIWF	3	2	1.1	0.6	WEIWM						
ALT (3° APCH PATH)	1700	1530	1210	890	590	430							



NOTES

CATEGORY	A	B	C	D
LNAV/VNAV	430 (373-2.1)			
LNAV	590 (533-3.0)			
CIRCLING	740 (677-2.4)	830 (767-4.0)	860 (797-5.0)	
ALTERNATE	(1177-4.4)	(1267-6.0)	(1297-7.0)	

1. MAX IAS:
INITIAL : 210KT.

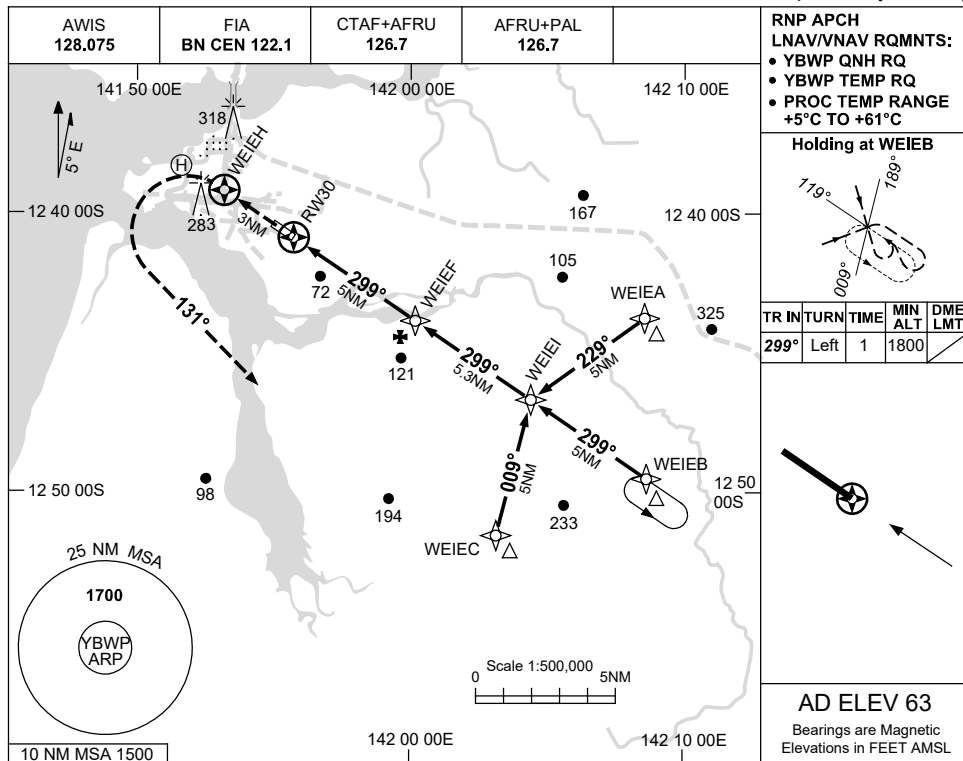
Changes: CHART TITLE, PBN SPECIFICATION BOX.

BWPGN01-170

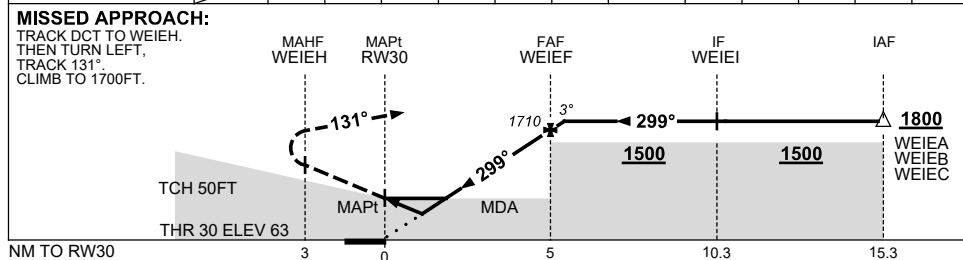
USE QNH

RNP RWY 30
WEIPA, QLD (YBWP)

24 MAR 2022



NM TO NEXT WPT	RW30	1	1.5	1.6	2	3	4	WEIEF	0.3				
ALT (3° APCH PATH)		430	610	620	750	1070	1390	1710	1800				



NOTES

CATEGORY	A	B	C	D
LNAV/VNAV	430 (367-2.1)			
LNAV	620 (557-3.2)			
CIRCLING	740 (677-2.4)		830 (767-4.0)	860 (797-5.0)
ALTERNATE	(1177-4.4)		(1267-6.0)	(1297-7.0)

1. MAX IAS:
INITIAL : 210KT.

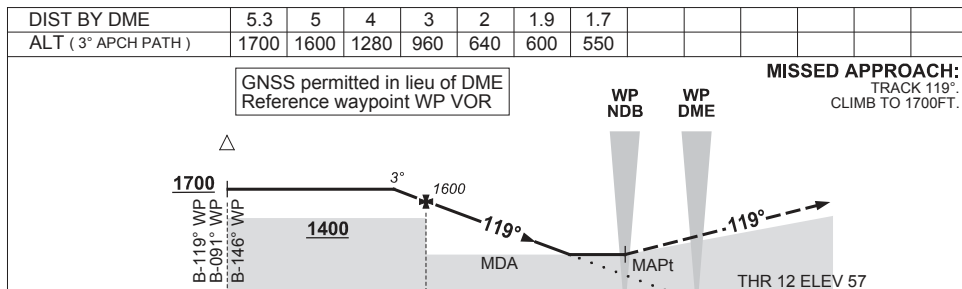
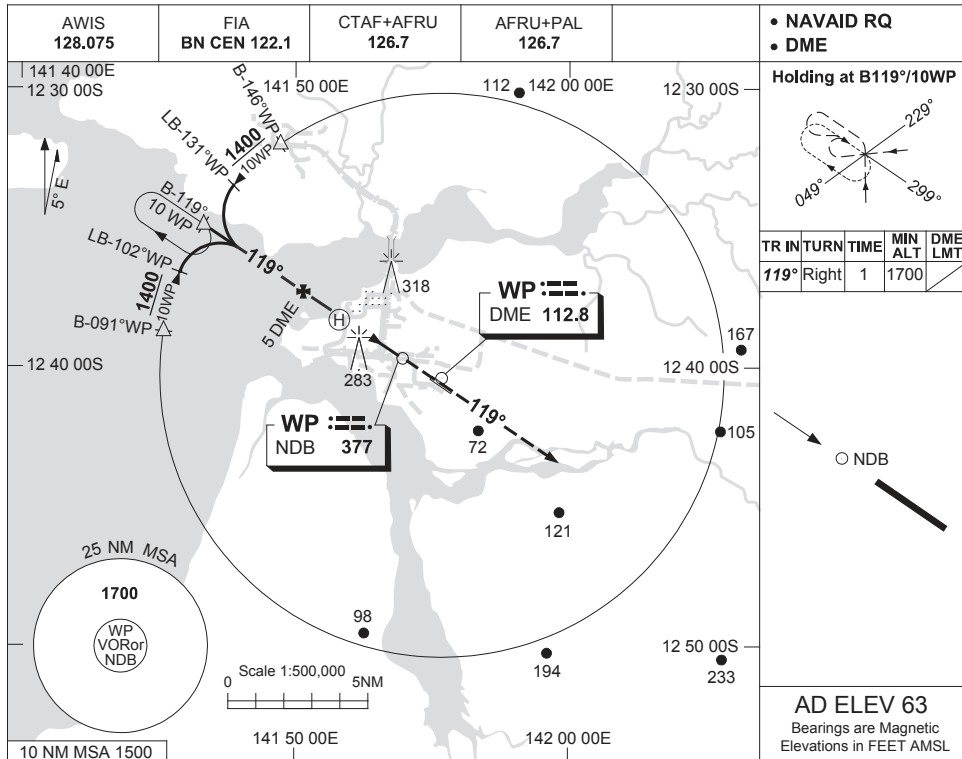
Changes: CHART TITLE, PBN SPECIFICATION BOX.

BWPGN02-170

USE QNH

NDB-Z RWY 12
WEIPA, QLD (YBWP)

25 MAR 2021



NOTES

CATEGORY	A	B	C	D
S-I NDB/DME	550 (487-2.7)			
CIRCLING	740 (677-2.4)		830 (767-4.0)	860 (797-5.0)
ALTERNATE	(1177-4.4)		(1267-6.0)	(1297-7.0)

1. MAX IAS:
INITIAL : 210KT.

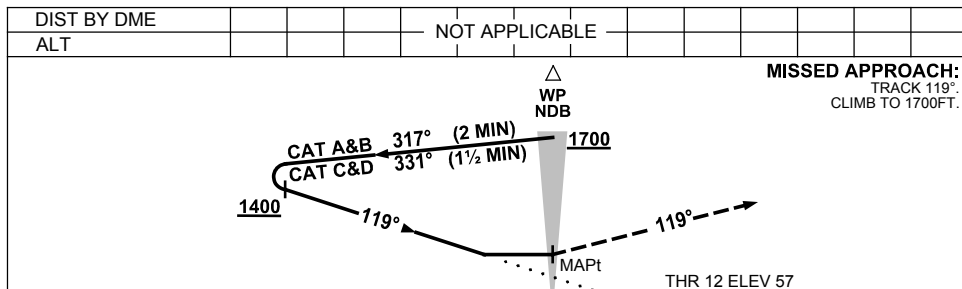
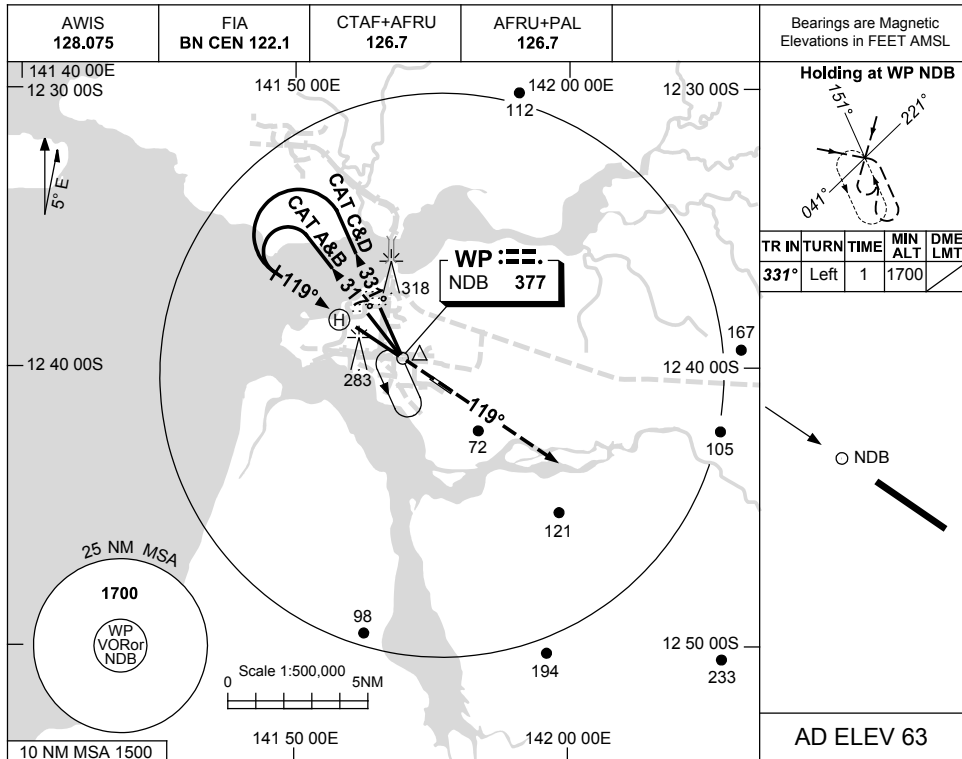
Changes: 283FT SINGLE LIT OBST, 318FT LIT OBST.

BWPNB01-166

USE QNH

NDB-Y RWY 12
WEIPA, QLD (YBWP)

25 MAR 2021



NOTES

CATEGORY	A	B	C	D
S-I NDB	600 (537-3.0)			
CIRCLING	740 (677-2.4)	830 (767-4.0)	860 (797-5.0)	
ALTERNATE	(1177-4.4)		(1297-7.0)	

1. MAX IAS:
INITIAL : 210KT.

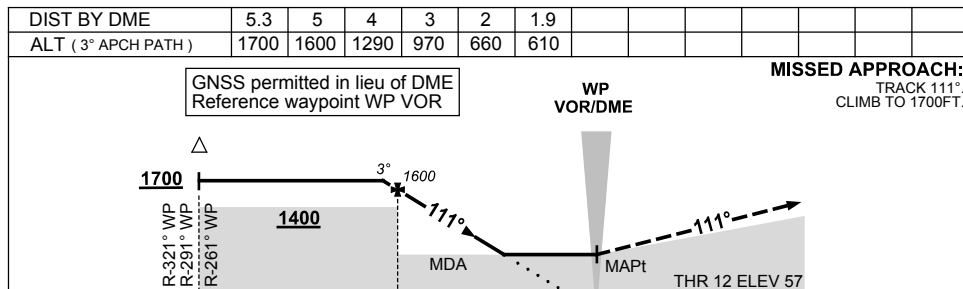
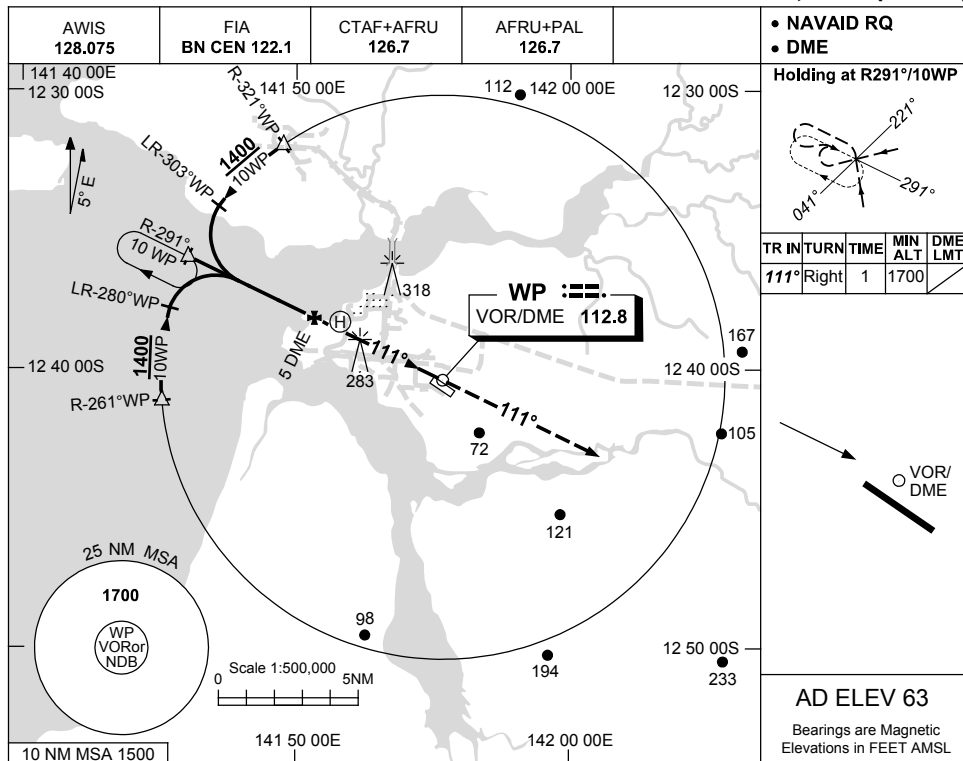
Changes: 283FT SINGLE LIT OBST, 318FT LIT OBST.

BWPNB02-166

USE QNH

VOR-Z RWY 12
WEIPA, QLD (YBWP)

25 MAR 2021



NOTES

CATEGORY	A	B	C	D
S-I VOR/DME	610 (547-3.0)			
CIRCLING	740 (677-2.4)	830 (767-4.0)	860 (797-5.0)	
ALTERNATE	(1177-4.4)	(1267-6.0)	(1297-7.0)	

1. MAX IAS:
INITIAL : 210KT.

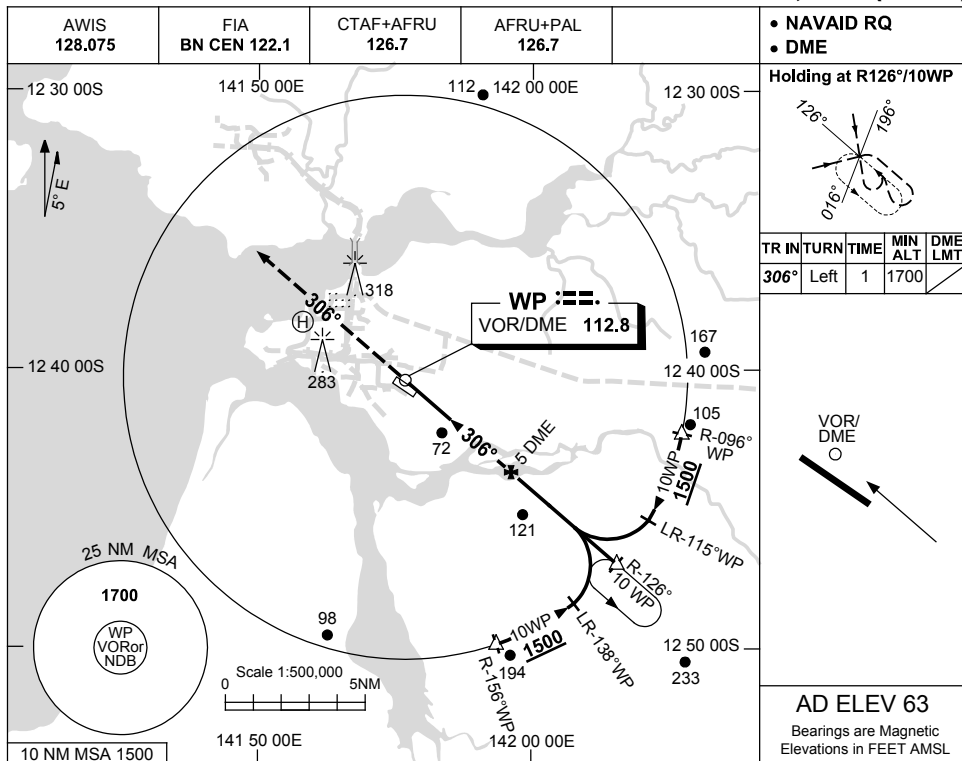
Changes: 283FT SINGLE LIT OBST, 318FT LIT OBST, COORD FORMAT.

BWPV001-166

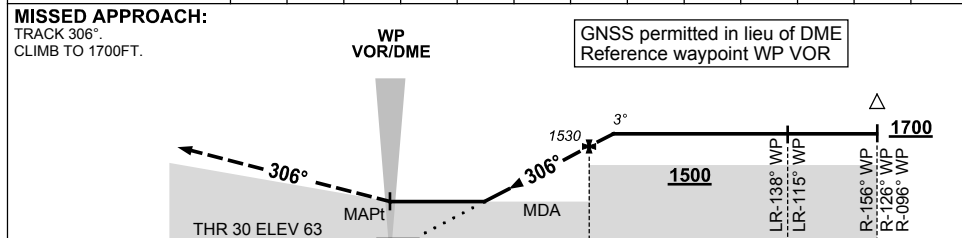
USE QNH

VOR-Z RWY 30
WEIPA, QLD (YBWP)

25 MAR 2021



DIST BY DME	2.1	2.5	3	4	5	5.5						
ALT (3° APCH PATH)	610	740	890	1210	1530	1700						



NOTES

CATEGORY	A	B	C	D
S-I VOR/DME	610 (547-3.0)			
CIRCLING	740 (677-2.4)	830 (767-4.0)	860 (797-5.0)	
ALTERNATE	(1177-4.4)	(1267-6.0)	(1297-7.0)	

1. MAX IAS:
INITIAL : 210KT.

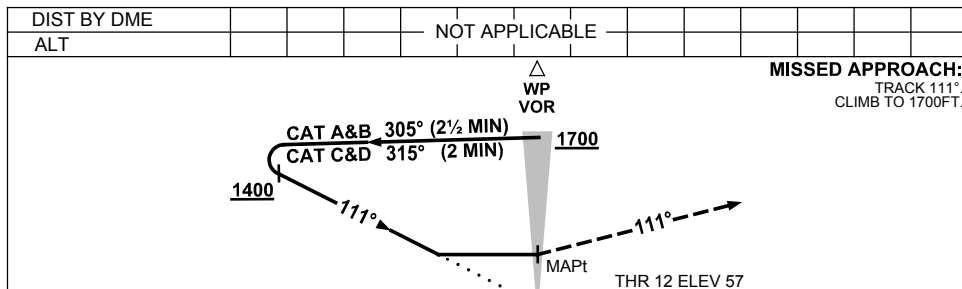
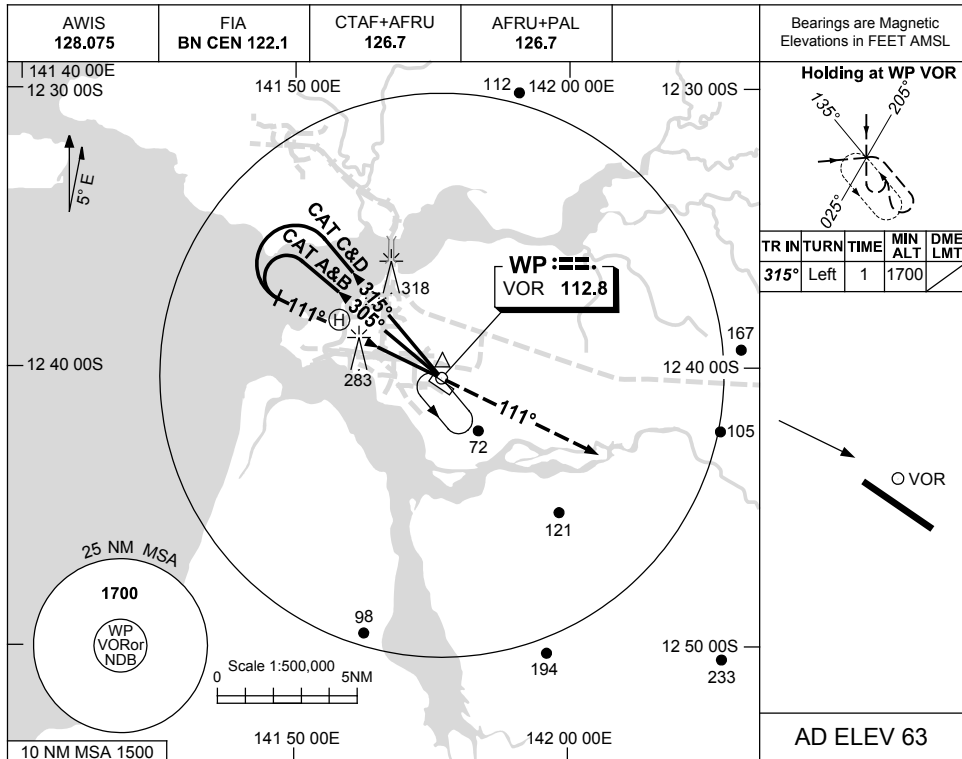
Changes: 283FT SINGLE LIT OBST, 318FT LIT OBST.

BWPV002-166

USE QNH

VOR-Y RWY 12
WEIPA, QLD (YBWP)

25 MAR 2021



NOTES

CATEGORY	A	B	C	D
S-I VOR	660 (597-3.3)			
CIRCLING	740 (677-2.4)	830 (767-4.0)	860 (797-5.0)	
ALTERNATE	(1177-4.4)	(1267-6.0)	(1297-7.0)	

1. MAX IAS:
INITIAL : 210KT.

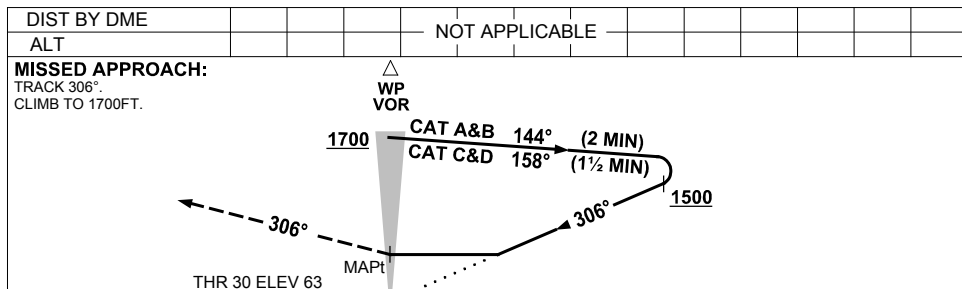
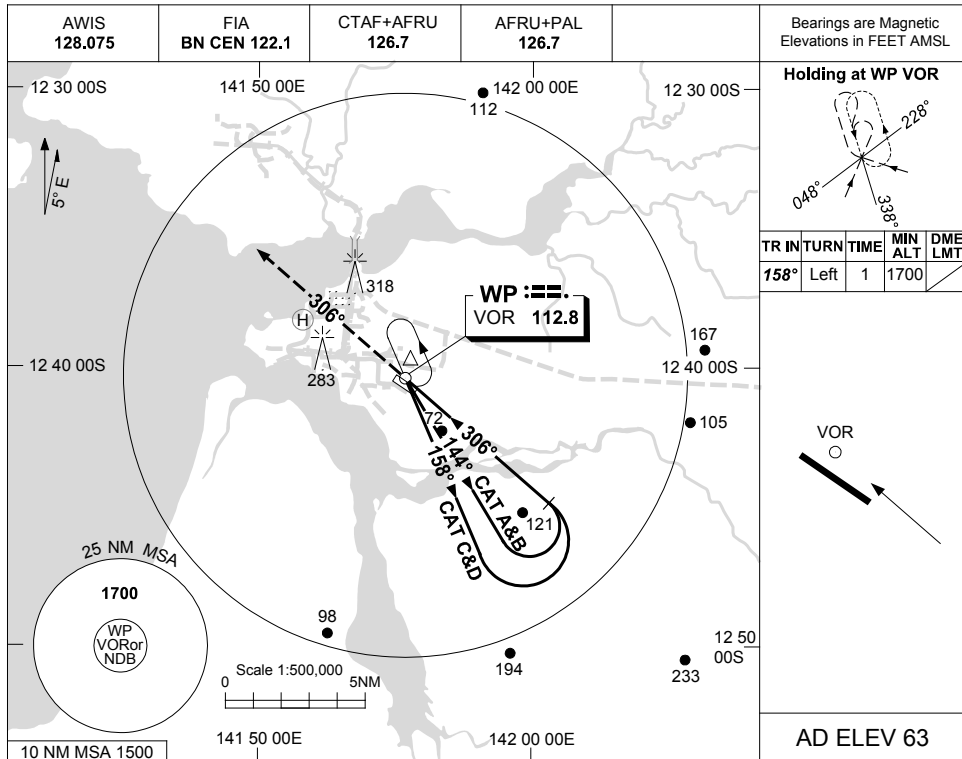
Changes: 283FT SINGLE LIT OBST, 318FT LIT OBST.

BWPV003-166

USE QNH

VOR-Y RWY 30
WEIPA, QLD (YBWP)

25 MAR 2021



NOTES

CATEGORY	A	B	C	D
S-I VOR	740 (677-3.8)			
CIRCLING	740 (677-2.4)	830 (767-4.0)	860 (797-5.0)	
ALTERNATE	(1177-4.4)	(1267-6.0)	(1297-7.0)	

1. MAX IAS:
INITIAL : 210KT.

Changes: 283FT SINGLE LIT OBST, 318FT LIT OBST.

BWPV004-166