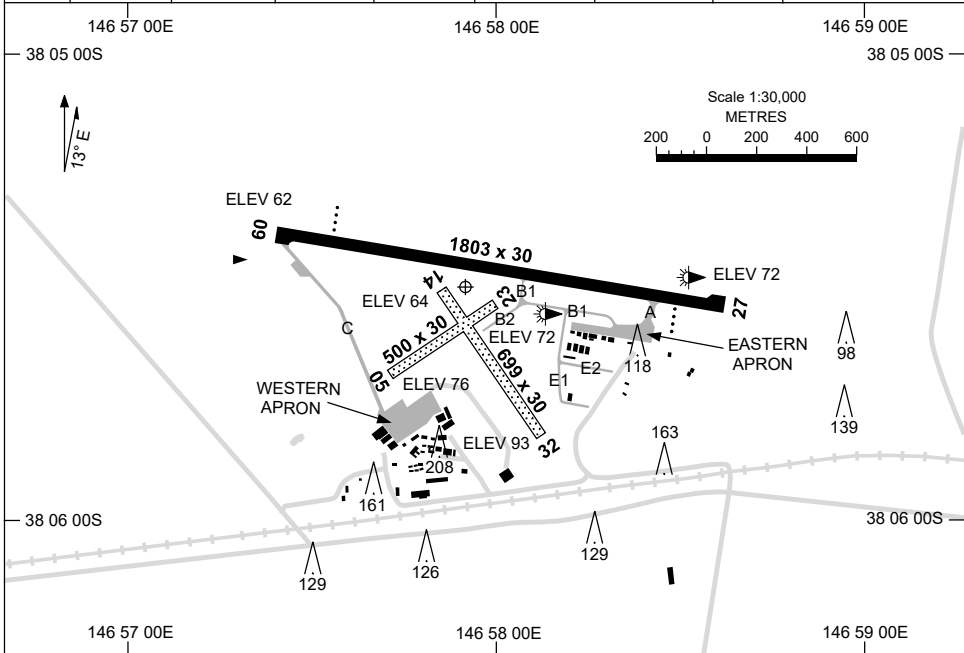


7 SEP 2023

AD ELEV 93
38 05 30S 146 57 55E

AERODROME CHART
WEST SALE, VIC (YWSL)

AFIS* 118.3	ATIS (ESL)* 125.4 350	APP (ESL)* 123.3 340.2	ACD (ESL)* 133.6	ACC (ESL)* 135.8	FIA ML CEN 124.0	CTAF+AFRU* 118.3	PAL+AA 119.6	Bearings are Magnetic Elevations in FEET AMSL
----------------	--------------------------	---------------------------	---------------------	---------------------	---------------------	---------------------	-----------------	--



RWY		AERODROME LIGHTING
		TAXIWAY : BLUE EDGE ON A, B1, C. REFLECTIVE MARKERS ON E1, E2. RL : PAL+AA 119.6, SDBY (15 SEC)
09 ⁰⁸⁷		PAPI 3.0° 39FT LIRL
²⁶⁷ 27		PAPI 3.0° 39FT LIRL
05 ⁰⁴⁴		NIL
²²⁴ 23		NIL
14 ¹³³		NIL
³¹³ 32		NIL

NOTES

* 1. REFER TO ERSa FOR AVAILABILITY.

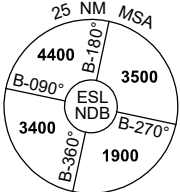
Changes: TWY, APRON, TWY LIGHTING, NOTES, Editorial.

WSLAD01-176

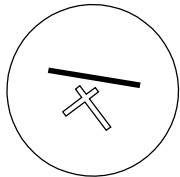
DME or GNSS ARRIVAL PROCEDURES WEST SALE, VIC (YWSL)

28 NOV 2024

AFIS * 118.3	ATIS (ESL) * 125.4 350	APP (ESL) * 123.3 340.2	ACC (ESL) * 135.8	FIA ML CEN 124.0	CTAF+AFRU * 118.3	PAL+AA 119.6	Bearings are Magnetic Elevations in FEET AMSL
-----------------	---------------------------	----------------------------	----------------------	---------------------	----------------------	-----------------	--



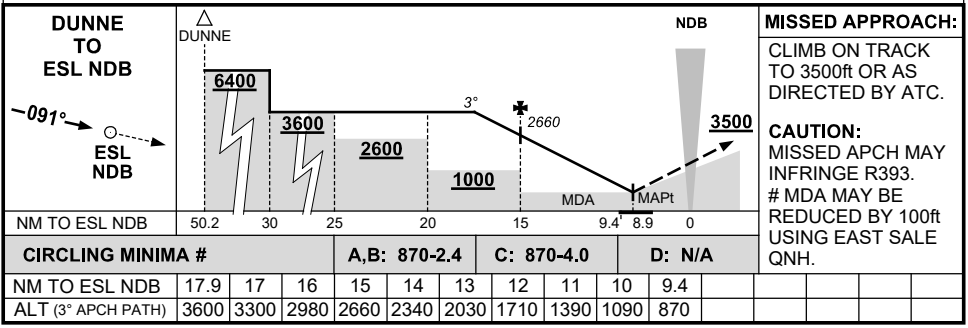
**DME USING ESL DME 108.1 (18X)
REFERENCE WAYPOINT ESL NDB (350)**



10 NM MSA 1900

* REFER TO ERSA FOR AVAILABILITY

AD ELEV 93



Changes: R393 REPLACES R391.

WSLDG01-181

**STANDARD INSTRUMENT DEPARTURES (SID)
WEST SALE TWO DEPARTURE - RWYS 09 & 27
WEST SALE, VIC (YWSL)**

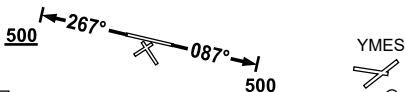
28 NOV 2024

AFIS* 118.3	ATIS (ESL)* 125.4 350	APP (ESL)* 123.3 340.2	ACD (ESL)* 133.6	ACC (ESL)* 135.8	FIA ML CEN 124.0	CTAF+AFRU* 118.3	PAL+AA 119.6	Bearings are Magnetic Elevations in FEET AMSL
----------------	--------------------------	---------------------------	---------------------	---------------------	---------------------	---------------------	-----------------	--

*** REFER TO ERSA FOR AVAILABILITY**

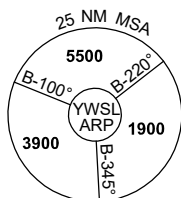
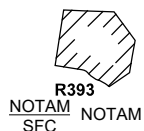


NOT TO SCALE



CAUTION:
1. TREES IN RWY 27
DEP AREA.

**ESL :...
NDB 350**



15 NM MSA 3100

GRAD 3.3%

WEST SALE TWO DEPARTURE

RWY 09

- GRAD 3.3%.
- Track 087°
- At 500ft turn to assigned heading
- Contact EAST SALE APPROACH on 123.3 for radar vectors

RWY 27

- GRAD 3.3%.
- Track 267°
- At 500ft turn to assigned heading
- Contact EAST SALE APPROACH on 123.3 for radar vectors

COMMUNICATION FAILURE PROCEDURE

On recognition of communication failure

- Squawk 7600
- Maintain last assigned vector for two minutes and, if necessary, climb to minimum safe altitude to maintain terrain clearance, then
- Proceed in accordance with the latest ATC route clearance acknowledge

Changes: R391A-B DELETED, R393 ADDED, Editorial.

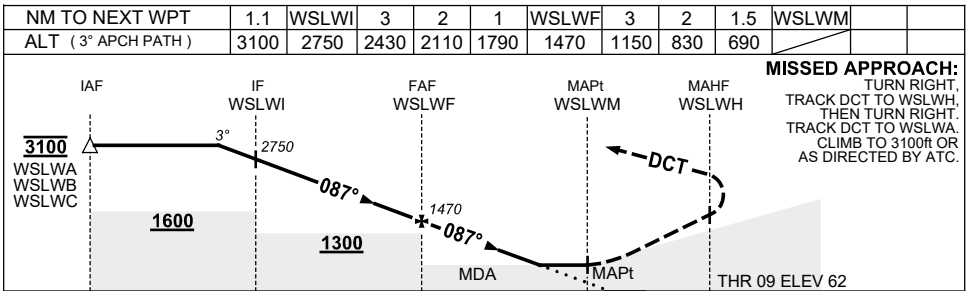
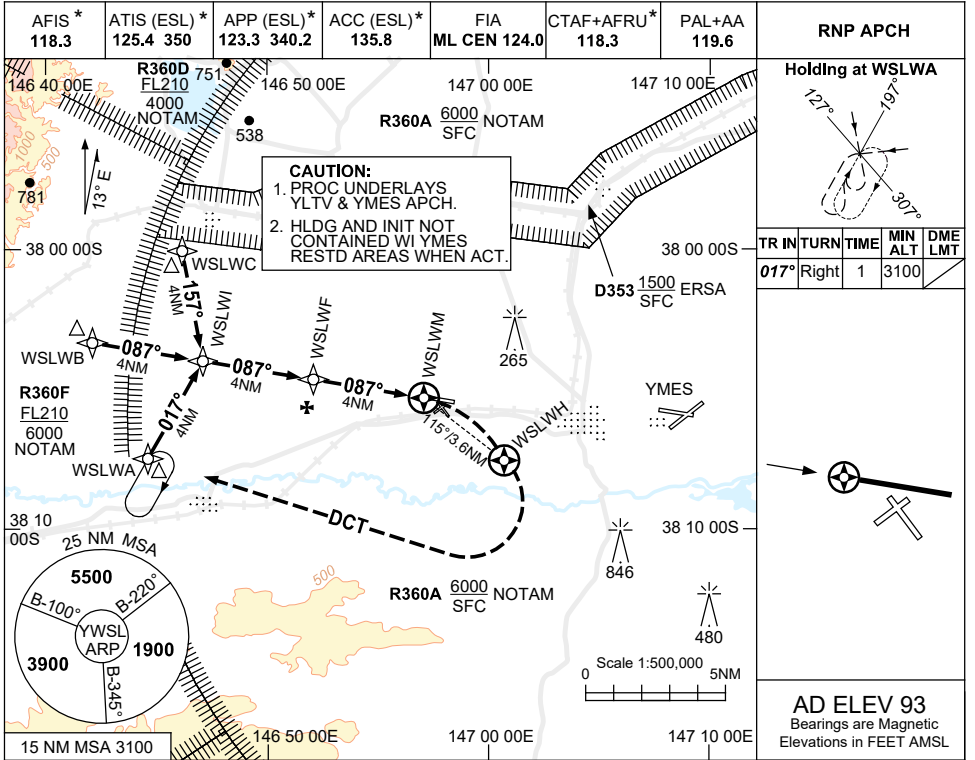
WSLDP01-181

USE QNH

RNP RWY 09

28 NOV 2024

WEST SALE, VIC (YWSL)



CATEGORY	A	B	C	D
LNAV ‡	640 (578-3.3)			NOT APPLICABLE
CIRCLING ‡	870 (777-2.4)		870 (777-4.0)	
ALTERNATE	(1277-4.4)		(1277-6.0)	

NOTES

1. MAX IAS:
HOLDING : 210KT.
INITIAL : 200KT.
2. AWY CLR RQ DRG YMES ATS HR.
- *3. REFER TO ERSA FOR AVAILABILITY.
- ‡4. MDA MAY BE REDUCED BY 100ft USING YMES QNH.
5. COLOUR : SEE SPEC NOTICES.

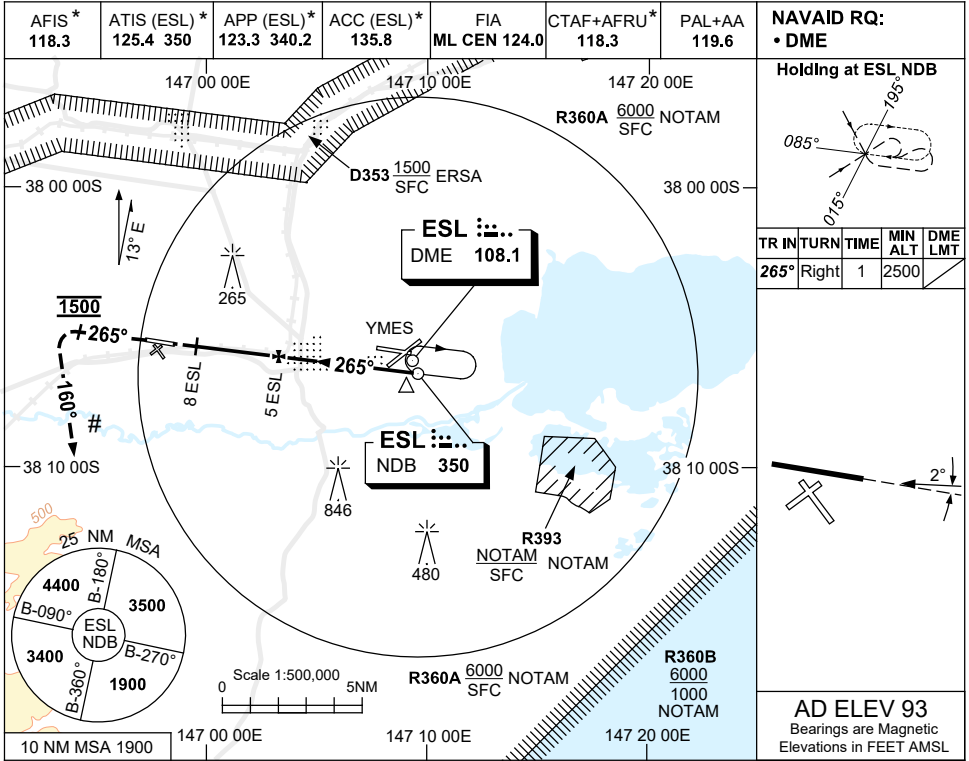
Changes: Editorial.

WSLGN01-181

USE QNH

NDB-Y RWY 27
WEST SALE, VIC (YWSL)

28 NOV 2024



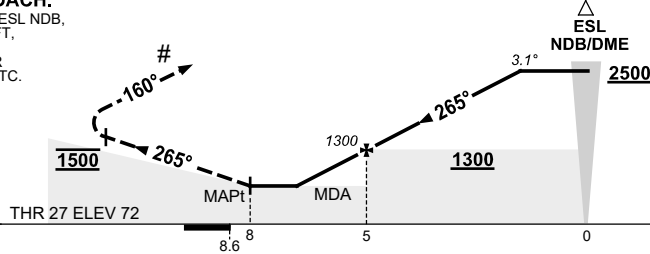
TR	IN	TURN	TIME	MIN	DME
				ALT	LMT
265°	Right		1	2500	

AD ELEV 93
Bearings are Magnetic
Elevations in FEET AMSL

NM	FM	ESL	DME	MAPt	6.9	6	5	4	3	2	1.4				
ALT (3.1° APCH PATH)															
					690	970	1300	1630	1960	2290	2500				

MISSED APPROACH:

TRACK 265° FROM ESL NDB,
AT 1500ft TURN LEFT,
TRACK 160°.
CLIMB TO 3500ft OR
AS DIRECTED BY ATC.



NM	FM	ESL	DME	MAPt	8.6	5	0
----	----	-----	-----	------	-----	---	---

NOTES

- MAX IAS : HOLDING : 210KT.
- REFER TO ERSA FOR AVAILABILITY.
- MDA MAY BE REDUCED BY 100ft USING YMES QNH.
- YYRM RNP RWY 27 PROC IS 20NM TO THE SOUTH.
- COLOUR : SEE SPEC NOTICES.

CATEGORY	A	B	C	D
				NOT APPLICABLE
CIRCLING‡	870 (777-2.4)		870 (777-4.0)	
ALTERNATE	(1277-4.4)		(1277-6.0)	

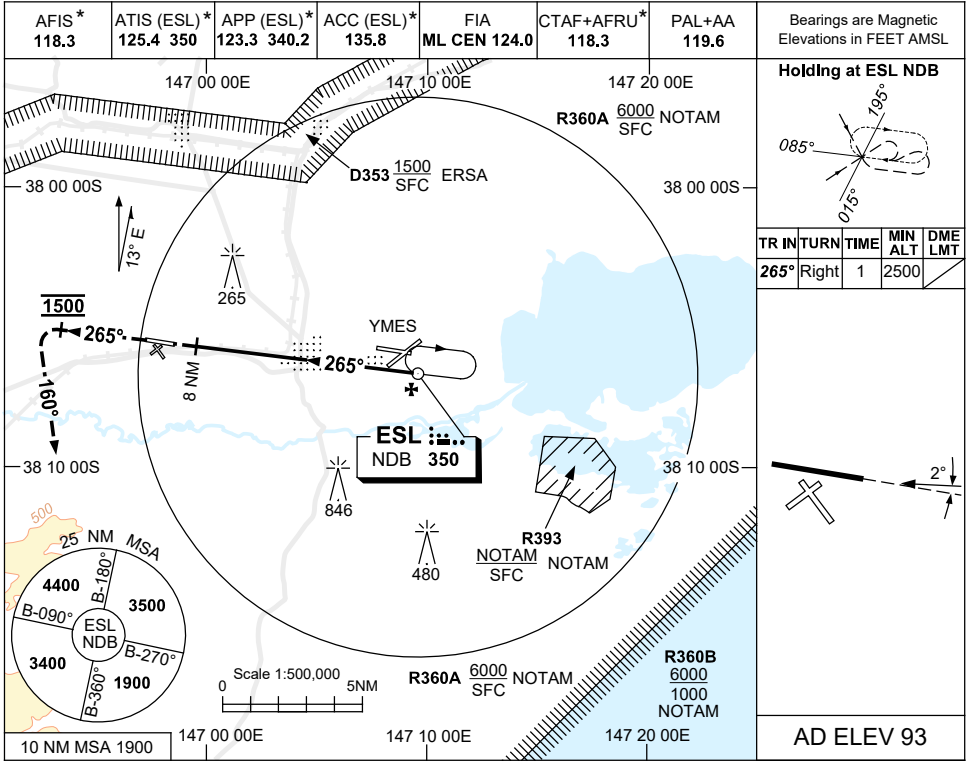
Changes: R391A-B DELETED, R393 ADDED, Editorial.

WSLNB01-181

USE QNH

NDB-Z RWY 27
WEST SALE, VIC (YWSL)

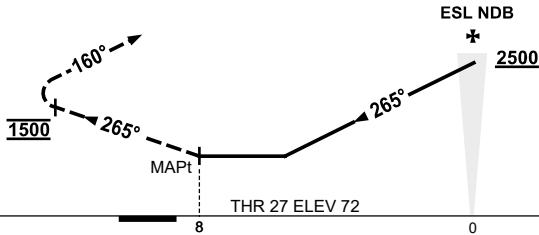
28 NOV 2024



NDB to MAPt	GS (KNOTS)	40	60	80	100	120	140	160					
	TIME (MIN:SEC)	12:00	8:00	6:00	4:48	4:00	3:26	3:00					

MISSED APPROACH:

TRACK 265° FROM ESL NDB,
 AT 1500ft TURN LEFT,
 TRACK 160°
 CLIMB TO 3500ft OR
 AS DIRECTED BY ATC.



NM FM ESL NDB

NOTES

CATEGORY	A	B	C	D	*1. REFER TO ERSA FOR AVAILABILITY. ‡2. MDA MAY BE REDUCED BY 100ft USING YMES QNH. 3. COLOUR : SEE SPEC NOTICES.
			NOT APPLICABLE		
CIRCLING ‡	870 (777-2.4)				
ALTERNATE	(1277-4.4)				

Changes: R391A-B DELETED, R393 ADDED, Editorial.

WSLNB02-181