

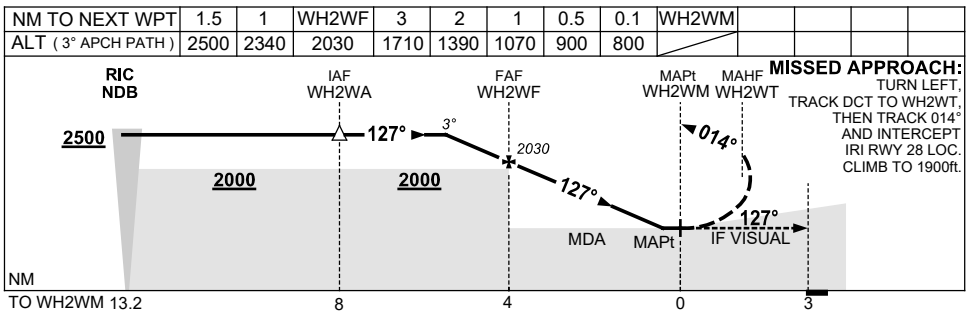
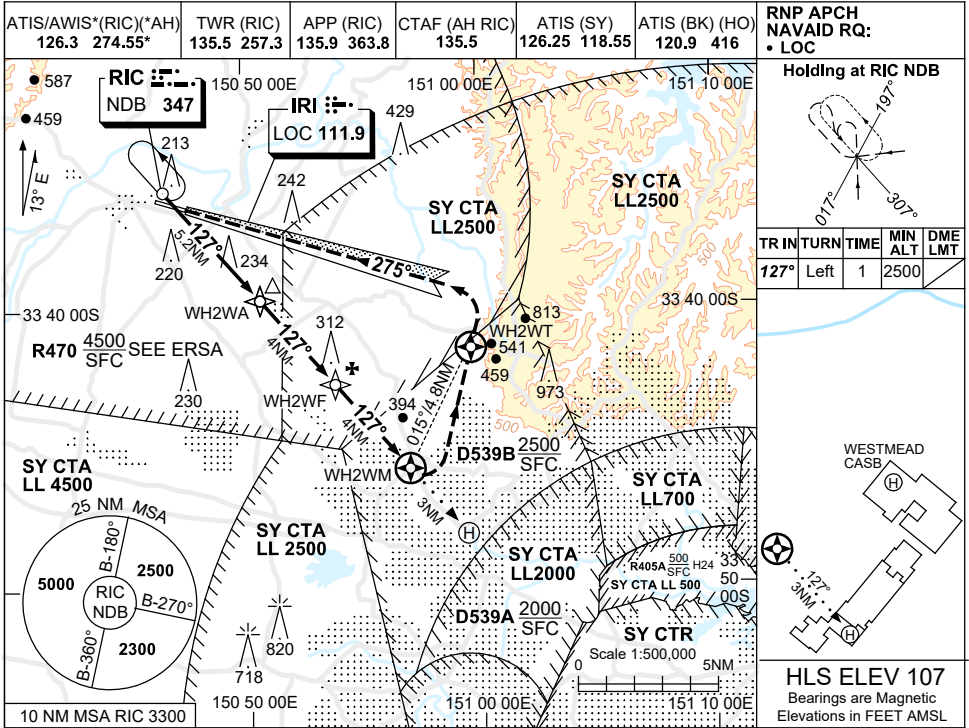
FOR CASA APPROVED OPERATORS ONLY

USE QNH

RNP 127

13 JUN 2024

WESTMEAD HOSPITAL, NSW (YWST)



MISSED APPROACH:
TURN LEFT,
TRACK DCT TO WH2WT,
THEN TRACK 014°
AND INTERCEPT
IRI RWY 28 LOC.
CLIMB TO 1900ft.

NOTES

1. COLOUR: SEE SPEC NOTICES.

CATEGORY	H
LNAV (NON VAA) USING AREA QNH	900 (793-4.6)
LNAV (NON VAA) USING SY, RIC OR BK QNH	800 (693-4.0)
ALTERNATE	NOT APPLICABLE

Changes: WAYPOINT NAMING CONVENTION, Editorial.

WSTGN01-179

FOR CASA APPROVED OPERATORS ONLY

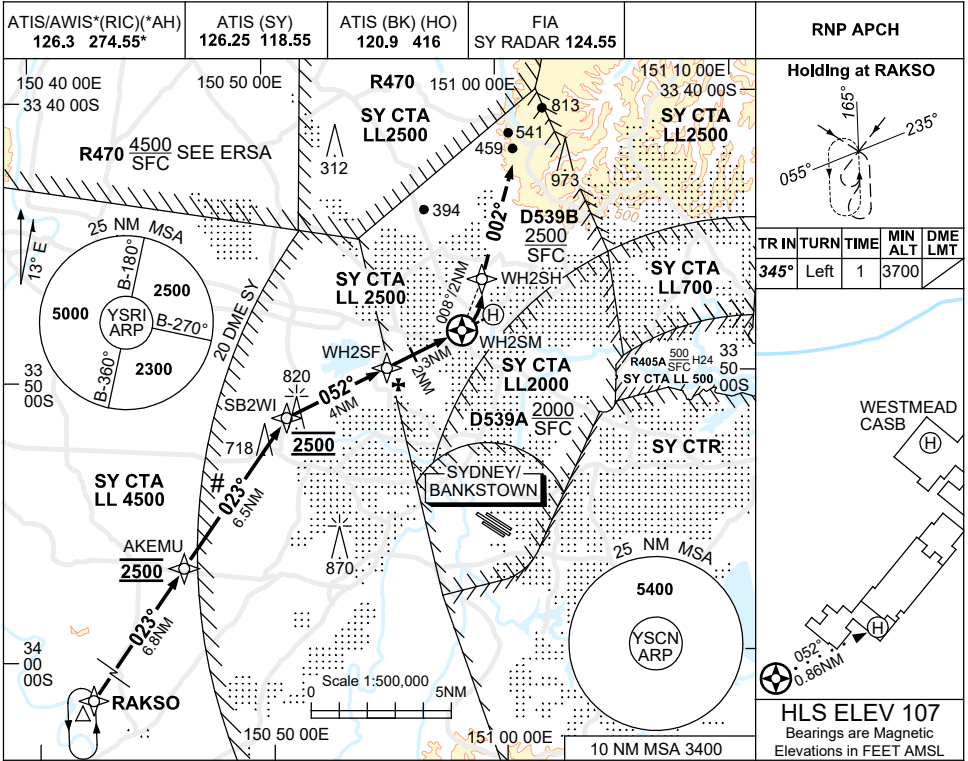
FOR CASA APPROVED OPERATORS ONLY

USE QNH

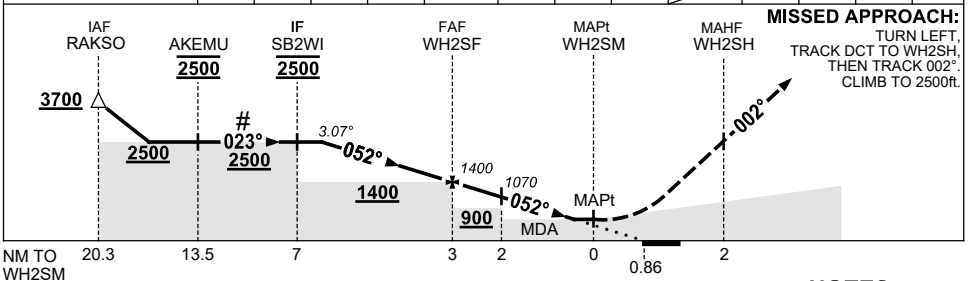
RNP 052

28 NOV 2024

WESTMEAD HOSPITAL, NSW (YWST)



NM TO NEXT WPT	3.4	3	2	1	WH2SF	2	1.2	0.9	WH2SM				
ALT (3.07° APCH PATH)	2500	2380	2050	1730	1400	1070	800	700					



NOTES

- #1. INITIAL SEGMENT CO-INCIDENT WITH INITIAL SEGMENT FOR YSBK RNP RWY 11C PROC.
- #2. COLOUR: SEE SPEC NOTICES.
- #3. APCH CLR RQ FM SY ATS. ALL ACFT TRACK VIA RAKSO UNLESS ADVISED BY ATC.

CATEGORY	H
LNAV (VAA) USING AREA QNH	800 (693-3.9)
LNAV (VAA) USING SY, RIC OR BK QNH	700 (593-3.4)
ALTERNATE	NOT APPLICABLE

Changes: WPT AKEMU ADDED, ALT RQMNTS.

WSTGN02-181

FOR CASA APPROVED OPERATORS ONLY