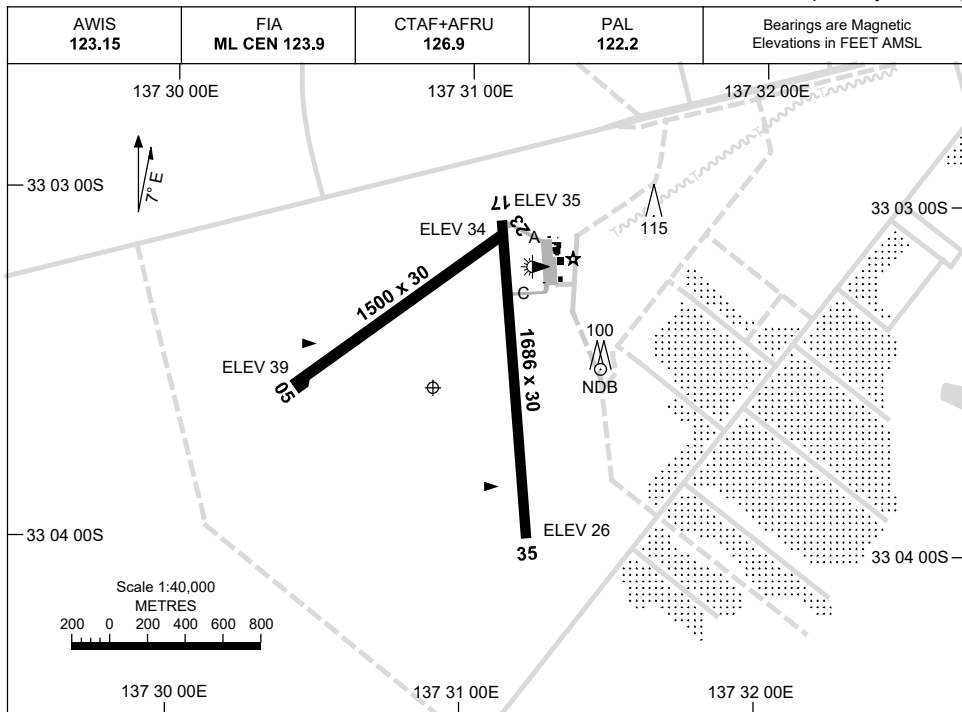


23 MAR 2023

AD ELEV 41
33 03 32S 137 30 52E

AERODROME CHART
WHYALLA, SA (YWHA)



	AERODROME LIGHTING
RWY	ABN : ALT WG 8 SEC TAXIWAY : BLUE EDGE TWY A AND C RL : PAL 122.2 , SDBY (15 SEC)
17 ¹⁶⁷	LIRL
³⁴⁷ 35	LIRL
05 ⁰⁴⁷	NIL
²²⁷ 23	NIL

NOTES

1. FIA FREQ 123.9 AVBL CIRCUIT AREA.

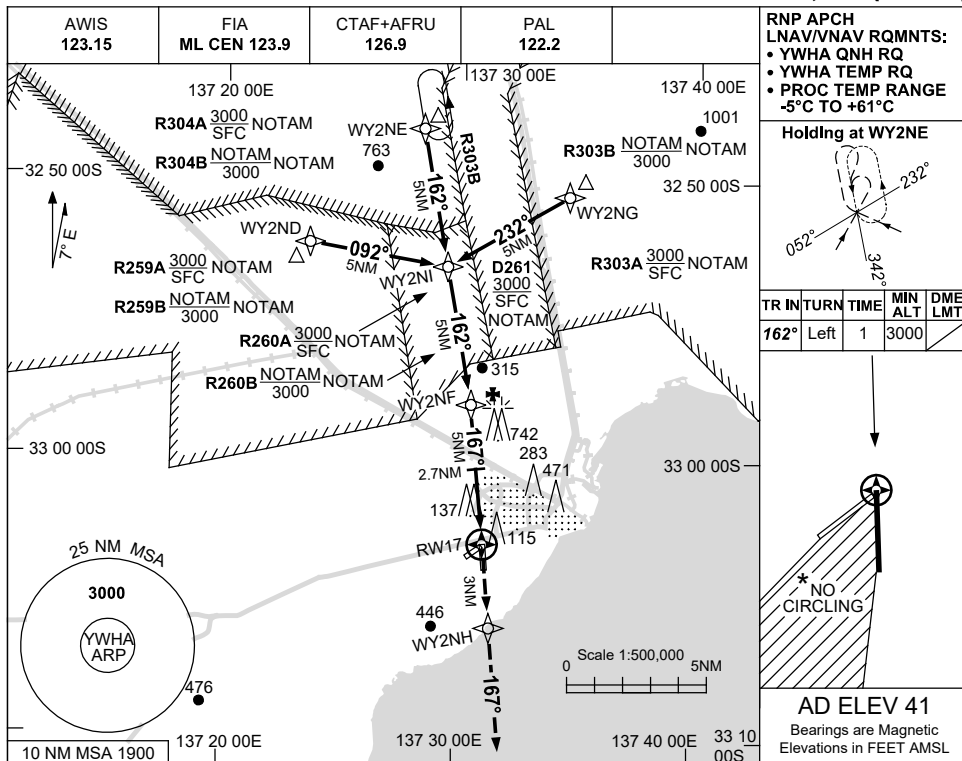
Changes: RWY 05/23 SEALED, TORA, THR ELEV, TURNING NODE, TWY B DCMSD, BLUE EDGE, BUILDINGS, APRON, RWY 17/35 WID.

WHAAD01-174

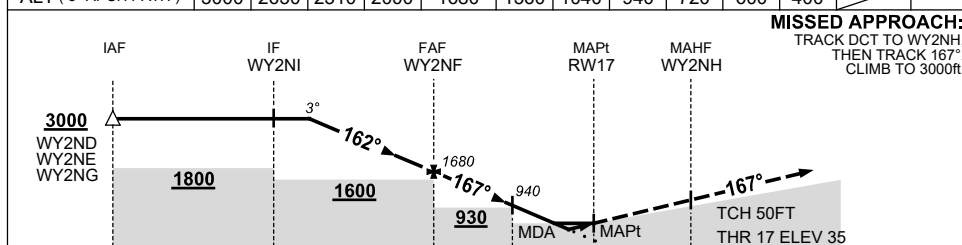
USE QNH

RNP RWY 17
WHYALLA, SA (YWHA)

28 NOV 2024



NM TO NEXT WPT	4.2	3	2	1	WY2NF	4	3	2.7	2	1.6	1	RW17
ALT (3° APCH PATH)	3000	2630	2310	2000	1680	1360	1040	940	720	600	400	



MISSED APPROACH:
TRACK DCT TO WY2NH,
THEN TRACK 167°.
CLIMB TO 3000ft.

NM TO RW17: 15, 10, 5, 2.7, 0, 3

NOTES

- MAX IAS:
HOLDING : 210KT.
INITIAL : 210KT.
- NO CIRCLING IN SECTOR WEST OF RWY 17 / 35 AND SOUTH OF RWY 05 / 23.
- CLR RQ WHEN RESTRICTED AREAS ACT.

CATEGORY	A	B	C	D
LNAV/VNAV		400 (365-2.0)		NOT APPLICABLE
LNAV		600 (559-3.2)		
CIRCLING *	710 (669-2.4)		1240 (1199-4.0)	
ALTERNATE	(1169-4.4)		(1699-6.0)	

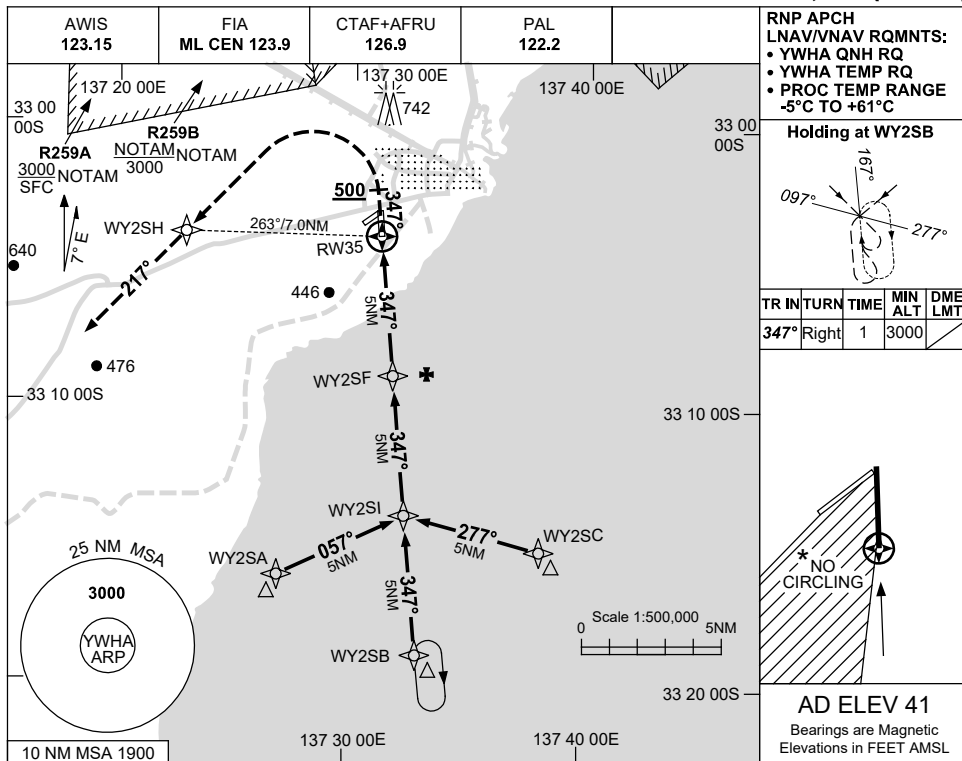
Changes: WPT NAMING CONVENTION, Editorial.

WHAGN01-181

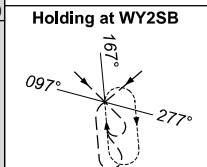
USE QNH

RNP RWY 35
WHYALLA, SA (YWHA)

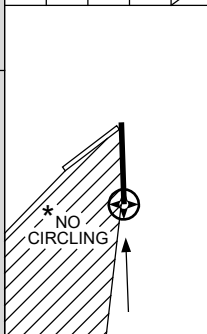
28 NOV 2024



RNP APCH
LNAV/VNAV RQMNTS:
• YWHA QNH RQ
• YWHA TEMP RQ
• PROC TEMP RANGE
-5°C TO +61°C

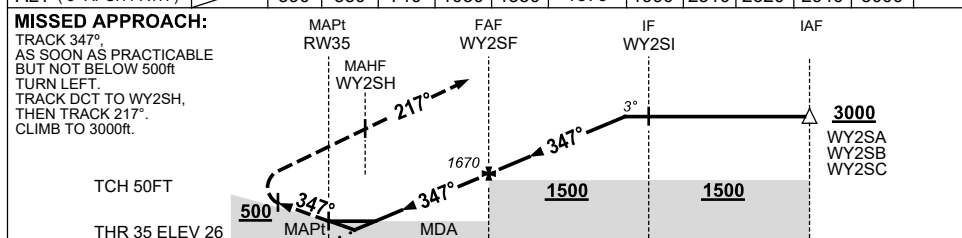


TR IN	TURN	TIME	MIN ALT	DME LMT
347°	Right	1	3000	



AD ELEV 41
Bearings are Magnetic
Elevations in FEET AMSL

NM TO NEXT WPT	RW35	1	1.5	2	3	4	WY2SF	1	2	3	4	4.2	
ALT (3° APCH PATH)		390	550	710	1030	1350	1670	1990	2310	2620	2940	3000	



NM TO RW35: 0, 5, 10, 15

NOTES

CATEGORY	A	B	C	D
LNAV/VNAV	390 (364-2.0)			NOT APPLICABLE
LNAV	550 (524-3.0)			
CIRCLING *	710 (669-2.4)		1240 (1199-4.0)	
ALTERNATE	(1169-4.4)		(1699-6.0)	

*2. NO CIRCLING IN SECTOR WEST OF RWY 17 / 35 AND SOUTH OF RWY 05 / 23.

Changes: MISSED APCH SPEED, WPT NAMING CONVENTION, Editorial.

WHAGN02-181

