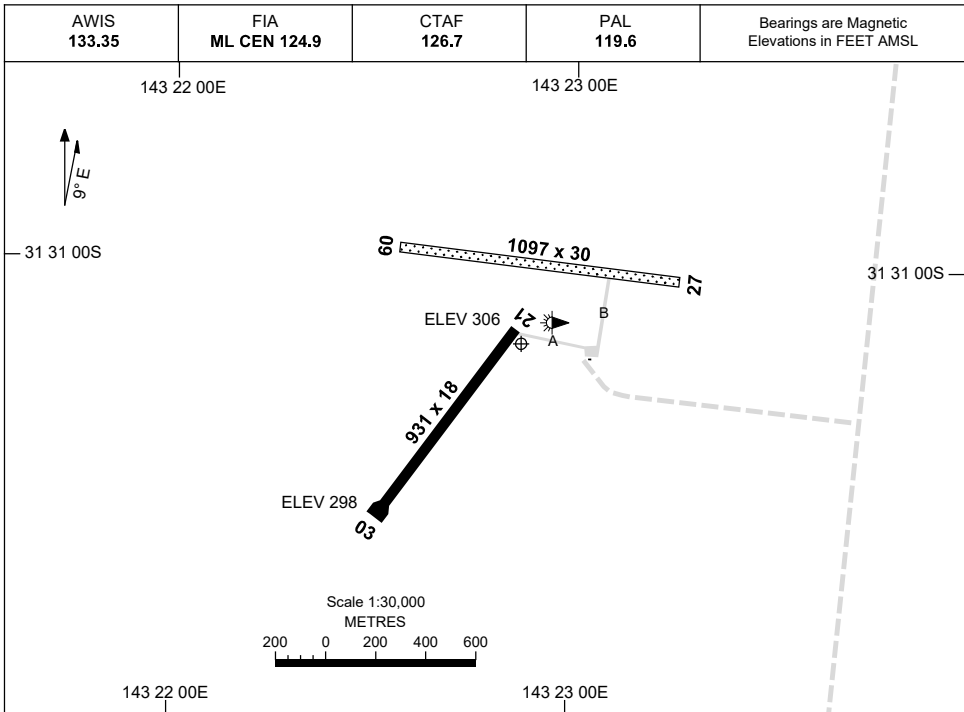


2 DEC 2021

AD ELEV 313  
31 31 10S 143 22 52E

AERODROME CHART  
**WILCANNIA, NSW (YWCA)**



	<b>AERODROME LIGHTING</b>
<b>RWY</b>	TAXIWAY : BLUE EDGE RL : PAL , SDBY (MAN ACT, 15 MIN PN) FOR MEDICAL FLIGHTS ONLY.
<b>03</b> <small>027</small>	LIRL
<small>207</small> <b>21</b>	LIRL

**NOTES**

1. AWIS (PHONE) 02 9353 6459
2. ML CEN FIA 124.9 AVBL IN CIRCUIT AREA.

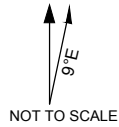
Changes: SDBY PWR, NOTE 2.

WCAAD01-169

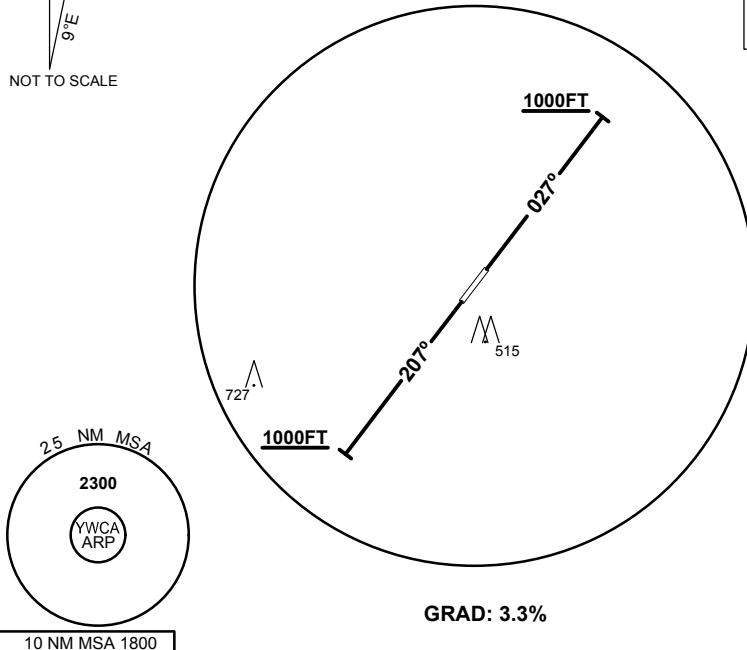
**STANDARD INSTRUMENT DEPARTURE**  
**WILCANNIA ONE DEPARTURE**  
**WILCANNIA, NSW (YWCA)**

13 AUG 2020

AWIS 133.35	FIA ML CEN 124.9	CTAF 126.7	PAL 119.6	BRG are MAG ELEV in FEET AMSL
----------------	---------------------	---------------	--------------	----------------------------------



**SPEED**  
**MAX IAS 250KT**  
**BELOW 10,000FT**



**WILCANNIA ONE DEPARTURE**

**RWY 03**

- Track 027°
- At or above 1000FT turn as required
- Continue climb to 2300FT
- Intercept flight plan route

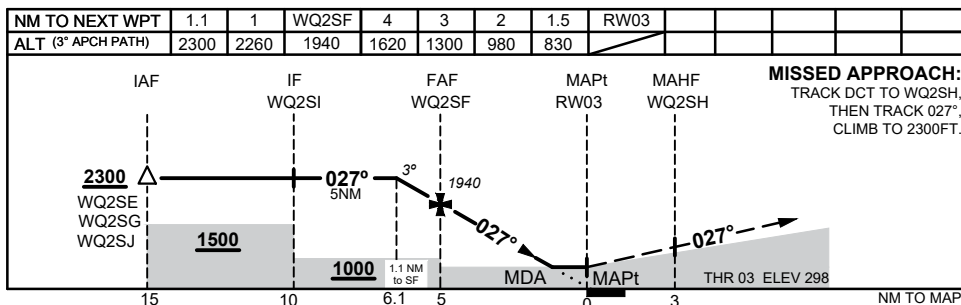
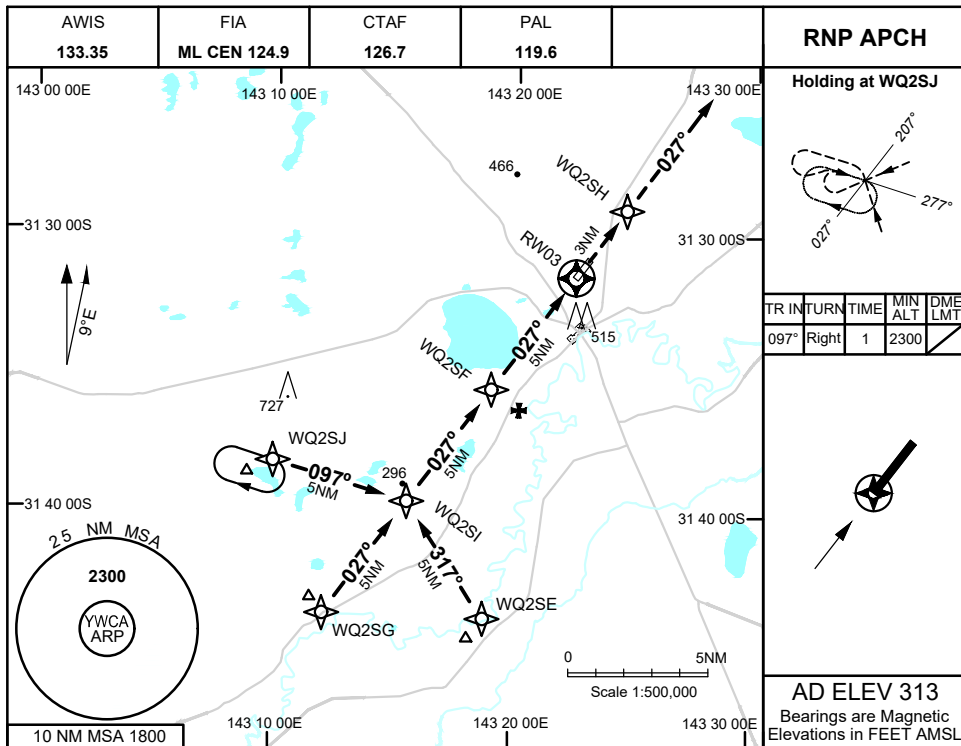
**RWY 21**

- Track 207°
- At or above 1000FT turn as required
- Continue climb to 2300FT
- Intercept flight plan route

**NOTES**

- NIL -

1 DEC 2022



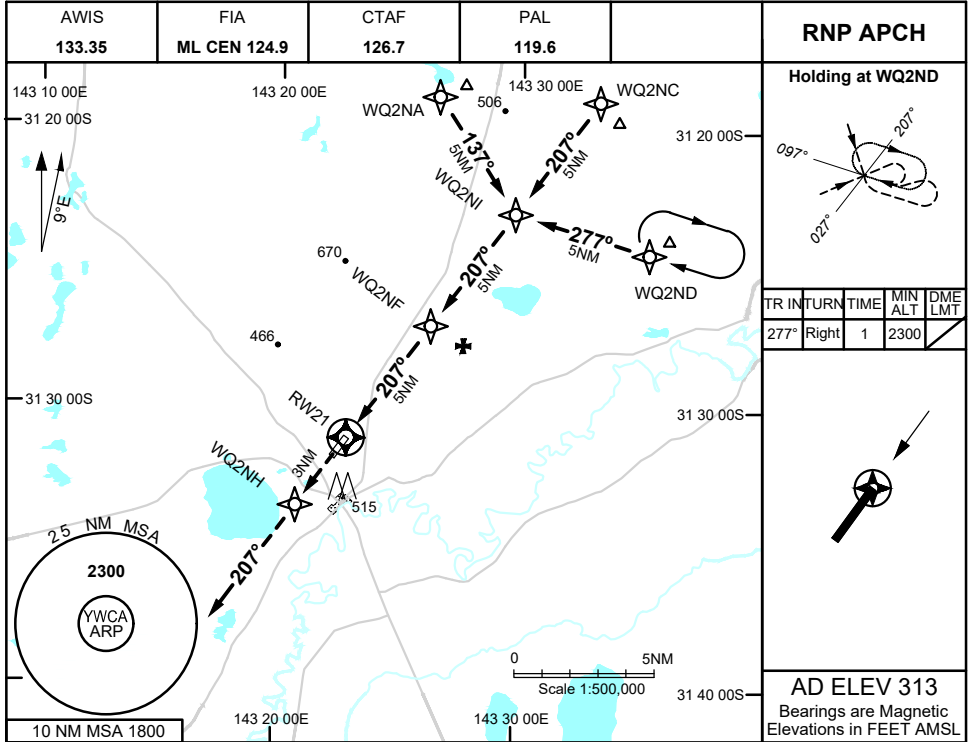
CATEGORY	A	B	C	D
LNAV	<b>830 (532 - 3.0)</b>			NOT APPLICABLE
CIRCLING	<b>920 (607 - 2.4)</b>		<b>1100 (787 - 4.0)</b>	
ALTERNATE	(1107 - 4.4)		(1287 - 6.0)	

**NOTES**  
 1. MAX IAS:  
 INITIAL : 210KTS

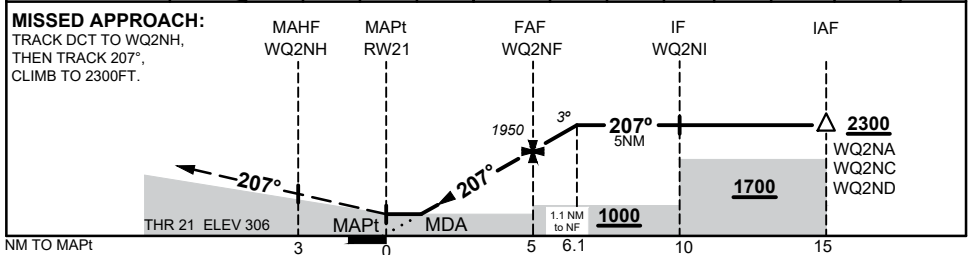
Changes: CHART TITLE, WPT IDENTS, Editorial

WCAGN01-173

1 DEC 2022



NM TO NEXT WPT	RW21	1.5	2	3	4	WQ2NF	1	1.1				
ALT (3° APCH PATH)		830	990	1310	1630	1950	2270	2300				



CATEGORY	A	B	C	D
LNAV	<b>830</b> (524 - 3.0)			NOT APPLICABLE
CIRCLING	<b>920</b> (607 - 2.4)		<b>1100</b> (787 - 4.0)	
ALTERNATE	(1107 - 4.4)		(1287 - 6.0)	

**NOTES**  
1. MAX IAS:  
INITIAL : 210KTS

Changes: CHART TITLE, WPT IDENTs, Editorial

WCAGN02-173