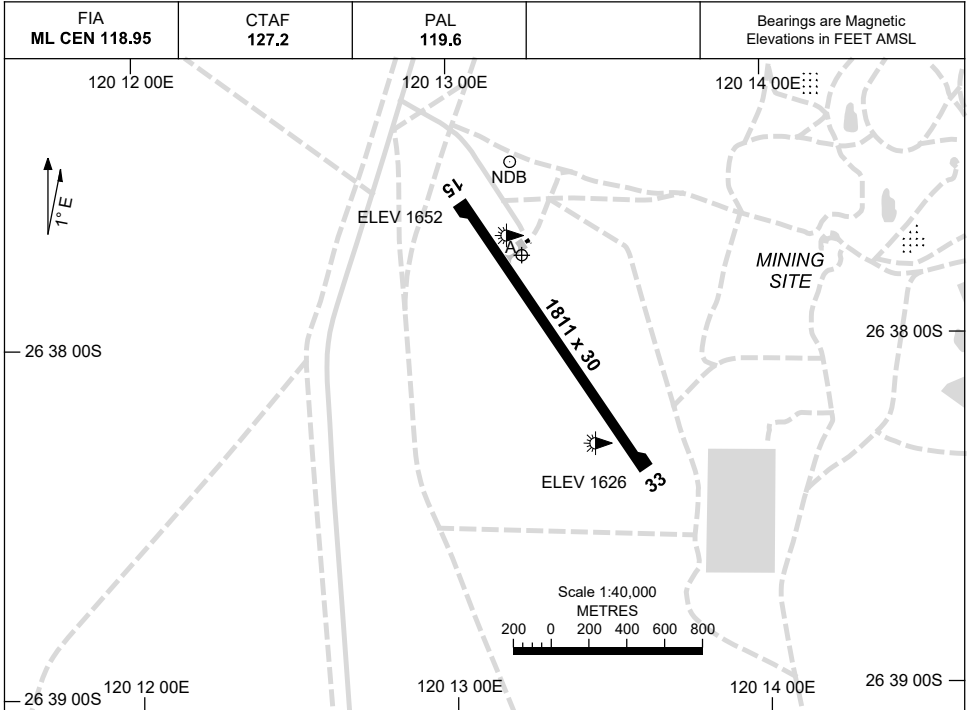


13 JUN 2024

AD ELEV 1652
26 37 45S 120 13 14E

AERODROME CHART
WILUNA, WA (YWLU)



	AERODROME LIGHTING
RWY	TAXIWAY : BLUE EDGE RL : PAL 119.6 , SDBY (MANUAL ACT , 1 HR PN).
15 ¹⁴⁶ ₃₂₆ 33	LIRL LIRL

NOTES

1. FIA FREQ 118.95 AVBL IN CIRCUIT.
2. AWIS (PHONE) 08 6216 2641

Changes: NOTE 2 REMOVED, Editorial.

WLUA01-179

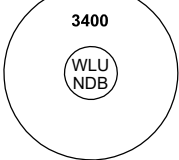
GNSS ARRIVAL PROCEDURES WILUNA, WA (YWLU)

21 MAR 2024

FIA ML CEN 118.95	CTAF 127.2	PAL 119.6	
-----------------------------	----------------------	---------------------	--

Bearings are Magnetic
Elevations in FEET AMSL

25 NM MSA


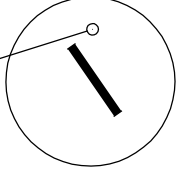


3400

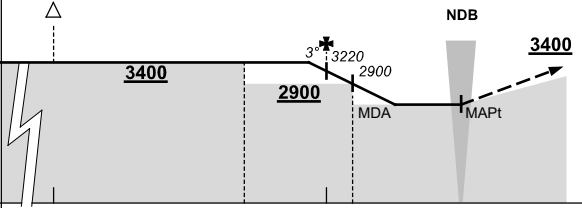
WLU
NDB

10 NM MSA 3300

REFERENCE WAYPOINT WLU NDB
AWIS (PHONE) 08 6216 2641

AD ELEV 1652

ALL ROUTES TO WLU NDB											<p>MISSED APPROACH: CLIMB ON TRACK TO 3400FT.</p>							
	NM TO WLU NDB	25	15	8	5	4	0											
CIRCLING MINIMA			A,B: 2400-2.4		C: 2450-4.0		D: N/A											
NM TO WLU NDB	5.6	5	4	3	2.6	2.4												
ALT (3° APCH PATH)	3400	3220	2900	2580	2450	2400												

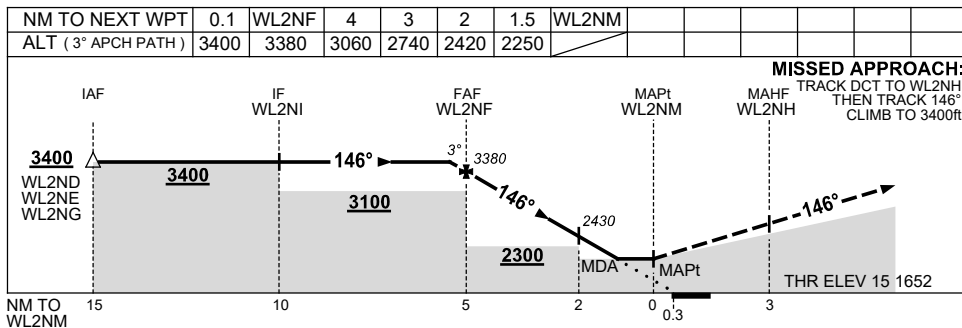
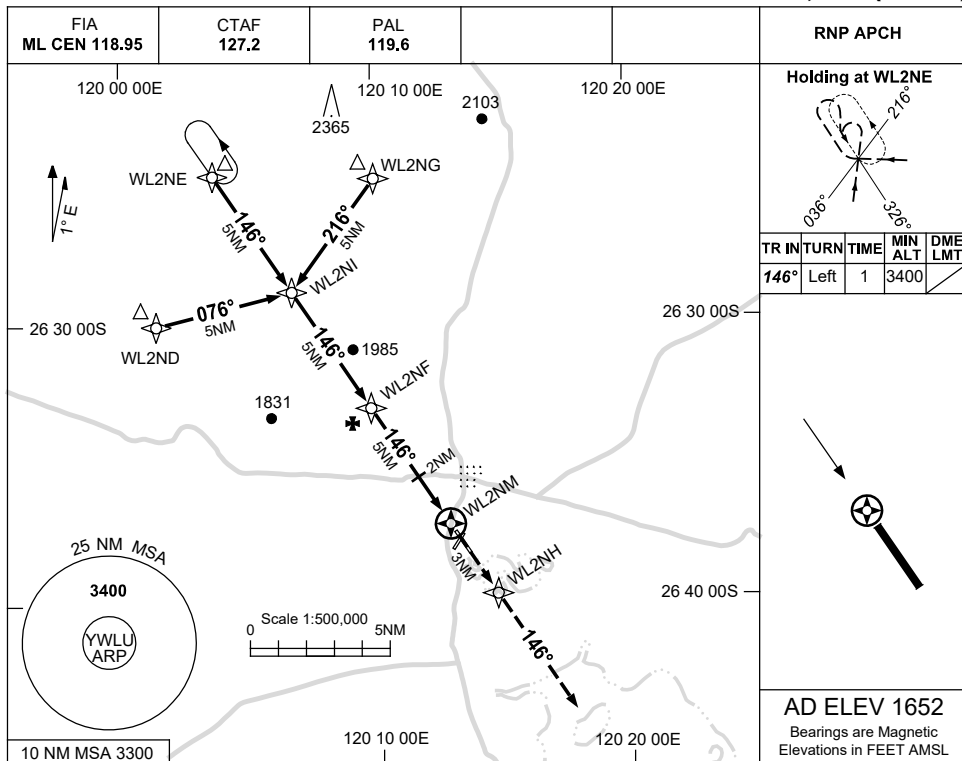
Changes: AD ELEV.

WLUDG01-178

USE QNH

RNP RWY 15
WILUNA, WA (YWLU)

21 MAR 2024



NOTES

CATEGORY	A	B	C	D
LNAV	2250 (598-3.4)			NOT APPLICABLE
CIRCLING	2290 (638-2.4)	2450 (798-4.0)		
ALTERNATE	(1138-4.4)		(1298-6.0)	

- MAX IAS:
INITIAL : 210KT.
HOLDING : 190KT.
- AWIS (PHONE):
08 6216 2641

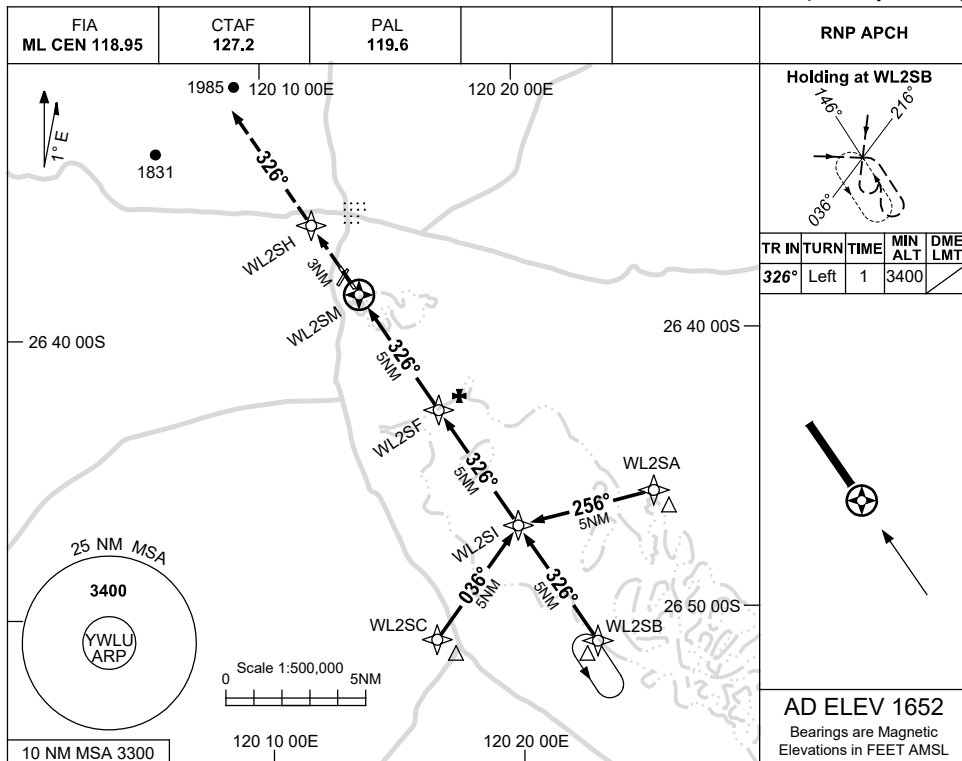
Changes: AD ELEV, THR ELEV, WPT NAMING CONVENTION, Editorial.

WLUGN01-178

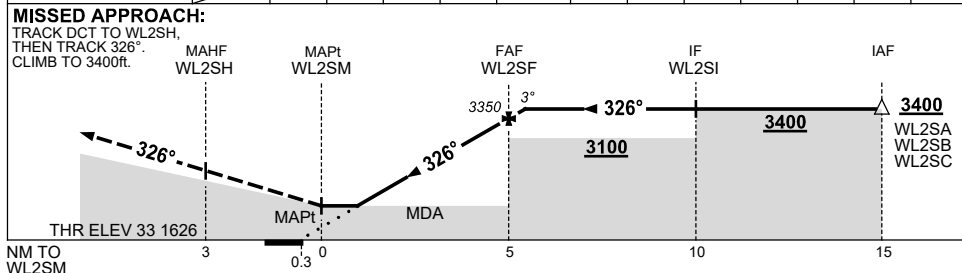
USE QNH

RNP RWY 33
WILUNA, WA (YWLU)

21 MAR 2024



NM TO NEXT WPT	WL2SM	1.5	2	3	4	WL2SF	0.1				
ALT (3° APCH PATH)		2250	2400	2720	3040	3350	3400				



NOTES

CATEGORY	A	B	C	D
LNAV	2250 (624-3.5)			NOT APPLICABLE
CIRCLING	2290 (638-2.4)		2450 (798-4.0)	
ALTERNATE	(1138-4.4)		(1298-6.0)	

1. MAX IAS: INITIAL : 210KT.
2. AWIS (PHONE): 08 6216 2641

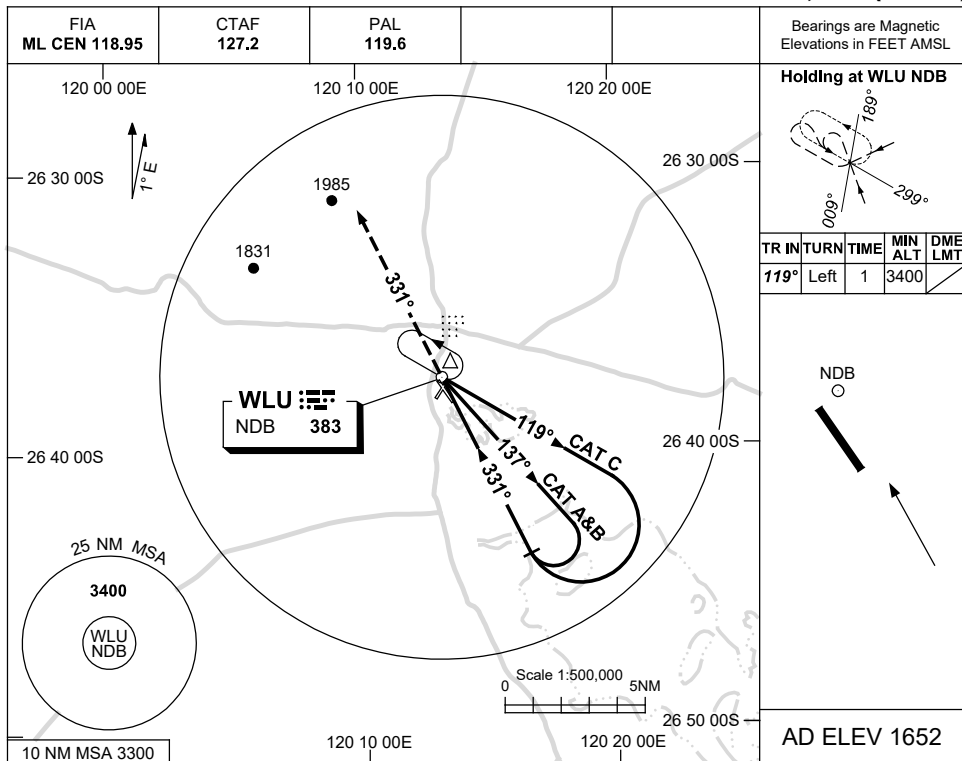
Changes: AD ELEV, THR ELEV, WPT NAMING CONVENTION, Editorial.

WLUGN02-178

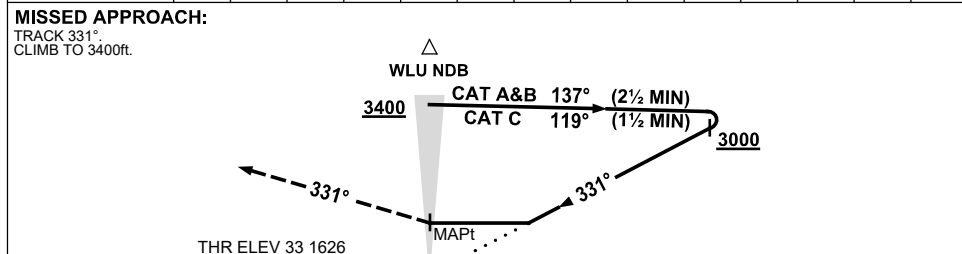
USE QNH

NDB RWY 33
WILUNA, WA (YWLU)

21 MAR 2024



DME DIST	NOT APPLICABLE							
ALT								



NM TO WLU NDB

NOTES

CATEGORY	A	B	C	D
S-I NDB	2250 (624-3.5)			NOT APPLICABLE
CIRCLING	2290 (638-2.4)	2450 (798-4.0)		
ALTERNATE	(1138-4.4)	(1298-6.0)		

1. MAX IAS:
INITIAL :
CAT C : 210KT.
2. AWIS (PHONE):
08 6216 2641

Changes: AD ELEV, THR ELEV, INBD TR, NOTE 1.

WLUNB01-178